

# 7<sup>west</sup>18

FLATIRON DISTRICT | NEW YORK

ENTIRE 3<sup>RD</sup> FLOOR – 5,377 SF

## NEIGHBORHOOD DESCRIPTION

VIBRANT NEIGHBORHOOD, CENTRALLY LOCATED  
BETWEEN FLATIRON & UNION SQUARE

INCREDIBLE FOOD & ENTERTAINMENT

OPTIONS NEARBY: LEVAIN BAKERY KYMA,  
RAINES LAW, LITTLE MAVEN, OOTOYA,  
TARALLUCCI E VINO, ROSA MEXICANO, THAI  
VILLA, BOQUERIA, DOUGH DONUTS,

AMAZING SHOPPING: LULULEMON, BANANA  
REPUBLIC, J. CREW, ARITZIA, ZARA, H&M,

EQUINOX, BODYROK, THE ZONE, PEDAL HOUSE,  
SLT, COREPOWER YOGA, BUDDHA BODY YOGA &  
STRETCH\*D NEARBY

N Q R W F M 4 5 6



 LEE &  
ASSOCIATES

## SPACE DESCRIPTION

AVAILABILITY: ENTIRE 3<sup>RD</sup> FLOOR

CEILING HEIGHTS: 12'

POSSESSION: IMMEDIATE

TERM: FLEXIBLE

CURRENT INSTALLATION INCLUDES TWO LARGE OFFICES/  
MEETING ROOMS, LARGE CONFERENCE ROOM, OPEN  
PANTRY

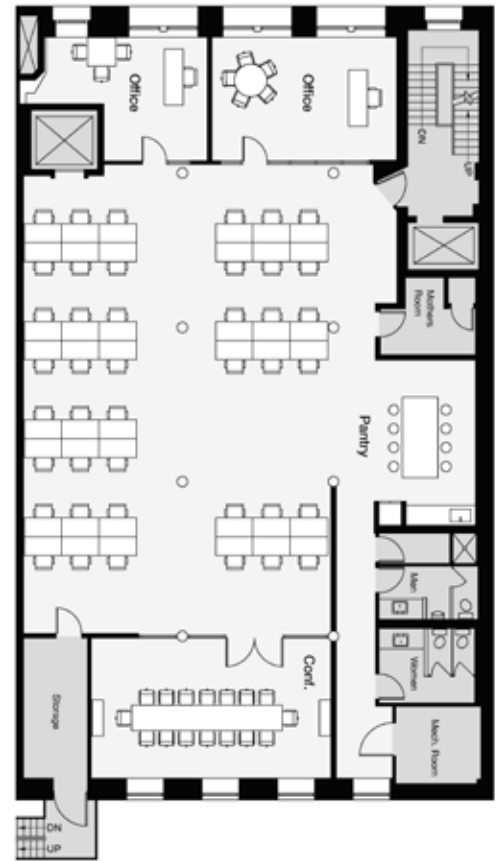
BULLPEN AREA FOR 42+ WORKSTATIONS

FULL FLOOR, HIGH CEILINGS, TENANT-CONTROLLED HVAC

ATTENDED LOBBY

LANDLORD CAN MODIFY THE EXISTING INSTALLATION,  
FURNITURE ALLOWANCE AVAILABLE

HOME TO MEDIA, VIDEO EDITING, MARKETING, AI/  
TECHNOLOGY AND VENTURE FINANCE TENANTS



### KENNETH SALZMAN, SIOR

Executive Managing Director | Principal

212.776.1227

[ksalzman@lee-associates.com](mailto:ksalzman@lee-associates.com)

### SETH ROSEN

Managing Director

212.776.1278

[srosen@lee-associates.com](mailto:srosen@lee-associates.com)

All information supplied is from sources deemed reliable and is furnished subject to errors, omissions, modifications, removal of the listing for sale or lease, and to any listing conditions, including the rates and manner of payment of commissions for particular offerings imposed by principals or agreed by this Company, the terms of which are available to principals or duly licensed brokers. Any square footage dimensions set forth are approximate.