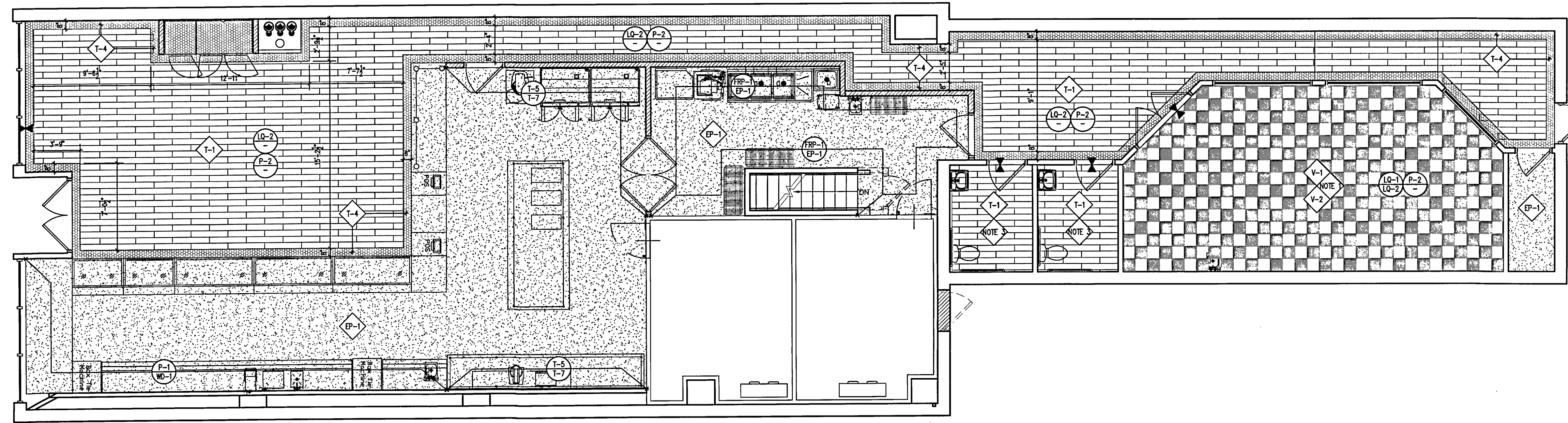
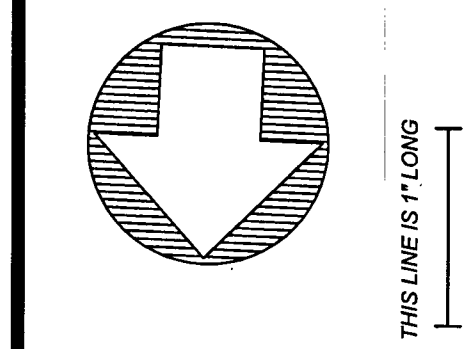
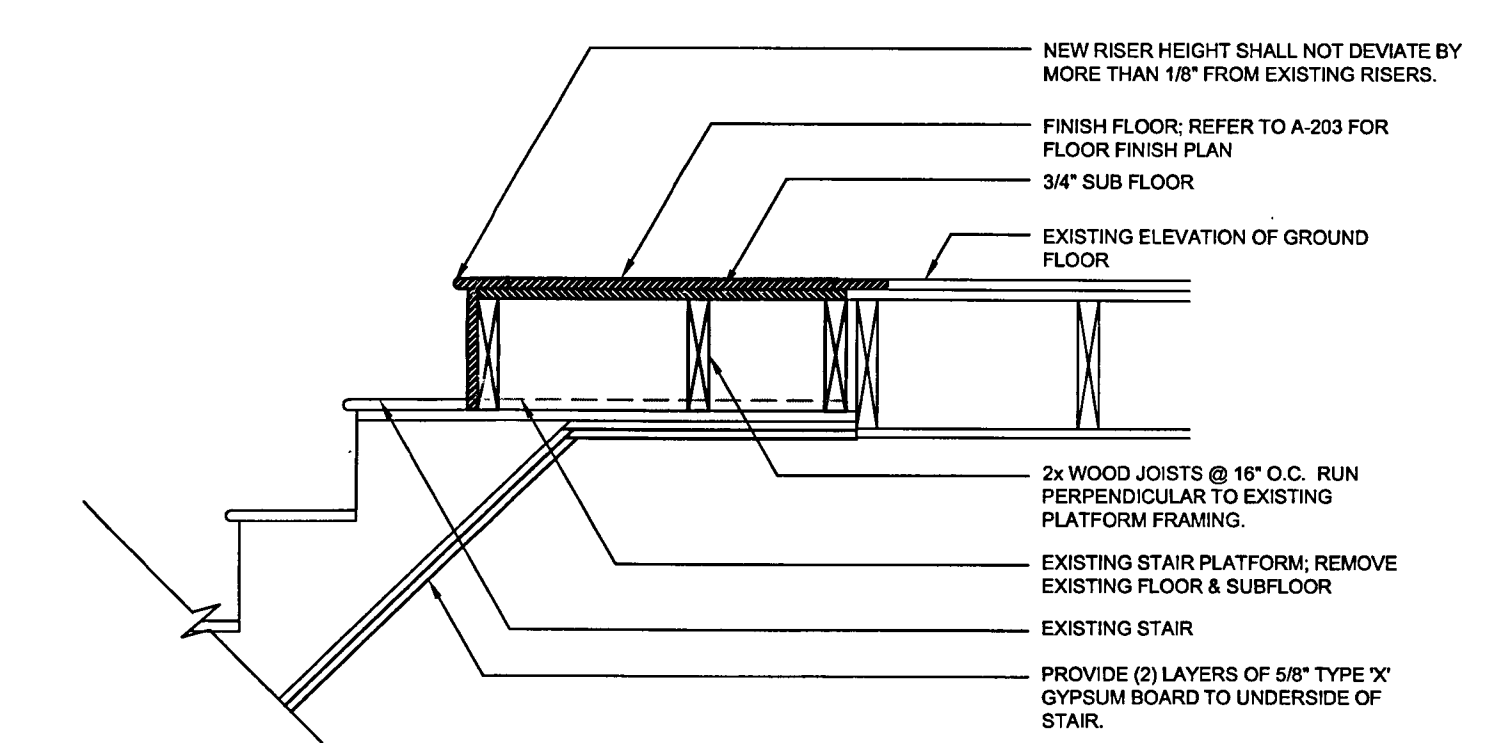


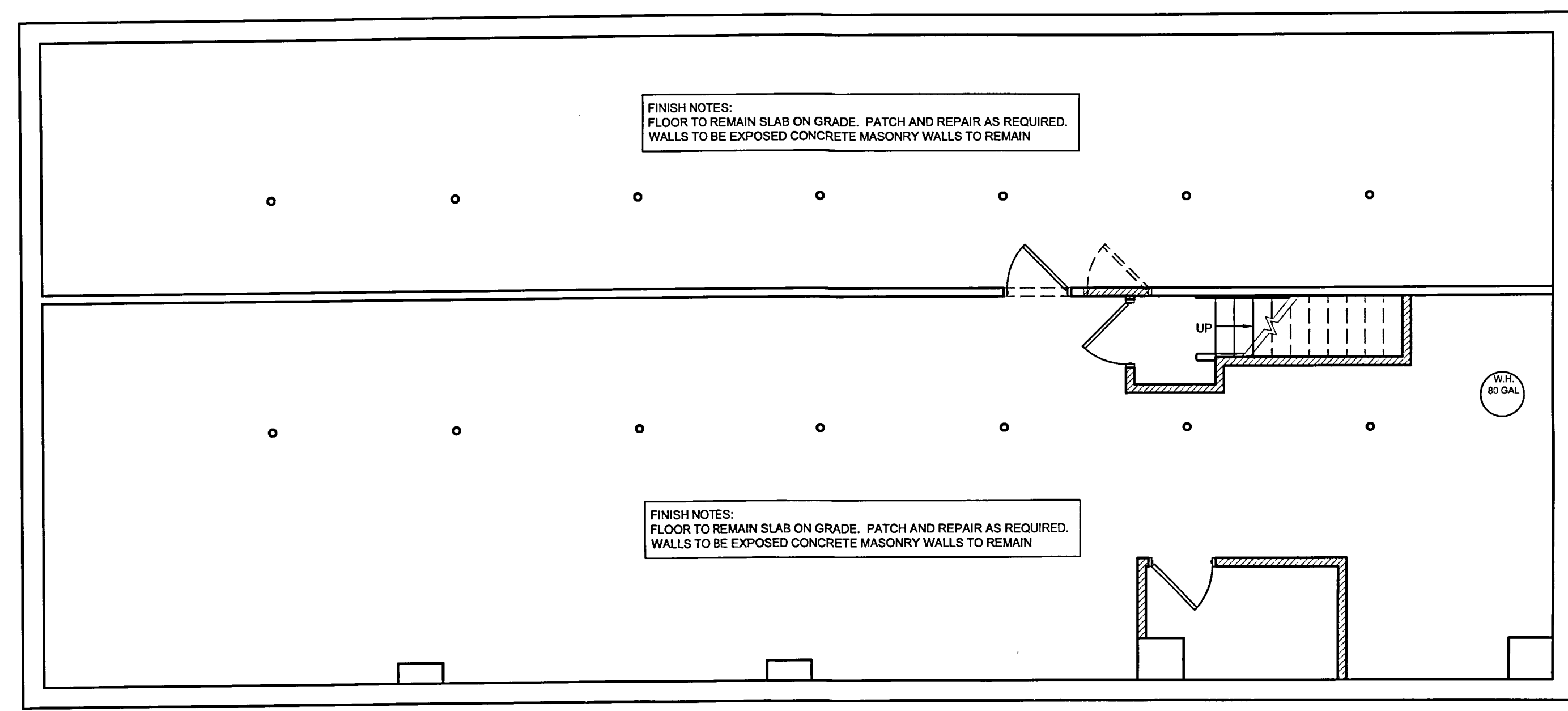
- 1 INSTALL TWO BLACK & WHITE 12" X 12" TILE CHECKER BOARD PATTERN
- 2 INSTALL 4'-6" WIDE CARLO'S BAKERY LOGO MOSAIC TILE WITHIN GENERAL HEXAGON TILE MOSAIC "T-1".
- 3 INSTALL "T-4" TILE FROM FLOOR TO 3'-0" WITH COVE BASE "T-8" AND "T-7" BULL NOSE. "P-1" PAINT FINISH ABOVE FROM 3'-0" TO CEILING.
- 4 INSTALL WAINSCOT FROM FLOOR TO 3'-0" WITH "LQ-2" FINISH



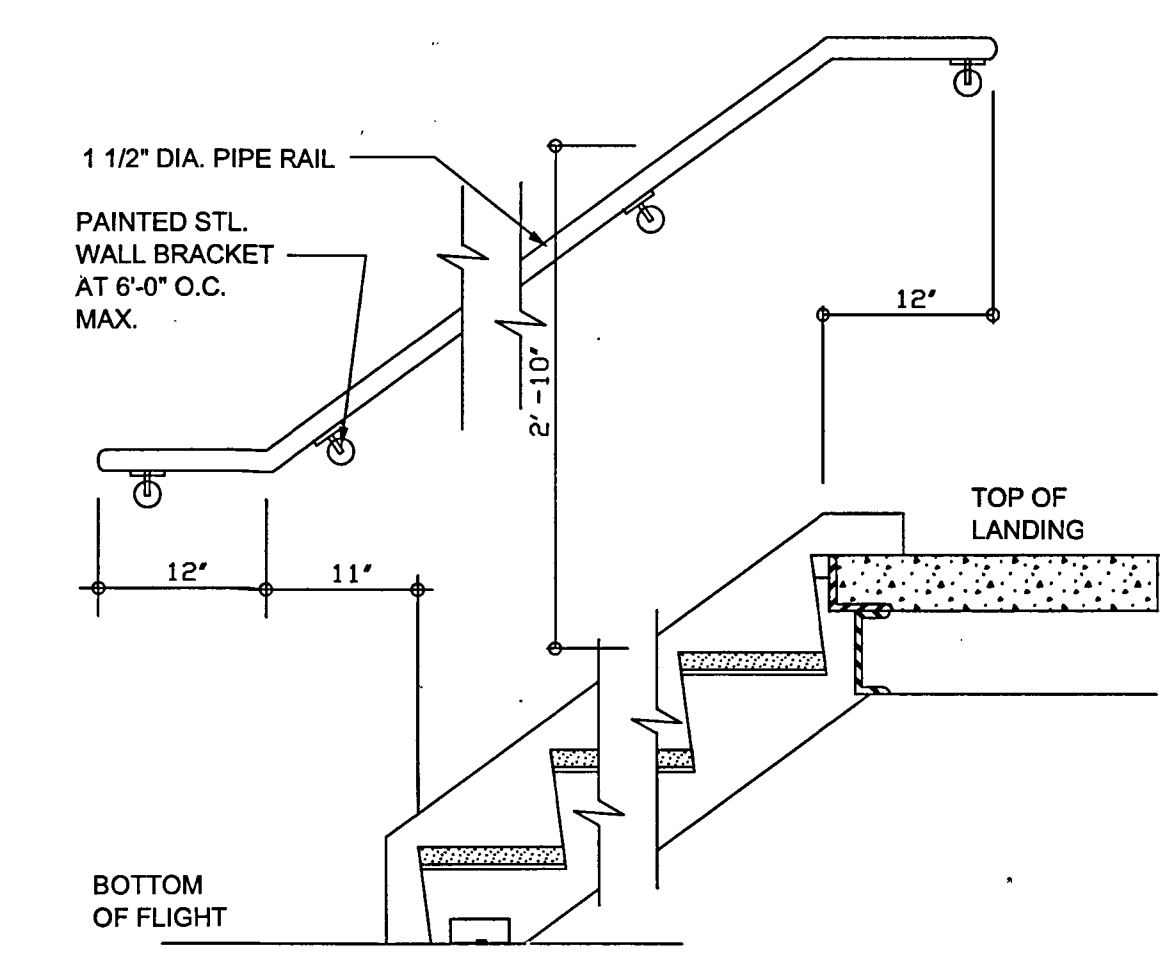
2 PROPOSED GROUND FLOOR FINISH PLAN
3/16" = 1'-0"



STAIR PLATFORM INFILL DETAIL
NTS



1 PROPOSED BASEMENT FINISH FLOOR PLAN
3/16" = 1'-0"



HAND RAIL DETAIL (WALL MOUNT)
NTS

3 STAIR DETAIL
NTS

REVISION:

THIS DRAWING ARCHITECTURAL WORK IS PROTECTED UNDER SECTION 102 OF THE COPYRIGHT ACT (TITLE 17 OF THE UNITED STATES CODE) AS AMENDED ON DECEMBER 1, 1990. ALL DOCUMENTS CONTAINED HEREIN ARE PROPERTY OF NICK TSAPATSARIS AND ASSOCIATES. ALTERATION OF THIS DRAWING, EXCEPT BY A LICENSED PROFESSIONAL ENGINEER OR ARCHITECT IS ILLEGAL. ANY ALTERATION BY A PROFESSIONAL ENGINEER OR ARCHITECT MUST BE INDICATED AND APPROVED BY NICK TSAPATSARIS AND ASSOCIATES. THE USER OF THIS DRAWING SHALL VERIFY ALL DIMENSIONS SHOWN HEREON AND SCALE OF THIS DRAWING.

DRAWN BY: B.V.
CHECKED BY: N.T.
DATE: 08-20-2013
SCALE: 3/16" = 1'-0"

Nick Tsapatsaris & Associates
Architects - Engineers
20 WILSEY SQUARE
RIDGEWOOD, NJ 07450
Phone: (201) 447-7044 Fax: 447-6074
email nick@tsapatsaris.com

PROPOSED BAKERY TENANT
86 BROAD STREET
BLOCK 46, LOT 10
RED BANK, NJ

PROPOSED
FINISH PLAN

JOB NUMBER
1359005

DRAWING NUMBER
A-203