

# JEFFERSON OFFICE PARK

2110 - 2140 SW Jefferson St | Portland, OR 97201

FOR LEASE



## OFFICE SPACE AVAILABLE FOR LEASE

### DETAILS

- Call for lease rate
- Building 2120: B300,  $\pm$  3,093 SF
- Building 2140: D200,  $\pm$  4,222 SF – Full floor available  
D300,  $\pm$  3,250 SF

### FEATURES

- In the city with FREE PARKING!
- Move-In incentives and Tenant Improvements available
- Office space with reception area and kitchenette
- Quality fixtures and finishes
- Excellent Goose Hollow location, walk to core downtown
- Right on TriMet MAX stop
- Quick, easy access to Hwy 26 & I-405
- Steps to Providence Park



05.23.2025

For more information or a property tour, please contact:

**DUANE LINK**

503.225.8465

Duanel@norris-stevens.com

**DOUG CARTER**

503.225.8499

DougC@norris-stevens.com

## Norris & Stevens

INVESTMENT REAL ESTATE SERVICES



Information contained herein has been obtained from others and considered to be reliable; however, a prospective purchaser or lessee is expected to verify all information to his/her own satisfaction.

900 SW 5th Avenue • 17th Floor • Portland, OR 97204  
503.223.3171 • norris-stevens.com

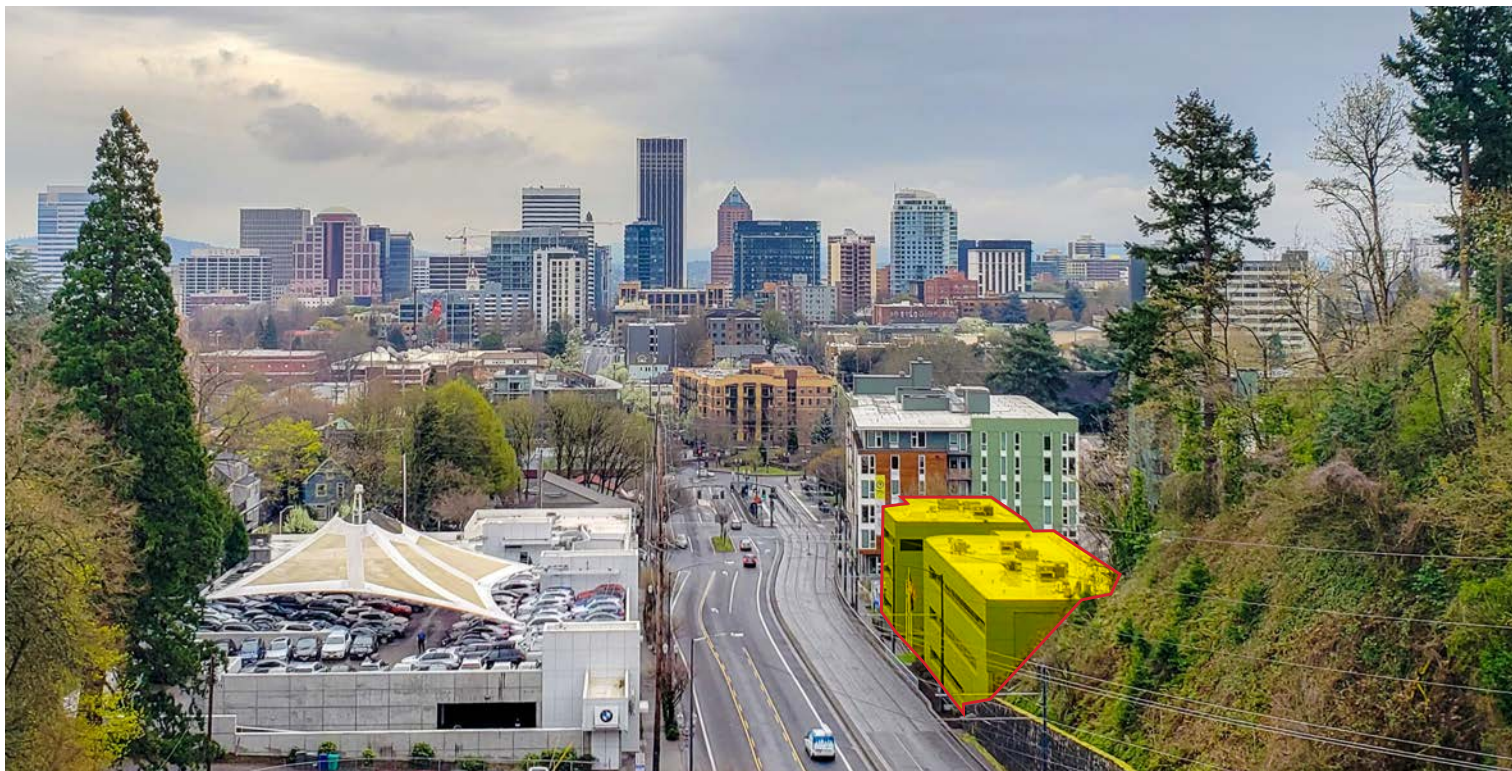


# JEFFERSON OFFICE PARK

2110 - 2140 SW Jefferson St | Portland, OR 97201

FOR LEASE

SITE AERIAL



For more information or a property tour, please contact:

**DUANE LINK**

503.225.8465

Duanel@norris-stevens.com

**DOUG CARTER**

503.225.8499

DougC@norris-stevens.com

**Norris & Stevens**

INVESTMENT REAL ESTATE SERVICES

TCN  
WORLDWIDE  
REAL ESTATE SERVICES

AMO

Information contained herein has been obtained from others and considered to be reliable; however, a prospective purchaser or lessee is expected to verify all information to his/her own satisfaction.

900 SW 5th Avenue • 17th Floor • Portland, OR 97204  
503.223.3171 • norris-stevens.com



# JEFFERSON OFFICE PARK

2110 - 2140 SW Jefferson St | Portland, OR 97201

FOR LEASE

## PROPERTY PHOTOS



For more information or a property tour, please contact:

**DUANE LINK**

503.225.8465

Duanel@norris-stevens.com

**DOUG CARTER**

503.225.8499

DougC@norris-stevens.com



Information contained herein has been obtained from others and considered to be reliable; however, a prospective purchaser or lessee is expected to verify all information to his/her own satisfaction.

## Norris & Stevens

INVESTMENT REAL ESTATE SERVICES

900 SW 5th Avenue • 17th Floor • Portland, OR 97204  
503.223.3171 • [norris-stevens.com](http://norris-stevens.com)

# JEFFERSON OFFICE PARK

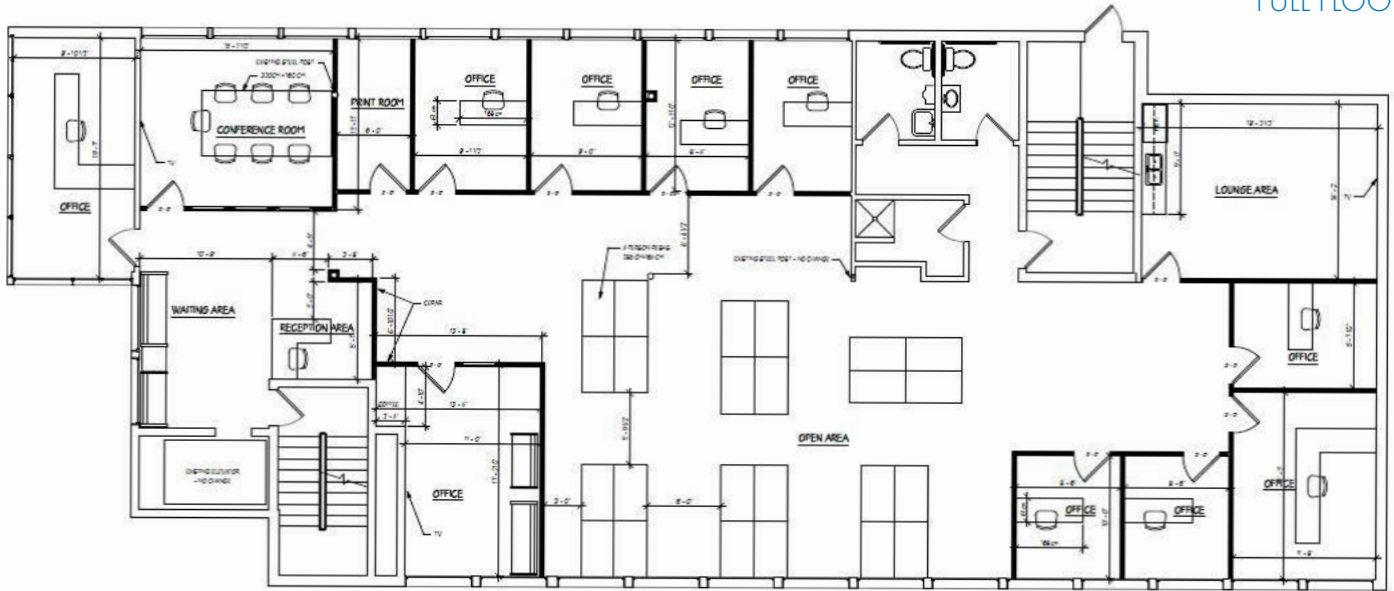
2110 - 2140 SW Jefferson St | Portland, OR 97201

## FOR LEASE

### BUILDING/SUITE PLANS

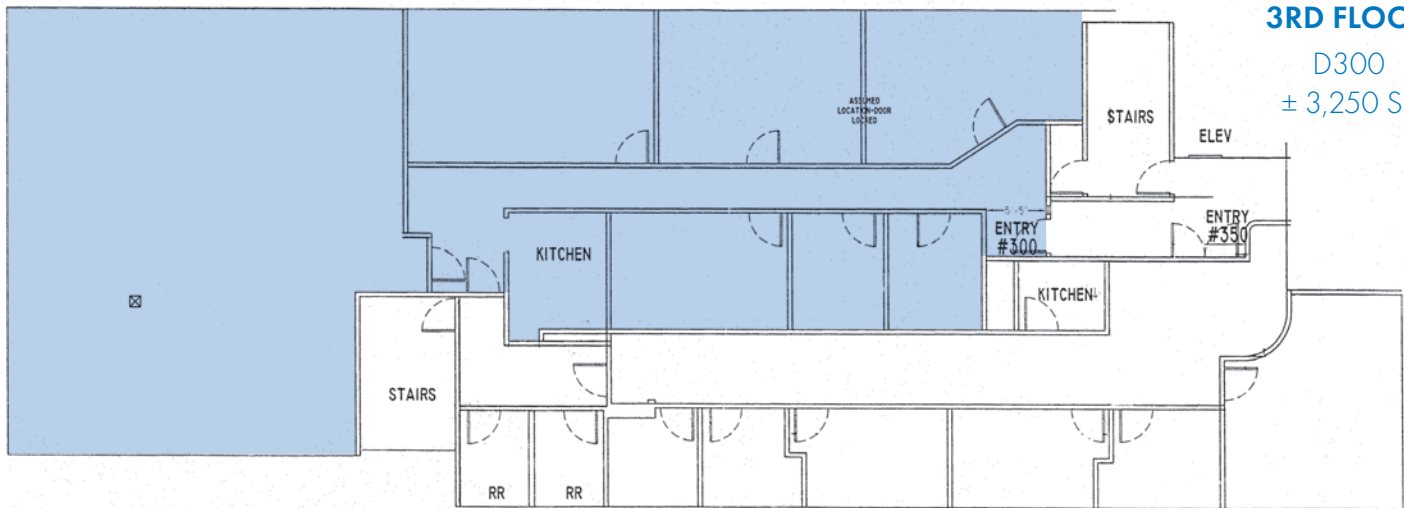
#### BUILDING 2140 2ND FLOOR

D200  
± 4,222 SF  
FULL FLOOR



#### BUILDING 2140 3RD FLOOR

D300  
± 3,250 SF



For more information or a property tour, please contact:

**DUANE LINK**

503.225.8465

Duanel@norris-stevens.com

**DOUG CARTER**

503.225.8499

DougC@norris-stevens.com

## Norris & Stevens

INVESTMENT REAL ESTATE SERVICES

TCN  
WORLDWIDE  
REAL ESTATE SERVICES

AMO

Information contained herein has been obtained from others and considered to be reliable; however, a prospective purchaser or lessee is expected to verify all information to his/her own satisfaction.

900 SW 5th Avenue • 17th Floor • Portland, OR 97204  
503.223.3171 • norris-stevens.com



# JEFFERSON OFFICE PARK

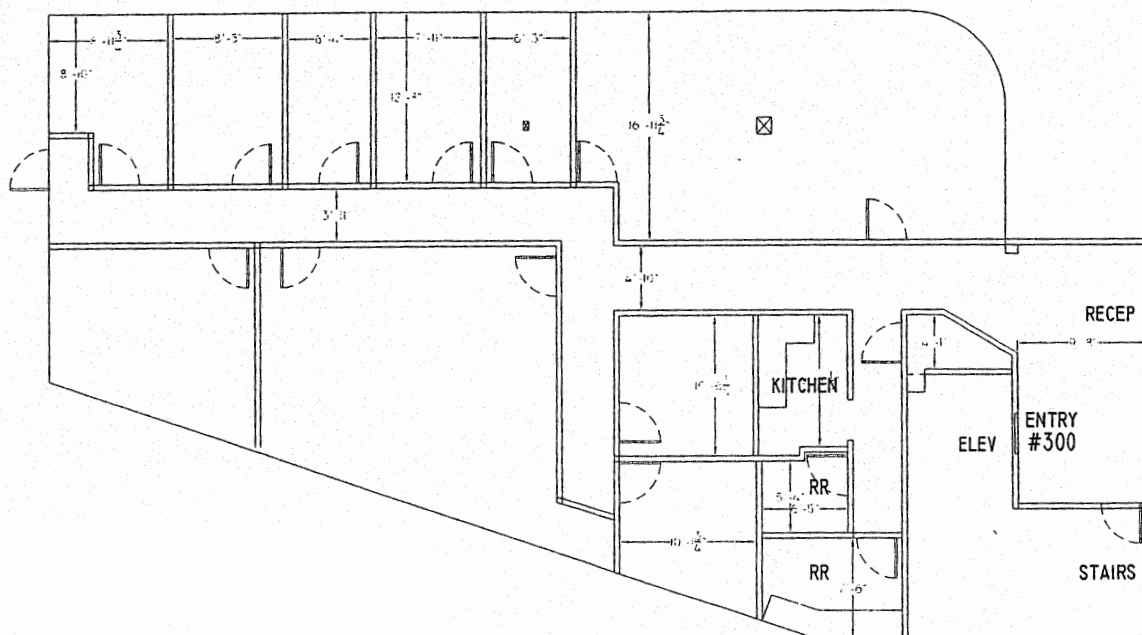
2110 - 2140 SW Jefferson St | Portland, OR 97201

FOR LEASE

## BUILDING/SUITE PLANS

### BUILDING 2120 3RD FLOOR

B300  
± 3,093 SF



For more information or a property tour, please contact:

**DUANE LINK**

503.225.8465

Duanel@norris-stevens.com

**DOUG CARTER**

503.225.8499

DougC@norris-stevens.com

## Norris & Stevens

INVESTMENT REAL ESTATE SERVICES

TCN  
WORLDWIDE  
REAL ESTATE SERVICES

AMO

Information contained herein has been obtained from others and considered to be reliable; however, a prospective purchaser or lessee is expected to verify all information to his/her own satisfaction.

900 SW 5th Avenue • 17th Floor • Portland, OR 97204  
503.223.3171 • norris-stevens.com