



For Lease
1,935 SF
Freestanding Office
with Contractors Yard

224 Johnson Avenue Hackensack, NJ

Property Features





- Total Building Size: 1,935 SF
- Lot Size: .18 Acre | 50'x150'
- Central Bergen County location
- Freestanding office building
- Currently operating construction company
- Two (2) car garage used for storage
- Truck parking permitted
- Ample parking
- Zoned Commercial & Retail
- Real Estate Taxes: \$13,189 (2023)
- Offered at \$15,000/month all in
- Seconds from Route 4
- Minutes to the GW Bridge & Manhattan

 **For *more* information**

Dominic M. Fittizzi | Vice President
201 488 5800 x135 | dfittizzi@naihanson.com

LEASE PRICE \$15,000/month

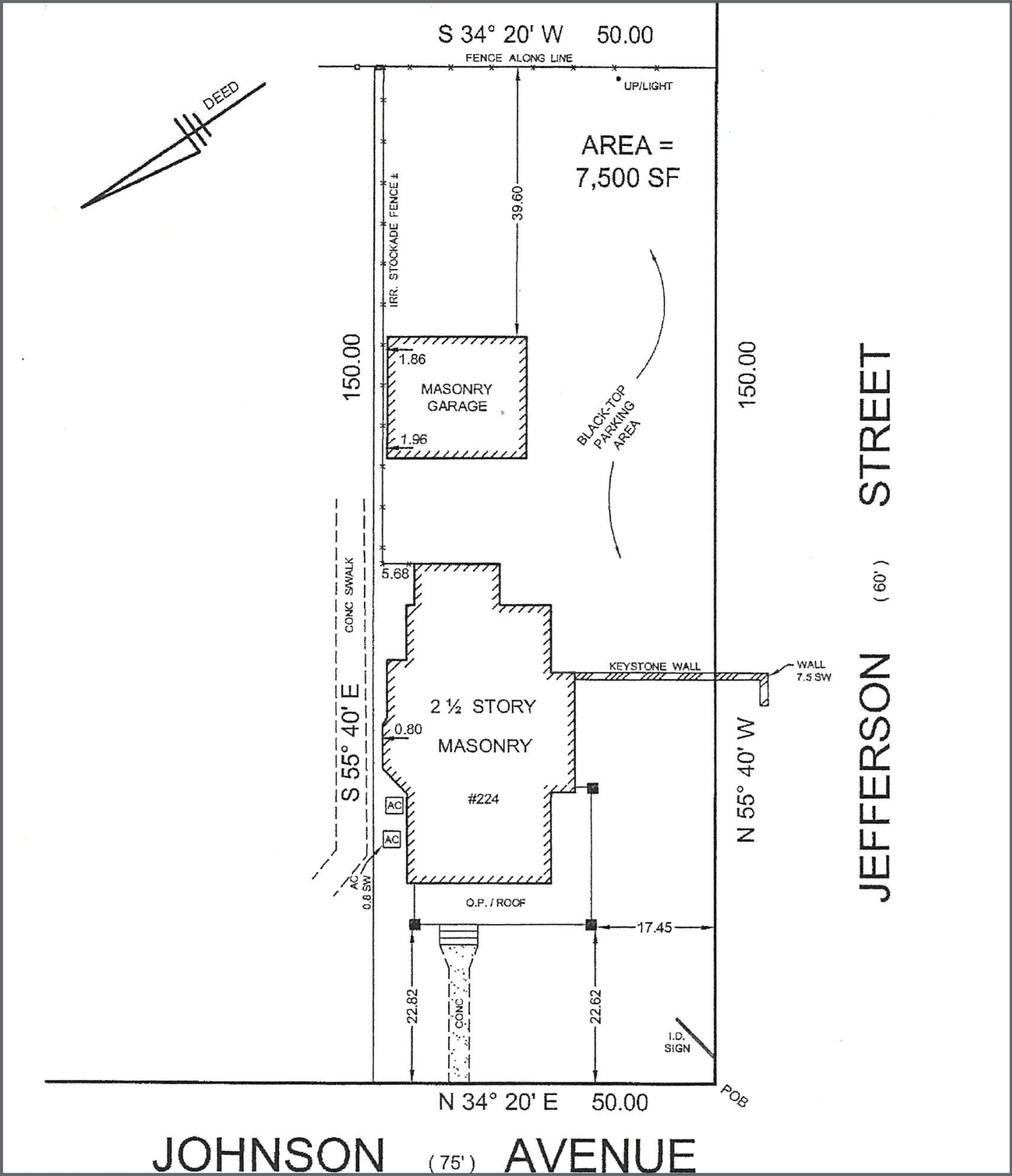
NAI James E. Hanson
COMMERCIAL REAL ESTATE SERVICES, WORLDWIDE

FOLLOW US!     | Offices: Teterboro | Parsippany | Allentown • naihanson.com | naisummit.com • Member of NAI Global with 325+ Offices Worldwide

SERVICES OFFERED

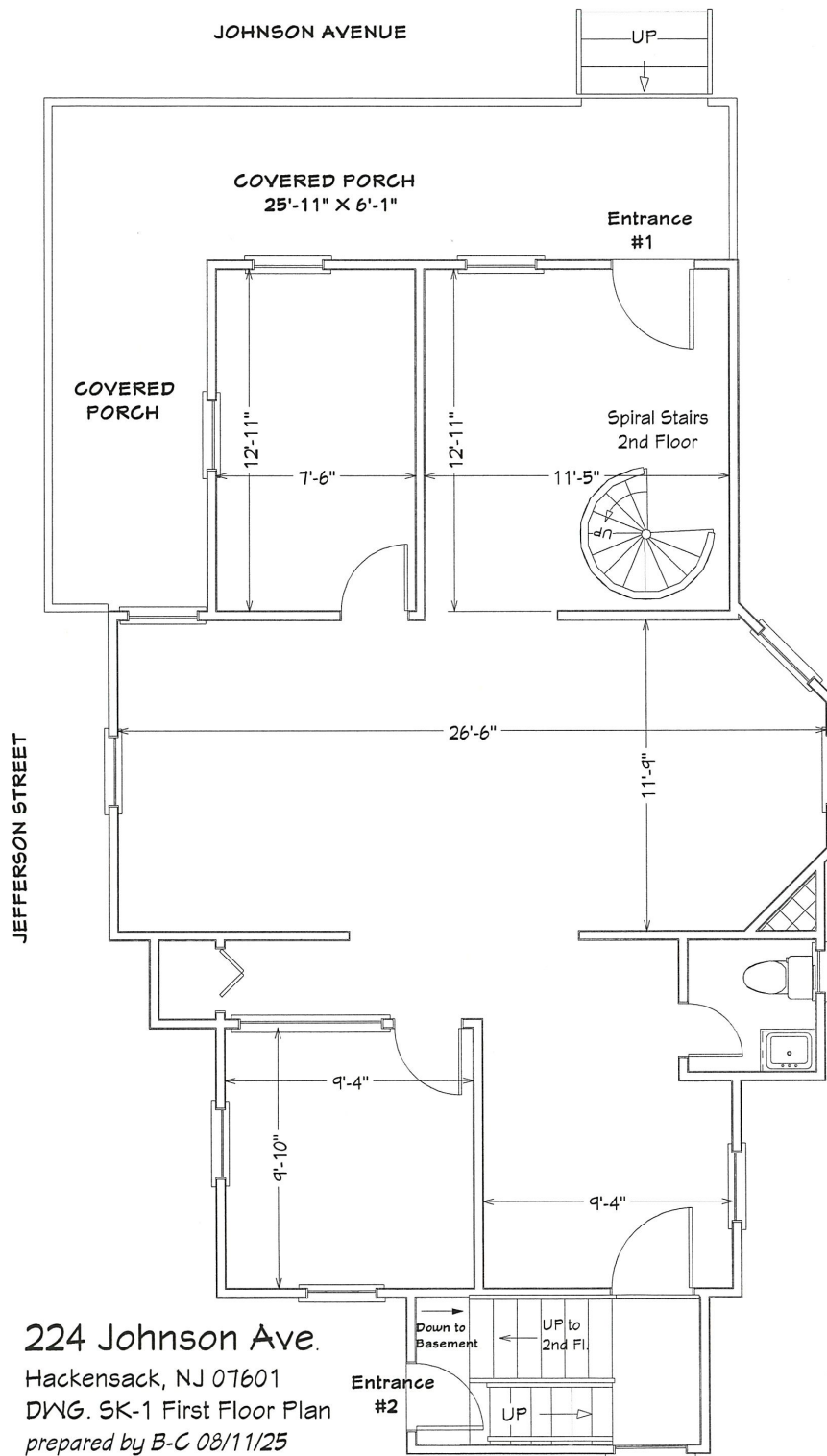
Brokerage • Property Management • Corporate Services • Financing • Tenant Representation • Cold Storage • Investment Services

THE INFORMATION CONTAINED HEREIN HAS BEEN OBTAINED FROM SOURCES CONSIDERED TO BE RELIABLE, BUT NO GUARANTEE OF ITS ACCURACY IS MADE BY NAI JAMES E. HANSON.



Floor Plan 1st Floor

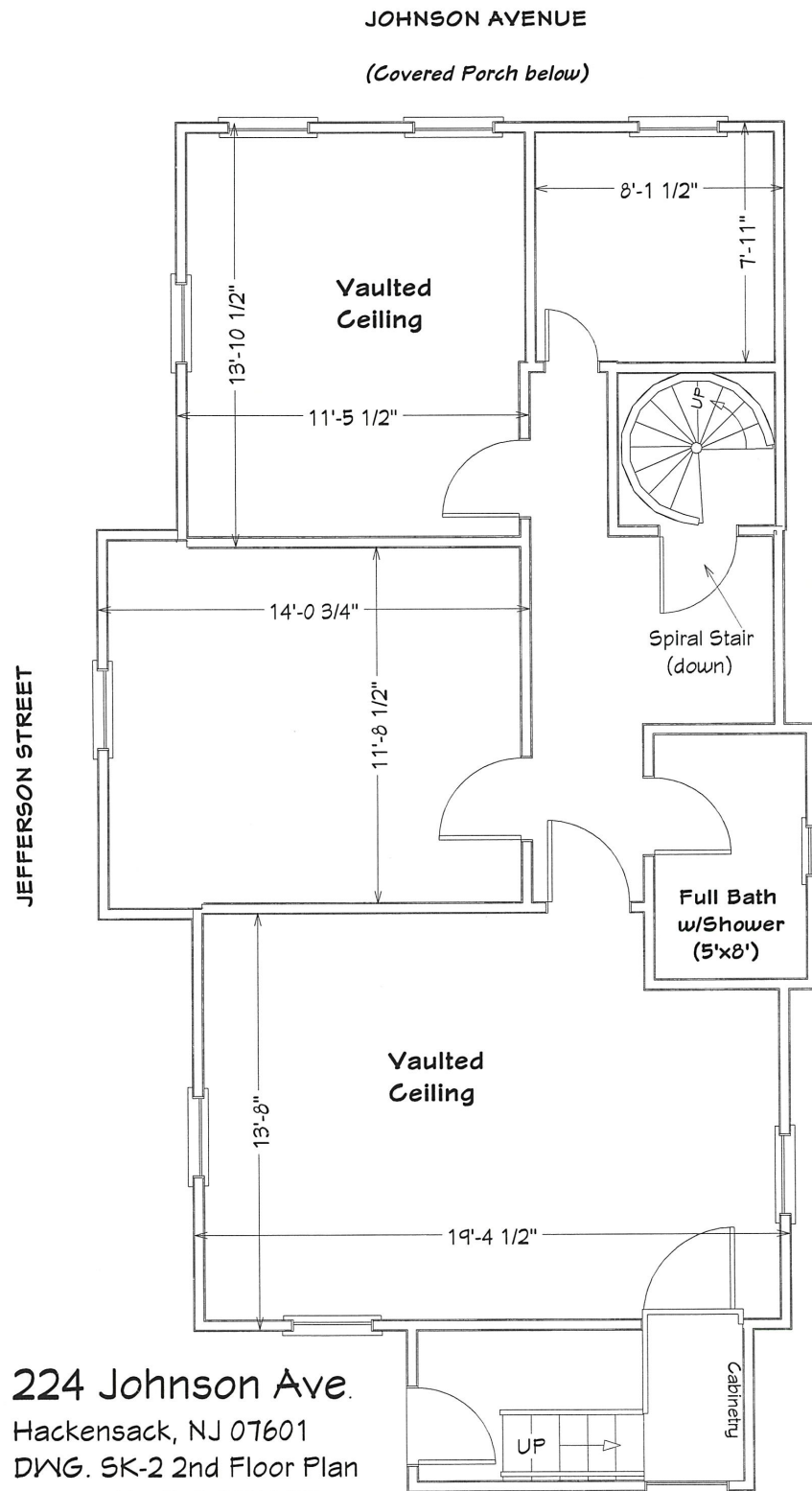
224 Johnson Ave
Hackensack, NJ



PARKING LOT & DETACHED GARAGE (REF. PROPERTY SURVEY)

Floor Plan 2nd Floor

224 Johnson Ave
Hackensack, NJ



Aerial View & Highway Map

224 Johnson Ave
Hackensack, NJ



NAI James E. Hanson
COMMERCIAL REAL ESTATE SERVICES, WORLDWIDE

THE INFORMATION CONTAINED HEREIN HAS BEEN OBTAINED FROM SOURCES CONSIDERED TO BE RELIABLE, BUT NO GUARANTEE OF ITS ACCURACY IS MADE BY NAI JAMES E. HANSON.