

AVAILABLE FOR SALE  
OFFICE BUILDING

2550 W. SHAW AVENUE  
FRESNO, CA

PRICE REDUCTION! 

PARTIALLY FURNISHED

**NEWMARK**  
PEARSON COMMERCIAL

**Nick Sorensen**  
Vice President - Office Division  
t 559-447-6240  
nsorensen@pearsonrealty.com  
CA RE Lic. #02081137

**Phil Souza**  
Senior Vice President - Office Division  
t 559-447-6283  
psouza@pearsonrealty.com  
CA RE Lic. #00853867

*Independently Owned and Operated* | Corporate License #00020875 | [newmarkpearson.com](http://newmarkpearson.com)

The distributor of this communication is performing acts for which a real estate license is required. The information contained herein has been obtained from sources deemed reliable but has not been verified and no guarantee, warranty or representation, either express or implied, is made with respect to such information. Terms of sale or lease and availability are subject to change or withdrawal without notice.



2550

W. SHAW AVENUE - FRESNO, CA

## PROPERTY INFORMATION

<b>Building Size:</b>	12,399± SF
<b>Lot Size:</b>	0.91± Acres
<b>Cross Streets:</b>	Shaw Avenue & Shaw Lane
<b>Property Type:</b>	Office Building
<b>Existing Build-Out:</b>	Fully Improved
<b>Year Built:</b>	1985
<b>Parking Ratio:</b>	4.10/1,000± SF Which Includes 26 Secured Subterranean Parking Stalls
<b>Zoning:</b>	CMX ( <i>Commercial Mixed Use</i> )
<b>APN:</b>	415-054-01
<b>Asking Price:</b>	<del>\$3,000,000</del> <b>\$2,600,000</b> (\$210.00 PSF)

### BUILDING DESCRIPTION:

The subject asset is a single-story, freestanding office building. The property features excellent exposure on Shaw Avenue as well as secured subterranean parking, a rare amenity for single-story buildings in Fresno. The structure as well as the landscaping and parking areas have been well maintained with no deferred maintenance. All HVAC units have been serviced annually with some replaced. All units have GPS-F24AC sanitizer units installed. The entrances have been CASp inspected with new sidewalks and ramps/handrails installed during remodels in 2015 and 2016. The building exterior was repainted in 2018. The building is partially furnished with cubicles, desks, chairs, etc. included in the purchase price. An itemization of the furnishings is available on request.



## PROPERTY HIGHLIGHTS



GREAT VISIBILITY



SUBTERRANEAN PARKING



SIGNAGE



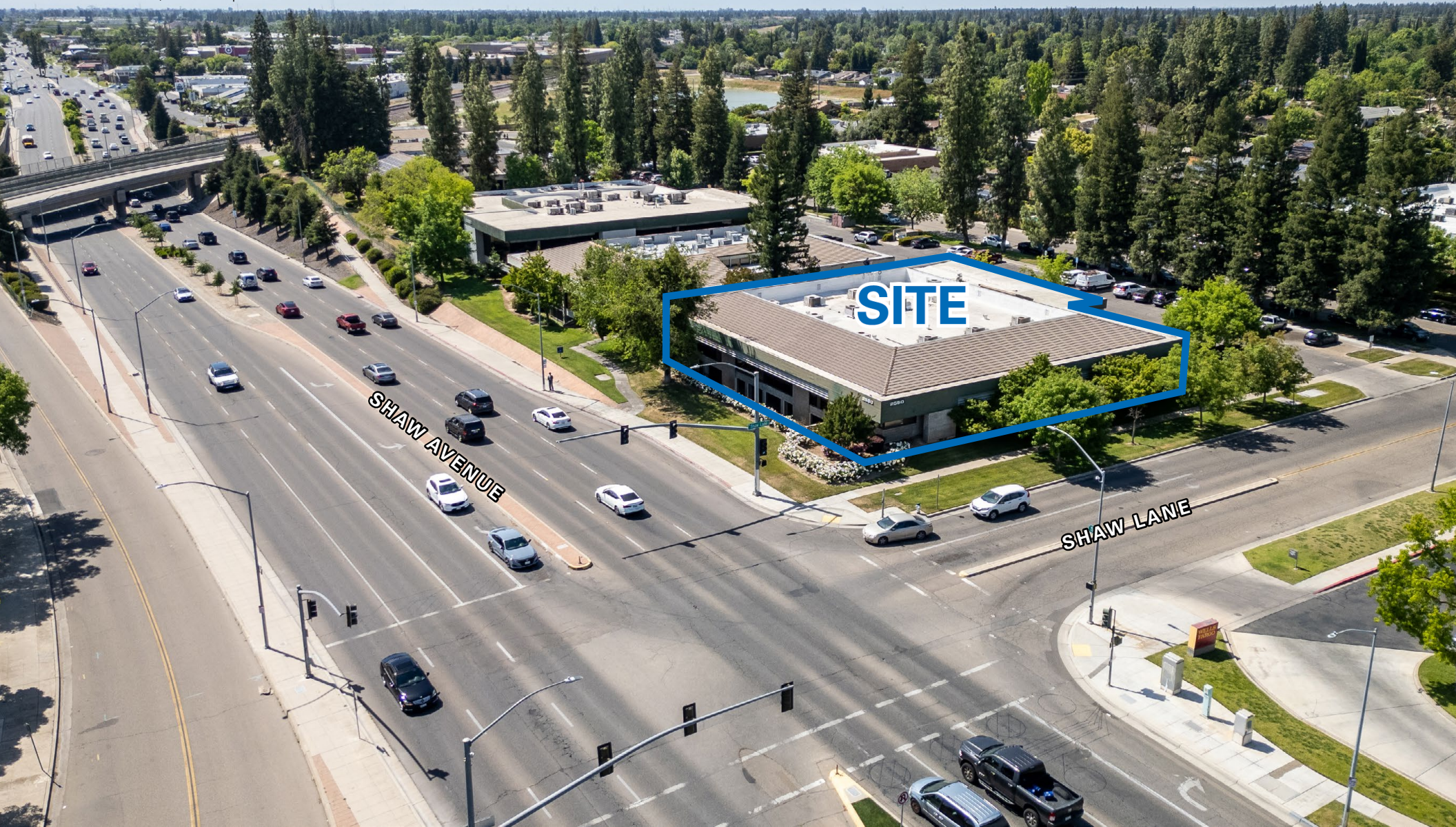
**2550**

W. SHAW AVENUE - FRESNO, CA

**AERIAL**  
OVERVIEW

#### LOCATION DESCRIPTION

The subject building is located in the West Shaw office market and equidistant from Freeways 41 and 99 offering excellent access to both major highways. The area is characterized by multiple office complexes as well as retail centers in close proximity which provides ancillary services such as banking, shopping, food service, and transportation.

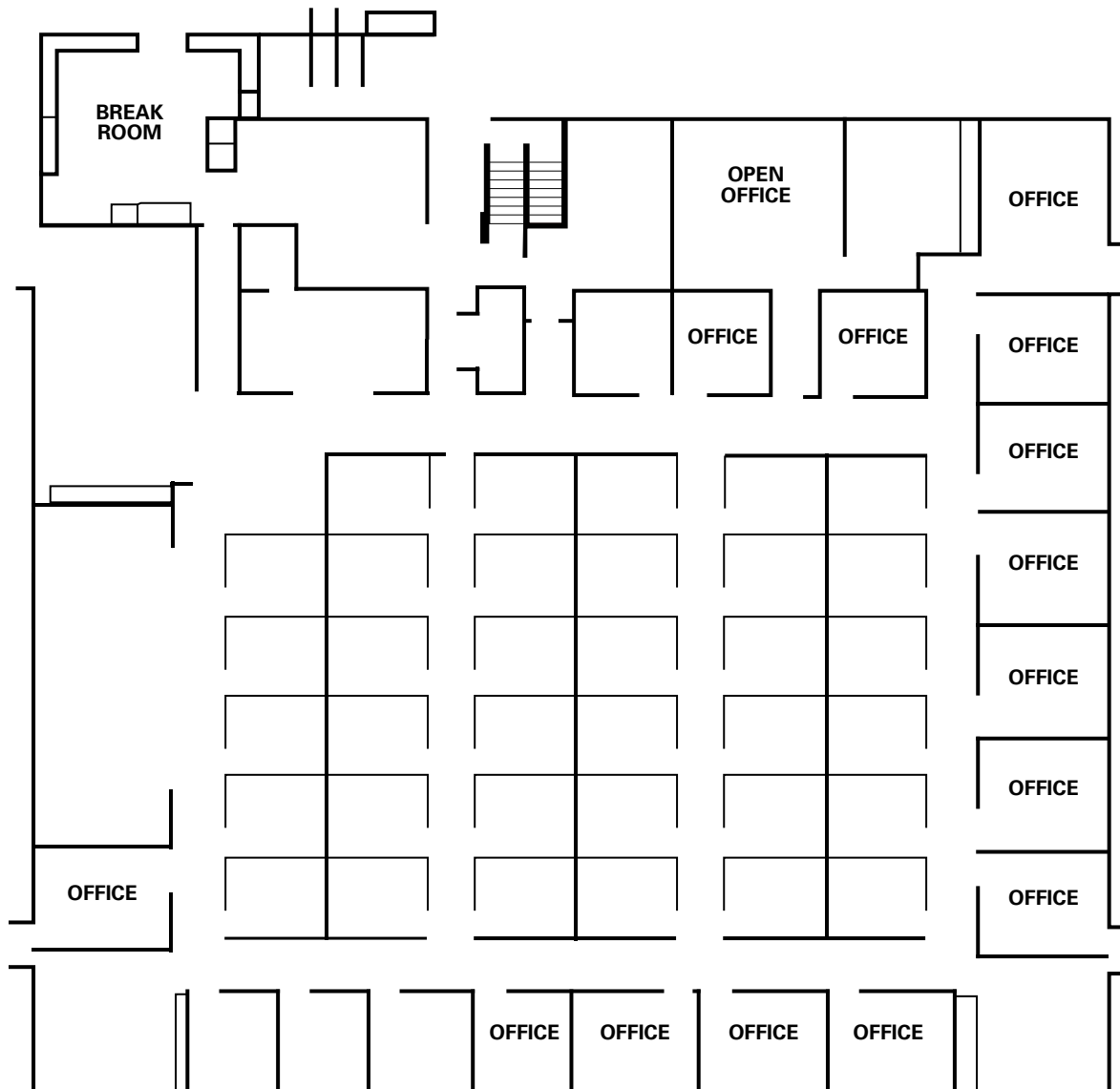




**2550**

W. SHAW AVENUE - FRESNO, CA

**FLOOR**  
PLAN





**2550**

W. SHAW AVENUE - FRESNO, CA

**PARKING**  
IMAGES





**2550**

W. SHAW AVENUE - FRESNO, CA

**INTERIOR**  
IMAGES





2550

W. SHAW AVENUE - FRESNO, CA

AERIAL  
MAP





AVAILABLE FOR SALE  
OFFICE BUILDING

# 2550 W. SHAW AVENUE

FRESNO, CA

*For information, please contact:*

**Nick Sorensen**

*Vice President - Office Division*

t 559-447-6240

nsorensen@pearsonrealty.com

CA RE Lic. #02081137

**Phil Souza**

*Senior Vice President - Office Division*

t 559-447-6283

psouza@pearsonrealty.com

CA RE Lic. #00853867

**NEWMARK**  
PEARSON COMMERCIAL

*Independently Owned and Operated*  
Corporate License #00020875  
newmarkpearson.com

**FRESNO OFFICE**  
7480 N. Palm Ave. #101  
Fresno, CA 93711  
t 559-432-6200

**VISALIA OFFICE**  
3447 S. Demaree St.  
Visalia, CA 93277  
t 559-732-7300

The distributor of this communication is performing acts for which a real estate license is required. The information contained herein has been obtained from sources deemed reliable but has not been verified and no guarantee, warranty or representation, either express or implied, is made with respect to such information. Terms of sale or lease and availability are subject to change or withdrawal without notice.