

FOR LEASE

LAKE TRUXTUN PROFESSIONAL PLAZA

6001B TRUXTUN AVE, SUITE 200
BAKERSFIELD, CA 93309



CUSHMAN &
WAKEFIELD

LAKE TRUXTUN PROFESSIONAL PLAZA

6001 B Truxtun Avenue, Suite 200



Now available for lease, this turnkey medical office suite is located in the highly sought-after Lake Truxtun Professional Plaza. Situated in a busy, high-traffic corridor near downtown Bakersfield, 6001B Truxtun Avenue delivers exceptional visibility, convenient access, and close proximity to leading healthcare providers, government offices, and the Stockdale Hwy/99 interchange.

PROPERTY HIGHLIGHTS

- This approximately ±1,442 SF suite features:
- Three private exterior entrances for patient and doctors convenience
- Welcoming reception area with front office
- Five (5) well-sized exam rooms or private offices. Recently refreshed interior with new flooring and paint
- Functional layout ideal for a range of healthcare or professional uses
- The property benefits from ample shared surface parking with carport space, landscaped common areas, and professional neighboring tenants.
- Monument signage available on Truxtun Avenue
- Lease Rate: \$2.25/RSF/Month NNN
- Tenant Improvements negotiable

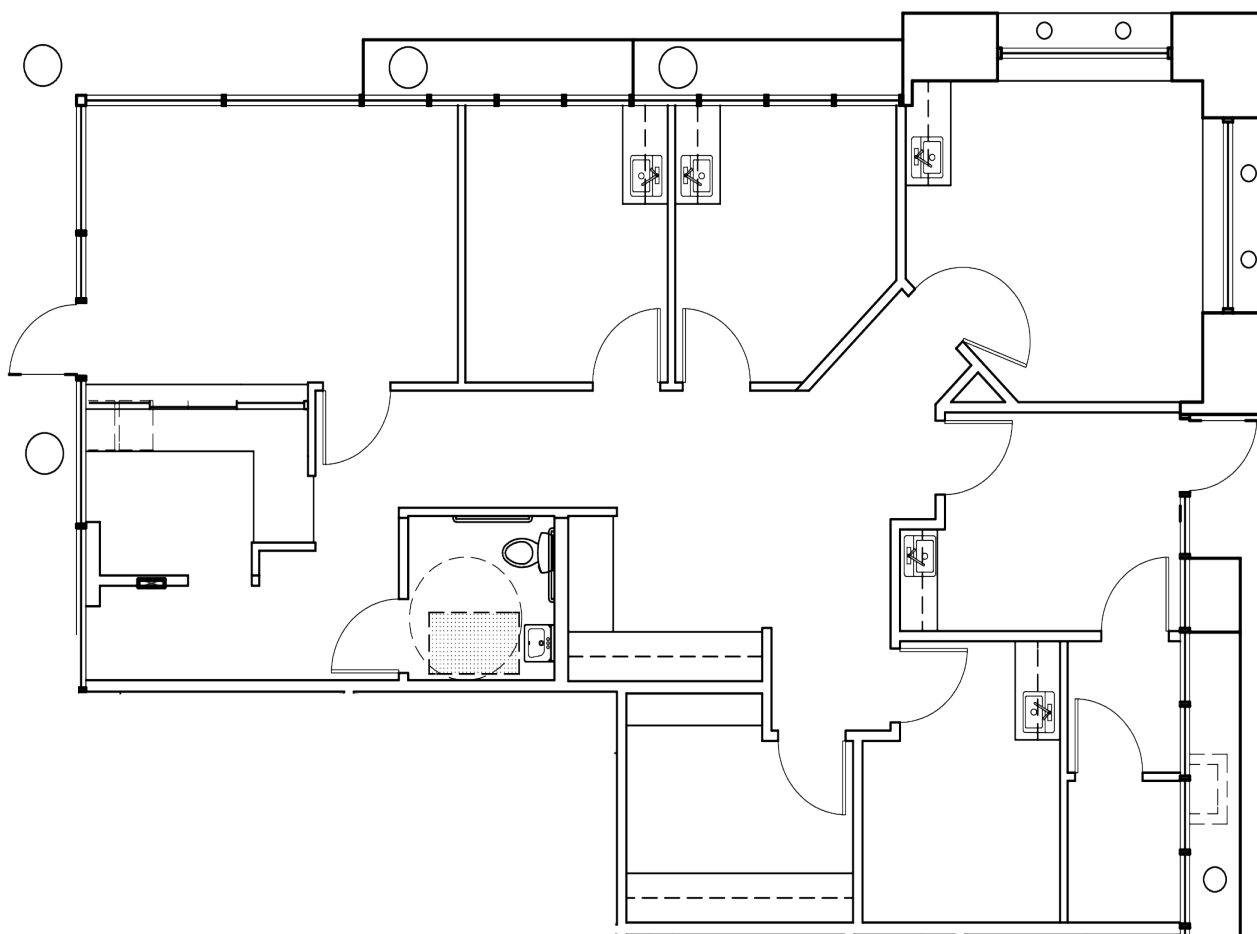
LAKE TRUXTUN PROFESSIONAL PLAZA

6001 B Truxtun Avenue, Suite 200

FLOOR PLAN

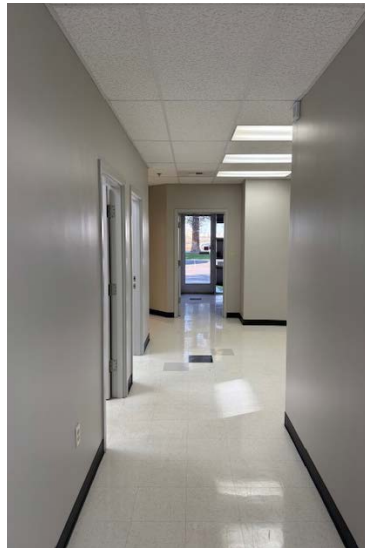
SUITE
200

±1,442 SF



LAKE TRUXTUN PROFESSIONAL PLAZA

6001 B Truxtun Avenue, Suite 200



LAKE TRUXTUN PROFESSIONAL PLAZA

6001 B Truxtun Avenue, Suite 200



WESTSIDE PARKWAY

6001B TRUXTUN AVENUE
SUITE 200

TRUXTUN AVENUE

SITE

TRUXTUN AVENUE

TRUXTUN PLAZA W

AERIAL
MAP



FOR MORE INFORMATION, CONTACT:

JEFF ANDREW
Executive Director
+1 661 633 3827
jeff.andrew@cushwake.com
Lic. 00941323

5060 California Avenue
Suite 1000
Bakersfield, CA 93309
cushmanwakefield.com

©2024 Cushman & Wakefield. All rights reserved. The information contained in this communication is strictly confidential. This information has been obtained from sources believed to be reliable but has not been verified. NO WARRANTY OR REPRESENTATION, EXPRESS OR IMPLIED, IS MADE AS TO THE CONDITION OF THE PROPERTY (OR PROPERTIES) REFERENCED HEREIN OR AS TO THE ACCURACY OR COMPLETENESS OF THE INFORMATION CONTAINED HEREIN, AND SAME IS SUBMITTED SUBJECT TO ERRORS, OMISSIONS, CHANGE OF PRICE, RENTAL OR OTHER CONDITIONS, WITHDRAWAL WITHOUT NOTICE, AND TO ANY SPECIAL LISTING CONDITIONS IMPOSED BY THE PROPERTY OWNER(S). ANY PROJECTIONS, OPINIONS OR ESTIMATES ARE SUBJECT TO UNCERTAINTY AND DO NOT SIGNIFY CURRENT OR FUTURE PROPERTY PERFORMANCE.