



FOR LEASE

395 North, Building D

RENO PARK DRIVE, RENO, NV



NEGOTIABLE
LEASE RATE

±164,640 AVAILABLE SF

MIKE NEVIS, SIOR, CCIM
775.470.8855
mike.nevis@kidder.com
LIC N° S.0061759

STEVE KUCERA, SIOR, CCIM
775.470.8866
steve.kucera@kidder.com
LIC N° S.0172550

SHAWN JAENSON, SIOR
775.470.8865
shawn.jaenson@kidder.com
LIC N° S.0188002

**Kidder
Mathews**

DEVELOPED BY



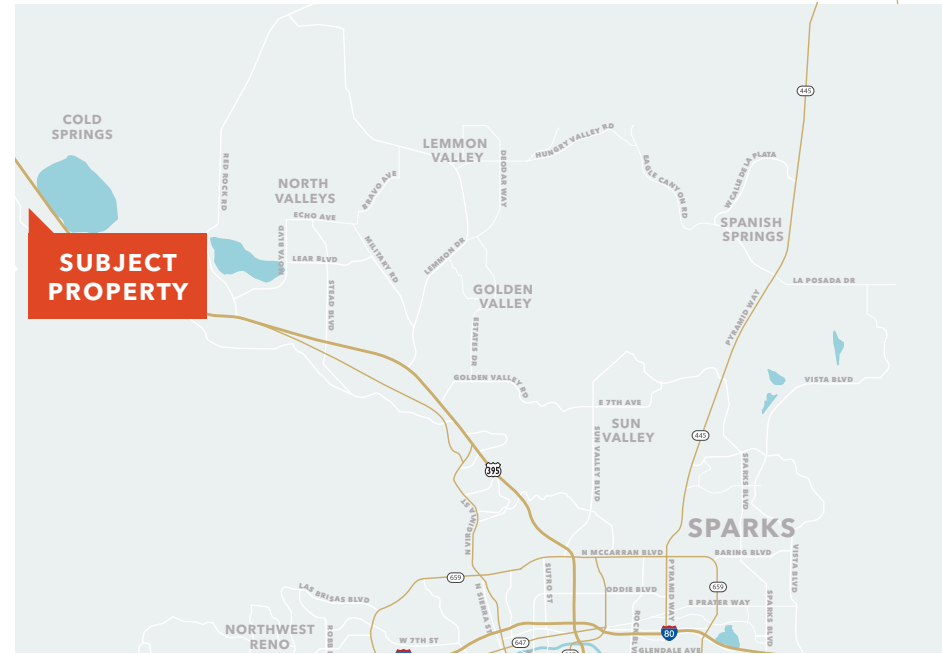
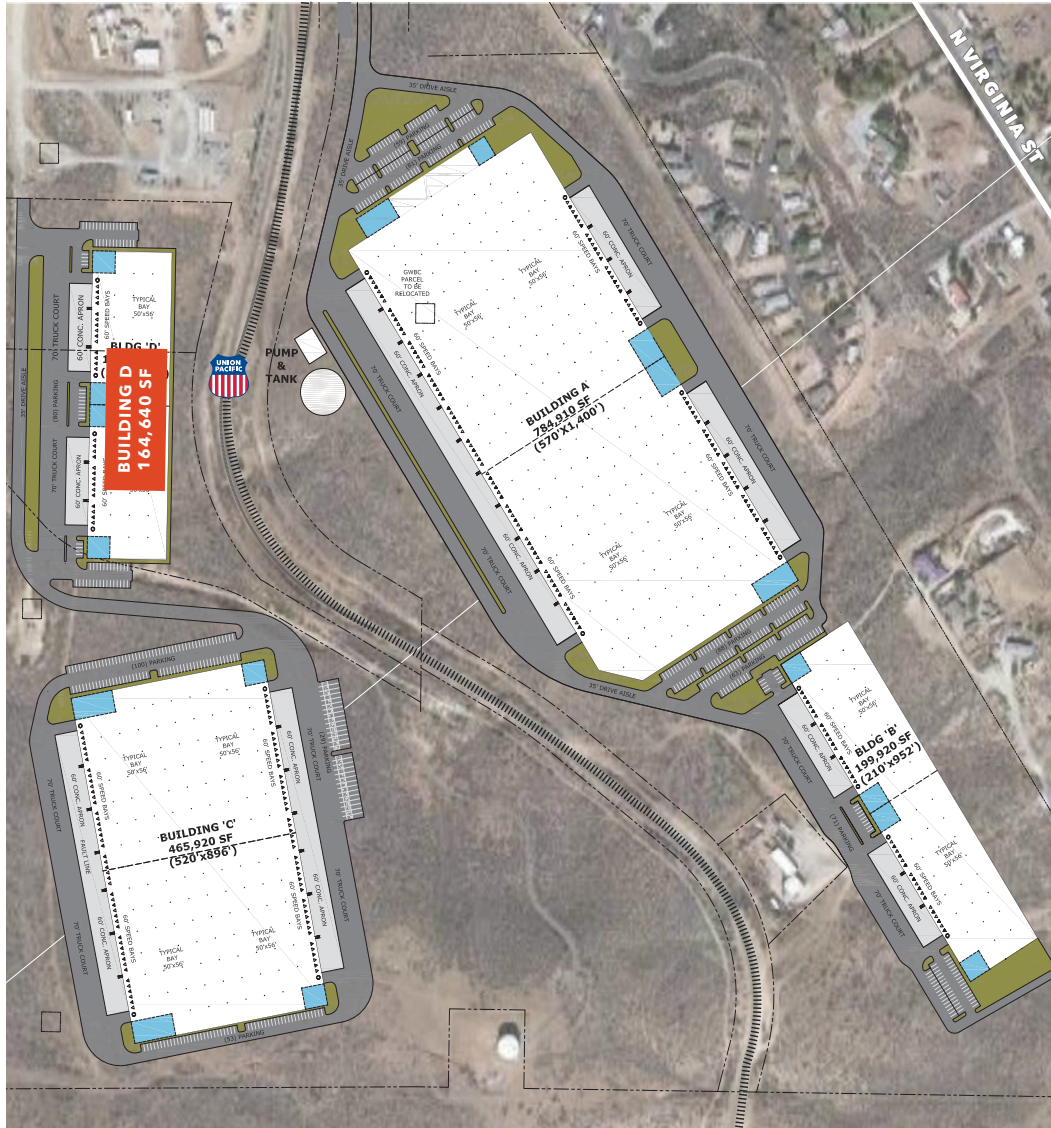
This information supplied herein is from sources we deem reliable. It is provided without any representation, warranty, or guarantee, expressed or implied as to its accuracy. Prospective Buyer or Tenant should conduct an independent investigation and verification of all matters deemed to be material, including, but not limited to, statements of income and expenses. Consult your attorney, accountant, or other professional advisor.

KIDDER.COM

FOR LEASE

395 North, Building D

RENO PARK DRIVE, RENO, NV



PROPERTY FEATURES

List Price	Negotiable
Space	±164,640 SF
Office Size	Build-to-suit
Estimated OPEX	\$0.08 - \$0.10 PSF/month
Property Website	TBD

KIDDER.COM

This information supplied herein is from sources we deem reliable. It is provided without any representation, warranty, or guarantee, expressed or implied as to its accuracy. Prospective Buyer or Tenant should conduct an independent investigation and verification of all matters deemed to be material, including, but not limited to, statements of income and expenses. Consult your attorney, accountant, or other professional advisor.

DEVELOPED BY

PANATTONI®

km Kidder Mathews

FOR LEASE

395 North, Building D

RENO PARK DRIVE, RENO, NV

Tenant Aerial



BUILDING HIGHLIGHTS

14 dock-high-doors with 35,000 lb mechanical pit type levelers

14 knock out panels for future dock-high-doors

56' X 50' column spacing

4 grade-level doors measuring 12' x 14'

32' clear height

FRONT loaded

ESFR sprinkler system

80 car parks

2,000 amps of 277/480 volt 3-phase power

7" slab unreinforced

LED lighting system (30 fc unobstructed) with motion sensors and photocells (for daylight harvesting)

ROOF SYSTEM 60 mil single ply membrane with R-19 rigid insulation above deck

FOR LEASE

395 North, Building D

RENO PARK DRIVE, RENO, NV

TRANSPORTATION

Ground	Miles
Reno-Tahoe Int'l Airport	18.6
Reno-Stead FBO	9.2
UPS Regional	20.5
FedEx Express	19.3
FedEx Ground	25.1
FedEx LTL	18.4

DEMOGRAPHICS

2023	3 mi	5 mi	7 mi
Population	9,613	13,025	31,033
Households	9,836	13,437	33,223
Avg HH Income	\$102,193	\$109,885	\$111,015
Total Employees	593	935	4,194

BUSINESS COST COMPARISONS

	NV	CA	AZ	UT	ID	OR	WA
TAX COMPARISONS							
State Corporate Income Tax	No	8.84%	4.9%	4.95%	6.925%	6.6%-7.6%	No
Personal Income Tax	No	1%-13.3%	2.59%-4.54%	4.95%	1.125%-6.925%	5%-9.9%	No
Payroll Tax	1.378%>\$50K/Q	0.380% (2019)	No	No	No	0.73%-0.7537%	No
Monthly Property Tax (based on \$25M market value)	\$22,969	\$26,041	\$68,096	\$31,850	\$34,792	\$50,000	\$21,125
Unemployment Tax	0.3%-5.4%	1.5%-6.2%	0.04%-12.76%	0.10%-7.10%	0.26%-5.4%	0.70%-5.4%	0.13%-5.72%
Capital Gains Tax	No	13.3%	4.5%	4.95%	6.93%	9.9%	No

NEVADA STATE INCENTIVES

No state, corporate or personal income tax

No estate tax, no inventory tax, no unitary tax, no franchise tax

Right-to-work state

Moderate real estate costs

Low workers' compensation rates

State-qualified employee hiring incentive

HELPFUL LINKS

Business Costs <https://www.edawn.org/site-selector/business-relocation-advantages/>

Business Incentives <https://goed.nv.gov/programs-incentives/incentives/>

Cost of Living https://www.nvenergy.com/publish/content/dam/nvenergy/brochures_arch/about-nvenergy/economic-development/costoflivingred.pdf

Quality of Life <http://edawn.org/live-play/>



Source: [NVEnergy](#)
Last updated: 2020