

Joyce Boulevard Office

Fayetteville, AR

1277 E Joyce Blvd
Fayetteville, AR 72703
www.cbre.com/fayetteville

\$35/SF



Office Space

1277 E Joyce Blvd | Fayetteville, AR 72703

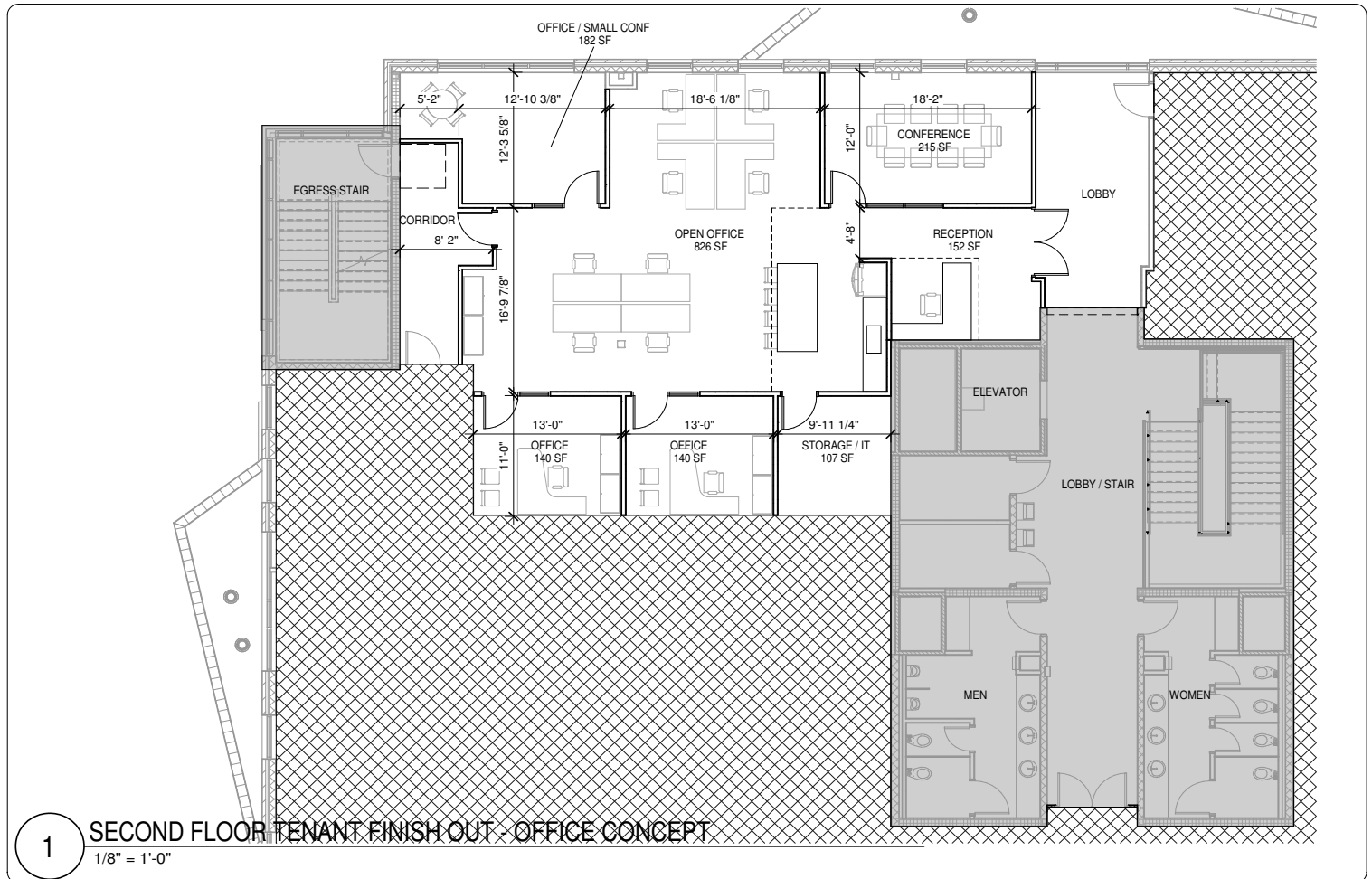
For Lease

Property Details

- + 3-Story Office Building located at the signalized intersection of Joyce Blvd and Bellafont Blvd with convenient I-49 access
- + Available Space
 - 2nd Floor: $\pm 2,182$ RSF/ $\pm 1,844$ USF
- + Lease Rate: \$35.00/SF - Full Service Net Jan.
- + Parking Ratio: 4.65 \pm per 1,000 parking
- + Move-in ready
- + Razorback Greenway Access and Nearby Amenities
- + Near Goddard School, Firehouse Subs, Mellow Mushroom, New Multi-family, etc.
- + Agent co-owned



Floor Plan



Office Space

1277 E Joyce Blvd | Fayetteville, AR 72703

For Lease

Building Photos



Office Space

1277 E Joyce Blvd | Fayetteville, AR 72703

For Lease



Contact Us

David Erstine, SIOR, CCIM

Senior Vice President
+1 479 249 6199
david.erstine@cbre.com

Hunter Groce

Senior Associate
+1 479 249 9520
hunter.groce@cbre.com

Alex Reed

Associate
+1 479 249 9560
alex.reed1@cbre.com

© 2024 CBRE, Inc. All rights reserved. This information has been obtained from sources believed reliable, but has not been verified for accuracy or completeness. You should conduct a careful, independent investigation of the property and verify all information. Any reliance on this information is solely at your own risk. CBRE and the CBRE logo are service marks of CBRE, Inc. All other marks displayed on this document are the property of their respective owners, and the use of such logos does not imply any affiliation with or endorsement of CBRE. Photos herein are the property of their respective owners. Use of these images without the express written consent of the owner is prohibited.

www.cbre.com/fayetteville

