



735 S Garfield Ave Traverse City, MI

Professional office building conveniently located on Garfield Ave, a North/South business corridor on the East side of the City of Traverse City.

MOATS
OFFICE PROPERTIES

Office: 847-359-2121
Ryan Moats: 847-363-9700



735 S Garfield Ave Traverse City, MI

About Us

For over twenty years, Moats Office Properties has owned and operated office buildings in Chicago's Northwest Suburbs. We are a family owned and operated business and strive for the best in customer satisfaction.





Transportation

- 7 minute drive to Cherry Capital Airport
- 8 minute drive from Greyhound bus stop

Property Overview

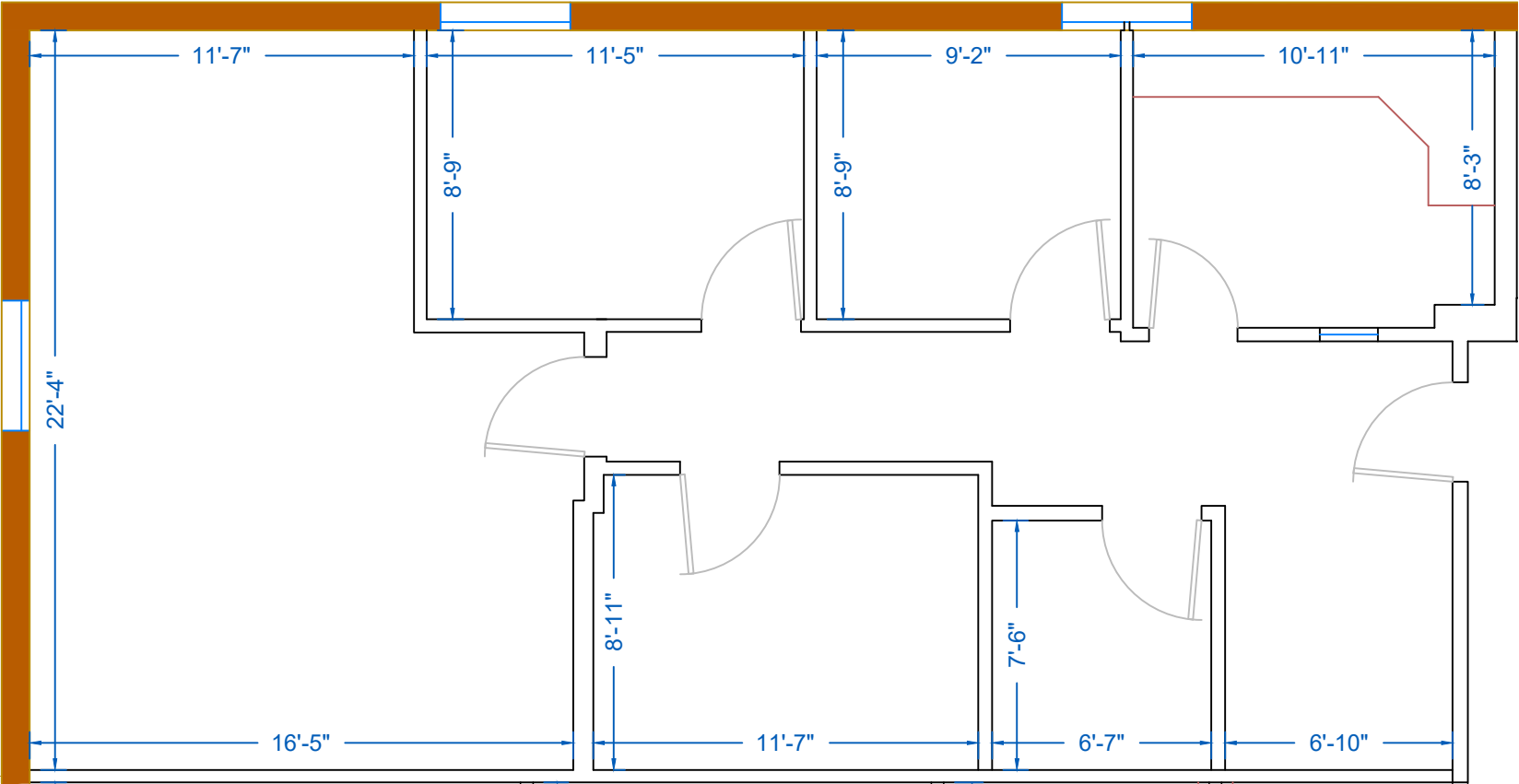
- 1,360 Square Feet Available
- 2 Stories and a basement
- Surface Parking
- Gas Heat
- Storage
- 24 Hour Access
- Elevator

MOATS
OFFICE PROPERTIES
Office: 847-359-2121
Ryan Moats: 847-363-9700



Garfield Professional Center

735 Garfield Ave, Suite 203
1,284 Rentable Square Feet



Scale: 3/16" = 1'-0"

PO Box 1189
Palatine, IL 60078

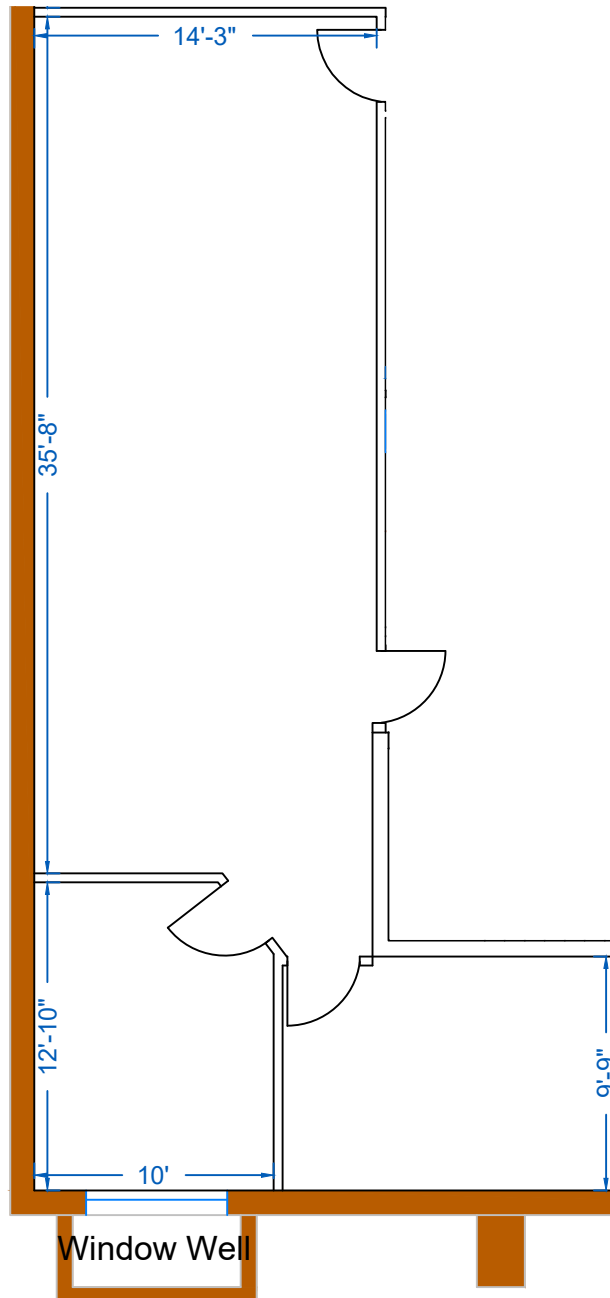
MOATS
OFFICE PROPERTIES

Office: 847-359-2121
Ryan: 847-363-9700



735 S Garfield Ave

735 S Garfield Ave. Suite B100
1,091 Rentable Square Feet



Scale: 1/8" = 1'-0"

PO Box 1189
Palatine, IL 60078

MOATS
OFFICE PROPERTIES

Office: 847-359-2121
Ryan: 847-363-9700



735 S Garfield Ave Traverse City, MI

Overview

This building is perfect for any office. It is located in the heart of Traverse City, close to restaurants, hotels, Sunset Beach and Bryant Park.





735 S Garfield Ave
Traverse City, MI



MOATS
OFFICE PROPERTIES

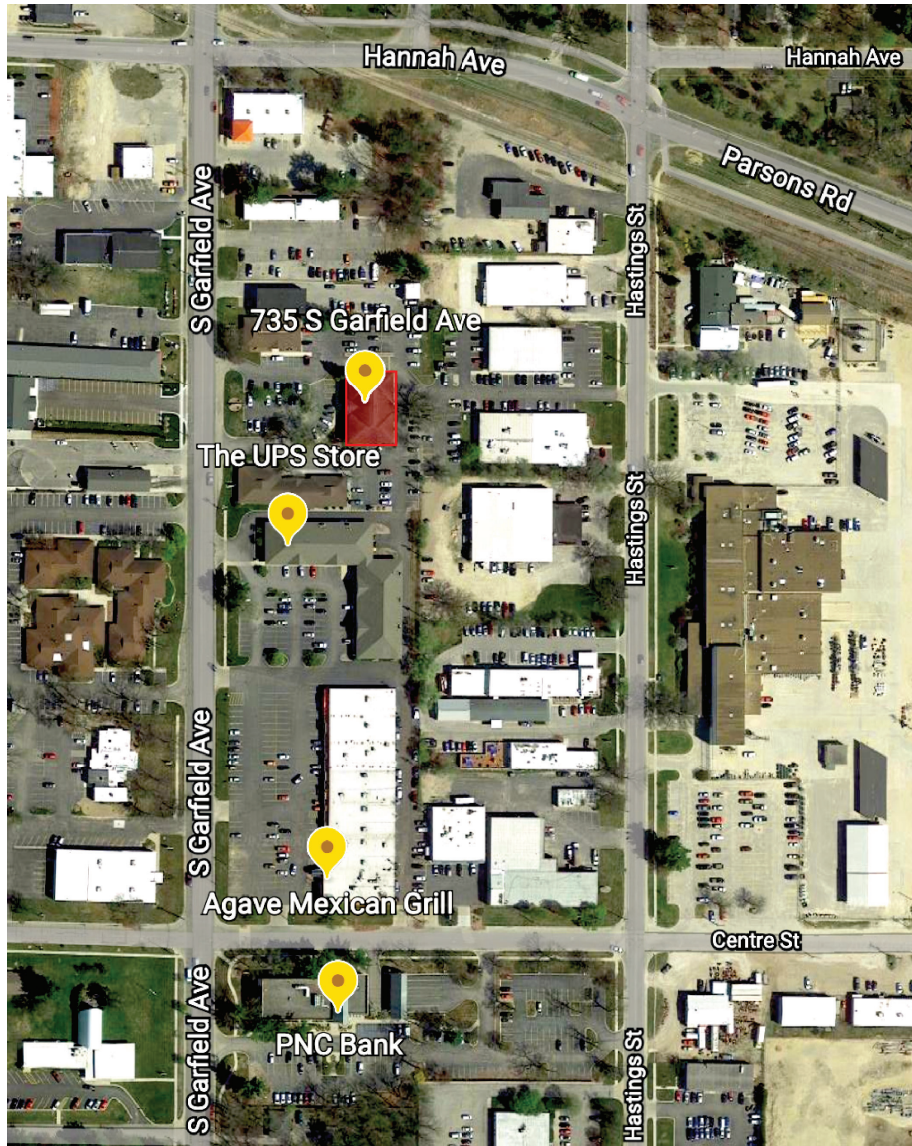
Office: 847-359-2121

Ryan Moats: 847-363-9700



735 S Garfield Ave

Traverse City, MI



 735 S Garfield Ave
Traverse City, MI

MOATS
OFFICE PROPERTIES
Office: 847-359-2121
Ryan Moats: 847-363-9700



735 S Garfield Ave
Traverse City, MI

Notes

To learn more,
visit our website
or scan QR Code:



<https://www.moatsoffice.com>

MOATS
OFFICE PROPERTIES
Office: 847-359-2121
Ryan Moats: 847-363-9700