



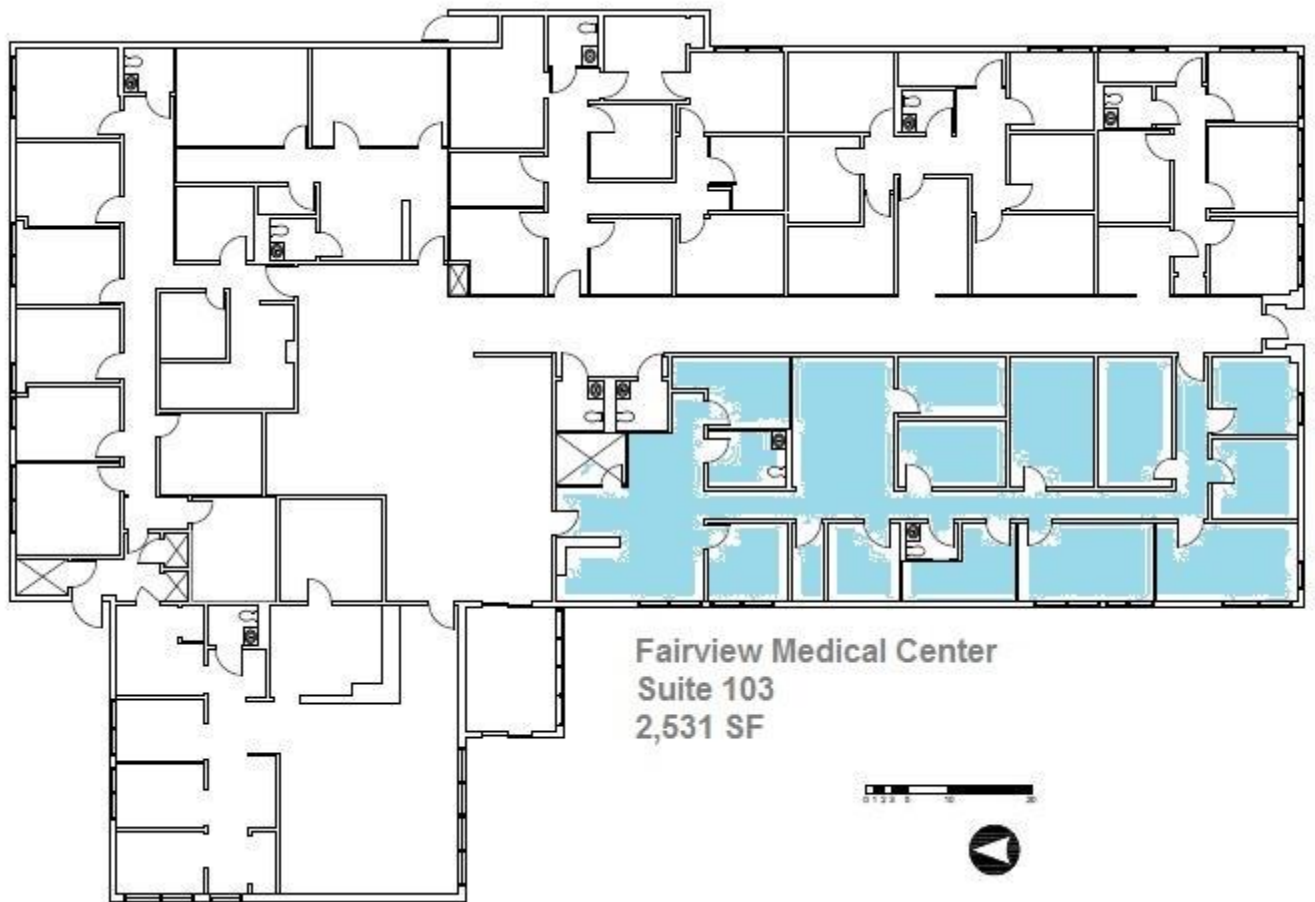
Fairview Medical Center Downers Grove

Location: Ideal Location in Downers Grove on the corner of 63rd Street & Fairview Avenue. Du Page County Location and convenient to all area hospitals and major area health care providers. Wide trade area includes Downers Grove, Westmont, Hinsdale, Clarendon Hills, Willowbrook & Woodridge.

CHRAMKO REAL ESTATE CORPORATION
113 S. Garfield Street, Suite 200, Hinsdale, IL 60521
(630) 986-9400

Available: Suite 101

- 2,584 RSF
- Reception/Waiting Area with Built In Reception Counter/Desk
- 6-7 Exam Rooms
- Private Offices
- Break Room/Kitchen
- Lab
- Secure Storage
- Abundant Natural Light
- New Cabinets, Sinks & Finishes
- 2 Private Restrooms
- Turnkey Medical Office

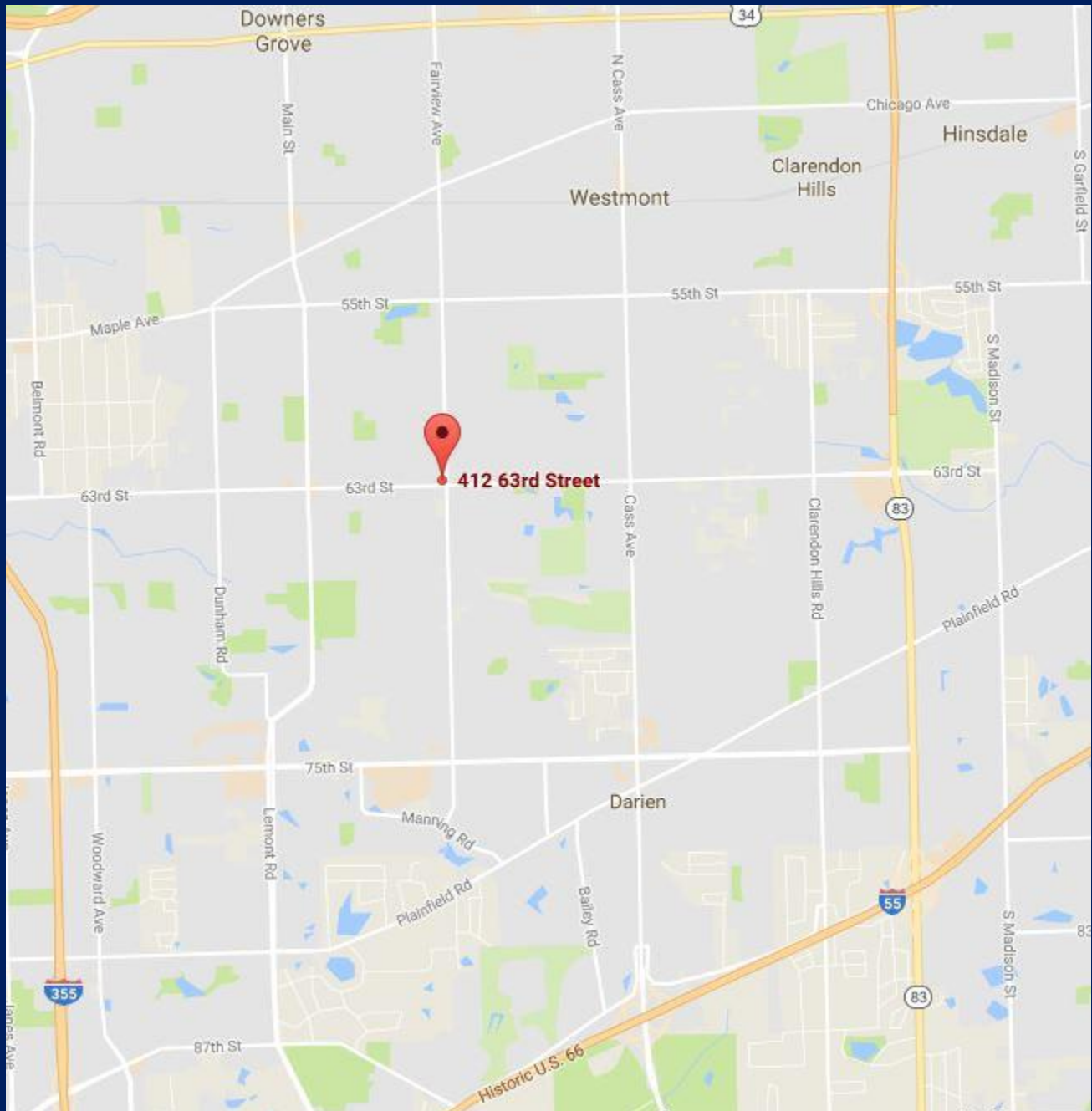








**Fairview Medical Center
Downers Grove**



Chris Schramko
(630) 986-9400 or cjschramko@schramko.com
113 S. Garfield Street, Suite 200, Hinsdale, IL 60521

All information is from sources believed reliable, not independently verified, and thus subject to errors, omissions, and modifications such as price, listing, square footage, rates and commissions. All information, including market assumptions and conditions, are subject to change, and the changes could be material. SREC makes no express or implied representations or warranties, as facts and results may vary materially from all information, estimates and projections. Properties are subject to prior sale, withdrawal and other sales or rental conditions. Terms are subject to errors, omissions and change without notice.