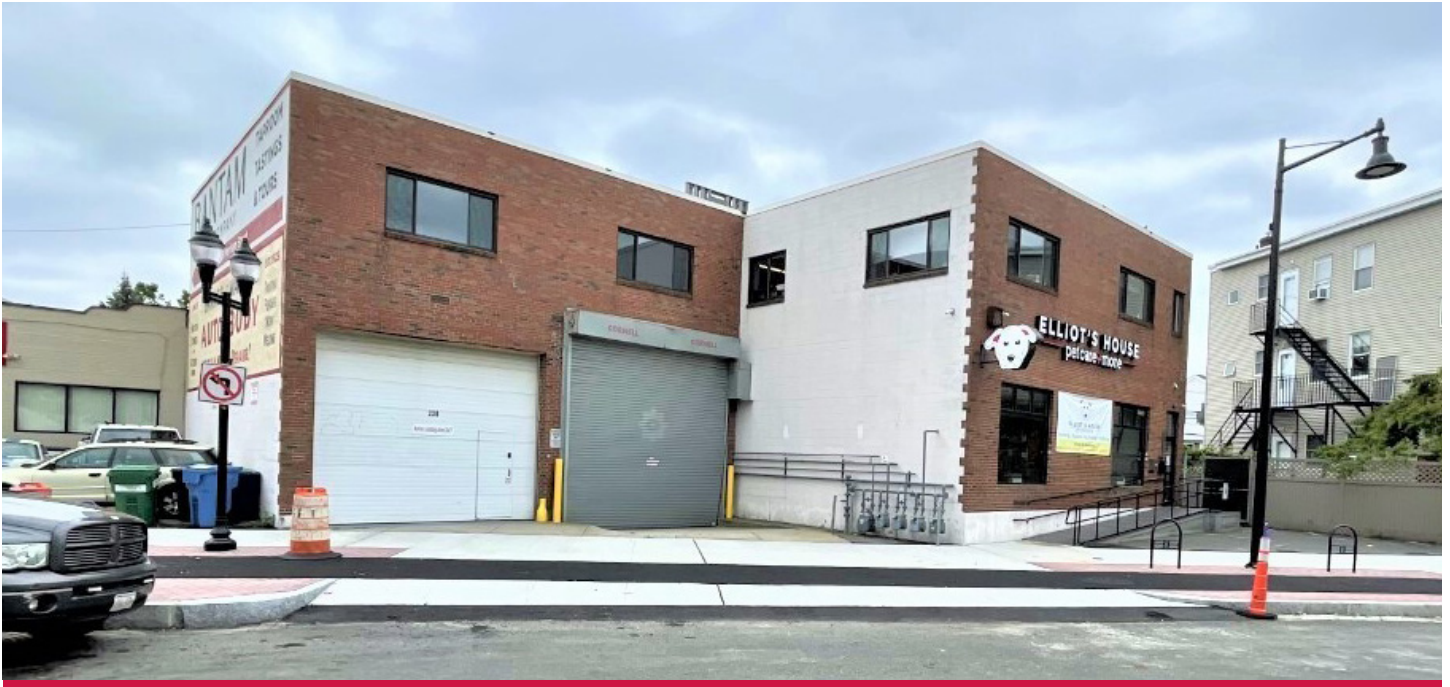


230 SOMERVILLE AVENUE

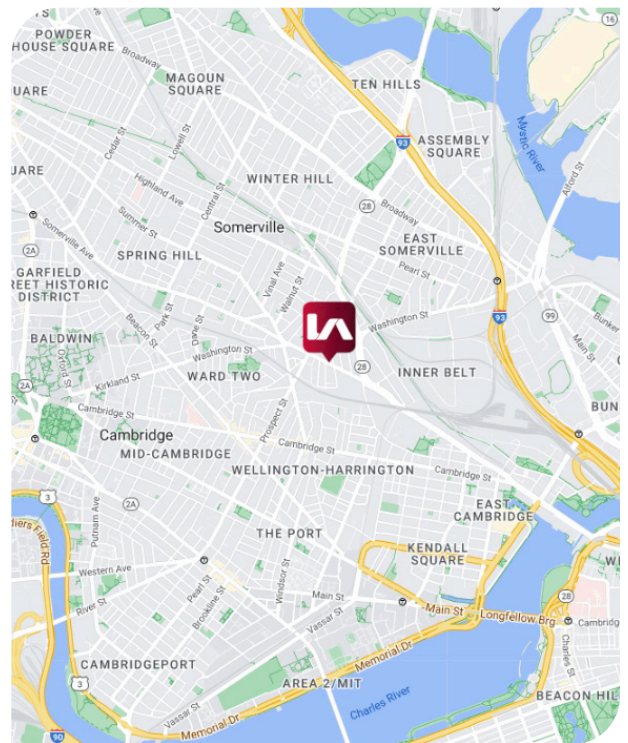
SOMERVILLE, MA 02143



230 Somerville Avenue is located in Union Square, a dynamic and growing community within Somerville, MA which features many neighborhood restaurants, cafés and specialty markets. The property is less than two miles from Route I-93 with easy access to Cambridge and downtown Boston and is in walking distance to the new Union Square MBTA Station (Green Line) and MBTA bus lines.

PROPERTY OVERVIEW

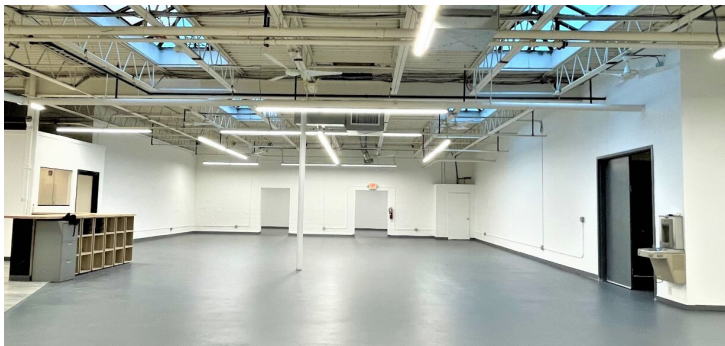
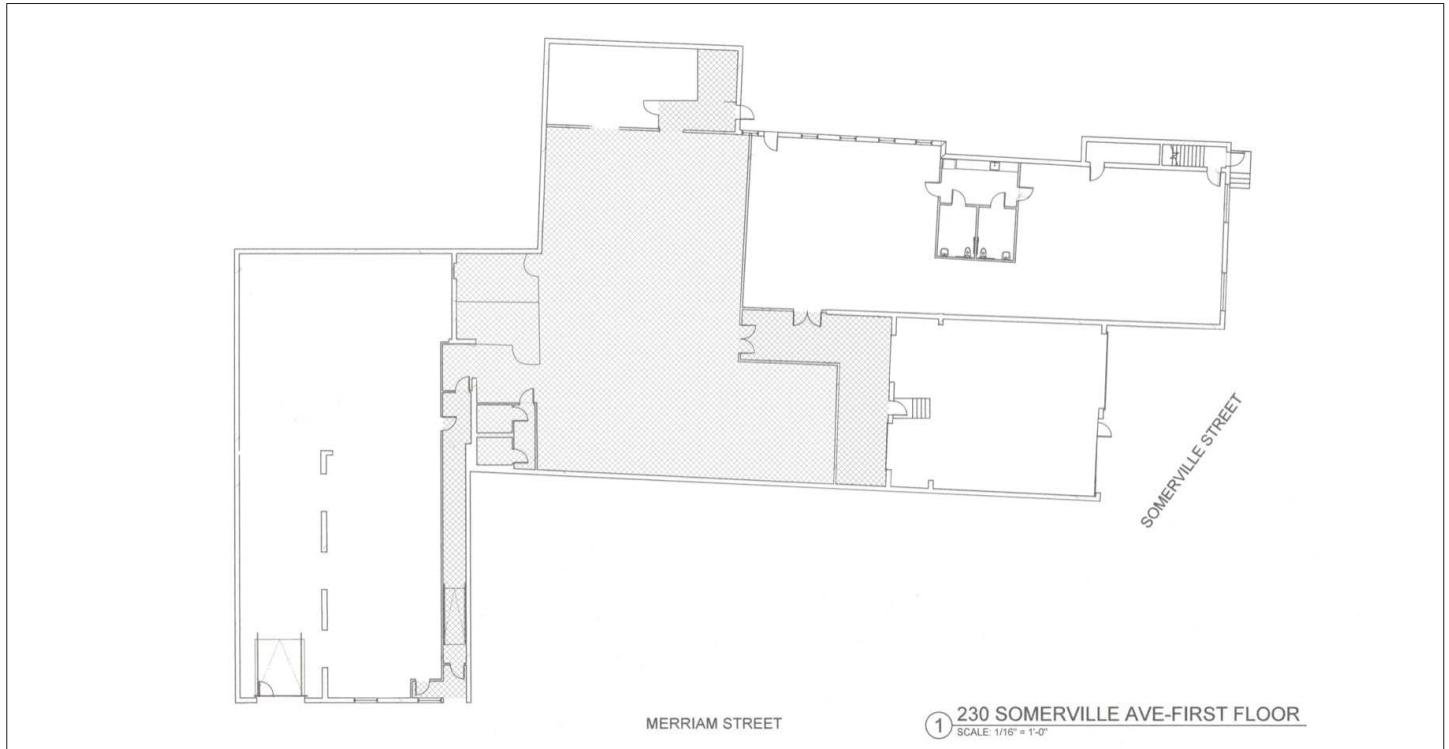
SIZE:	±4,000 to 10,200 SF
TYPE:	Class C Flex/Industrial
CEILING HEIGHT:	12' ceilings
LOADING:	Two (2) loading docks
POWER:	600 amps/ 3 phase
PARKING:	Six (6) on-site spaces; parking for six (6) tandems
ZONING:	BA; Business Commercial



All information furnished regarding property for sale, rental or financing is from sources deemed reliable, but no warranty or representation is made to the accuracy thereof and same is submitted to errors, omissions, change of price, rental or other conditions prior to sale, lease or financing or withdrawal without notice. No liability of any kind is to be imposed on the broker herein.

230 SOMERVILLE AVENUE

SOMERVILLE, MA 02143



STEPHANIE DEERING

Director

sdeering@lee-associates.com

C. 781.608.5964



LEE & ASSOCIATES
COMMERCIAL REAL ESTATE SERVICES

All information furnished regarding property for sale, rental or financing is from sources deemed reliable, but no warranty or representation is made to the accuracy thereof and same is submitted to errors, omissions, change of price, rental or other conditions prior to sale, lease or financing or withdrawal without notice. No liability of any kind is to be imposed on the broker herein.