

# 148 Chambers Street

South Side of Chambers Street between Greenwich Street and W Broadway



WE ARE PLEASED TO OFFER THE FOLLOWING PRIME RETAIL SPACE FOR LEASE:

Space:	Ground Floor: 1,641 sq. ft. Lower Level: 924 sq. ft.
Asking Rent:	Upon Request
Frontage:	18 ft. on Chambers Street
Ceiling Height:	Ground Floor: 12 feet Lower Level: 8 feet
Possession:	Immediate
Neighbors:	Target, Zucker's Bagels, Med Rite, Sweetgreen, Whole Foods, TD Bank, Blue Mercury, Serafina and Starbucks
Comments:	<ul style="list-style-type: none"><li>• Formerly Chambers Street Wines</li><li>• First time available in 15 years</li><li>• Potential for flag signage on existing pole</li></ul>
Institutional Neighbors:	Borough of Manhattan College, Stuyvesant High School, World Trade Center, City Hall, Perelman Performing Arts Center and The Frederick Hotel

Matthew Gorman

212.251.0626

mgorman@aspire-associates.com

Christopher Bruggers

212.644.5015

cbruggers@aspire-associates.com

Exclusive Agent

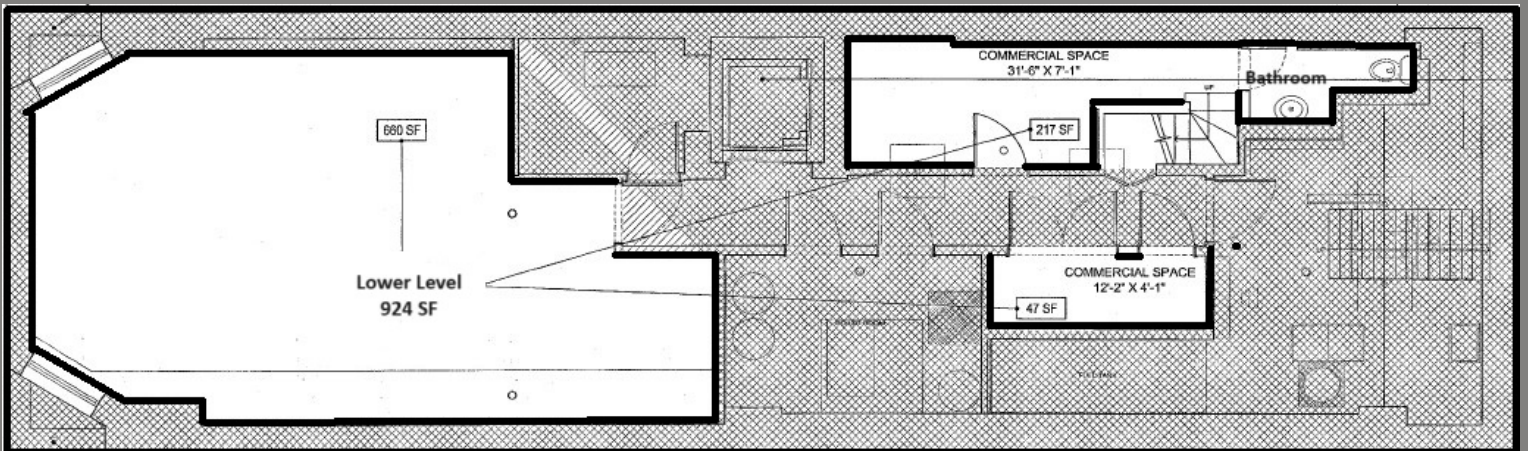
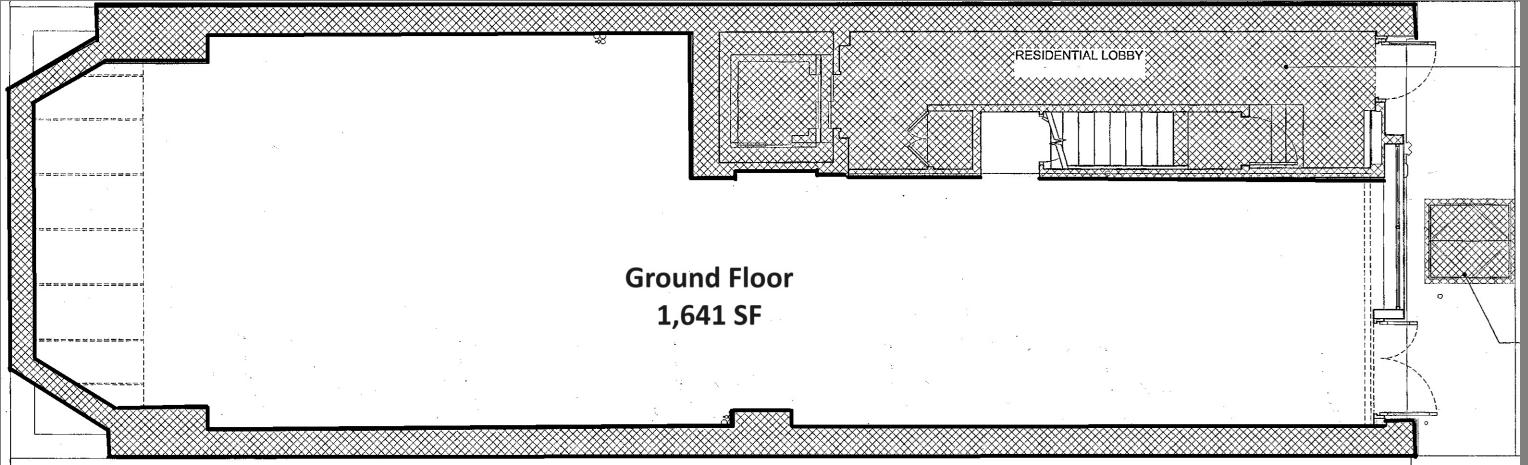
**ASPIRE**  
ASSOCIATES

Aspire Associates LLC - Licensed Real Estate Broker

The information is from sources deemed reliable, however, we have not verified its accuracy, and make no representation about it. It is submitted subject to the possibility of errors, omissions, change of price, rental or other conditions, prior sale, lease or financing, or withdrawal without notice.

# 148 CHAMBERS STREET, NEW YORK, NY

South Side of Chambers Street between Greenwich Street and W Broadway



Matthew Gorman

212.251.0626

mgorman@aspire-associates.com

Christopher Bruggers

212.644.5015

cbruggers@aspire-associates.com

Exclusive Agent

**ASPIRE**  
ASSOCIATES

Aspire Associates LLC - Licensed Real Estate Broker

The information is from sources deemed reliable, however, we have not verified its accuracy, and make no representation about it. It is submitted subject to the possibility of errors, omissions, change of price, rental or other conditions, prior sale, lease or financing, or withdrawal without notice.