

# PROPERTY FEATURES

# FOR SALE & LEASE

## 393 S. SIERRA WAY SAN BERNARDINO, CA 92408



**LOT SIZE:**  
±37,209 sq.ft. (±0.85 Acres)



**PARCEL**  
APN: 0136-221-10



**ZONING**  
Commercial Heavy (CH) per the City of San Bernardino, CA

### PROPERTY HIGHLIGHTS

- Fenced & Secured
- Curb, Gutter, and Sidewalk
- Utilities Available on S. Sierra Way
- Auto & Truck Repair Allowed with C.U.P.
- Great Access to I-215 Freeway From the Mill St. On/Off Ramp
- Centrally Located between the I-10 & 210 Freeways.



KW COMMERCIAL  
3595-1 Inland Empire Blvd. Suite 1250  
Ontario, CA 91764  
909.980.6868

**Rene Ramos, Jr.**  
909.980.6868  
Rene.Ramos@kwcommercial.com  
CalDRE Lic. #01836872

**Jacob B. Bernardy**  
909.935.0935  
Jacob.Bernardy@kwcommercial.com  
CalDRE Lic. #02039512

**Robert Bagley III**  
909.935.0938  
Robert.Bagley@kwcommercial.com  
CalDRE Lic. #02131874

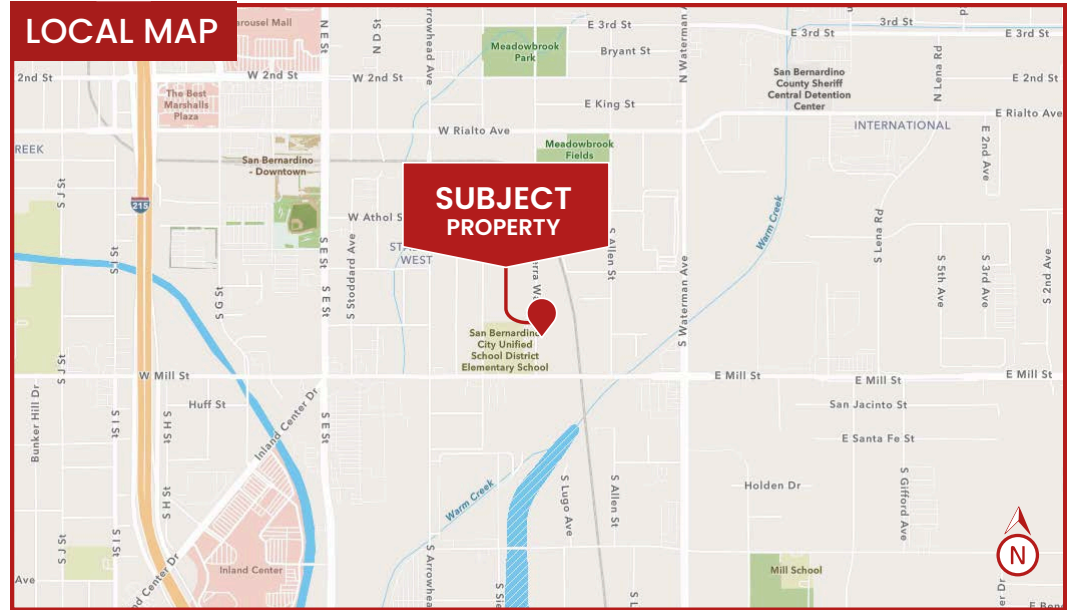
**Daniel W. Richards**  
909.980.6868  
Daniel.richards@kwcommercial.com  
CalDRE Lic. #00803221

WE OBTAINED THE INFORMATION ABOVE FROM SOURCES WE BELIEVE TO BE RELIABLE. HOWEVER, WE HAVE NOT VERIFIED ITS ACCURACY AND MAKE NO GUARANTEE, WARRANTY, OR REPRESENTATION ABOUT IT. IT IS SUBMITTED SUBJECT TO THE POSSIBILITY OF ERRORS, OMISSIONS, CHANGE OF PRICE, RENTAL OR OTHER CONDITIONS, PRIOR SALE, LEASE OR FINANCING, OR WITHDRAWAL WITHOUT NOTICE. WE INCLUDE PROJECTIONS, OPINIONS, ASSUMPTIONS OR ESTIMATES FOR EXAMPLE ONLY, AND THEY MAY NOT REPRESENT CURRENT OR FUTURE PERFORMANCE OF THE PROPERTY. YOU AND YOUR TAX AND LEGAL ADVISORS SHOULD CONDUCT YOUR OWN INVESTIGATION OF THE PROPERTY AND TRANSACTION.

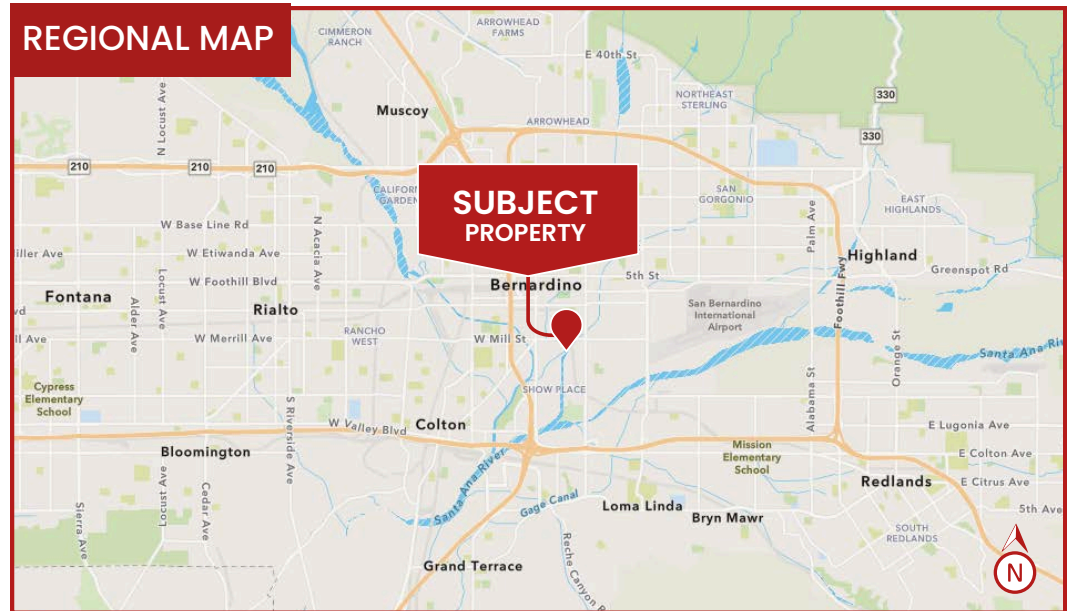
## AERIAL MAP



## LOCAL MAP



## REGIONAL MAP



Rene Ramos, Jr.  
909.980.6868  
Rene.Ramos@kwcommercial.com  
CalDRE Lic. #01836872

Jacob B. Bernardy  
909.935.0935  
Jacob.Bernardy@kwcommercial.com  
CalDRE Lic. #02039512

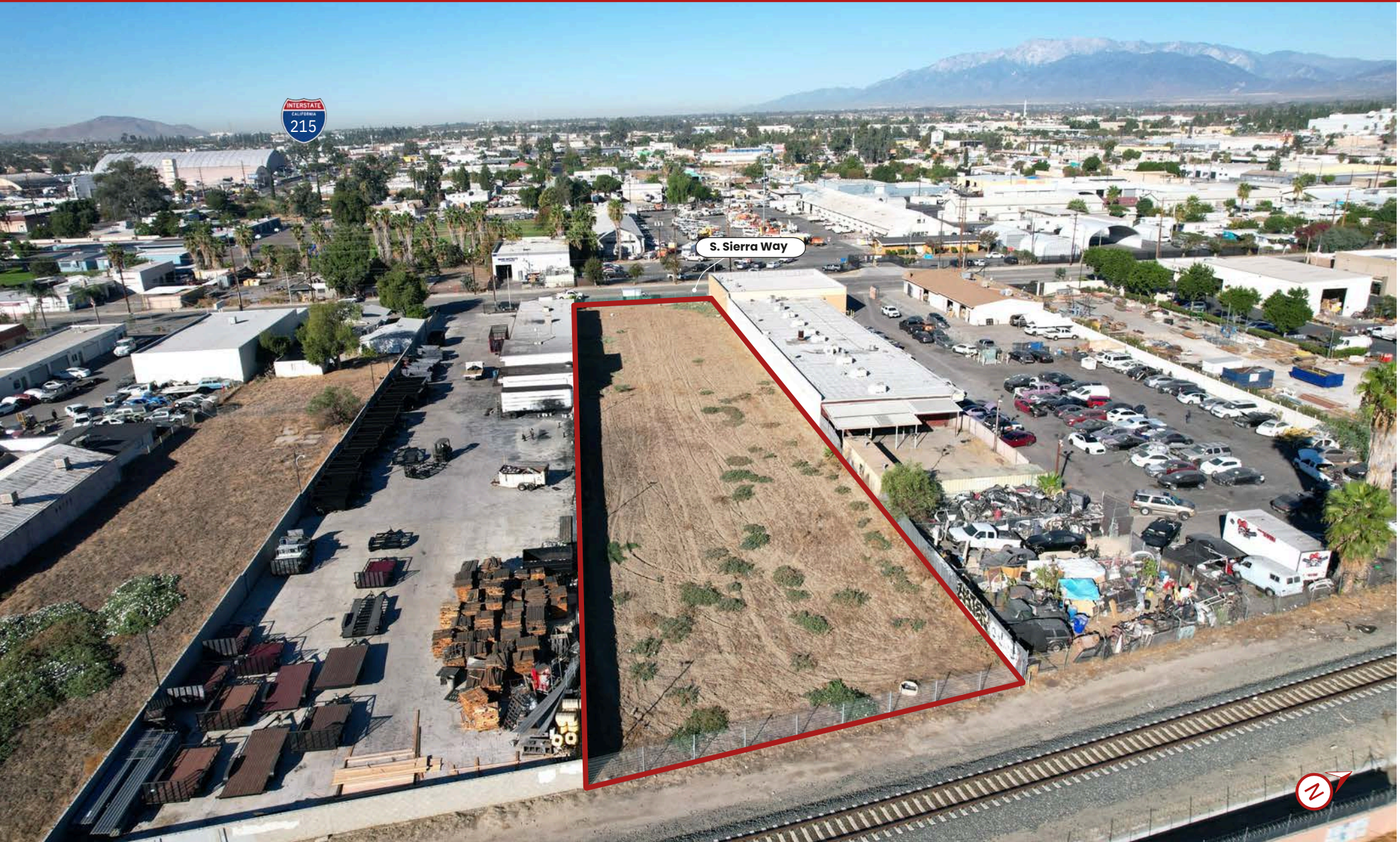
Robert D. Bagley III  
909.935.0938  
Robert.Bagley@kwcommercial.com  
CalDRE Lic. #02131874

Daniel W. Richards  
909.980.6868  
Daniel.Richards@kwcommercial.com  
CalDRE Lic. #00803221



**INLAND  
EMPIRE**

**CAL DRE # 02120868**



Rene Ramos, Jr.  
909.980.6868  
Rene.Ramos@kwcommercial.com  
CalDRE Lic. #01836872

Jacob B. Bernardy  
909.935.0935  
Jacob.Bernardy@kwcommercial.com  
CalDRE Lic. #02039512

Robert D. Bagley III  
909.935.0938  
Robert.Bagley@kwcommercial.com  
CalDRE Lic. #02131874

Daniel W. Richards  
909.980.6868  
Daniel.richards@kwcommercial.com  
CalDRE Lic. #00803221



INLAND  
EMPIRE

CAL DRE # 02120868



Rene Ramos, Jr.  
909.980.6868  
Rene.Ramos@kwcommercial.com  
CalDRE Lic. #01836872

Jacob B. Bernardy  
909.935.0935  
Jacob.Bernardy@kwcommercial.com  
CalDRE Lic. #02039512

Robert D. Bagley III  
909.935.0938  
Robert.Bagley@kwcommercial.com  
CalDRE Lic. #02131874

Daniel W. Richards  
909.980.6868  
Daniel.richards@kwcommercial.com  
CalDRE Lic. #00803221



INLAND  
EMPIRE

CAL DRE # 02120868