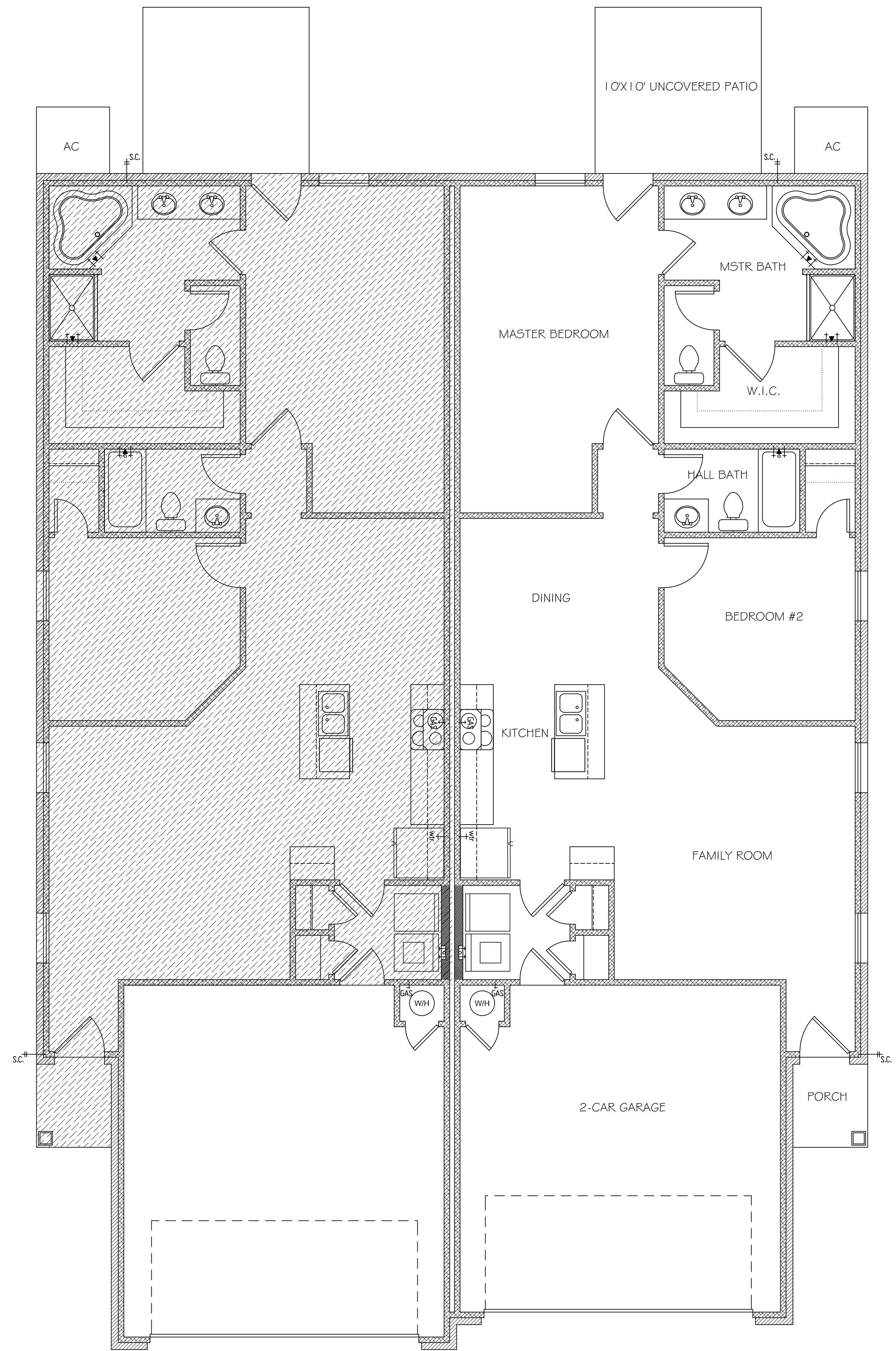


PATIO HOME PLAN 1 (3 BEDROOMS, 2 BATHROOMS)

EACH UNIT VENEER: 1,246 SQ FT., TOTAL COMBINED VENEER: 2,492 SQ FT.



PATIO HOME PLAN 2 (2 BEDROOMS W/LARGER MASTER BATH)

EACH UNIT VENEER: 1,246 SQ FT., TOTAL COMBINED VENEER: 2,492 SQ FT.

LANDMARK HOMES  
NEW PATIO HOME PLANS

DATE: 06/14/2019  
SCALE: AS SHOWN

Landmark Fine Homes LP hereby warrants that the information contained herein is true and correct to the best of our knowledge and belief. This information is provided for informational purposes only and does not constitute an offer of any financial product. Please consult your financial advisor for more information. © COPYRIGHT 2015 LANDMARK FINE HOMES LP. These plans are provided for information only and are not to be used for construction of any other structure without written consent from Landmark Fine Homes LP.

200 WASHINGTON  
NORFOLK, VA 23509  
info@landmarkhomes.com

**Landmark**  
FINE HOMES LP

PLANS  
**1&2**