
9022

HERITAGE PARKWAY

Woodridge, IL

94,233 SF
2-Story Office Headquarters
for Sale or Lease

9022

HERITAGE PARKWAY

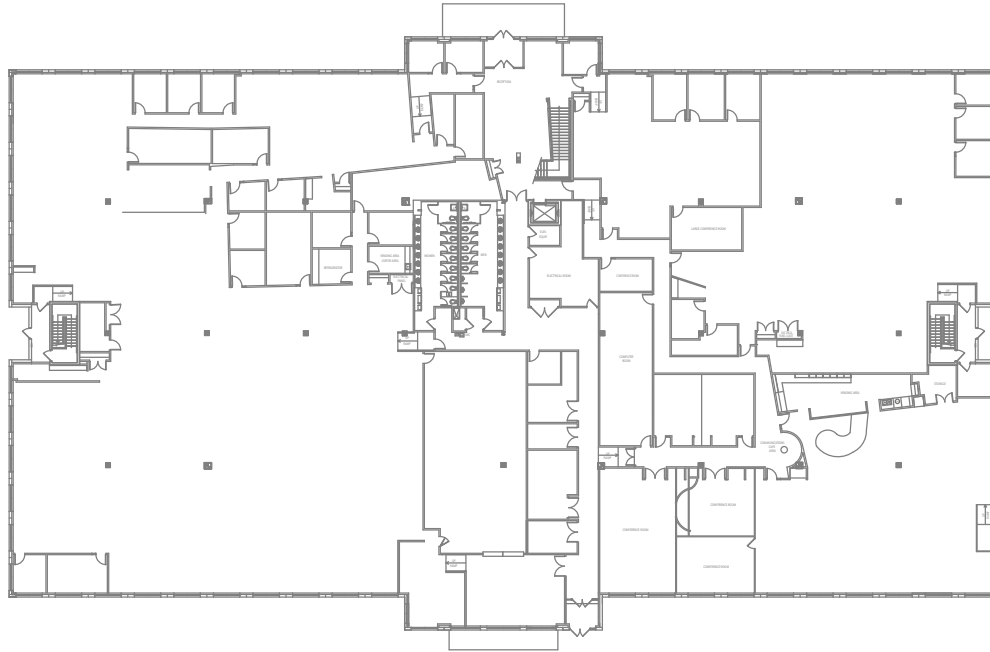
Woodridge, IL



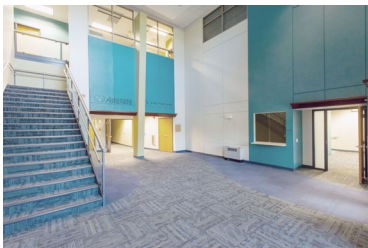
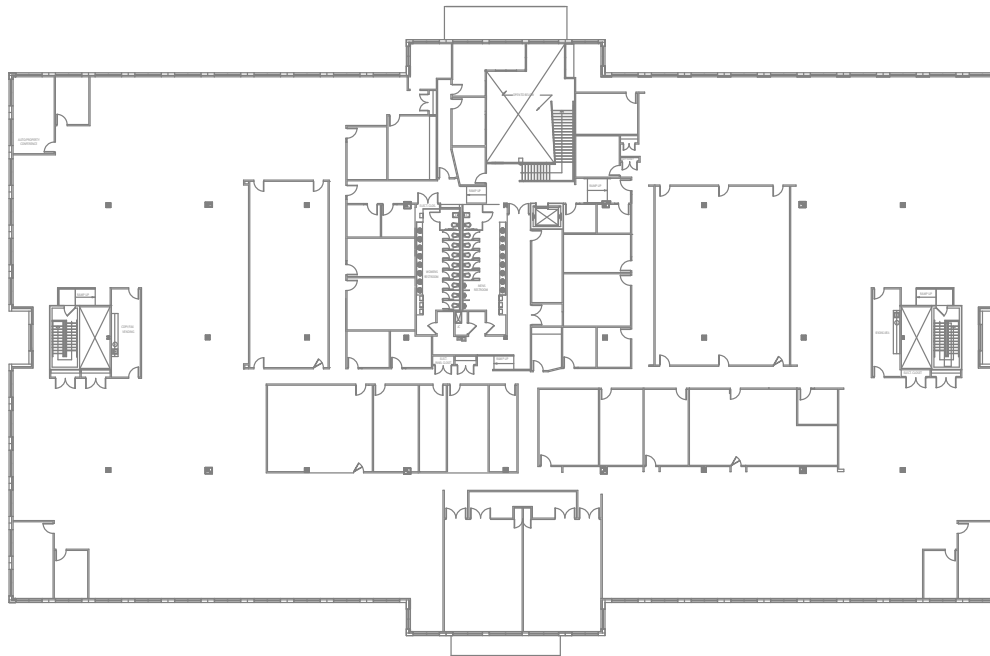
94,233 SF 2-STORY OFFICE HEADQUARTERS /
8.05 ACRE SITE / REDEVELOPMENT OPPORTUNITY



FIRST FLOOR



SECOND FLOOR



Large floorplans with open stairwell

*Abundant parking
(5.7 / 1,000 SF parking ratio)*

Prominent monument signage

*Building top signage available with
pronounced visibility from I-55
(traffic counts 150,000+ VPD)*

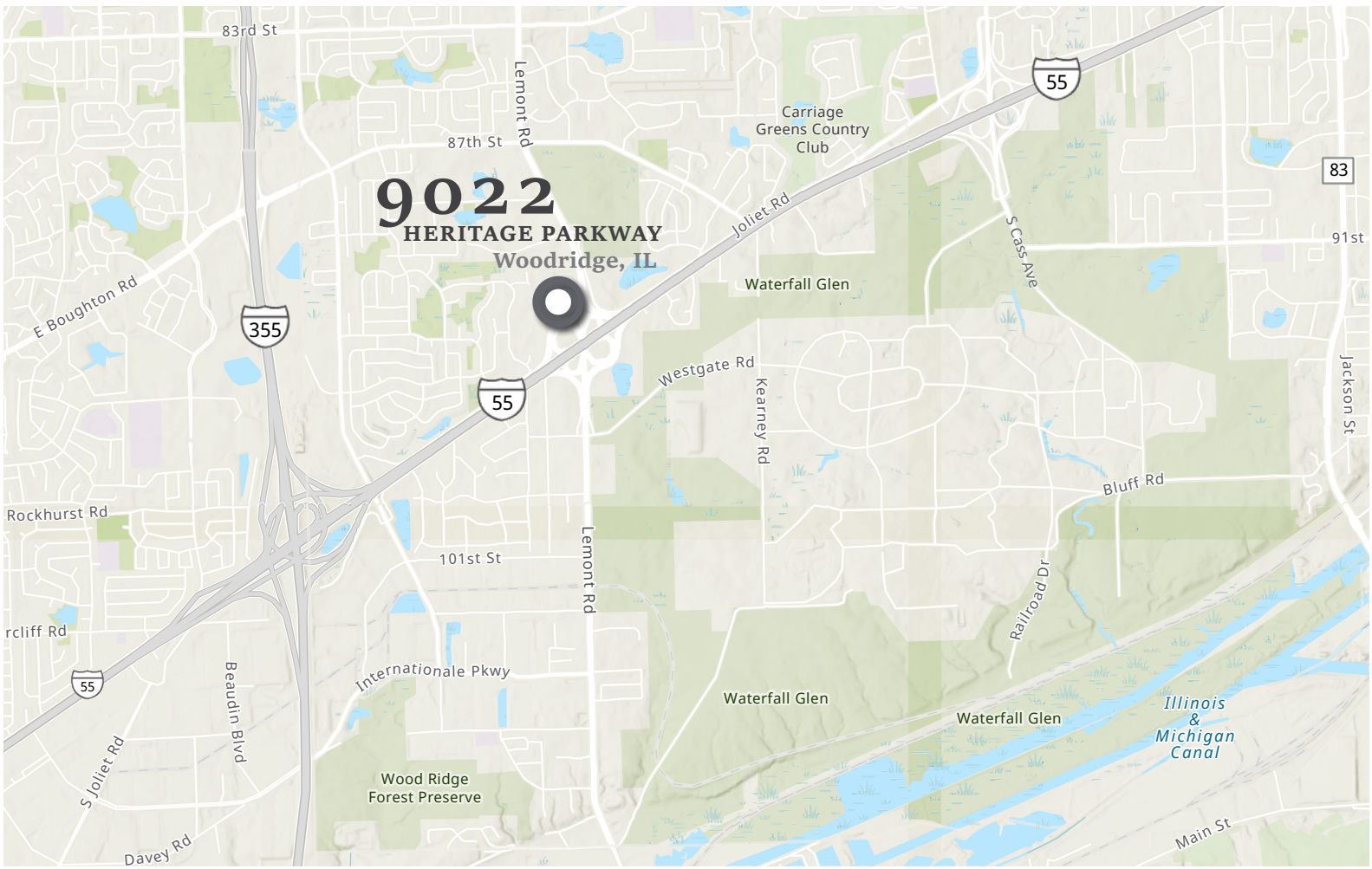
4-way interchange @ Lemont Road & I-55

Low DuPage County taxes

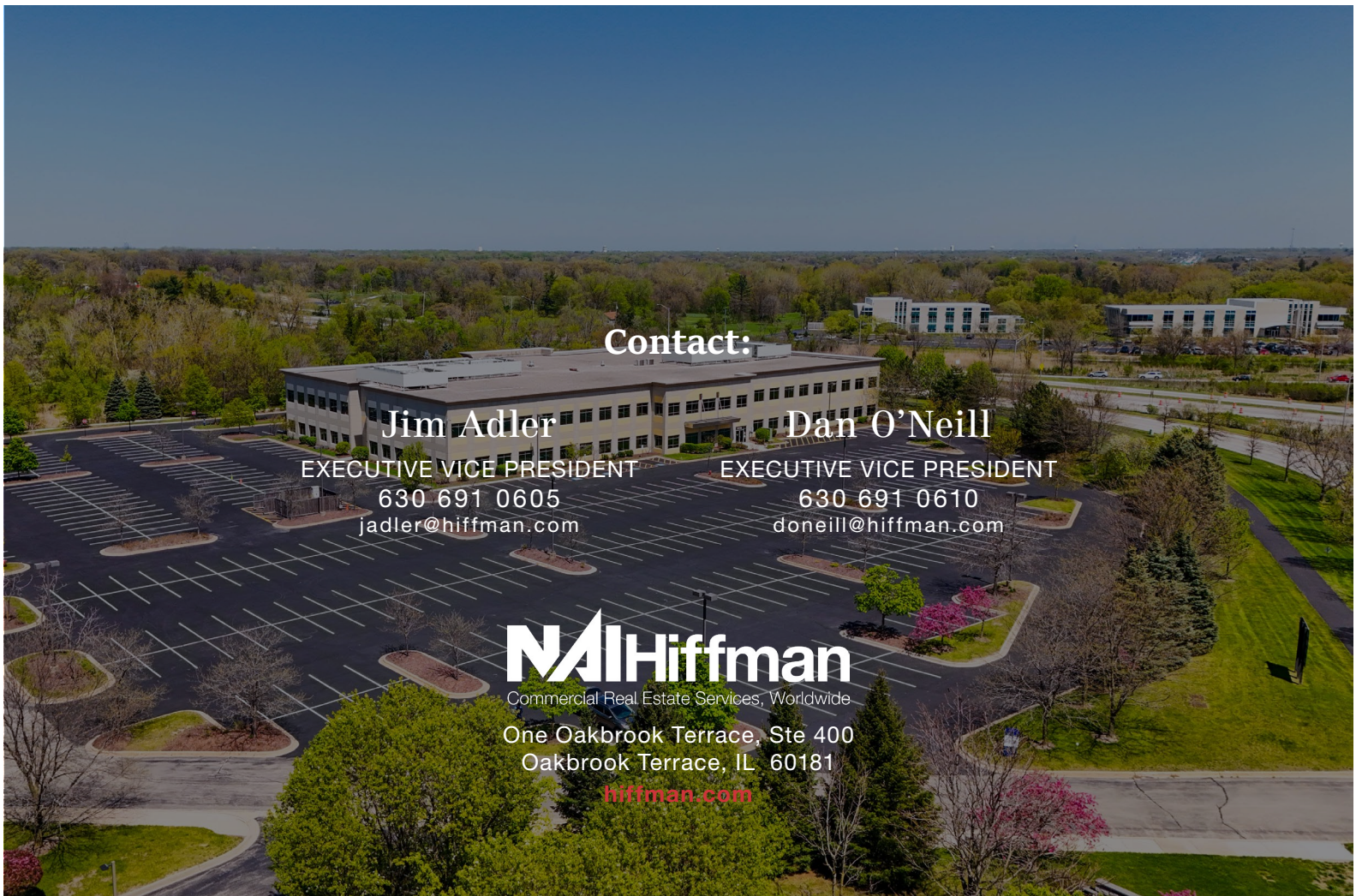
*Less than 25 miles to O'Hare &
Midway airports*

Across from 2500 acre Waterfall Glen Preserve





9022
HERITAGE PARKWAY
Woodridge, IL



Contact:

Jim Adler
EXECUTIVE VICE PRESIDENT
630 691 0605
jadler@hiffman.com

Dan O'Neill
EXECUTIVE VICE PRESIDENT
630 691 0610
doneill@hiffman.com



Commercial Real Estate Services, Worldwide

One Oakbrook Terrace, Ste 400
Oakbrook Terrace, IL 60181

hiffman.com