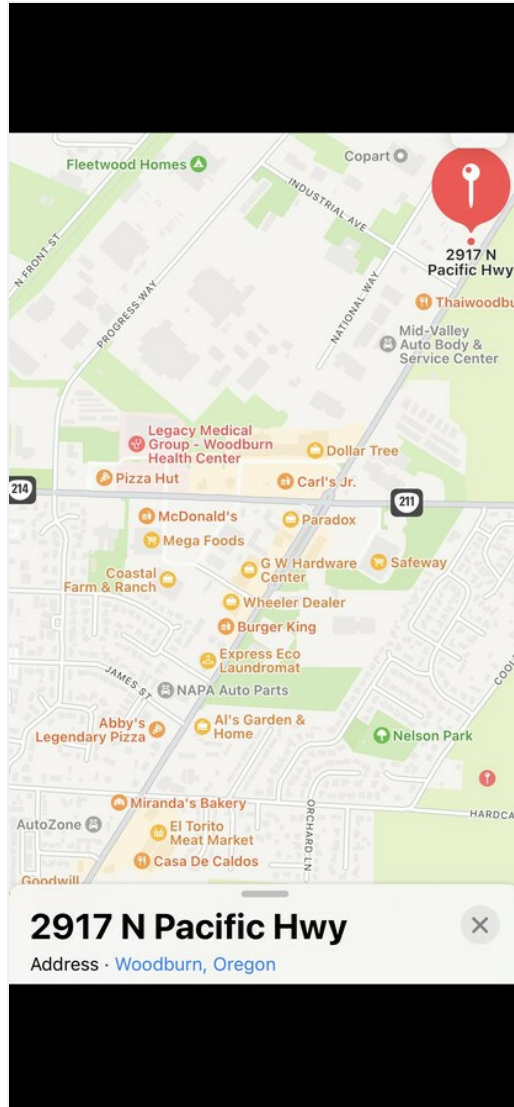


71,000sf Corner Outdoor Sales Lot ...

2917 N Pacific Hwy, Woodburn, OR 97071

Presented by
R.A. Baranzano Company



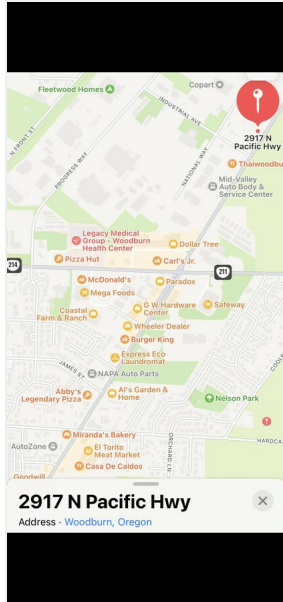
Price: Upon Request

Highly Visible 71,000sf Corner Outdoor Sales Lot near Largest Mid-Valley Community Shopping Retail Intersection(APPROXIMATELY 850,000 SF OF RETAIL). Many recent Inquiries. 4 Foot Rock Base. Landscaped with 1,350 sf office. Ideal for Car Lot, Equipment Sales and Display, Equipment Rental, Car Rental and, Contractors Office and, Truck Transfer. Signage, Landscaped, Lighting and, about 4 feet of Rock Base. 1.64 Acres. Very Attractive. Also, Gas Stations, Vehicle Servicing, Car Wash, Restaurants and Food Services Permitted.

2917 N Pacific Highway, Woodburn, OR 97071

71,000sf Corner Outdoor Sales Lot with Office

2917 N Pacific Hwy, Woodburn, OR 97071



Rich Baranzano

oregonrealestate@cs.com

(503) 330-8100

R.A. Baranzano Company

4075 N Interstate Ave

Portland, OR 97227

Adjacent to the Mid Valley Intersection, anchored by Safeway, Coastal Hardware, Bi-Mart, Mega Foods, Dollar Tree, Aaron's, Big Five Sporting Goods

1.67 Acre Corner Outdoor Sales Lot, Extensive Rock Base, Roadway Improved, Landscaped with 1,350 SF Office

Adjacent to Largest Mid-Valley Retail Intersection, Approximately 850,000 SF Leased

Intersection also Populated by Chase Bank, Wells Fargo, Columbia Bank, Oregon State Credit Union, McDonalds, Starbucks, Shari's, Carl's Jr

Highly Visible Corner also Zoned for Restaurant, Gas Station, Convenience Store, Car Wash

71,000sf Corner Outdoor Sales Lot with Office

2917 N Pacific Hwy, Woodburn, OR 97071

2917 N Pacific Hwy, Woodburn, OR 97071



Woodburn Site Aerial

Listing space

1st Floor Ste 1

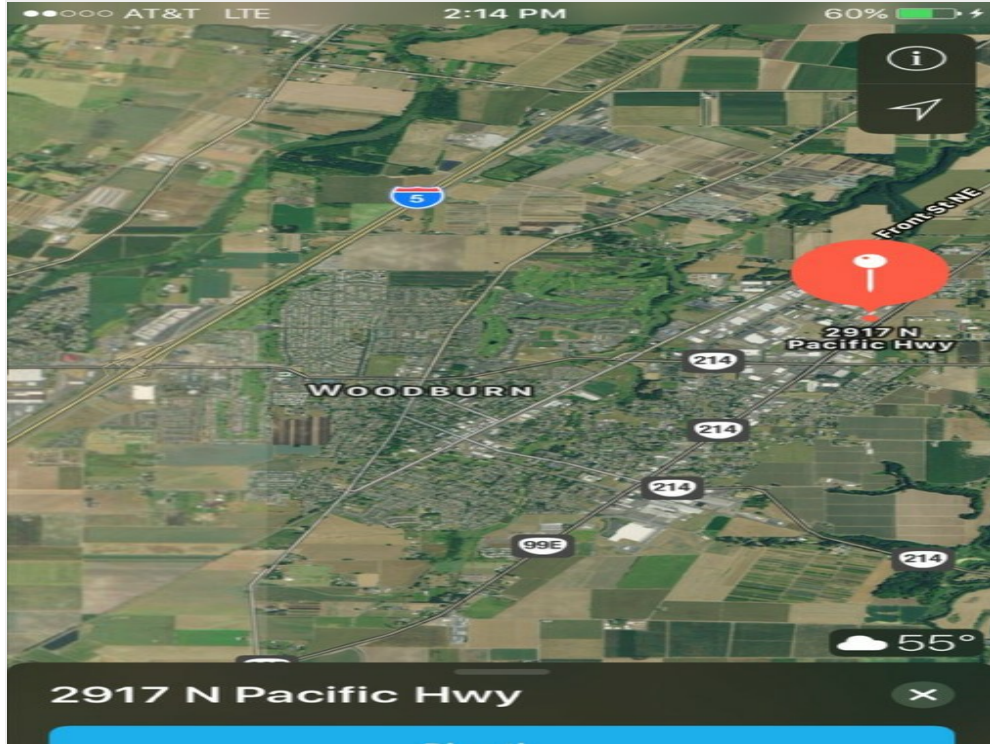
Space Available	1,450 SF
Rental Rate	Upon Request
Date Available	Now
Service Type	Negotiable
Built Out As	Car Dealership
Space Type	Relet
Space Use	Retail
Lease Term	Negotiable

Corner Outdoor Sales Lot

71,000sf Corner Outdoor Sales Lot with Office

2917 N Pacific Hwy, Woodburn, OR 97071

Property Photos



Woodburn Regional Aerial



4 Foot Rock Base

71,000sf Corner Outdoor Sales Lot with Office

2917 N Pacific Hwy, Woodburn, OR 97071

Property Photos



Flexible Outdoor Display



Interstate-5 Access from Major Highway 211 Interchange

71,000sf Corner Outdoor Sales Lot with Office

2917 N Pacific Hwy, Woodburn, OR 97071

Property Photos



Corner with 333 foot Pacific Highway Frontage



Maximum Visibility

71,000sf Corner Outdoor Sales Lot with Office

2917 N Pacific Hwy, Woodburn, OR 97071

Property Photos



Signage in Place



THE Major Mid-Valley Retail Intersection

71,000sf Corner Outdoor Sales Lot with Office

2917 N Pacific Hwy, Woodburn, OR 97071

Property Photos



Beautiful Sequoias Line East Side of Pacific Highway



1,500sf Office with 4 Individuals, Large Reception, 4 Full Baths, Full Sized Kitchen

71,000sf Corner Outdoor Sales Lot with Office

2917 N Pacific Hwy, Woodburn, OR 97071

Location

