

## RENAISSANCE COMMONS 333 FORSGATE DRIVE, JAMESBURG NJ



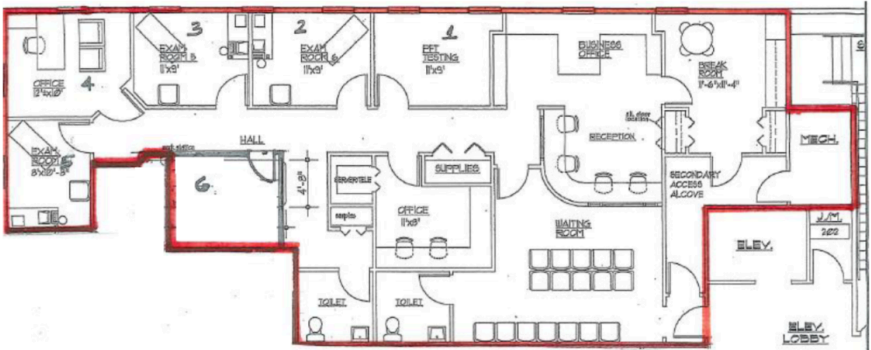
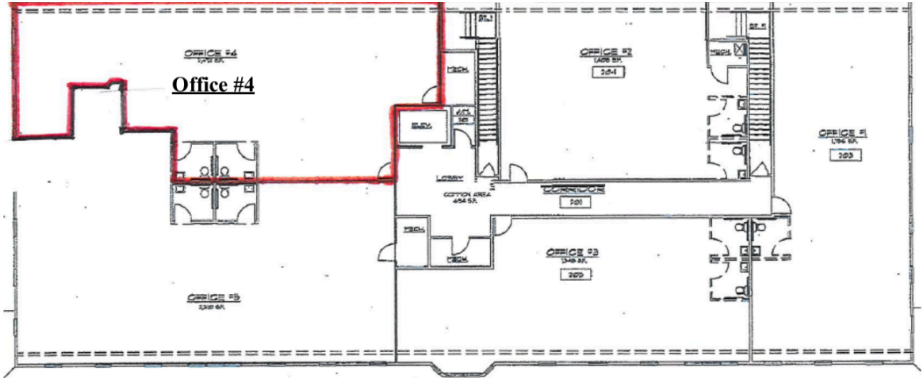
### ABOUT THE PROPERTY

Exceptional Tenant Signage, highly visible on well travelled Forsgate Drive, situated between Monroe and Jamesburg. One mile from Exit 8A on the NJ Turnpike.

- 2,513 RSF bright medical/office corner suite
- Immaculate and well maintained, mixed-use upscale property, with high foot traffic
- Four medical/office tenants, six retail tenants
- Average drive-by traffic 12,000+ cars per day

Lia Papismedov | m: 917.673.9111 | e: [lia@alignhre.com](mailto:lia@alignhre.com)

## FLOOR PLAN - 2,513 RSF



Lia Papismedov | m: 917.673.9111 | e: [lia@alignhre.com](mailto:lia@alignhre.com)

## EXISTING TENANT MIX

### RETAIL

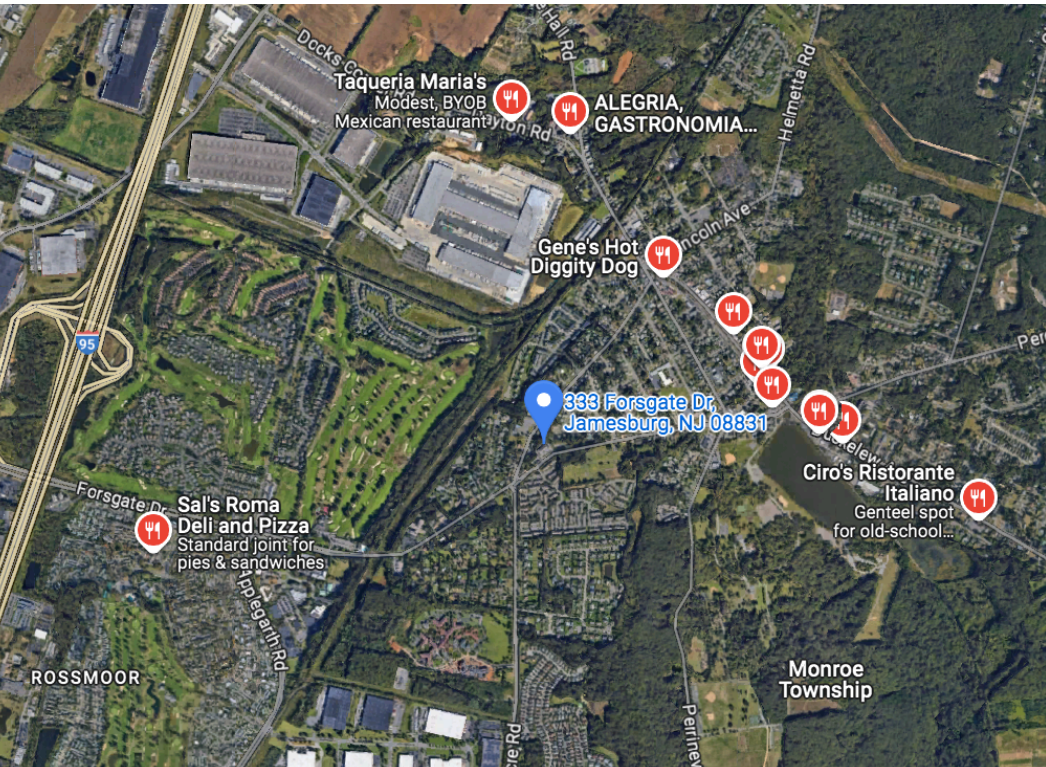
- Salon VIP Day Spa
- Point of Care Pharmacy
- Jamesburg Family Eye Care
- Audibel Hearing Center

### OFFICE/MEDICAL

- Central Jersey Family Medical
- Gentle Smiles
- Quest Diagnostics
- Monroe Food & Ankle Care

Lia Papismedov | m: 917.673.9111 | e: [lia@alignhre.com](mailto:lia@alignhre.com)

## LOCATION



Lia Papismedov | m: 917.673.9111 | e: [lia@alignhre.com](mailto:lia@alignhre.com)