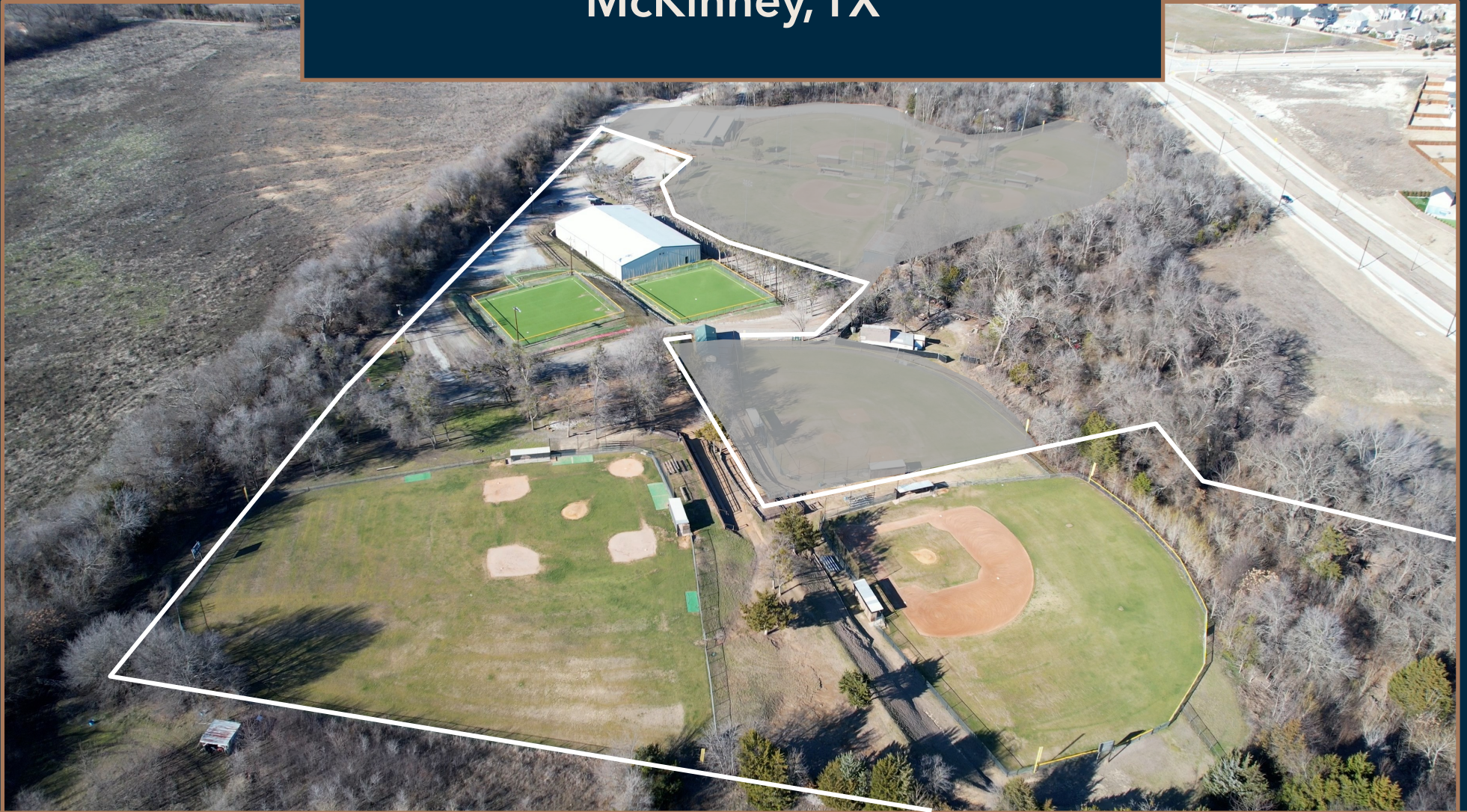


Texas Baseball Group McKinney, TX



TURNKEY PROPERTIES

ELEVATED
PROPERTIES

ESTABLISHED 2018

Office – 469.238.0310

Chad Cunningham – 214-802-4927

office@elevatedpmtx.com

ccunningham@elevatedpmtx.com

elevatedpropertystx.com

The information contained herein was obtained from sources deemed reliable; however, Elevated Property Management, LLC dba Elevated Properties makes no guarantees, warranties, or representations as to the accuracy or completeness thereof. The presentation of this property is subject to errors, omissions, change of price, prior sale or lease, or withdrawal without notice.

Property

Texas Baseball Group – McKinney

TURNKEY PROPERTIES

ELEVATED
PROPERTIES

ESTABLISHED 2018



Property

Texas Baseball Group – McKinney

TURNKEY PROPERTIES

ELEVATED
PROPERTIES

ESTABLISHED 2018



10.1 Acres



Property

Texas Baseball Group – McKinney

TURNKEY PROPERTIES

ELEVATED

PROPERTIES

ESTABLISHED 2018



Indoor cages & offices

2 infield practice fields

[Click here](#)
[For survey](#)



Property

Texas Baseball Group – McKinney

TURNKEY PROPERTIES
ELEVATED
PROPERTIES
ESTABLISHED 2018



[Click here](#)
[For survey](#)

2 baseball fields



Location

Texas Baseball Group – McKinney

TURNKEY PROPERTIES

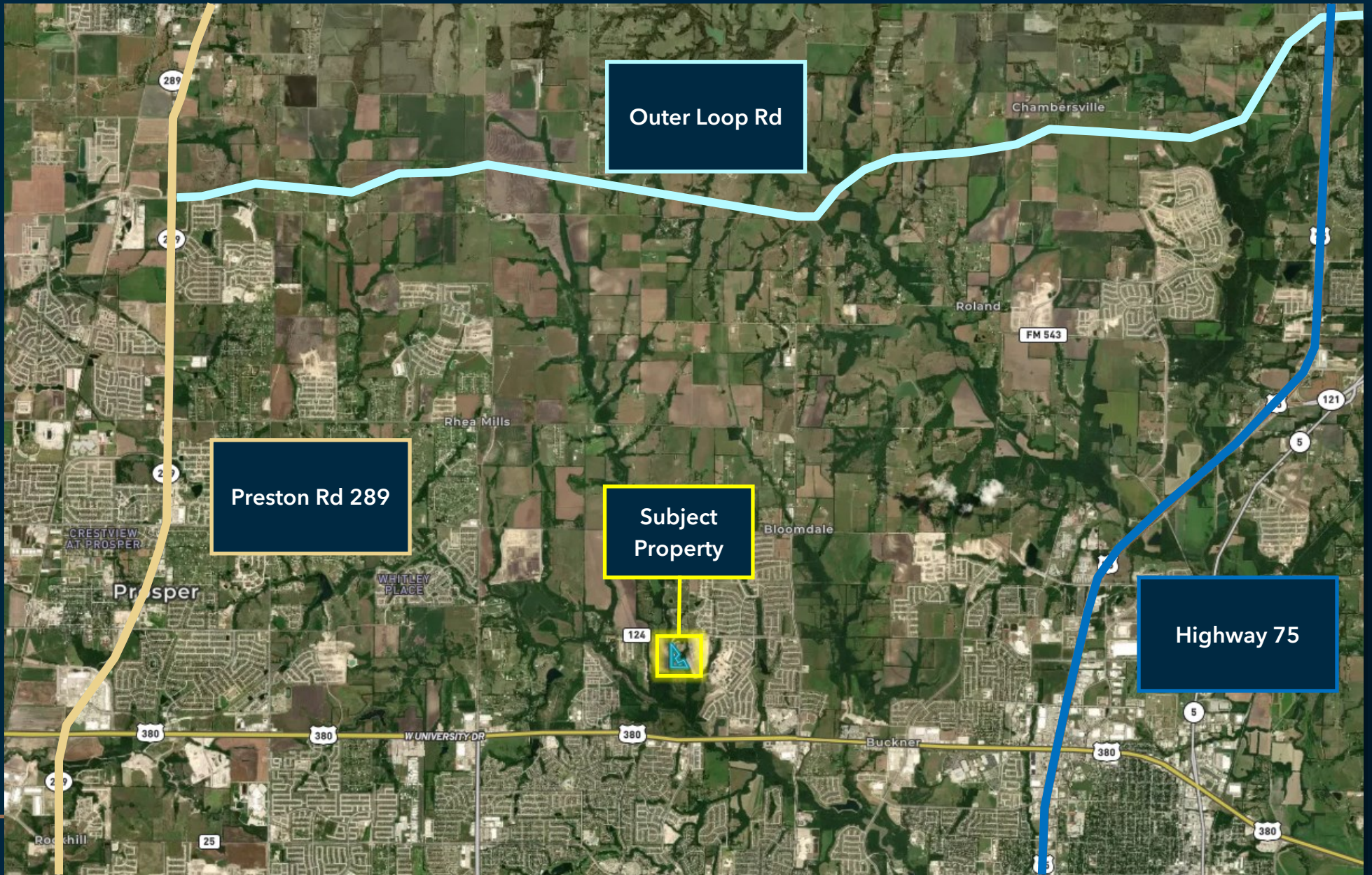
ELEVATED PROPERTIES

ESTABLISHED 2018



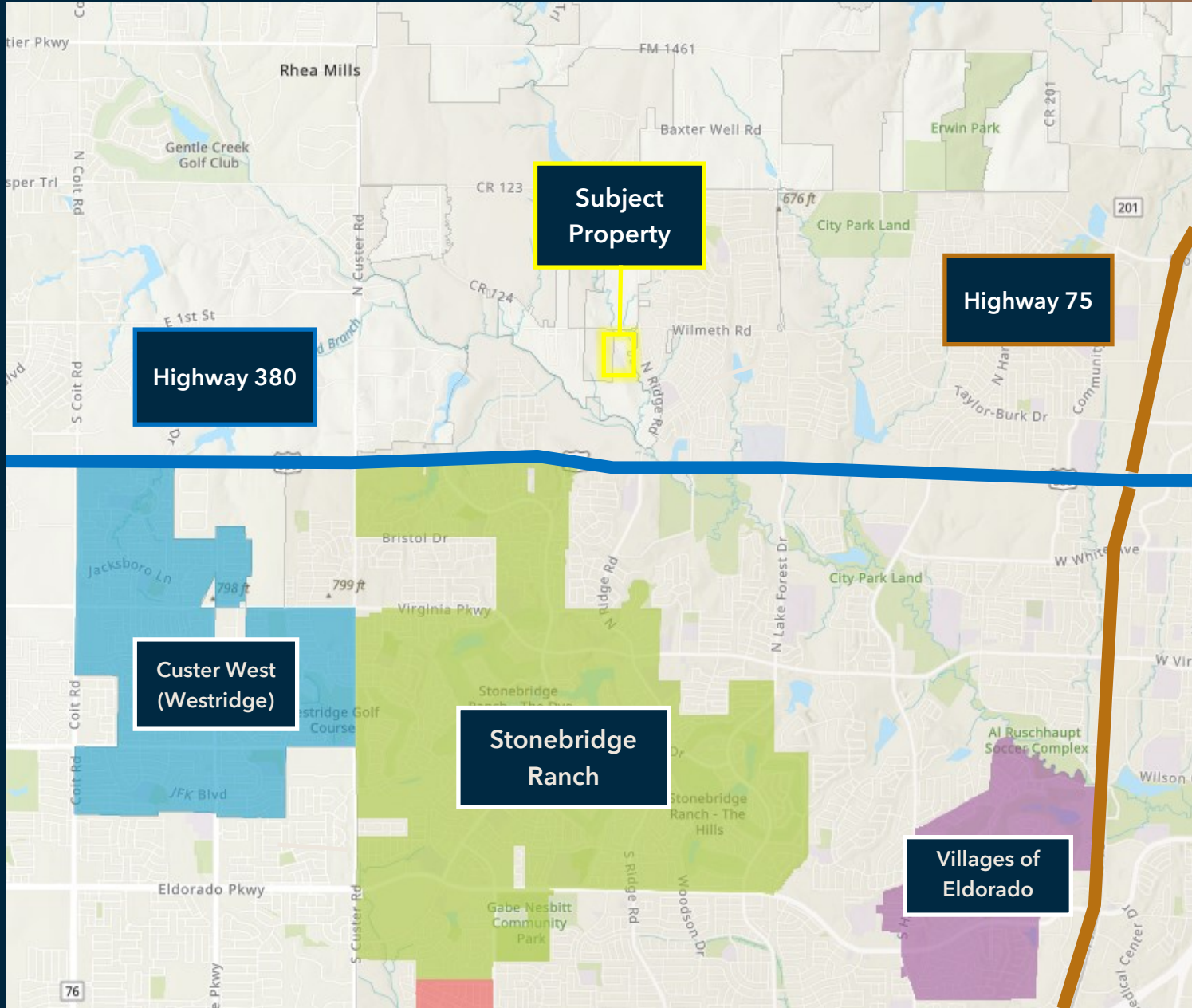
Location

Texas Baseball Group – McKinney



Nearby Developments

Texas Baseball Group – McKinney



Nearby Subdivisions

Texas Baseball Group – McKinney



Timberridge

Wilmeth Ridge

Robinson Ridge

Tucker Hill

Auburn Hills



City Limits/ETJ

Texas Baseball Group – McKinney

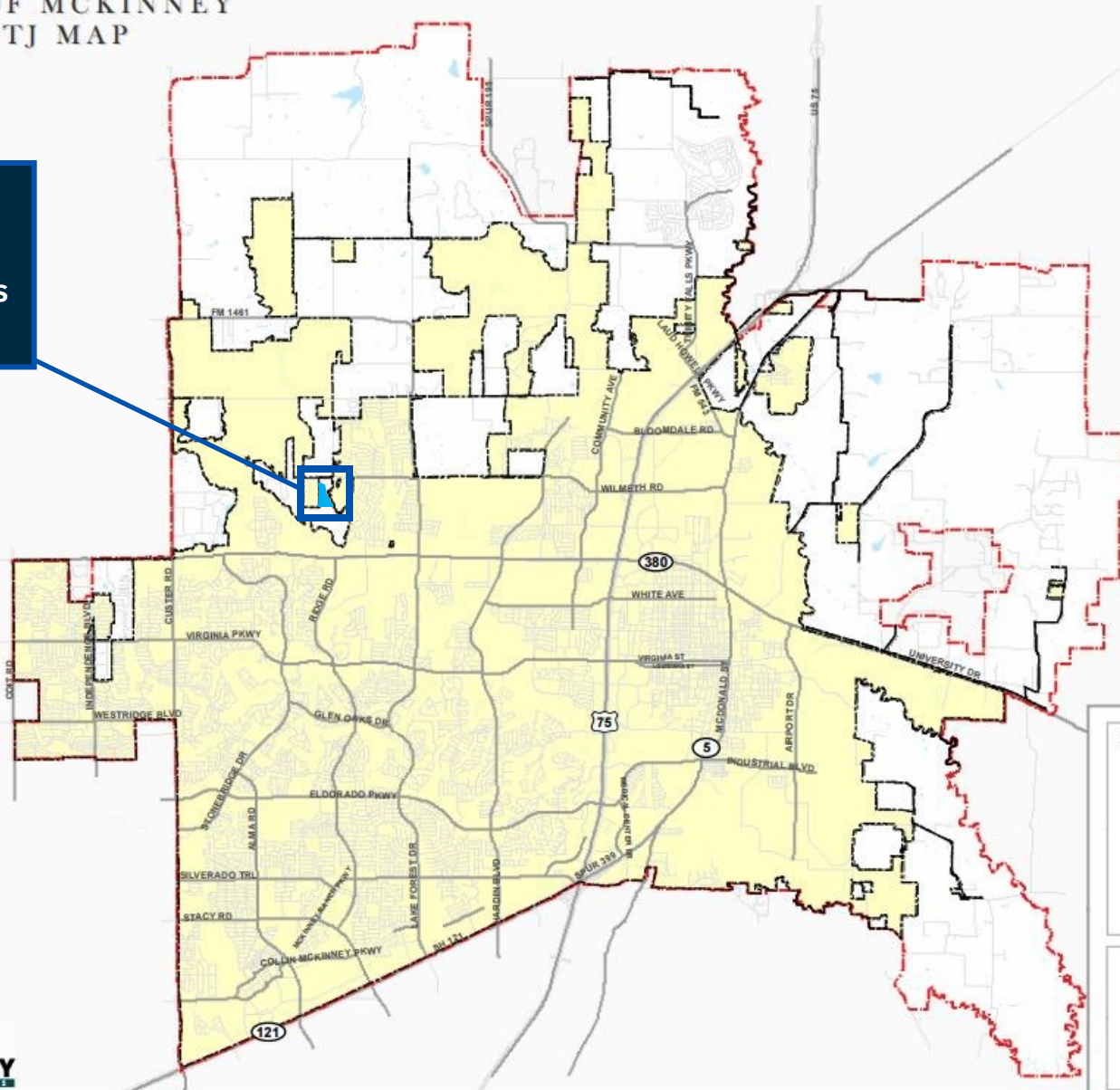
TURNKEY PROPERTIES

ELEVATED PROPERTIES

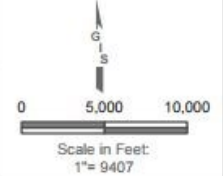
ESTABLISHED 2018

CITY OF MCKINNEY ETJ MAP

Within ETJ,
Outside City Limits



Source: City of McKinney GIS
Date: October 2016



ETJ Map

- Existing E.T.J.
- City Limits



Agent Info

Texas Baseball Group – McKinney



For additional info, contact:

Chad Cunningham

214-802-4927

ccunningham@elevatedpmtx.com

[Click here for Information About Brokerage Services!](#)

