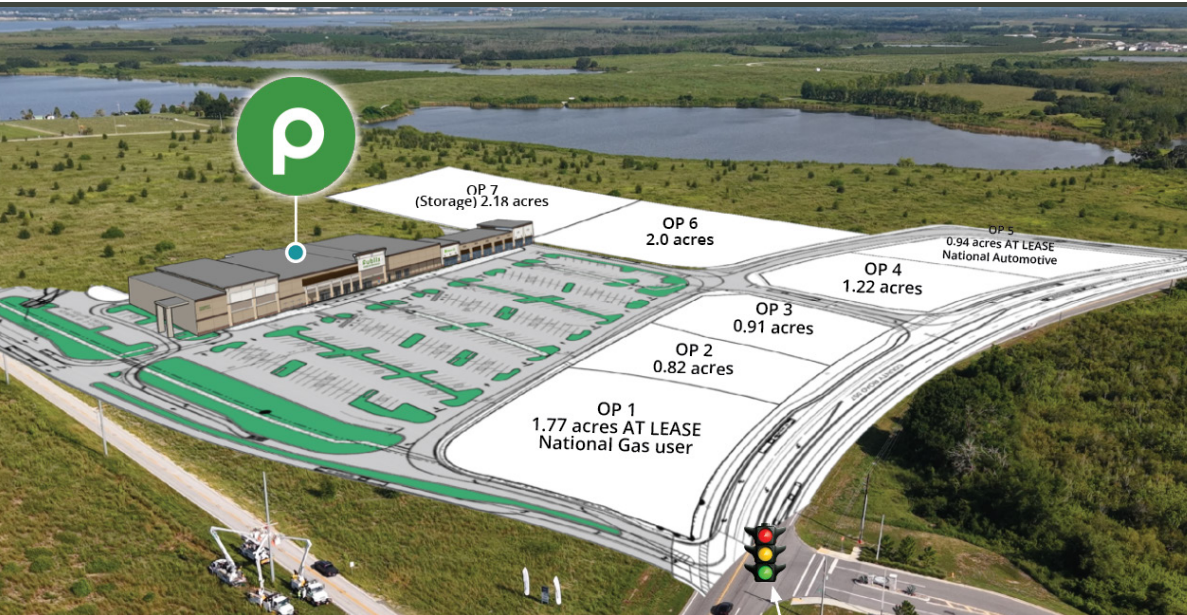


LAKE ALFRED SQUARE

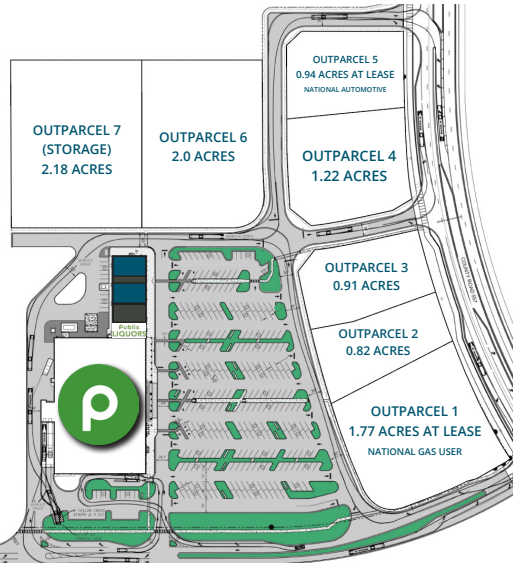
Co Rd 557 & Old Lake Alfred Rd | Lake Alfred, FL 33850

FOR LEASE



PROPERTY OVERVIEW

- » **AVAILABLE:** Space starting from 1,400 SF | 7,000 SF of total new retail space
- » **Delivery Timing:** ~Q4 2026
- » Anchored by Publix
- » Surrounded by new and actively selling lakefront residential communities
- » Located near a variety of 55+ communities, including private neighborhoods, resort-style living, and land lease options



DEMOGRAPHICS

	3 Mile	5 Mile	Polk County
Population	14,331	59,943	847,726
Households	5,324	23,042	321,650
Avg. HH Income	\$95,480	\$96,425	\$96,865

TRAFFIC COUNTS AADT

Co Rd 557	27,497 AADT
-----------	-------------



LICENSED REAL ESTATE BROKER
 BROKER OF RECORD: DARRON KATTAN, #BK3256503
 DARRON.KATTAN@FRANKLINST.COM

ALEX WRIGHT
 MANAGING DIRECTOR

☎ 813.682.6135
 ✉ Alex.Wright@FranklinSt.com

ZACK MCNAMARA
 SENIOR DIRECTOR

☎ 407.458.5409
 ✉ Zack.McNamara@FranklinSt.com



LAKE ALFRED SQUARE

Co Rd 557 & Old Lake Alfred Rd | Lake Alfred, FL 33850

FOR LEASE



LICENSED REAL ESTATE BROKER
BROKER OF RECORD: DARRON KATTAN, #BK3256503
DARRON.KATTAN@FRANKLINST.COM

ALEX WRIGHT
MANAGING DIRECTOR

☎ 813.682.6135
✉ Alex.Wright@FranklinSt.com

ZACK MCNAMARA
SENIOR DIRECTOR

☎ 407.458.5409
✉ Zack.McNamara@FranklinSt.com



TENANT	SF
AVAILABLE	5,850 (DEMISABLE)
PUBLIX LIQUORS	2,100
AVALON NAILS	2,800
DOMINO'S	1,150





