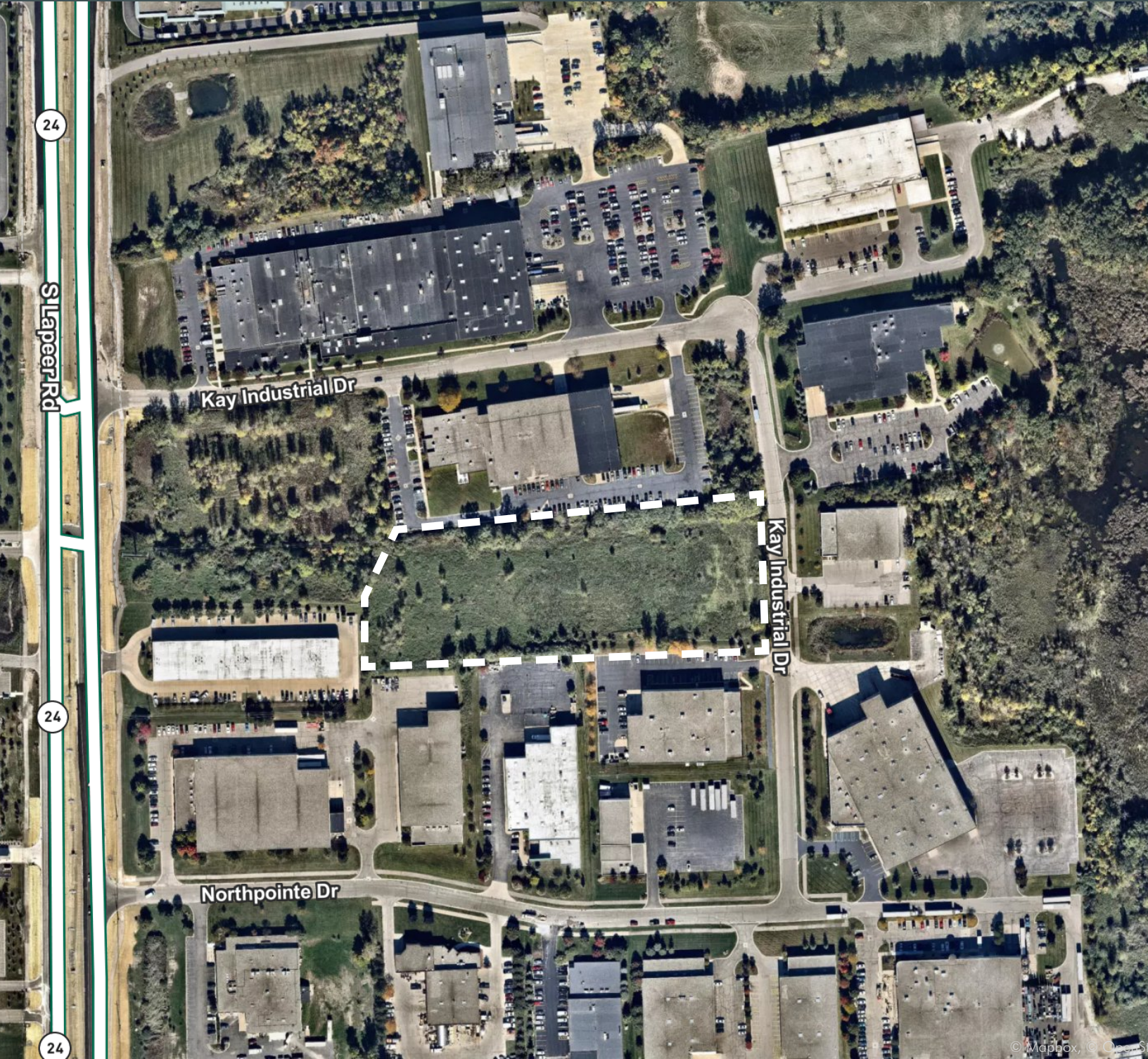


175 Kay Industrial Drive

66,955 – 72,955 SF / 4.39 AC



Aerial



© Mapbox, © OpenStreetMap contributors

Property Features

66,955 –
72,955

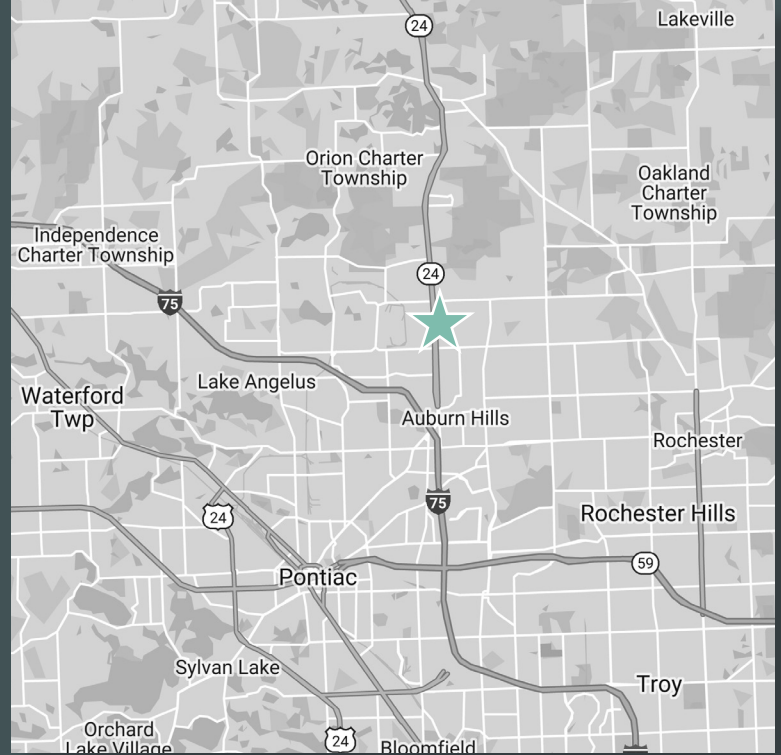
Square Footage

Oakland

County

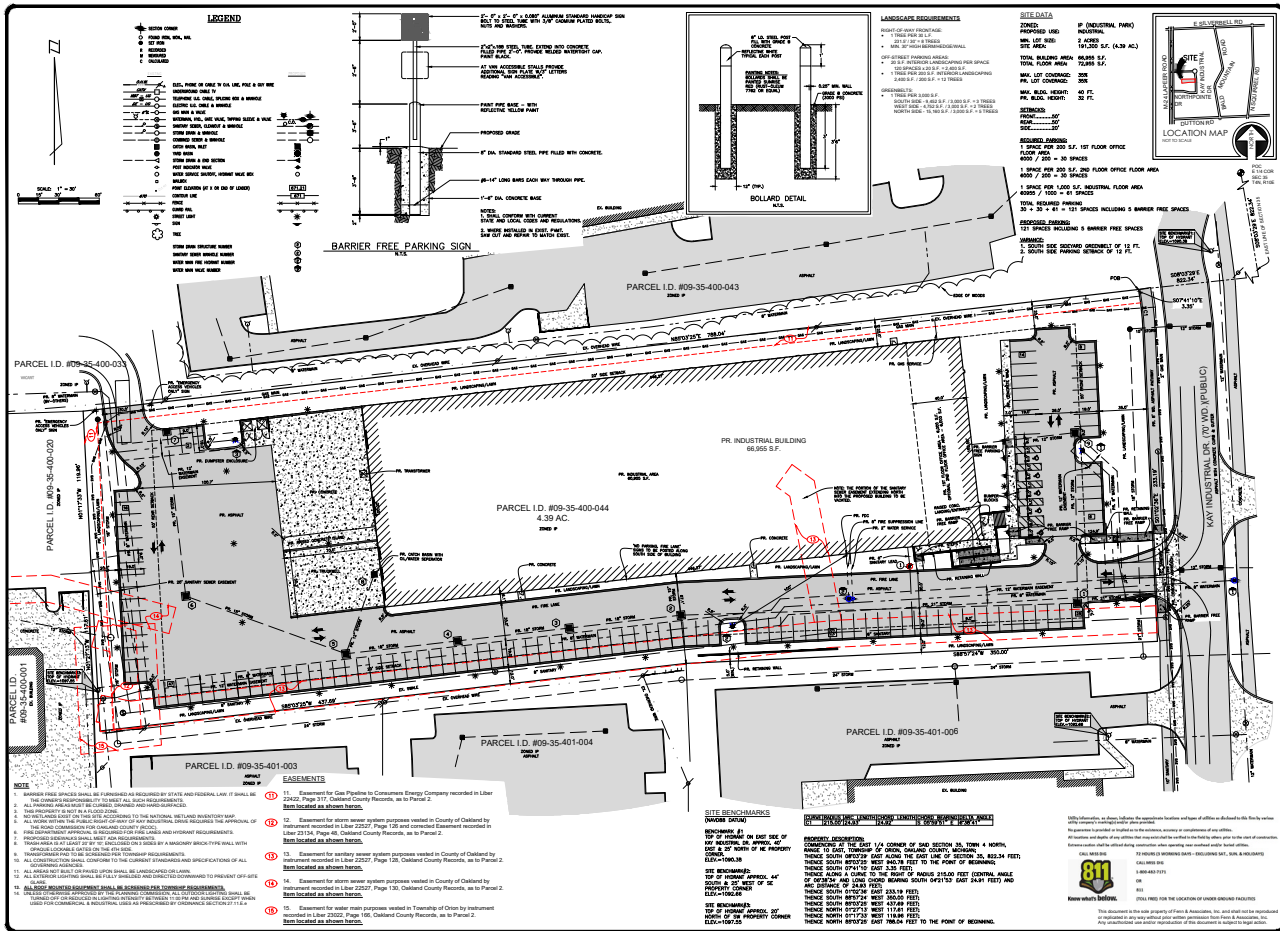
IP

Zoning



Year Built	2024	Parking	120+ Spaces
Total Available	66,955 – 72,955 SF	HVAC	To Suit
Available Office	6,000 SF to 12,000 SF	Power	To Suit
Acreage	4.39 Acres	Lighting	LED
Construction	Masonry	Restrooms	To Suit
Roof	New	Grade Level Doors	Two (2)
Floors	To Suit	Truckwells / Docks	Three (3)
Floor Drains	To Suit	Cranes	To Suit
Clear Height Under Joist	27' +/-	Sprinklers	ESFR

Site Plan



Fenn & Associates, Inc. Land Surveying and Civil Engineering 17100 S. Lapeer Rd., Suite 200, Orion, MI 48369 Phone: 586-234-2707 Fax: 586-234-2020 www.fennandassociates.com	
SITE ENGINEERING PLANS KAY INDUSTRIAL DR. PART OF THE SE 1/4 OF SECTION 34, T41 N, R10 E ORION TOWNSHIP, OKLAND COUNTY, MICHIGAN	
DISTRIBUTION PREPARED BY: [Signature] CHECKED BY: [Signature] APPROVED BY: [Signature] DATE: 11/15/23	
CLIENT MODE DEVELOPMENT, INC. 3200 VAN DYKE, STE 200 STERLING HEIGHTS, MI 48312 PHONE: 588-977-8840	
PROJECT NAME KAY INDUSTRIAL DR.	
PROJECT NUMBER C20-038.11X	
SHEET NAME GENERAL PLAN	
SHEET NUMBER 2 OF 12	

Comments

- + Direct access off S. Lapeer Rd at Kay Industrial Dr. & Northpointe Dr.
- + Close proximity to I-75

- + Unique Improved Industrial Park Opportunity
- + Lease Rate: TBD
- + Summer 2024 Occupancy

Contact Us

Jake Ginster
 Associate
 +1 248 351 2082
 jake.ginster@cbre.com

Charles M. Ginster
 Senior Vice President
 +1 248 351 2063
 chuck.ginster@cbre.com

© 2023 CBRE, Inc. All rights reserved. This information has been obtained from sources believed reliable, but has not been verified for accuracy or completeness. You should conduct a careful, independent investigation of the property and verify all information. Any reliance on this information is solely at your own risk. CBRE and the CBRE logo are service marks of CBRE, Inc. All other marks displayed on this document are the property of their respective owners, and the use of such logos does not imply any affiliation with or endorsement of CBRE. Photos herein are the property of their respective owners. Use of these images without the express written consent of the owner is prohibited.

