

FOR SALE

+/- 3,000 SF Office Condo

***Plymouth Greene Office Campus
1000 Germantown Pk, Units# E2 & E3, Plymouth Meeting, PA 19462***



Property Highlights

- ◆ Newly Renovated Building
- ◆ 8 Offices, 2 Conference and Break Rooms
- ◆ Great Location near Plymouth Meeting Mall
- ◆ Less than 2 Miles to the Turnpike
- ◆ Furniture and Artwork Included
- ◆ Asking \$725,000



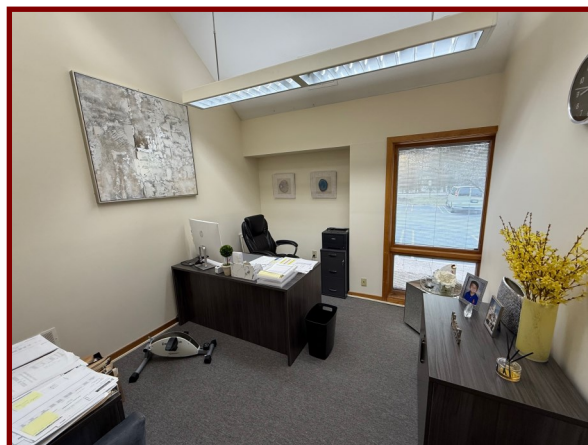
BILL MCGEEHAN
484-354-5880
BMCGEEHAN@CONTINENTALREALTY.COM



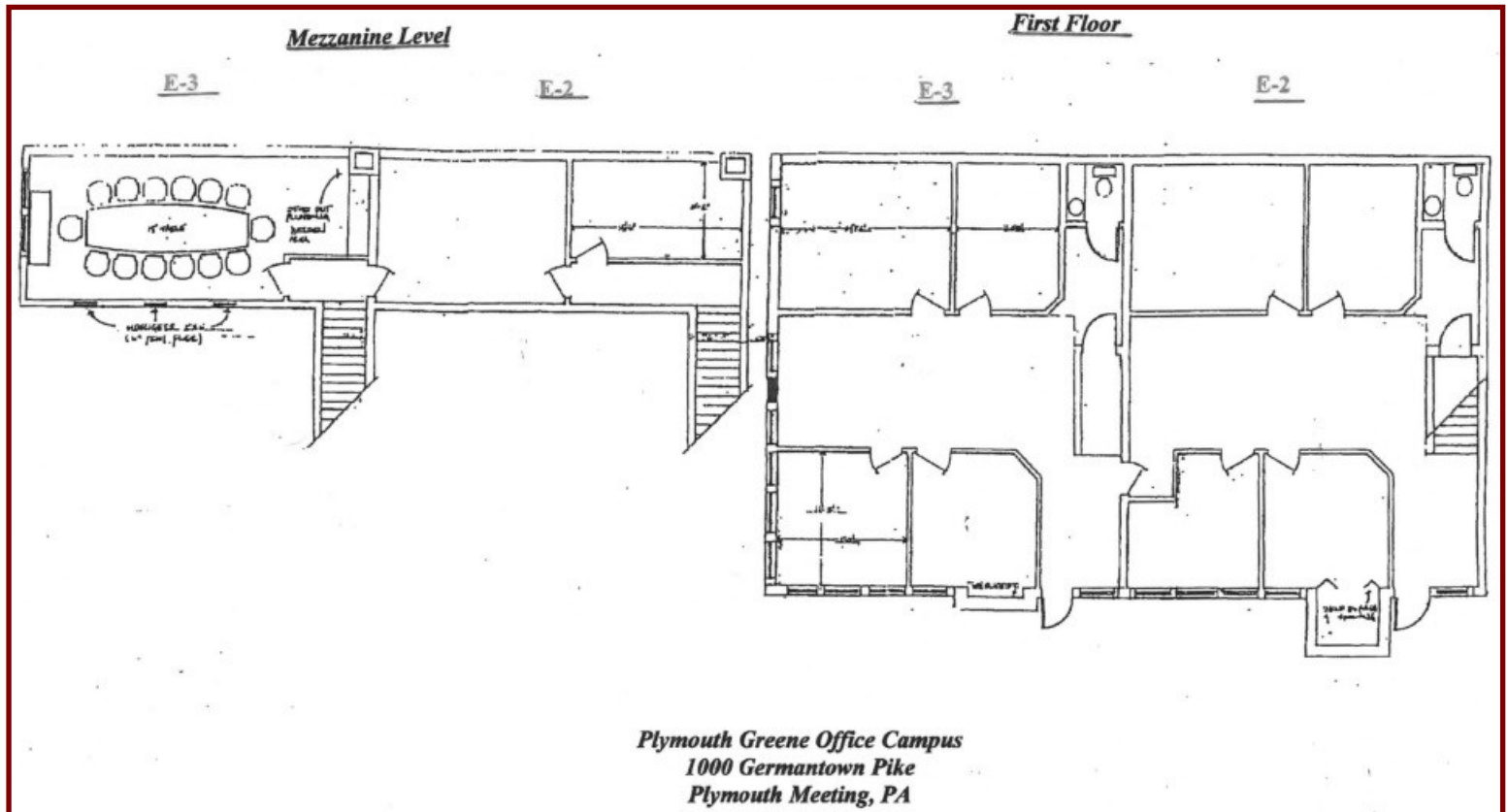
Property Overview

For sale: A +/- 3,000 SF turnkey office condo in the meticulously maintained Plymouth Greene Office Campus. This modern, two-story building has recently been updated with new carpet, fresh paint, upgraded light fixtures, and more. The space features 8 private offices, 2 conference rooms, a reception area, 2 break rooms, 2 restrooms, and ample parking. The building boasts high ceilings and tasteful artwork, all of which is included in the sale, along with the office furniture and some additional equipment.

This property offers flexibility for an owner-user, with the option to occupy the entire space or easily split it into two separate units. Conveniently located near shops, restaurants, hotels, and the Plymouth Meeting Mall, with quick access to major highways including Routes 276, 476, and 202. Asking price: \$725,000. Contact us for more details.



Floor Plan



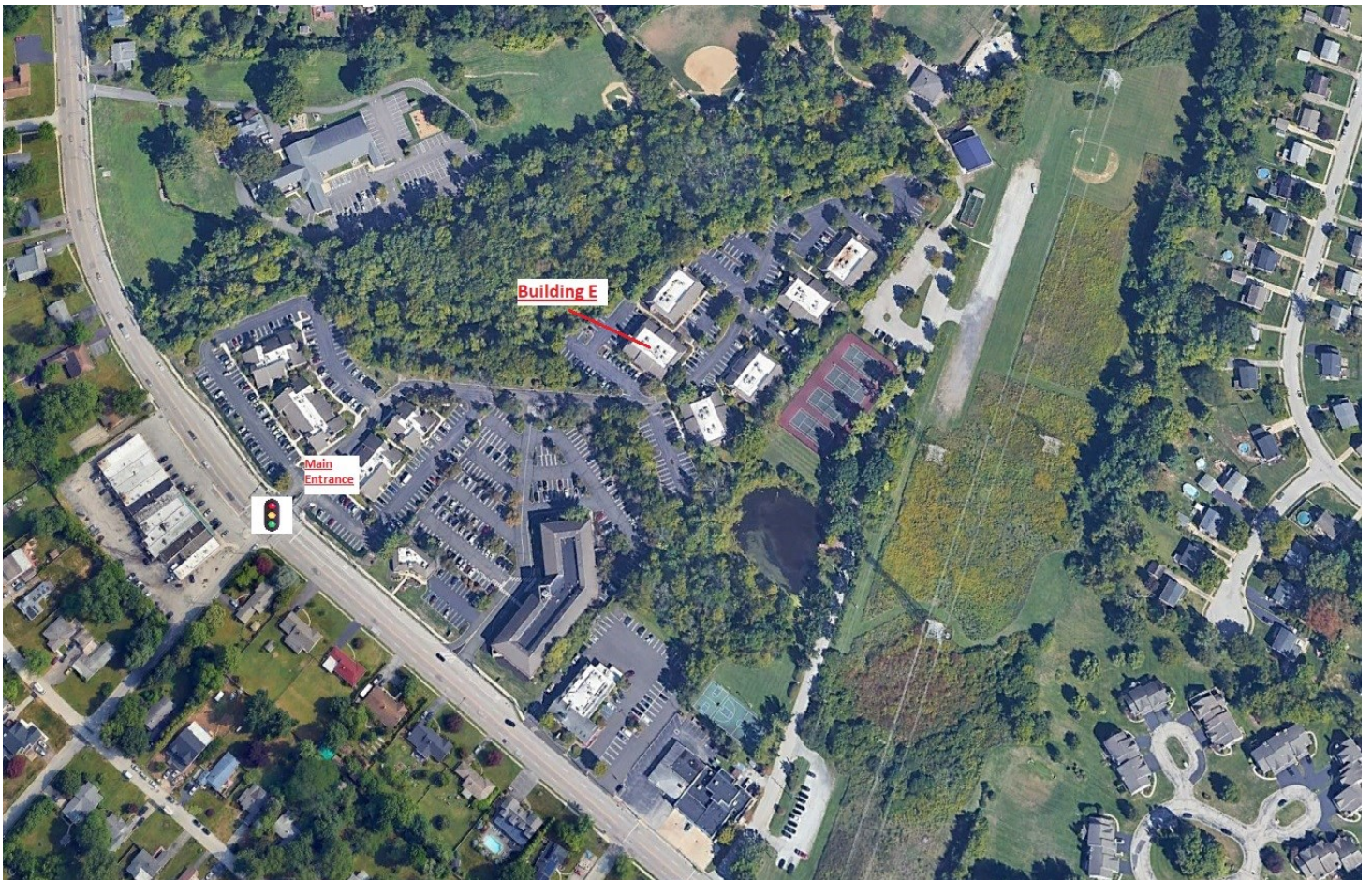
Interior Photos



Interior Photos Cont'd



Exterior and Aerial Photo



Location Map

