



For Lease

4,000 Sf Freestanding Retail

1130 E Dundee Rd, Palatine, IL 60074

\$25.50 SF/yr (NNN)

For Lease: 4,000 SF Freestanding Building Available. Located on major retail corridor just off Rand Rd & Dundee Rd in Palatine, IL. Property sits on .62 acres of land with 90' of frontage on heavily traveled Dundee Rd seeing over 40,700 VPD. The property benefits from a signalized ENTRANCE and easy access to HWY 53. Delivered in new vanilla box condition!

Contact us:

Brad Belden

Senior Vice President

773 531 6886

Brad.Belden@colliers.com

Colliers

www.colliers.com/en/countries/united-states/cities/chicago/chicago-retail-sales-and-leasing-team

Executive Summary



Offering Summary

Lease Rate:	\$25.50 SF/yr (NNN)
Building Size:	4,000 SF
Available SF:	4,000 SF
Ceiling Height to Joist:	14'
Lot Size:	0.62 Acres
VPD:	40,719
Year Built:	1981
Remodeled:	2025
Zoning:	C
Market:	Chicago
Submarket:	Northwest

Property Overview

For Lease: 4,000 SF Freestanding Building Available. Located on major retail corridor just off Rand Rd & Dundee Rd in Palatine, IL. Property sits on .62 acres of land with 90' of frontage on heavily traveled Dundee Rd seeing over 40,700 VPD and easy access to HWY 53.

Property Highlights

- Excellent Visibility
- Signalized Entrance
- Pylon Sign
- Ample Parking
- 14' to Joist
- Surrounded by National Retailers
- Over 40,700 VPD
- .62 Acres of Land
- Outdoor Storage
- Brand New Vanilla Box Condition

Brad Belden

Senior Vice President
773 531 6886
Brad.Belden@colliers.com

Area Retailers



Brad Belden

Senior Vice President

773 531 6886

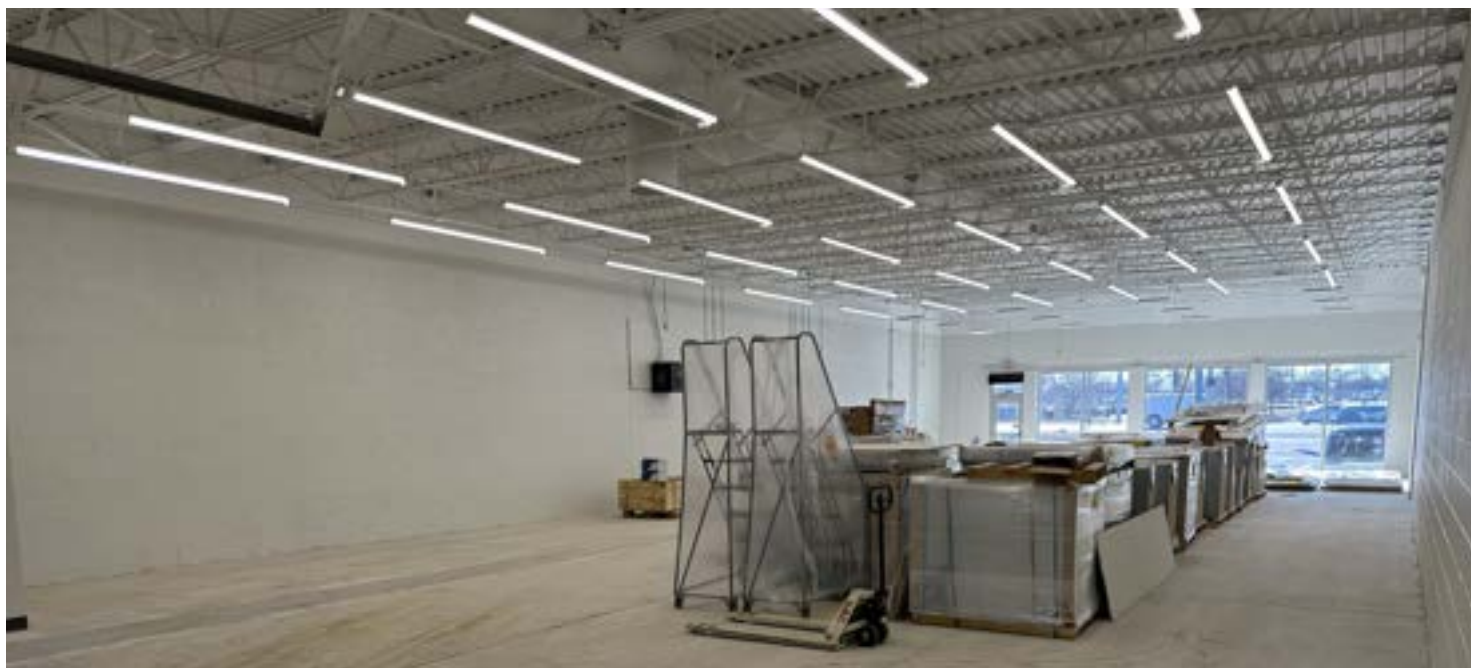
Brad.Belden@colliers.com

For Lease 1130 E Dundee Rd, Palatine, IL 60074

[View Online](#)

[View Video](#)

Interior



Brad Belden
Senior Vice President
773 531 6886
Brad.Belden@colliers.com

www.colliers.com/en/countries/united-states/cities/chicago/chicago-retail-sales-and-leasing-team



For Lease 1130 E Dundee Rd, Palatine, IL 60074

[View Online](#)

[View Video](#)

Exterior

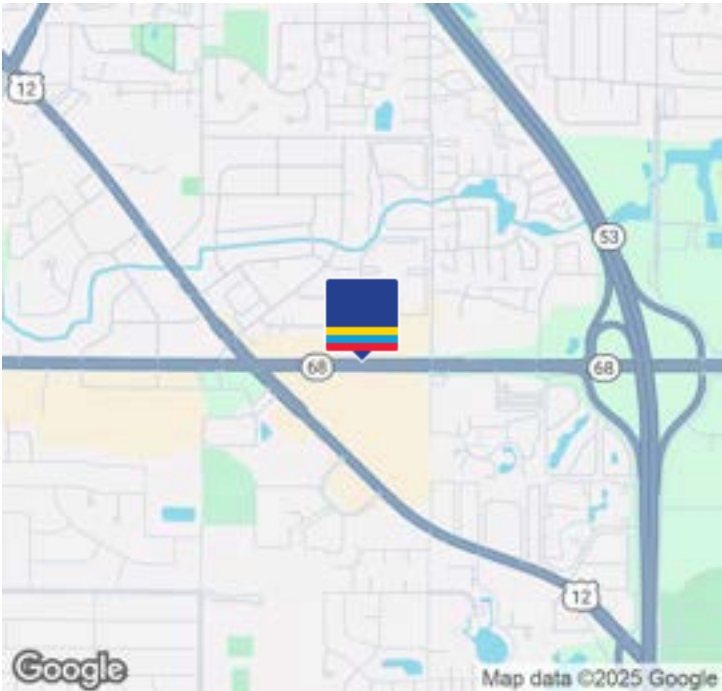
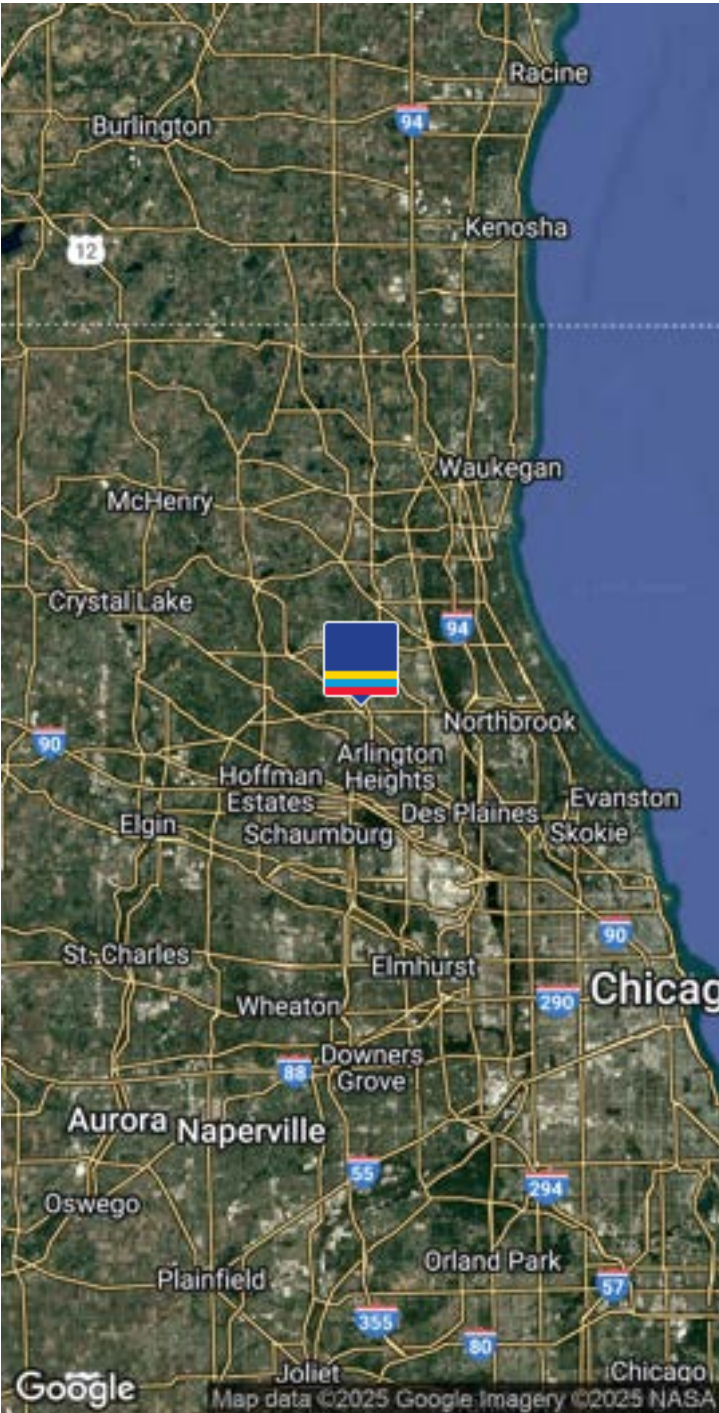


Brad Belden
Senior Vice President
773 531 6886
Brad.Belden@colliers.com

www.colliers.com/en/countries/united-states/cities/chicago/chicago-retail-sales-and-leasing-team



Location Map



Demographics	1 Mile	3 Miles	5 Miles
Total population	25,652	101,053	240,250
Median age	37	42	42
Total households	9,782	40,854	94,010
Total persons per HH	2.6	2.5	2.6
Average HH income	\$92,535	\$135,752	\$152,911
Average house value	\$303,132	\$395,665	\$435,023

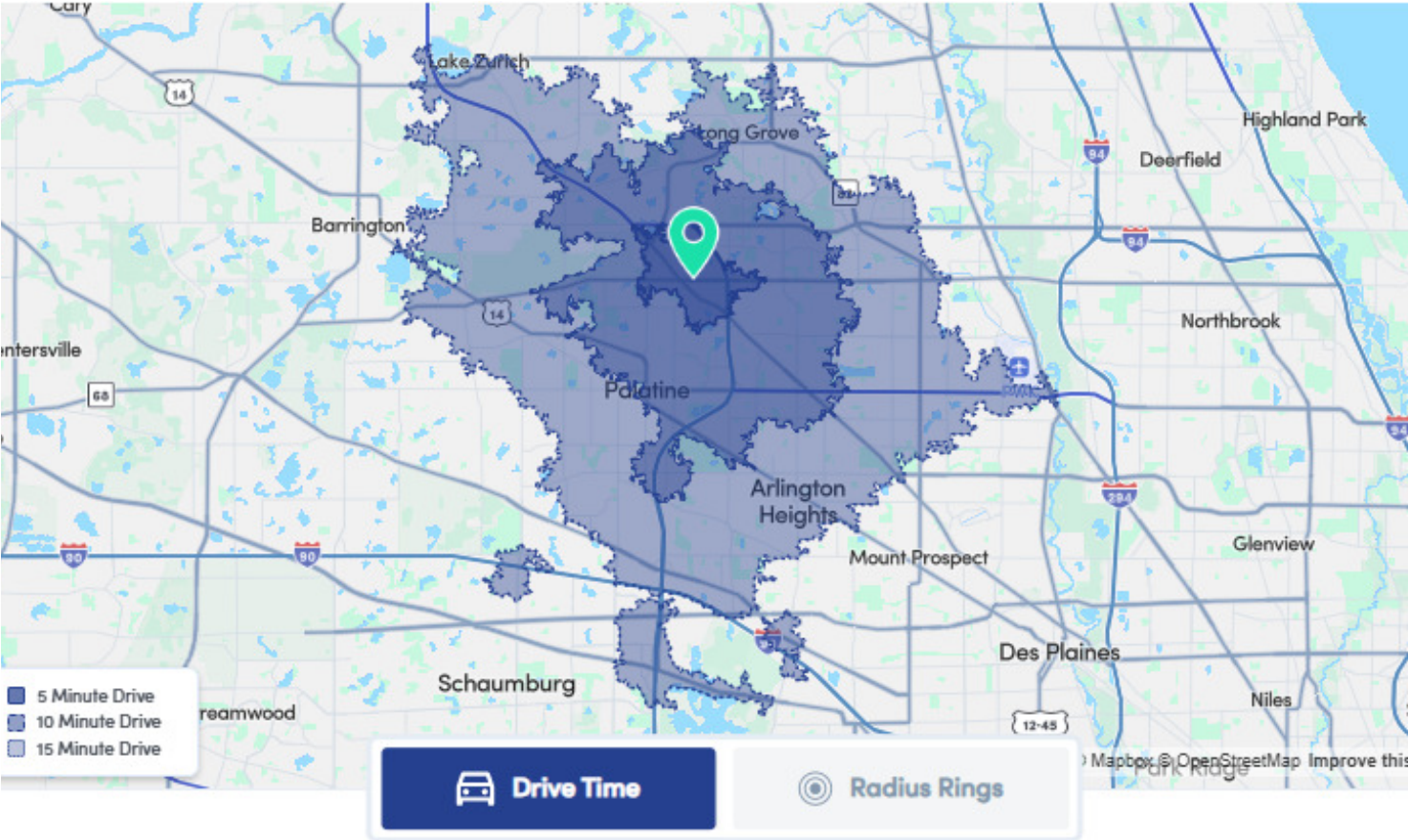
Location Overview

Palatine is a suburb of Chicago with a population of 66,548. Palatine is in Cook County and is one of the best places to live in Illinois. Living in Palatine offers residents an urban suburban mix feel and most residents own their homes. In Palatine, there are a lot of coffee shops and parks. Many families and young professionals live in Palatine. The public schools in Palatine are highly rated.

Brad Belden
Senior Vice President
773 531 6886
Brad.Belden@colliers.com



Drive Time Population



Overview

	5 minutes	10 minutes	15 minutes
Population	18,965	84,426	240,152
Workday Population	13,659	77,813	240,988
Civilian Labor Forc...	544	2,174	6,589

Brad Belden
Senior Vice President
773 531 6886
Brad.Belden@colliers.com

