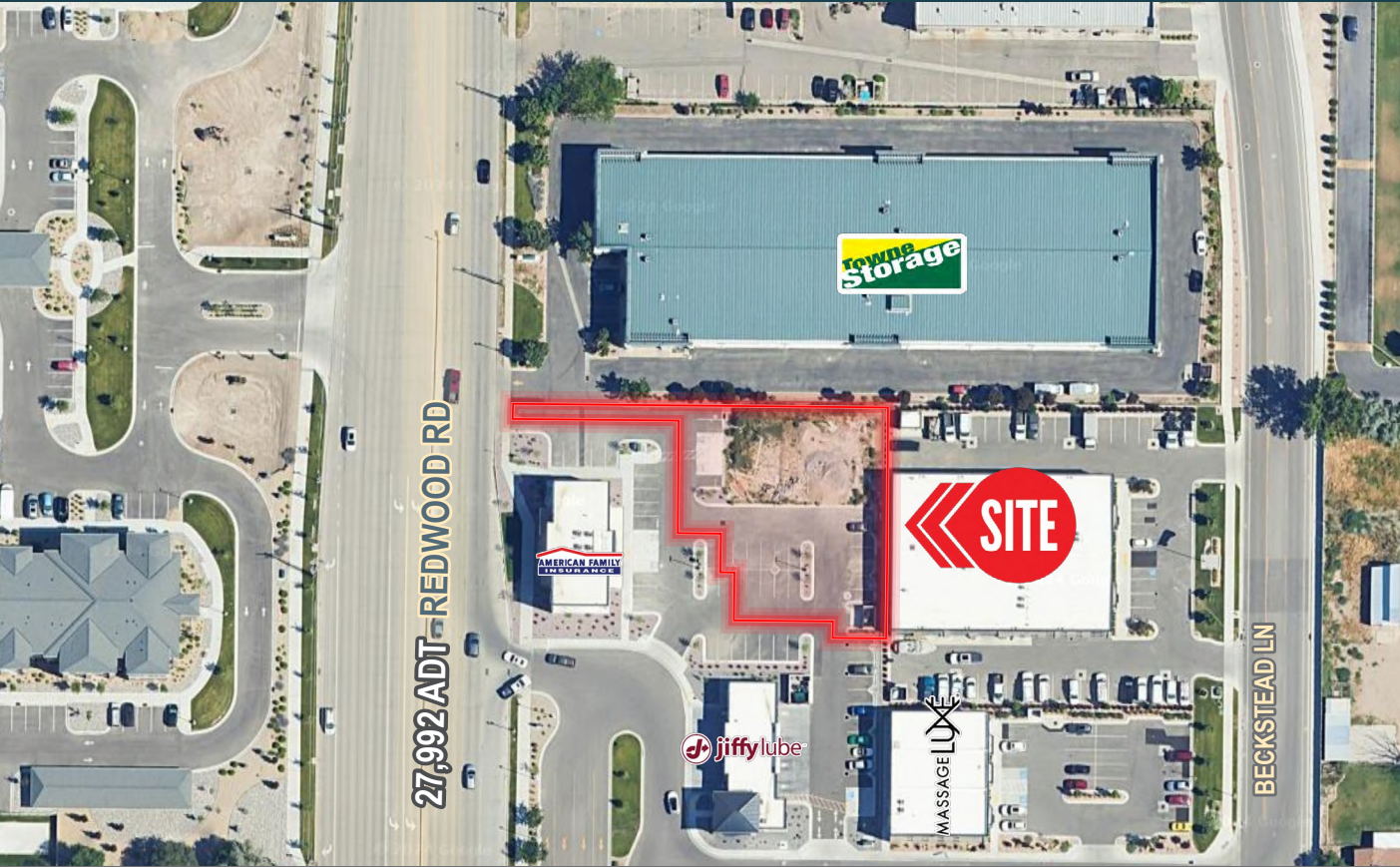


# 114 REDWOOD PAD

MW

FOR SALE OR BUILD TO SUIT OPPORTUNITY



## PROPERTY DETAILS

11333 S REDWOOD RD, SOUTH JORDAN, UT 84095

- Great owner/user land or Office Building Build to Suit purchase opportunity
- 0.43 acres (18,731 SF)
- Fully Improved with asphalt, paved parking, concrete, curbing, sidewalks and landscaping
- Approximately 26 allocated parking stalls
- Zoned Mixed Use (MU) with South Jordan City
- Site is approved for a 2 Story Office Building that is 5,974 SF
- Improved Land Price: \$800,000
- Build to Suit price will be determined on the building costs and buildout

## 2024 DEMOS

### EST. POPULATION



1 MILE » 10,488  
3 MILE » 94,032  
5 MILE » 292,249

### EST. HOUSEHOLDS



1 MILE » 3,232  
3 MILE » 30,494  
5 MILE » 95,016

### EST. AVERAGE HH INCOME



1 MILE » \$167,568  
3 MILE » \$154,472  
5 MILE » \$141,500



**MOUNTAIN WEST**  
COMMERCIAL REAL ESTATE

### BRIEONA PAPPAS

bpappas@mwcre.com  
direct 801.704.1666  
[View Profile](#)

### JOSH VANCE, CCIM

jvance@mwcre.com  
direct 801.456.8857  
[View Profile](#)

### KADE PATTERSON



RADDON REAL ESTATE GROUP  
kade.patterson@raddonco.com  
office 801.576.1553

### FULL SERVICE COMMERCIAL REAL ESTATE

312 East South Temple  
Salt Lake City, UT 84111  
Office 801.456.8800  
[www.mwcre.com](http://www.mwcre.com)

# 114 REDWOOD PAD

MW

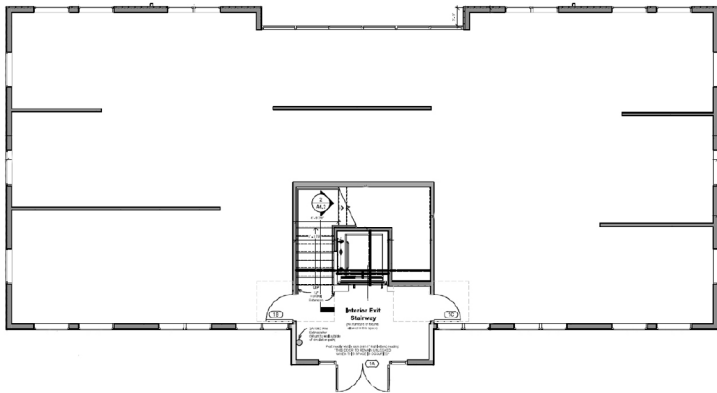
## POTENTIAL ELEVATIONS & FLOOR PLANS



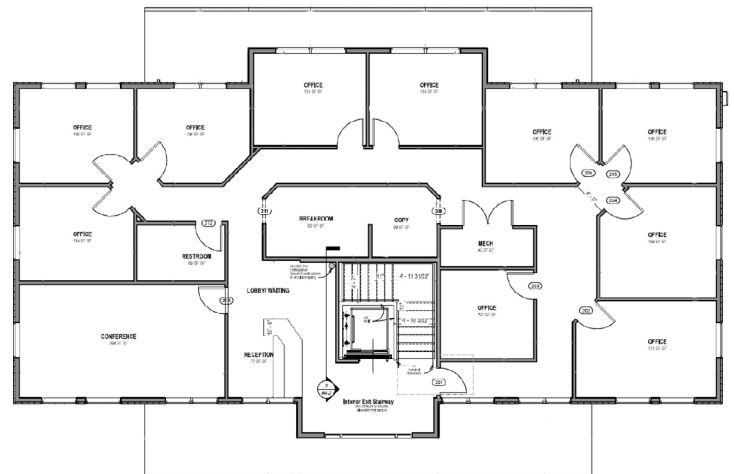
FRONT VIEW



STREET VIEW



MAIN LEVEL



UPPER LEVEL



**MOUNTAIN WEST**  
COMMERCIAL REAL ESTATE

**BRIEONA PAPPAS**

bpappas@mwcre.com  
direct 801.704.1666  
[View Profile](#)

**JOSH VANCE, CCIM**

jvance@mwcre.com  
direct 801.456.8857  
[View Profile](#)

**KADE PATTERSON**

RADDON REAL ESTATE GROUP

kade.patterson@raddonco.com  
office 801.576.1553

**FULL SERVICE  
COMMERCIAL REAL ESTATE**

312 East South Temple  
Salt Lake City, UT 84111  
Office 801.456.8800  
[www.mwcre.com](http://www.mwcre.com)



**MOUNTAIN WEST**  
COMMERCIAL REAL ESTATE

**BRIEONA PAPPAS**

bpappas@mwcre.com  
direct 801.704.1666  
[View Profile](#)

**JOSH VANCE, CCIM**

jvance@mwcre.com  
direct 801.456.8857  
[View Profile](#)

**KADE PATTERSON**

RADDON REAL ESTATE GROUP

kade.patterson@raddonco.com  
office 801.576.1553

**FULL SERVICE  
COMMERCIAL REAL ESTATE**

312 East South Temple  
Salt Lake City, UT 84111  
Office 801.456.8800  
[www.mwcre.com](http://www.mwcre.com)