



---

500  
SANSOME  
SAN FRANCISCO

---

# HIGHLIGHTS

24/7 secure access

Dog friendly

Secure bicycle parking

Showers

Multiple nearby parking options

11' high ceilings

Large operable windows

Exposed architectural elements

Open flexible floor plans

Built/Renovated 1929/2015

Typical Floor Size 16,443 SF

Building Height 8 Stories

2 Passenger Elevators

1 Freight Elevator

500 Sansome sits at the intersection of **Jackson Square** and the **Financial District**, offering a rare blend of historic charm and urban energy.



**100**  
WALK SCORE

**87**  
BIKE SCORE

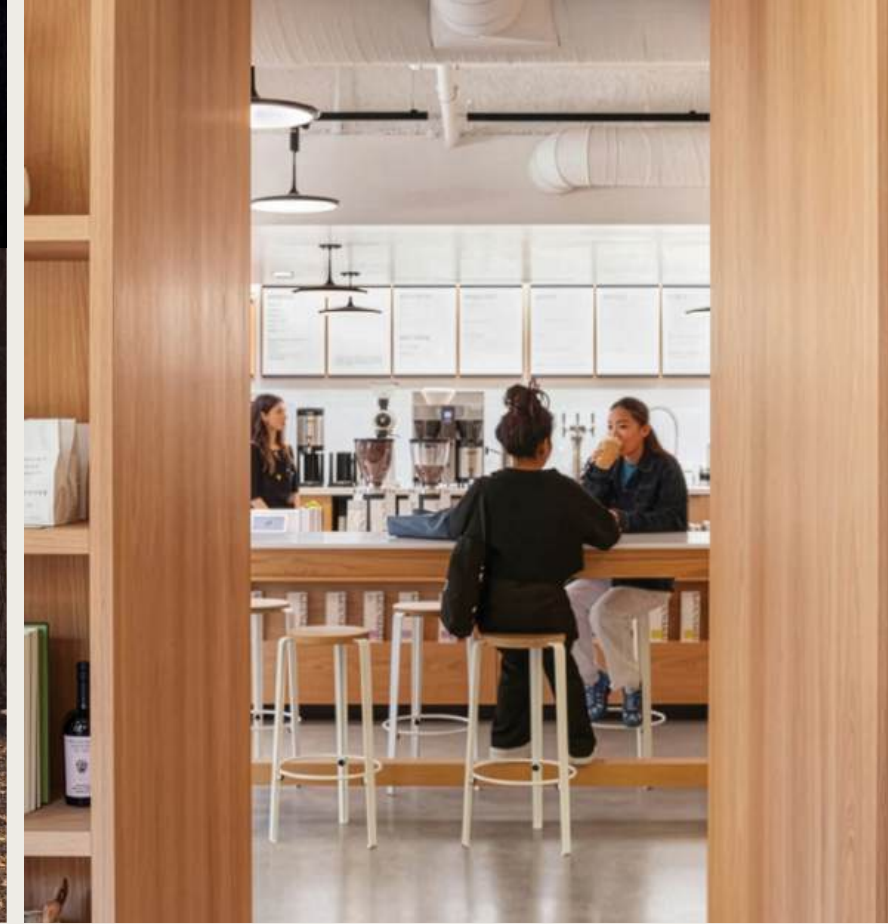
**100**  
TRANSIT  
SCORE

**10**  
MIN. WALK  
TO FERRY  
BUILDING

**10**  
MIN. WALK  
TO BART

# NEIGHBORHOOD

500  
SANSOME



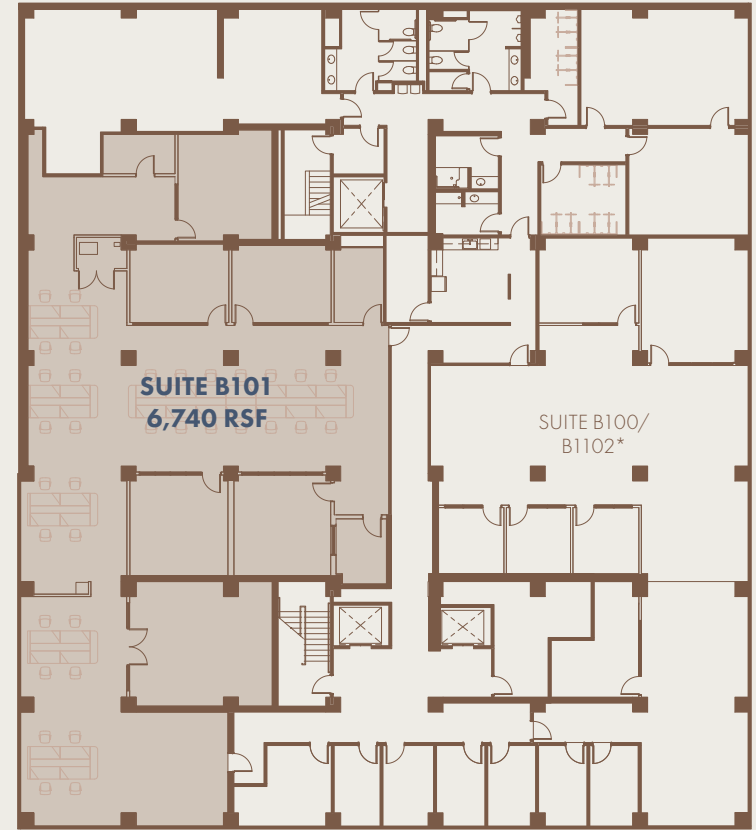
# AVAILABILITY

FLOOR	SUITE	SIZE (RSF)
BASEMENT	B-101	6,740
<b>2ND FLOOR</b>	<b>FULL FLOOR</b>	<b>17,101</b>
2ND FLOOR	200	13,610
2ND FLOOR	220	3,491
3RD FLOOR	300	5,549
3RD FLOOR	380 (JUNE 01, 2026)	1,673
4TH FLOOR	460	6,471
5TH FLOOR	510	5,029
6TH FLOOR	614*	3,579
<b>7TH FLOOR</b>	<b>FULL FLOOR</b>	<b>16,093</b>
7TH FLOOR	700	11,671
7TH FLOOR	750	4,422

# SUITE B101

AVAILABLE 6,740 RSF

*Partially furnished, creative office space with exposed ceilings, polished concrete floors, private offices and conference rooms.*



500  
SANSOME



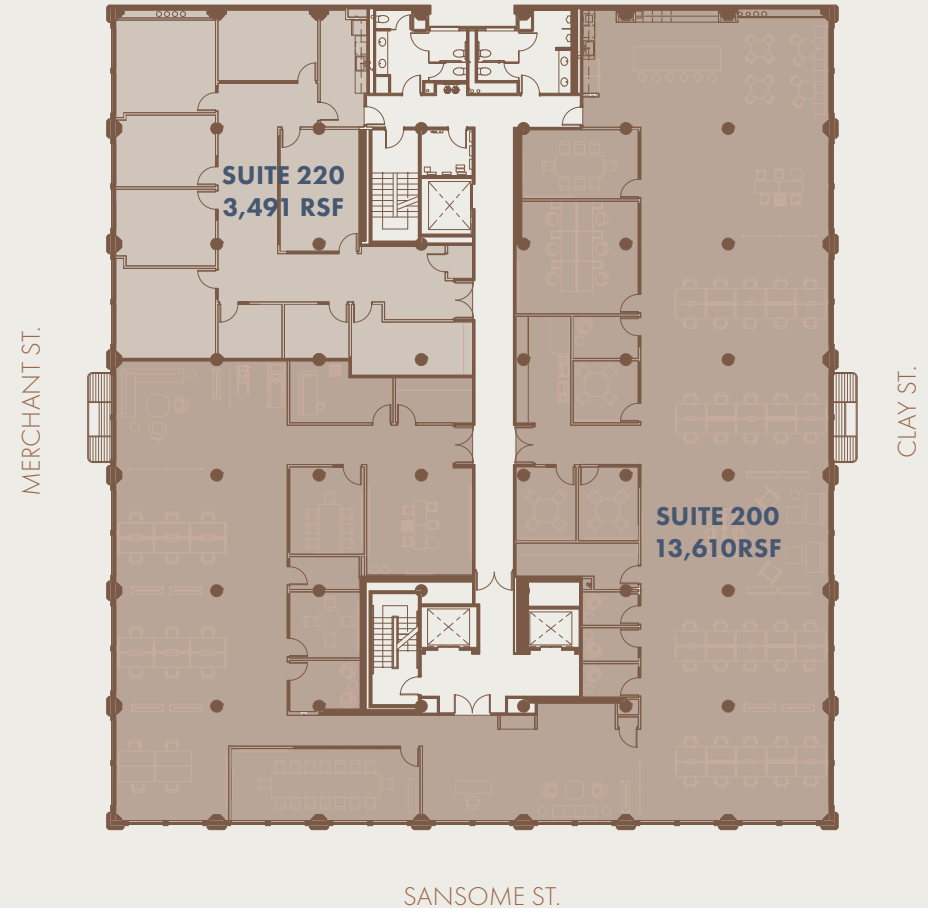
# 2nd FLOOR

AVAILABLE FULL FLOOR 17,101 RSF

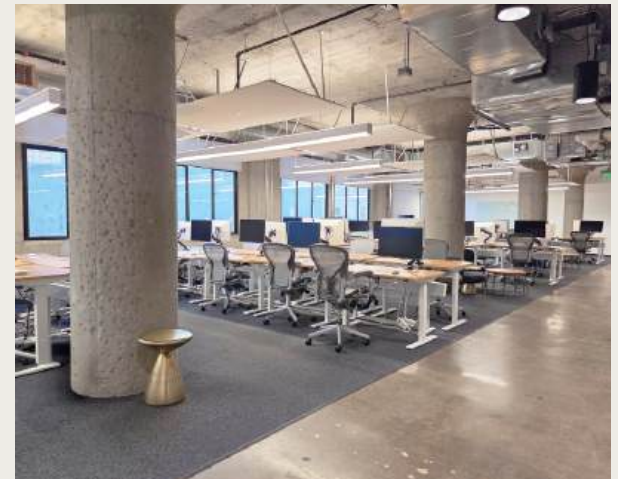
## SUITES

AVAILABLE	200	13,610 RSF
AVAILABLE	220	3,491 RSF

Opportunity to combine two suites for a full floor space. Suite 200 is fully furnished, move-in ready, offering easy expansion into Suite 220. Both suites have exposed 11' high ceilings, polished concrete / carpeted floors, and large operable double pane windows.



500  
SANSOME

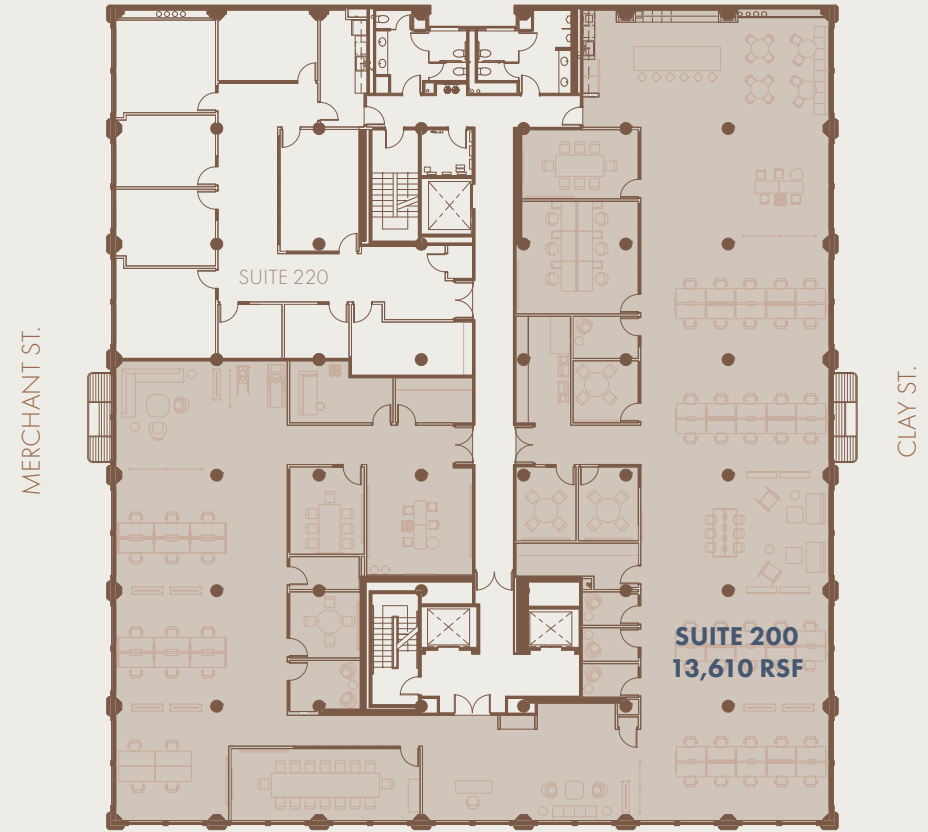


# SUITE 200

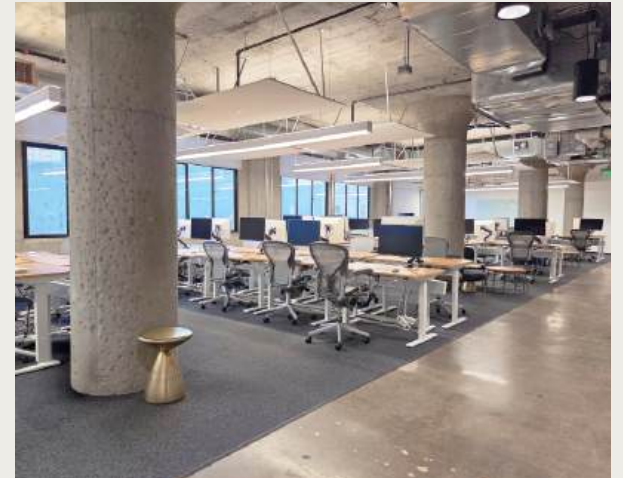
AVAILABLE 13,610 RSF

Move-in ready, fully furnished creative office space with exposed 11' high ceilings, polished concrete / carpeted floors, expansive kitchen and large operable double pane windows.

The open floor plan offers exposure to the north, west and south. A wide range of private office spaces and conference rooms line the interior.



500  
SANSOME



# SUITE 220

AVAILABLE 3,491 RSF

*Creative office space with exposed 11' high ceilings, polished concrete / carpeted floors, kitchen and large operable double pane windows.*



500  
SANSOME



# SUITE 300

AVAILABLE 5,549 RSF

*Partially furnished professional office space with carpeted floors, expansive kitchen and large operable double pane windows.*



500  
SANSOME



# SUITE 380

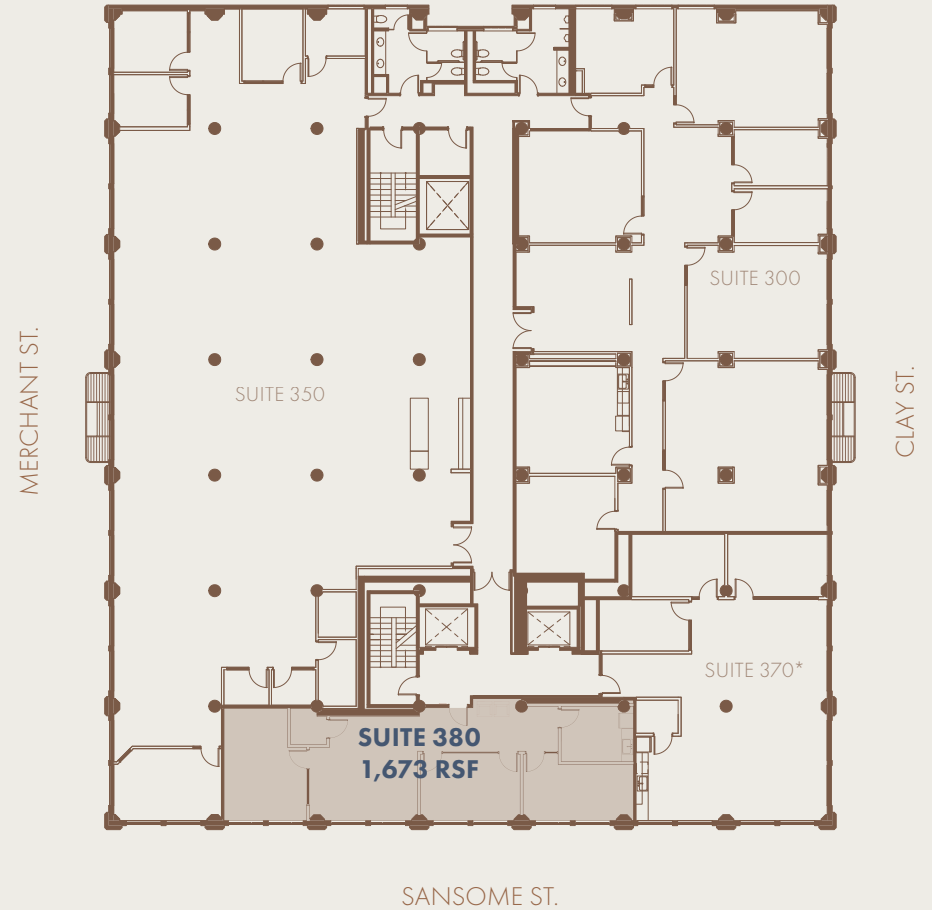
AVAILABLE

1,673 RSF

June 01, 2026

*Creative office space with exposed 11' high ceilings, carpeted floors, private offices, kitchen and large operable double pane windows.*

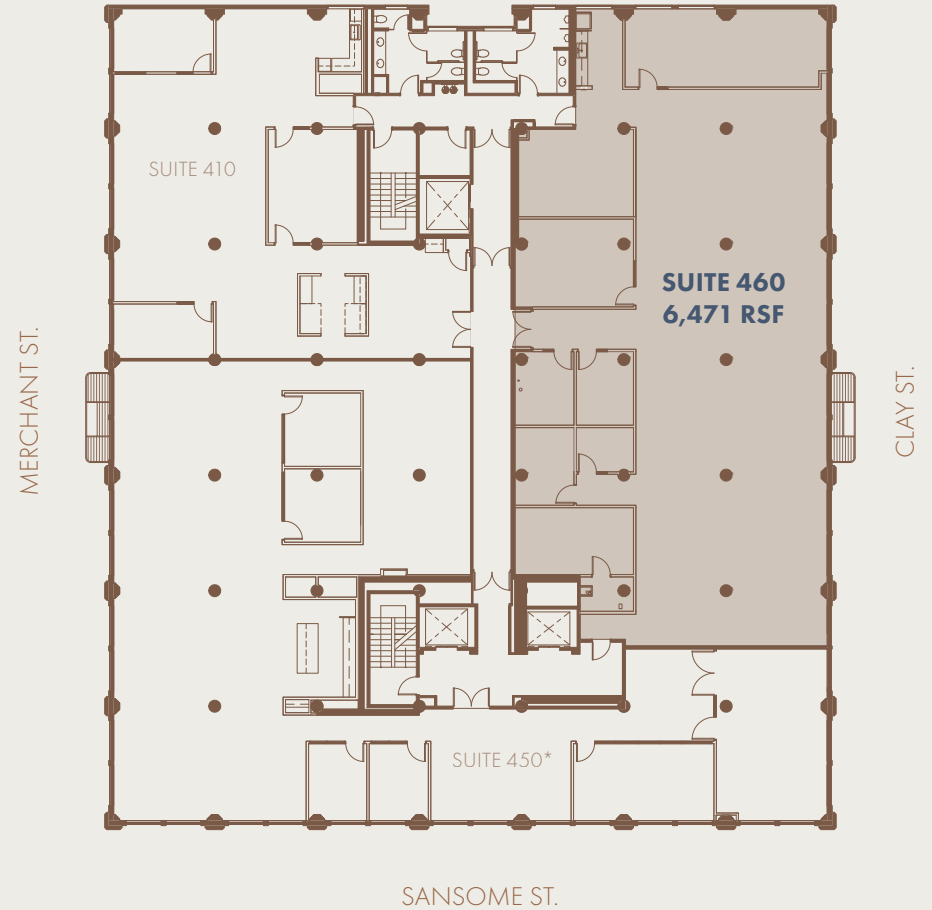
500  
SANSOME



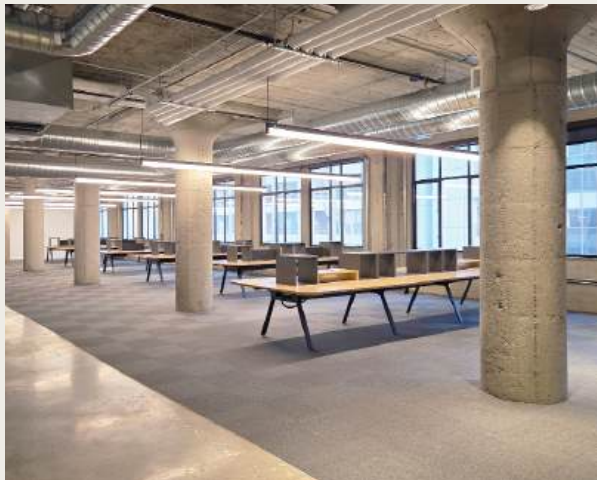
# SUITE 460

AVAILABLE 6,471 RSF

*Finished creative office space with exposed 11' high ceilings, polished concrete / carpeted floors, kitchen and large operable double pane windows.*



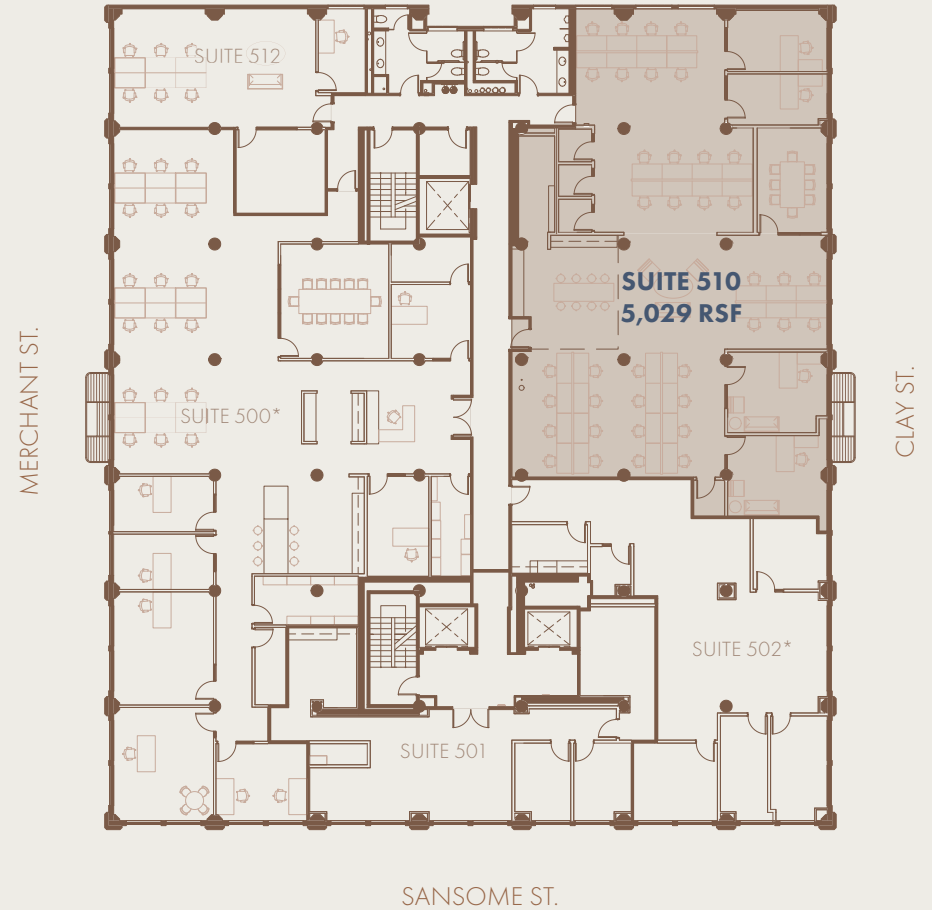
500  
SANSOME



# SUITE 510

AVAILABLE 5,029 RSF

*Furnished creative office space with exposed 11' high ceilings, polished concrete / carpeted floors, kitchen and large operable double pane windows.*



500  
SANSOME

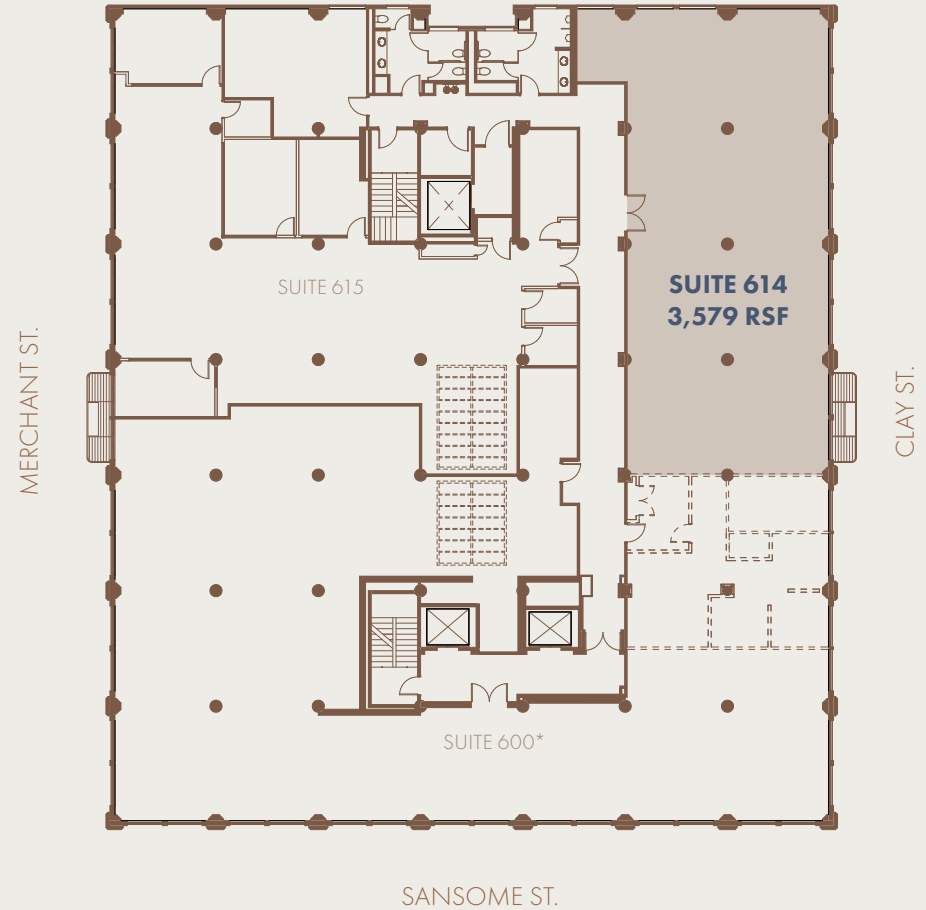


# SUITE 614

AVAILABLE 3,579 RSF

11' high ceilings with exposed architectural elements and operable double pane windows. Mechanical, electrical and plumbing are all stubbed to the space, ready for a custom tenant improvement.

500  
SANSOME



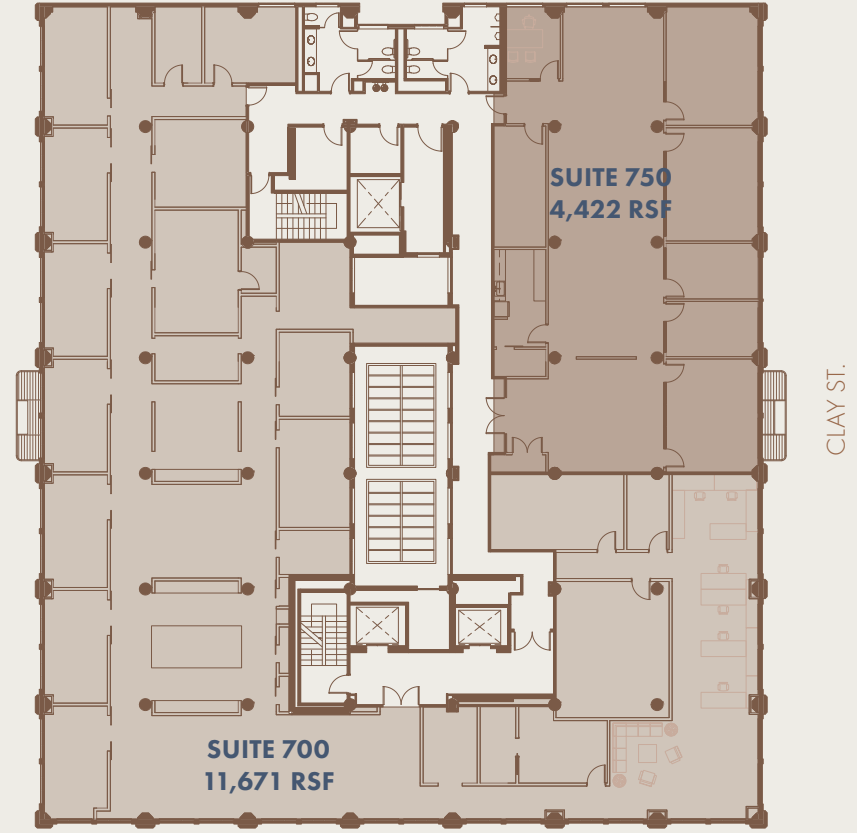
# 7th FLOOR

AVAILABLE FULL FLOOR 16,093 RSF

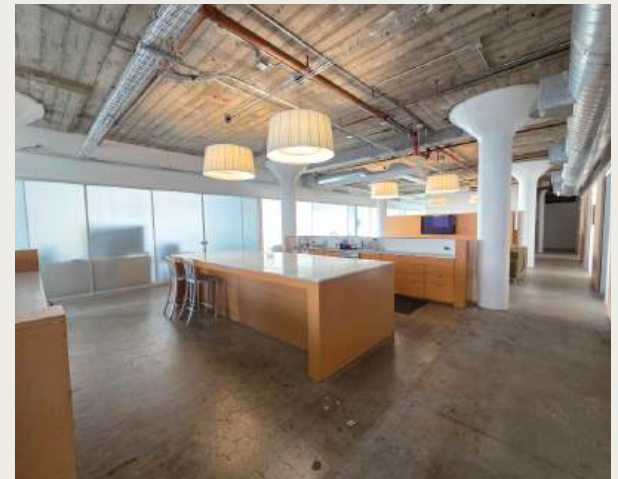
## SUITES

AVAILABLE	700	11,671 RSF
AVAILABLE	750	4,422 RSF

Opportunity to combine two suites for a full floor space. Offering a mix of two creative office spaces with exposed 11' high ceilings, polished concrete / carpeted floors, expansive kitchen and large operable double pane windows.



500  
SANSOME

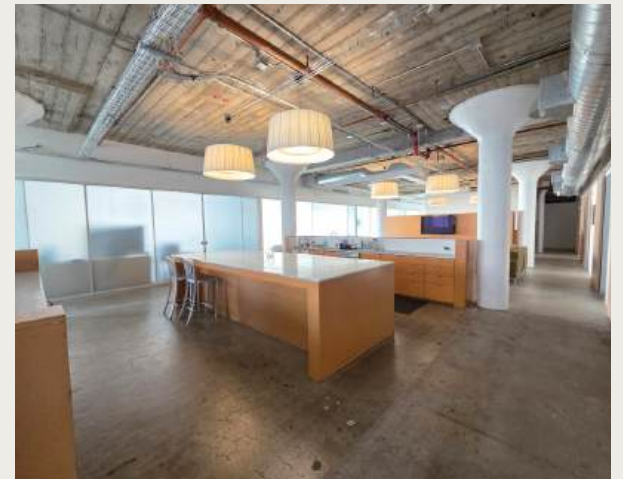
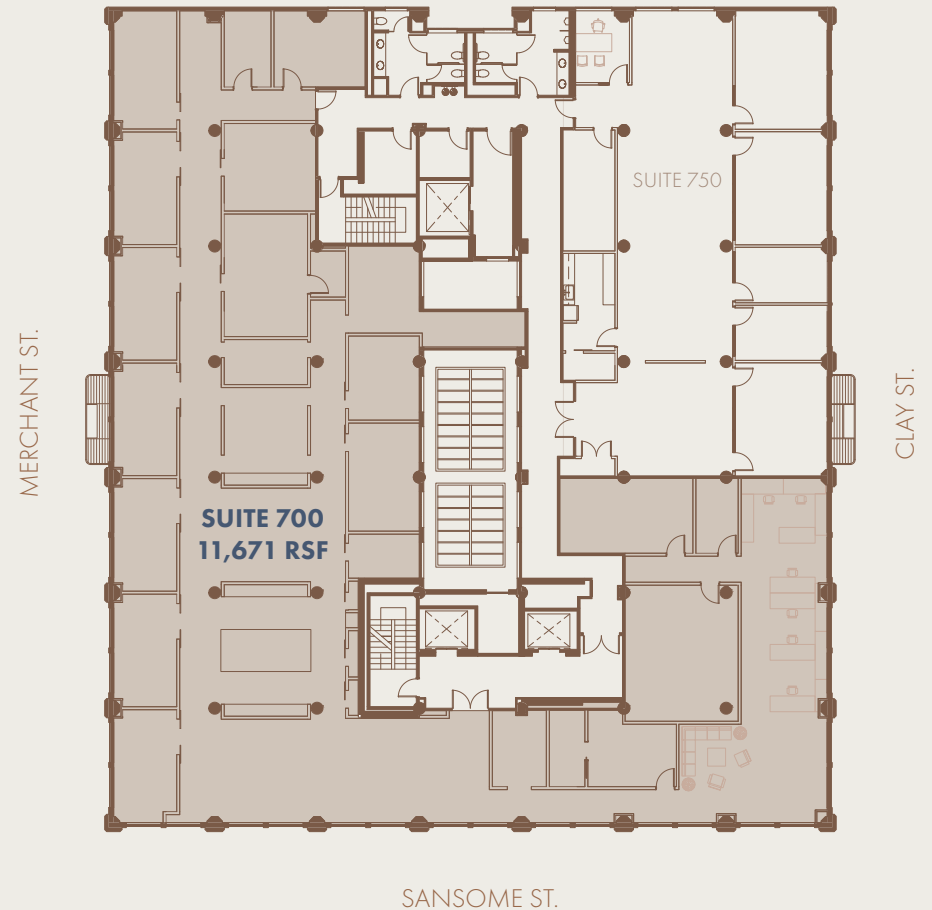


# SUITE 700

AVAILABLE 11,671 RSF

*Creative office space with exposed 11' high ceilings, polished concrete floors, expansive kitchen and large operable double pane windows.*

500  
SANSOME

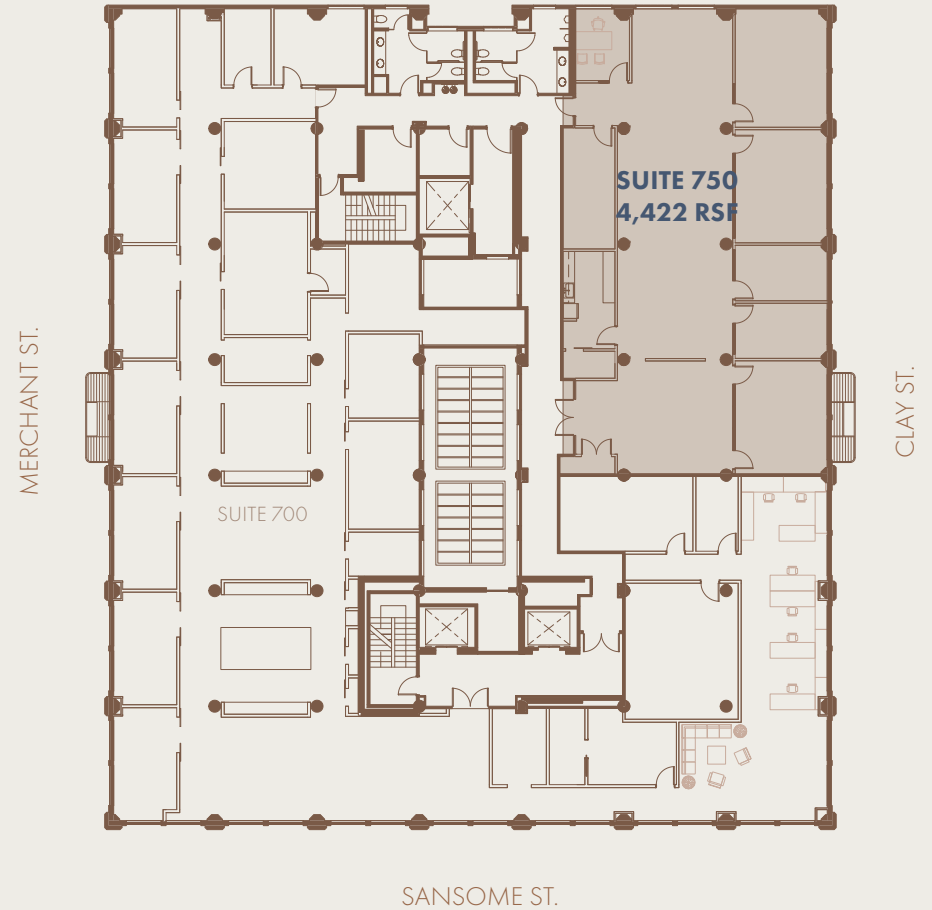


# SUITE 750

AVAILABLE 4,422 RSF

*Creative office space with exposed 11' high ceilings, polished concrete floors, kitchen, and large operable double pane windows. Offering an excellent mix of open office areas, private offices and conference rooms.*

500  
SANSOME





---

# 500

## SANSOME

Grant Weaver  
500 Sansome Street Investors, LLC.  
415.722.1729  
[grant@nclhdevelopment.com](mailto:grant@nclhdevelopment.com)

03/24/2026

*The information contained herein was produced from sources deemed reliable. It is provided without any representation, guarantee, warranty, either express or implied as to its accuracy. Any prospective tenant or broker should conduct an independent investigation to verify all matters deemed material.*