

MURRAY
BUSINESS
CENTER

FOR LEASE

7273 MURRAY DRIVE | STOCKTON | CA



JIM MARTIN
BRE #01214270
jmartin@lee-associates.com
D 209.983.4088

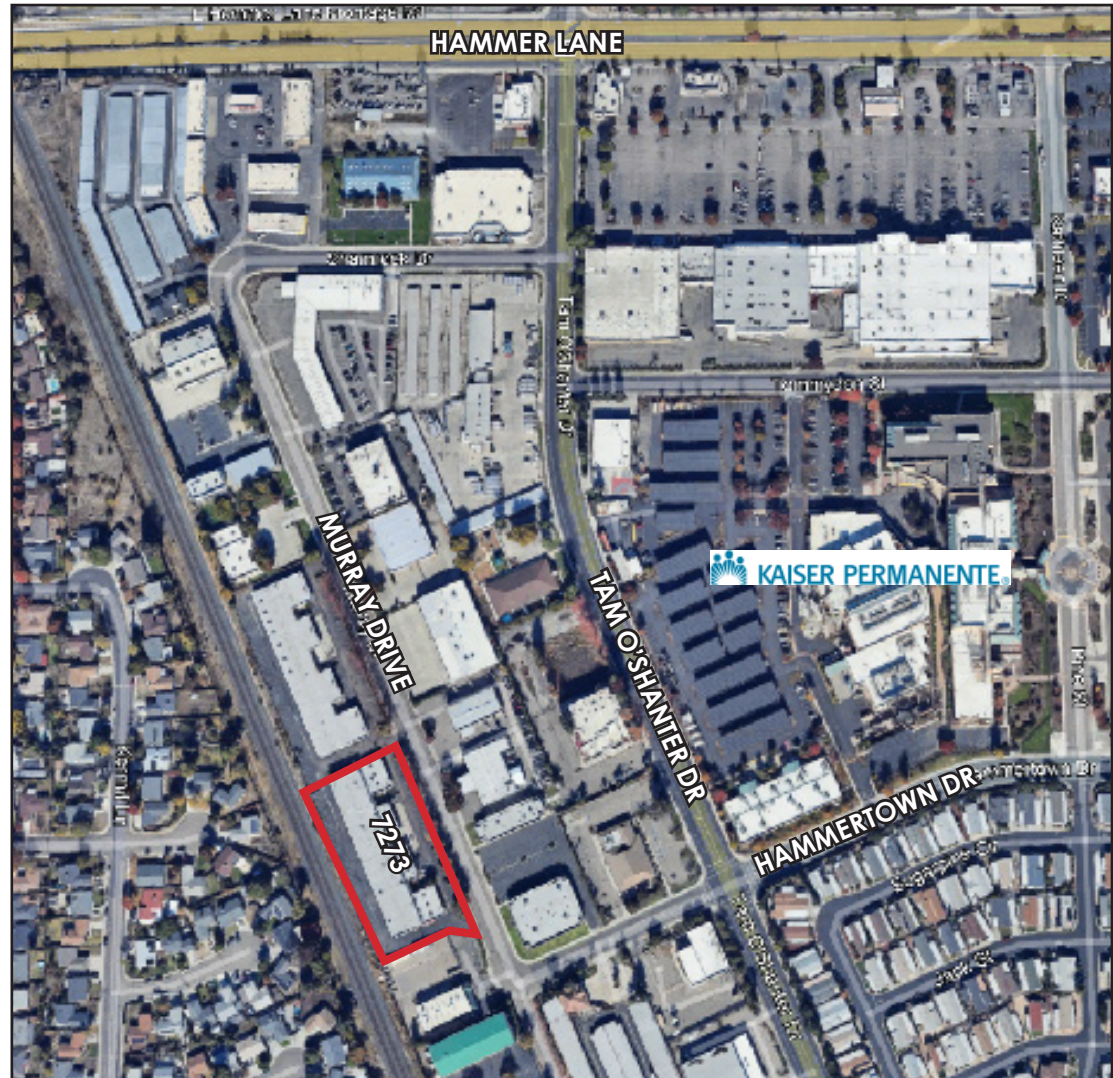
Mason Chambliss
BRE #02237204
mchambliss@lee-associates.com
C 925.336.9660
D 209.983.6831

LEASE RATE: \$1.00 PSF, GROSS

PROPERTY SUMMERY

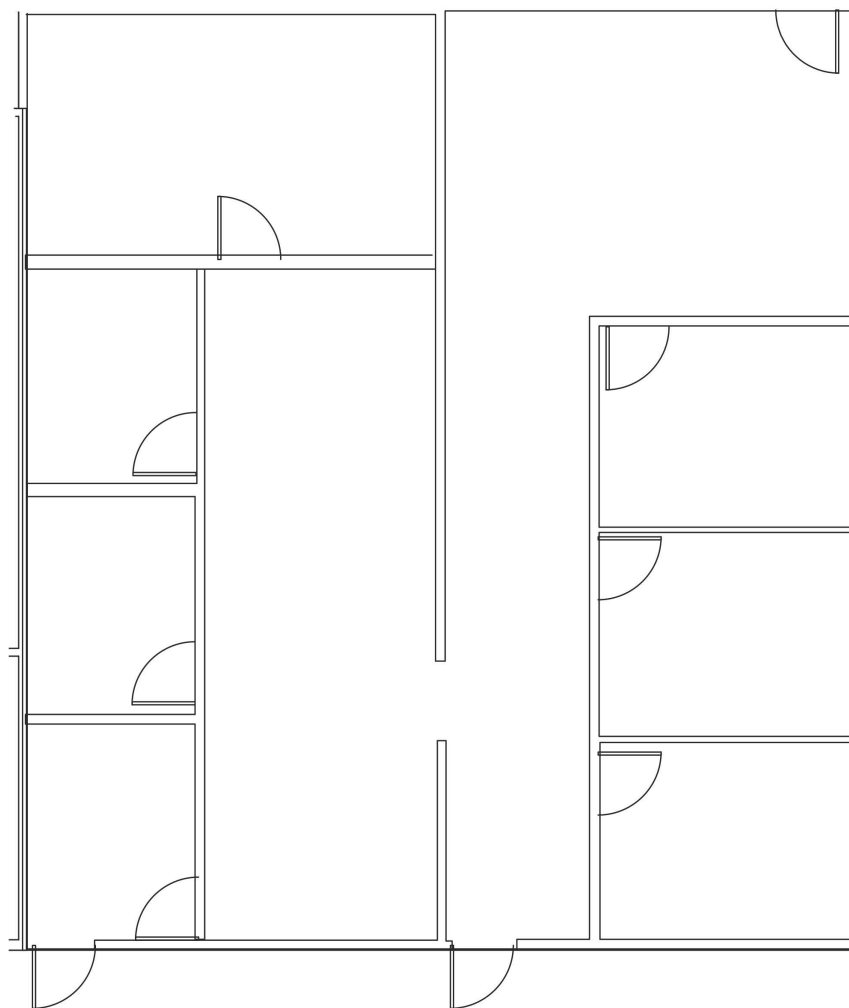
7273 MURRAY DRIVE | STOCKTON | CA

- AVAILABLE SF: 860± SF (Unit #3) and 1,890± SF (Unit #17)
- ZONING: C-G (COMMERCIAL GENERAL)
- AMPLE PARKING
- PROFESSIONALLY MANAGED
- BUILDING SIGNAGE AVAILABLE
- GATED PERIMETER



FLOOR PLAN - UNIT 17

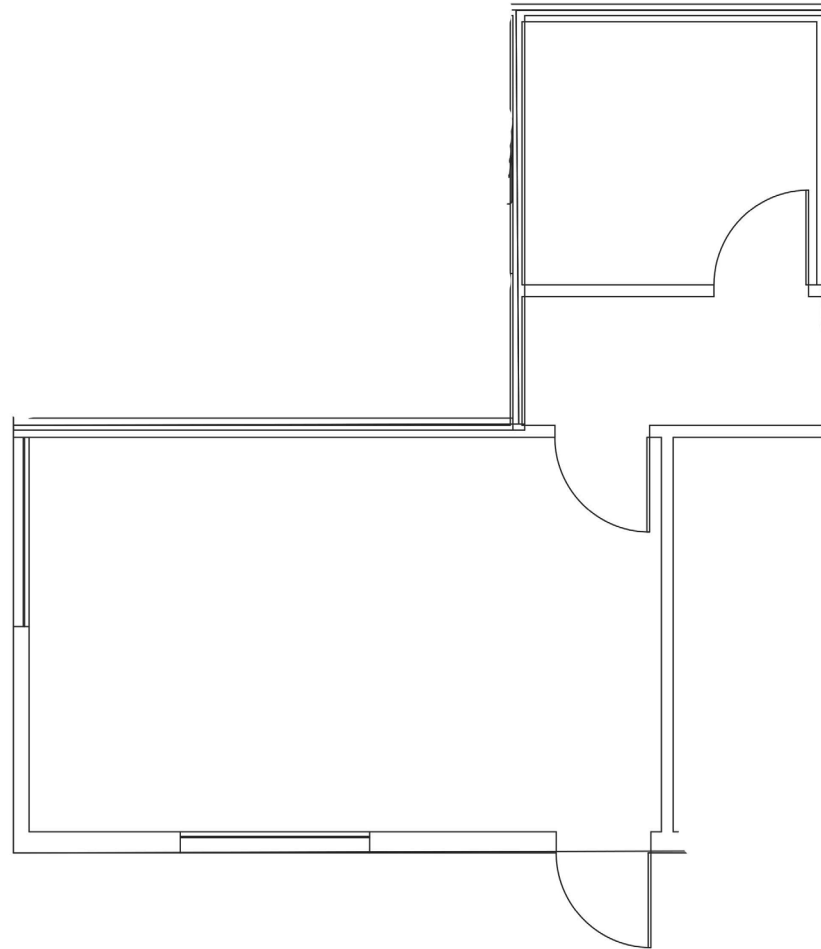
7273 MURRAY DRIVE | STOCKTON | CA



All information furnished regarding property for sale, rental or financing is from sources deemed reliable, but no warranty or representation is made to the accuracy thereof and same is submitted to errors, omissions, change of price, rental or other conditions prior to sale, lease or financing or withdrawal without notice. No liability of any kind is to be imposed on the broker herein.

FLOOR PLAN - UNIT 3

7273 MURRAY DRIVE | STOCKTON | CA



All information furnished regarding property for sale, rental or financing is from sources deemed reliable, but no warranty or representation is made to the accuracy thereof and same is submitted to errors, omissions, change of price, rental or other conditions prior to sale, lease or financing or withdrawal without notice. No liability of any kind is to be imposed on the broker herein.

LOCATION MAP

7273 MURRAY DRIVE | STOCKTON | CA

