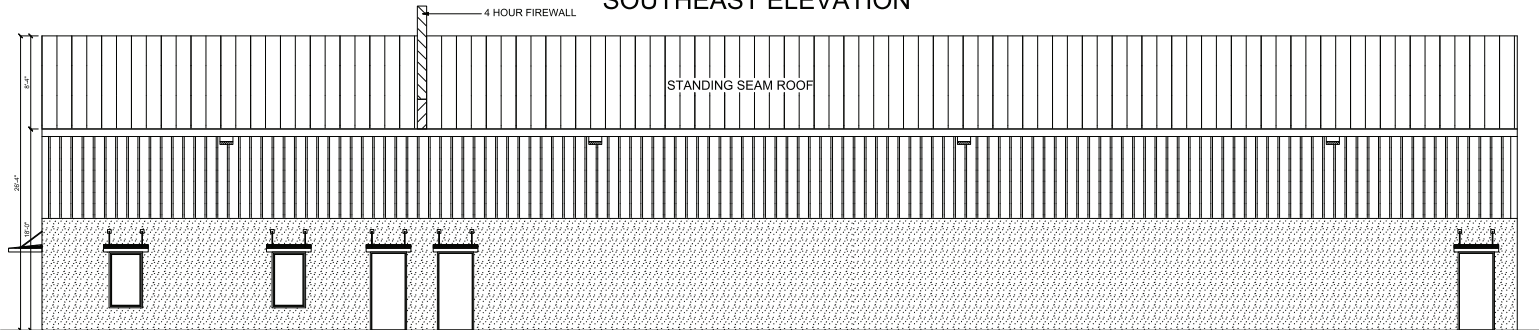
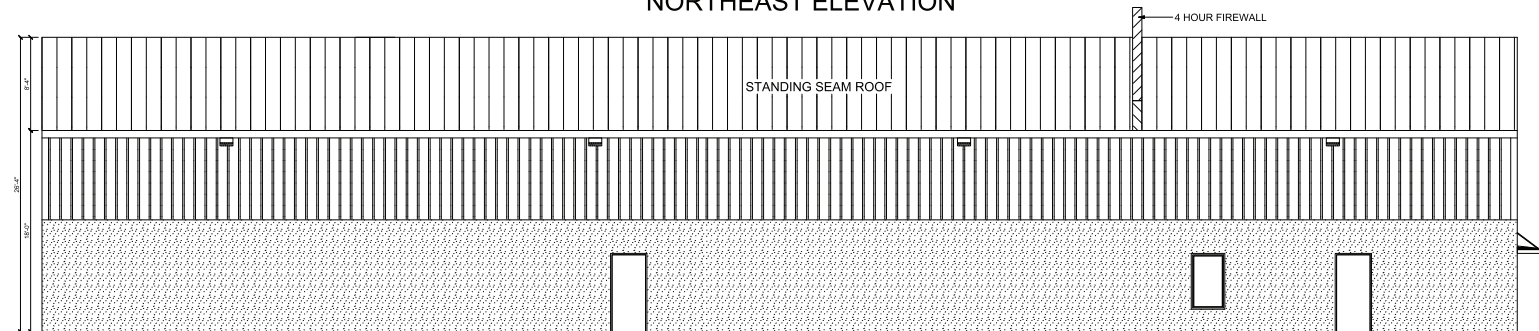


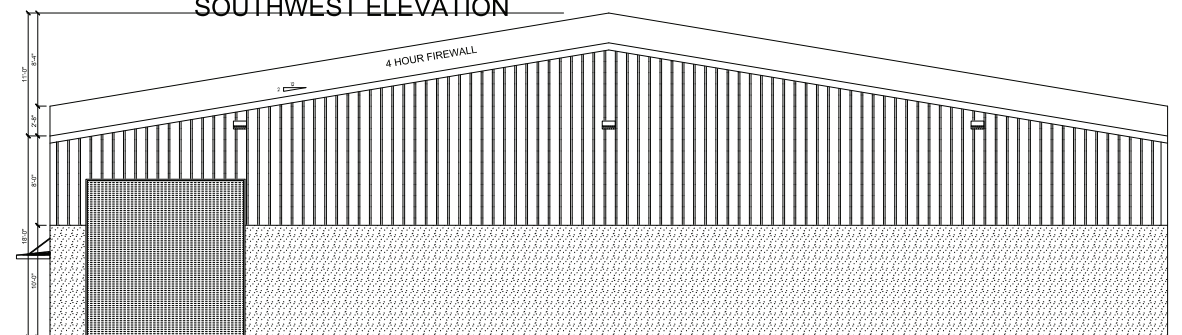
SOUTHEAST ELEVATION



NORTHEAST ELEVATION



SOUTHWEST ELEVATION



NORTHWEST ELEVATION

DATA SUMMARY

APPLICABLE CODES:
 2020 (7th EDITION) FLORIDA BUILDING CODE
 2020 (7th EDITION) FLORIDA MECHANICAL CODE
 2020 (7th EDITION) FLORIDA PLUMBING CODE
 2020 (7th EDITION) FLORIDA ACCESSIBILITY CODE
 2020 (7th EDITION) FLORIDA ENERGY CODE
 FLORIDA FIRE PREVENTION CODE
 2017 NEC

BUILDING USE: TYPE S1
 CONSTRUCTION TYPE II-B, NOT SPRINKLED
 TOTAL BLDG SPACE AREA: 13,200sf;
 WAREHOUSE AND OFFICES SEPARATED
 BY A 4 HOUR BLOCK FIRE WALL

OCCUPANT LOAD:
 WAREHOUSE: 9,800sf... 1,500... 19 OCCUPANTS
 OFFICES: 3,400sf... 1150... 22 OCCUPANTS

MIN. REQ. MEANS OF EGRESS WIDTH - 34"

MINIMUM INTERIOR FINISHES - ROOMS - CLASS "C"
 EXIT CORRIDORS - CLASS "B"

BUILDING RISK CATEGORY..... II
 BUILDING EXPOSURE CATEGORY..... C
 WIND SPEED IN MPH. Vult..... 150

INDEX

ELEVATIONS.....	A1
FLOOR PLAN.....	A2
LIFE SAFETY.....	A3
RISER-PANEL.....	E1
ELEC LIGHTING.....	E2
ELEC RECEPTACLES.....	E3
HVAC.....	H1
PLUMBING.....	P1
STRUCTURAL NOTES.....	S1
FOUNDATION DETAIL.....	S2
MASONRY CELL LAYOUT.....	S3
DETAILS.....	S4

☐ = 27 WATT LED WALPAK;
 (3) ON EACH END AND
 (4) ALONG EACH SIDE

36"x48" AWNING OVER EACH SINGLE
 WINDOW AND SINGLE MAN DOOR.
 36"x72" AWNING OVER ENTRY DOOR



THIS DOCUMENT HAS BEEN
 ELECTRONICALLY SIGNED AND
 SEALED BY P.A. WINGLER, P.E. ON
 USING A DIGITAL SIGNATURE
 PRINTED COPIES OF THIS DOCUMENT
 ARE NOT CONSIDERED SIGNED AND
 SEALED UNLESS THEY ARE
 VERIFIED ON ANY ELECTRONIC COPIES.

paul a. wingler p.e.
 P.E. 12350
 (941) 650-8953
 SARASOTA, FLORIDA 34241

PROJECT LOCATION:
MARK CAHILL INVESTMENTS LLC
LOT - 7
10415 TECHNOLOGY TERRACE
BRADENTON, FLORIDA

REVISIONS

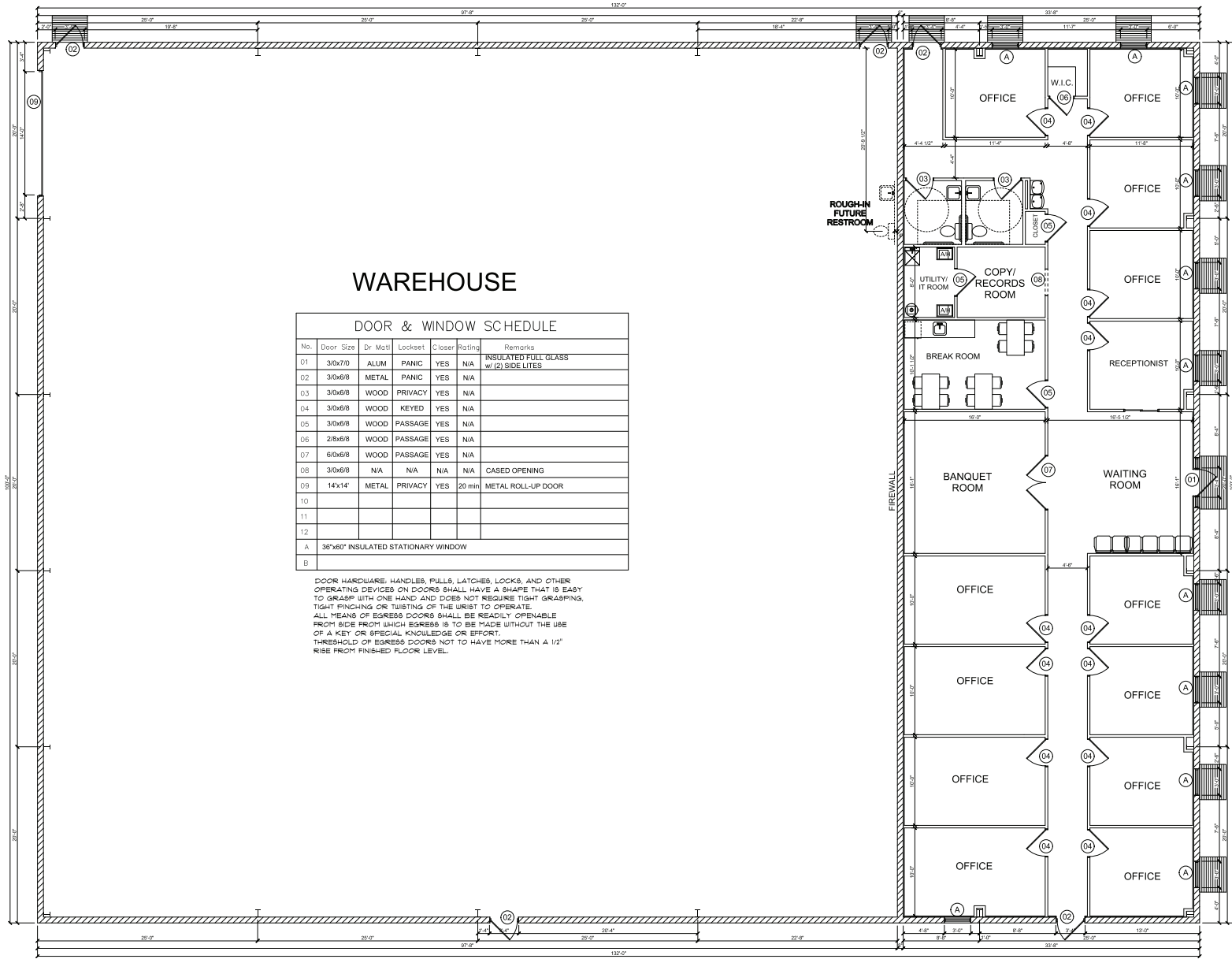
DRAWN BY:
 JRD

DATE:
 01/03/2022

Scale:
 3/16"=1'0"

JOB NUMBER

SHEET #
A1



WAREHOUSE

DOOR & WINDOW SCHEDULE

No.	Door Size	Dr Matl	Lockset	Closer	Rating	Remarks
01	30x70	ALUM	PANIC	YES	N/A	INSULATED FULL GLASS w/ (2) SIDE LITES
02	30x68	METAL	PANIC	YES	N/A	
03	30x68	WOOD	PRIVACY	YES	N/A	
04	30x68	WOOD	KEYED	YES	N/A	
05	30x68	WOOD	PASSAGE	YES	N/A	
06	28x68	WOOD	PASSAGE	YES	N/A	
07	60x68	WOOD	PASSAGE	YES	N/A	
08	30x68	N/A	N/A	N/A	N/A	CASED OPENING
09	14x14	METAL	PRIVACY	YES	20 min	METAL ROLL-UP DOOR
10						
11						
12						
A	36"x80" INSULATED STATIONARY WINDOW					
B						

DOOR HARDWARE: HANDLES, PULLS, LATCHES, LOCKS, AND OTHER OPERATING DEVICES ON DOORS SHALL HAVE A SHAPE THAT IS EASY TO GRASP WITH ONE HAND AND DOES NOT REQUIRE TIGHT GRASPING, TIGHT PINCHING OR TWISTING OF THE WRIST TO OPERATE. ALL MEANS OF EGRESS DOORS SHALL BE READILY OPENABLE FROM SIDE FROM WHICH EGRESS IS TO BE MADE WITHOUT THE USE OF A KEY OR SPECIAL KNOWLEDGE OR EFFORT. THRESHOLD OF EGRESS DOORS NOT TO HAVE MORE THAN A 1/2" RISE FROM FINISHED FLOOR LEVEL.

MAIN FLOOR LAYOUT

WAREHOUSE OFFICES

9800sf

3400sf

DO NOT SCALE DRAWINGS
GO WITH MEASUREMENTS

paul a. wingler p.e.
P.E. 12350
(941) 650-8953
SARASOTA, FLORIDA 34241

DRAWN BY:
JR. RABER DRAFTING, INC.
2710 KILGORE PLACE
SARASOTA, FLORIDA 34235
330-231-0771

PROJECT LOCATION:
MARK CAHILL INVESTMENTS LLC
LOT - 7
10415 TECHNOLOGY TERRACE
BRADENTON, FLORIDA

REVISIONS

DRAWN BY:
JRD

DATE:
01/03/2022

Scale:
3/16" = 1'0"

JOB NUMBER

SHEET #
A2