

**BERKSHIRE  
HATHAWAY**  
HOMESERVICES

UTAH  
PROPERTIES

COMMERCIAL DIVISION



## CENTER OF EXCELLENCE - CLASS A OFFICE SPACE AVAILABLE FOR LEASE

**CENTER OF EXCELLENCE** 1 VICTORY LANE | PARK CITY, UTAH

**FOR LEASE** \$36/SF/YR Full-Service

This is Class A office space available on the third floor of the Center of Excellence in Park City, Utah. One of the few class A buildings in Park City. Great space for an outdoor sports team or company, office user, or medical office user. Approximate available space is 4,493 SF. Full-service lease offered at \$36/PSF (excluding interior janitorial.) Contact Listing Agent for more information or to schedule a showing.

- AVAILABLE NOW.
- FULLY BUILT OUT CLASS A OFFICE SPACE.
- APPROX 4,493 RENTABLE SF AVAILABLE.
- OFFICE/ MEDICAL OFFICE.
- LARGE PARKING LOT.

# PROPERTY DETAILS / LOBBY

CENTER OF EXCELLENCE | 1 VICTORY LANE | PARK CITY, UTAH



# PROPERTY DETAILS / OFFICE SPACE

CENTER OF EXCELLENCE | 1 VICTORY LANE | PARK CITY, UTAH



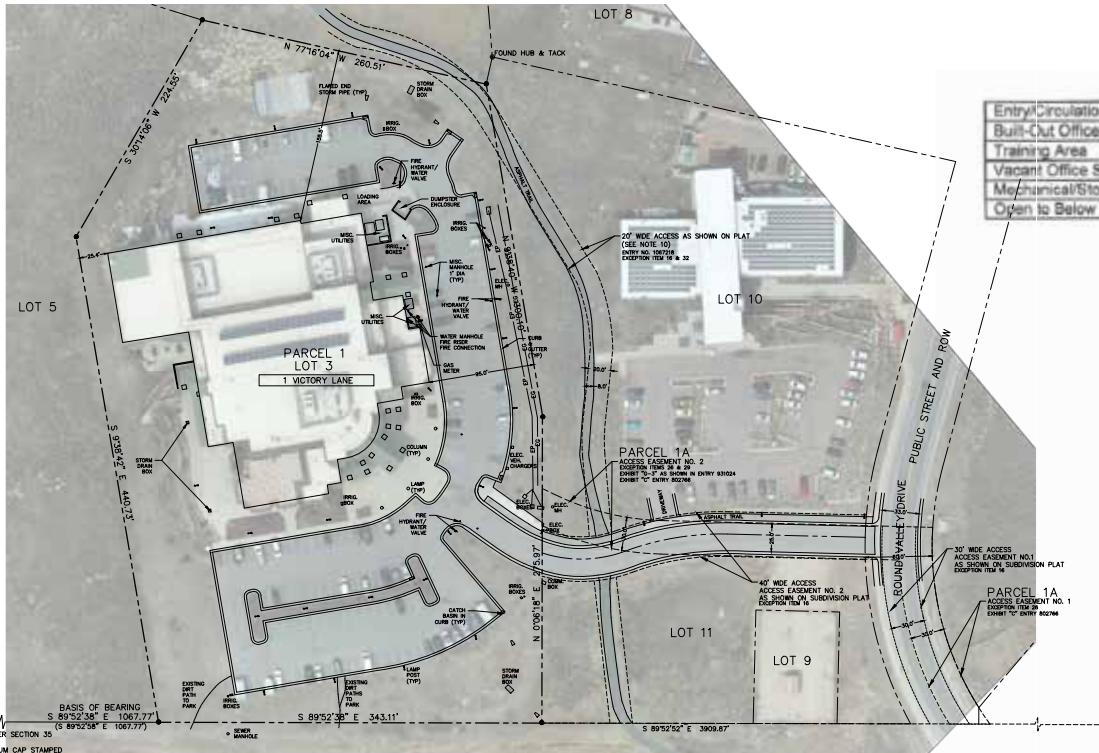
# PROPERTY DETAILS / EXTERIOR

CENTER OF EXCELLENCE | 1 VICTORY LANE | PARK CITY, UTAH

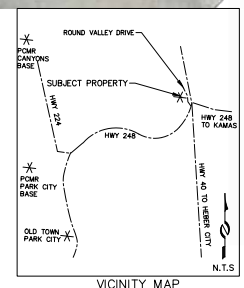
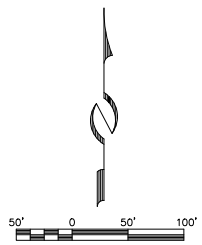


# SITE AND FLOORPLAN

CENTER OF EXCELLENCE | 1 VICTORY LANE | PARK CITY, UTAH



Entry/Circulation	Yellow
Built-Out Office	Pink
Training Area	Green
Vacant Office Shell	Orange
Mechanical/Storage	Purple
Open to Below	Blue





## CENTER OF EXCELLENCE

1 VICTORY LANE  
PARK CITY, UTAH

- Approximately 4,493 Rentable SF Available.
- Desirable Park City location with convenient highway access.
- Large parking lot dedicated to the building.
- Mountain and open space views.
- Easy access to Park City Trail system.
- To schedule a showing please call the listing agent.

i

**FOR LEASE**  
**\$36/SF/YR FULL-SERVICE**



TRAVIS PARTNERS



**JOHN TRAVIS**  
435 640-2972  
john@travispartnersutah.com  
www.bhhsutah.com/agent/john-travis

**BERKSHIRE HATHAWAY** | UTAH PROPERTIES  
HOMESERVICES

COMMERCIAL DIVISION