



Bank 5 Building

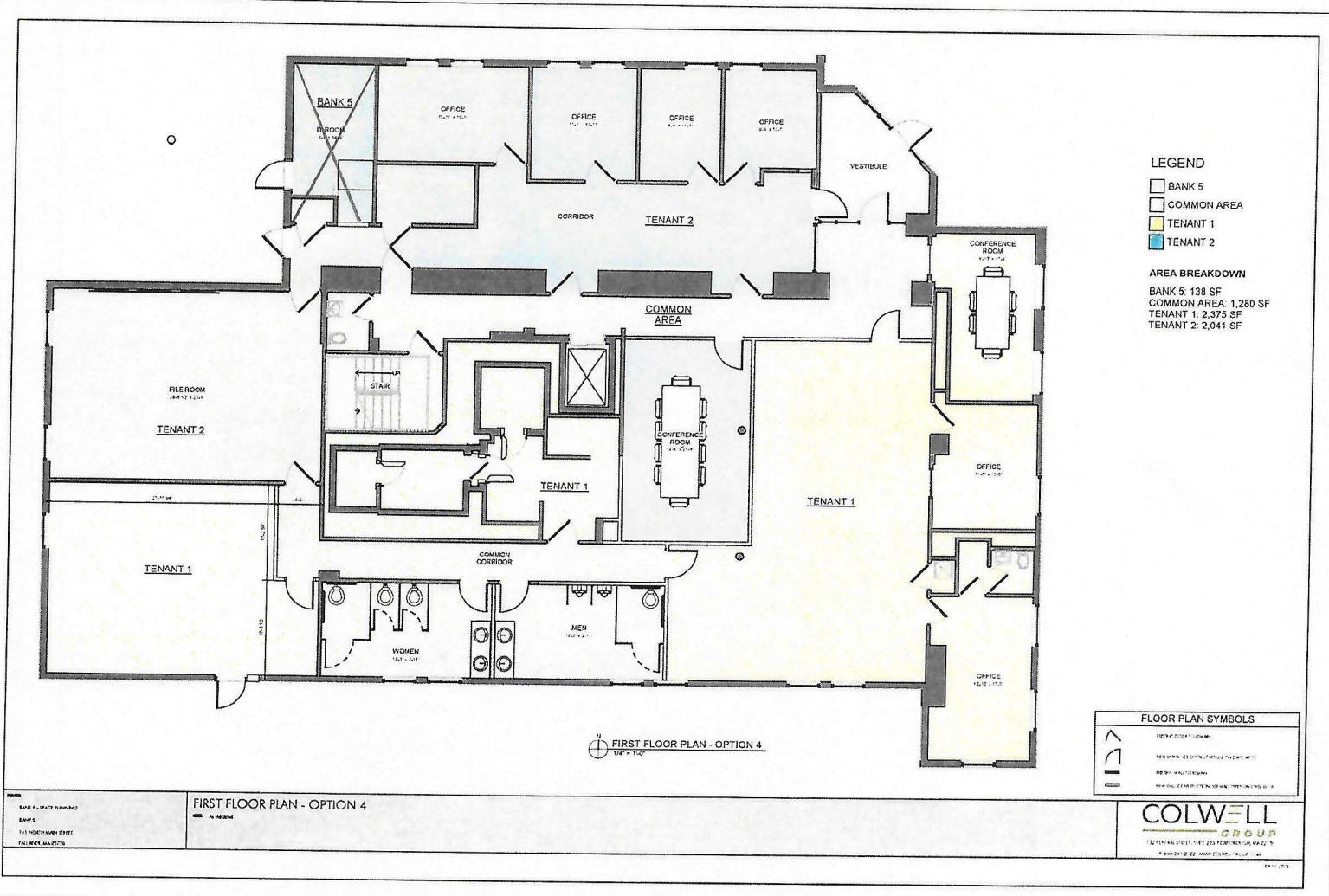
141 N Main St, Fall River, MA 02720

EQUITY
COMMERCIAL REAL ESTATE, INC.



Jim Sabra
Equity Commercial Real Estate, Inc.
82 Sanford Rd, Westport, MA 02790
jsabra@equityrealestateinc.com
(508) 951-7994

141 NORTH MAIN STREET AVAILABLE FIRST FLOOR SPACE +/-4,416 sf



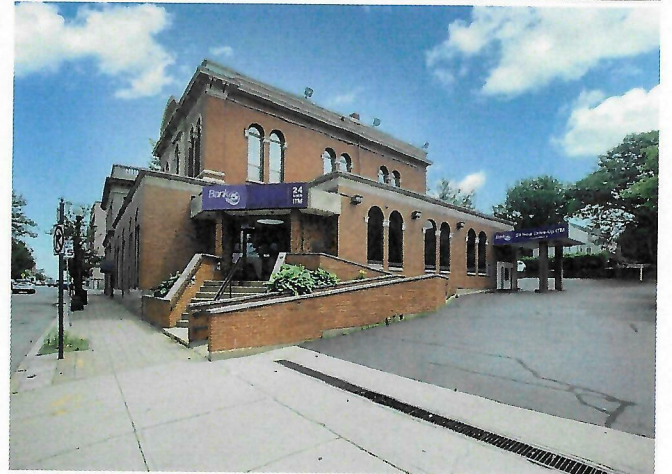


Bank 5 Building

\$16.00 /SF/YR

Professional Downtown office space available with off street parking, close to banks, restaurants, post office, and highways. Professionally managed....

- Central Downtown first floor location close to banks, restaurants, and Post Office.
- Professionally managed.
- Near public transit including the "T" and bus stops.
- Easy access to interstate 195, 79, and 24.



| | |
|-------------------------|------------------------|
| Rental Rate: | \$16.00 /SF/YR |
| Property Type: | Office |
| Property Subtype: | Medical |
| Building Class: | B |
| Rentable Building Area: | 7,354 SF |
| Year Built: | 1978 |
| Walk Score ®: | 92 (Walker's Paradise) |
| Transit Score ®: | 51 (Good Transit) |
| Rental Rate Mo: | \$1.33 /SF/MO |

1st Floor Ste Unit 1

1

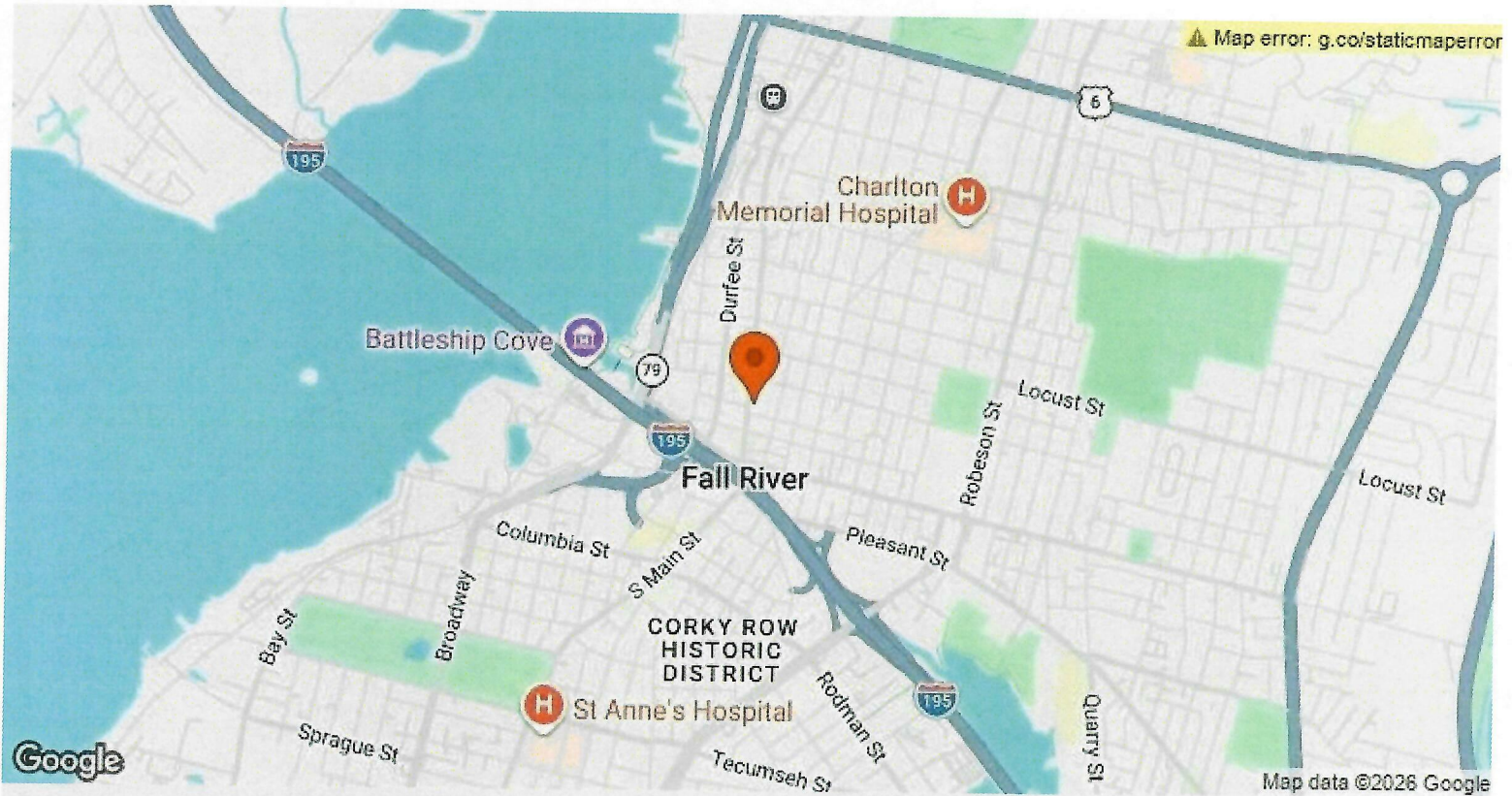
| | |
|-----------------|------------------|
| Space Available | 4,416 SF |
| Rental Rate | \$16.00 /SF/YR |
| Contiguous Area | 7,364 SF |
| Date Available | Now |
| Service Type | Triple Net (NNN) |
| Space Type | Relet |
| Space Use | Office |
| Lease Term | Negotiable |

Professional Downtown office space available with off street parking, close to banks, restaurants, post office, and highways. Professionally managed. Square footage to be verified before lease signing.

2nd Floor Ste Unit 2

2

| | |
|-----------------|------------------|
| Space Available | 2,948 SF |
| Rental Rate | \$16.00 /SF/YR |
| Contiguous Area | 7,364 SF |
| Date Available | March 04, 2026 |
| Service Type | Triple Net (NNN) |
| Built Out As | Standard Office |
| Space Type | Relet |
| Space Use | Office |
| Lease Term | Negotiable |



141 N Main St, Fall River, MA 02720

Professional Downtown office space available with off street parking, close to banks, restaurants, post office, and highways. Professionally managed.

Property Photos



photo (15)



photo (16)

Property Photos

