



FOR SALE | NEW BUILDING DELIVERED IN 2024

91-209 KUHELA STREET · KAPOLEI, HAWAII 96707



INDUSTRIAL
GROUP HAWAII

91-209 KUHELA STREET



PROPERTY DESCRIPTION

Brand new building for sale located in Kapolei. This building will be an ideally situated distribution facility to include 8 loading docks with dock high doors serviced by 2 drive in ramps with grade level roll-up doors. Building will include insulated ceilings with ceiling heights of 22' feet at the eaves and 26' feet at the peak, serviced by 40 parking stalls and 4 restrooms. Building mechanical will include high pile sprinkler system and electrical will include 800 amps at

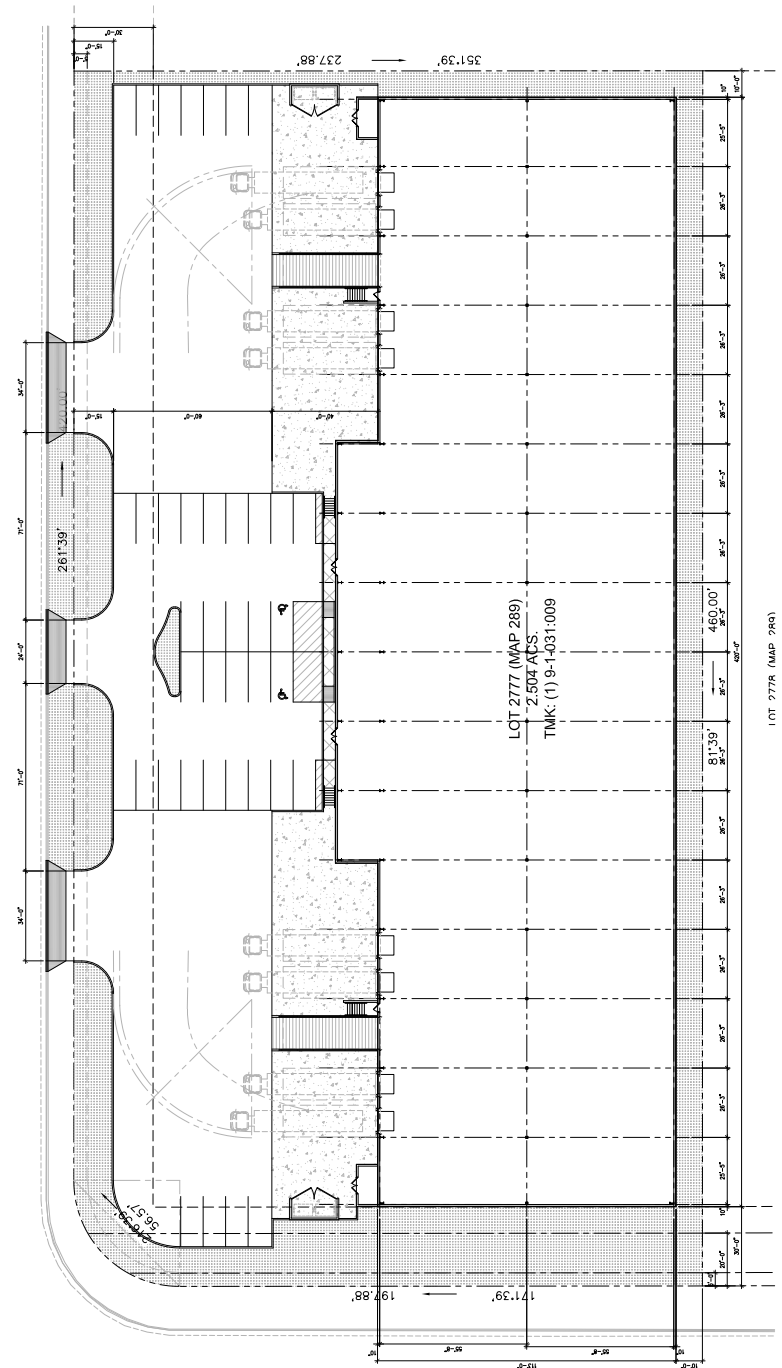
480-volt 3 phase service. This one is definitely being built well and you will not want to miss this opportunity.

Conveniently located in JCIP in Kapolei minutes from Kalaeloa Harbor, Costco Wholesale and Home Depot. The property is located just 30 minutes from the Central Business District of Honolulu and 20 minutes from the Daniel K. Inouye Airport.

PROPERTY DETAILS

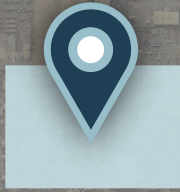
ASKING PRICE	Upon request
ADDRESS	91-209 Kuhela Street · Kapolei, Hawaii 96707
TMK	1-9-1-031-009
TENURE	Fee Simple
YEAR BUILT	2024 Delivery
ZONING	I-2 (Intensive Industrial)
LAND AREA	109,074 square feet
BUILDING AREA	50,483 square feet
PARKING / DOCKS	40 parking stalls 8 loading docks 2 truck ramps with grade level doors

DRIVING DISTANCES





91-209 KUHELA STREET



IG HI INDUSTRIAL
GROUP HAWAII

JAY K. ELICKER (B) CCIM, SIOR
Senior Vice President · RB 21204
808-218-8318 · jelicker@caahawaii.com

SEAN DO (S) CCIM
Vice President · RS 75040
808-387-6903 · sdo@caahawaii.com

KEVIN KO (S)
Associate · RS 82504
808-971-1986 · kko@caahawaii.com