

FOR LEASE

May Wah Building

254 East Pender
Vancouver, BC

Retail Units with Leasable Area from 2,062 s.f. to 6286 s.f.



Alex Yuen
Personal Real Estate Corporation
604.338.1800
alex.yuen@macdonaldcommercial.com

Macdonald
COMMERCIAL

member of
CORFAC
INTERNATIONAL

SALIENT DETAILS

ADDRESS

254, 260 & 262 East Pender Street, Vancouver, BC

ZONING

HA-1 Historical Area

LEGAL DESCRIPTION

LOT 30, BLOCK 16, PLAN VAP184, DISTRICT LOT 196, GROUP 1, NEW WESTMINSTER LAND DISTRICT, MAY WAH HOTEL

PID

015-664-040, 015-664-023, 015-664-066

LOT SIZE

9,150 SF

LEASABLE AREA

254 E Pender - 4,674 SF (Ground Floor, Mezzanine & Basement)

260 E Pender - 2,062 SF (Ground Floor)

262 E Pender - 6,286 SF (Ground Floor & Basement)

MONTHLY GROSS RENT

\$20.00 Gross per Square Foot

PROPERTY TAX

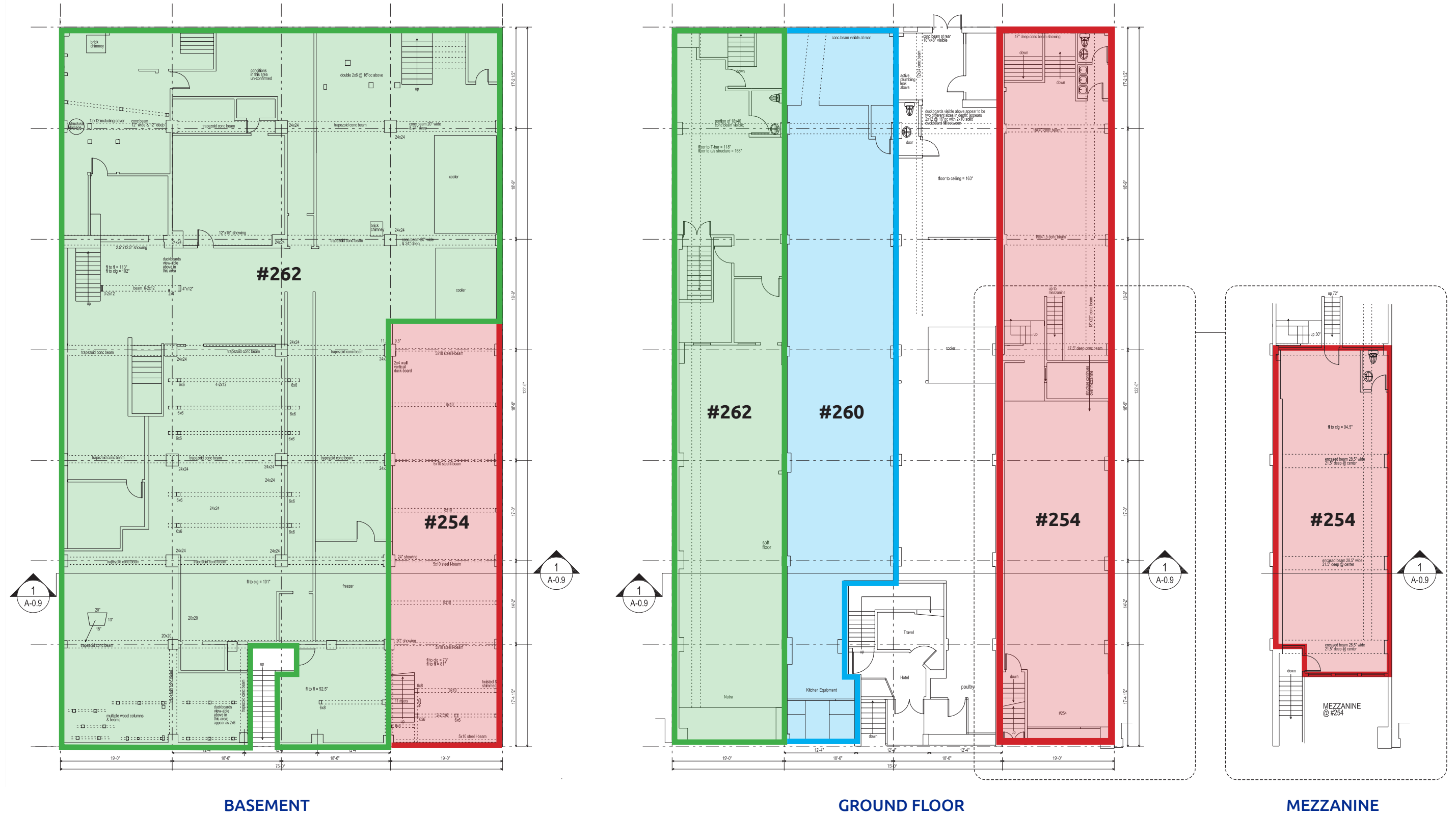
\$69,171.10 (2024)

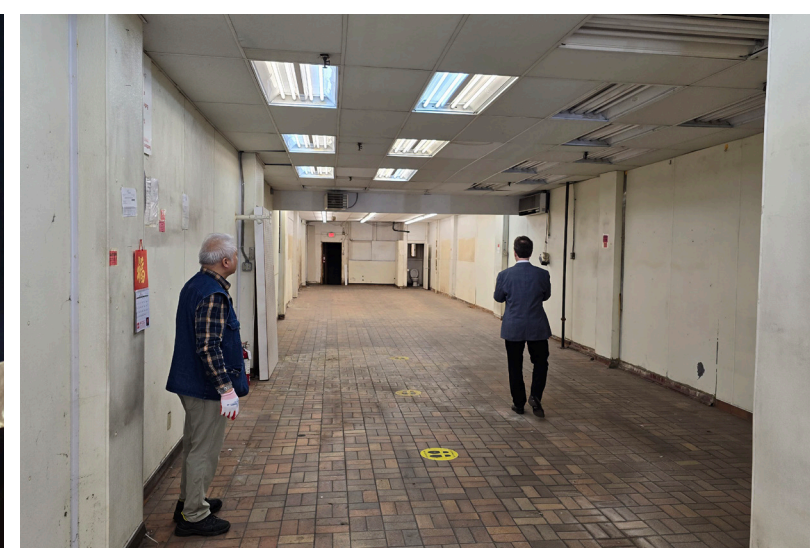
AVAILABILITY

Immediately



FLOOR PLAN





AMENITIES

SERVICES

- 1. RBC Royal Bank
- 2. Canada Post
- 3. CIBC
- 4. Vancity
- 5. Tim Hortons
- 6. BMO
- 7. Scotiabank
- 8. Vancouver Fire & Rescue
- 9. Rogers Arena
- 10. BC Place
- 11. Cique du Soleil
- 12. Vancouver Pacific Central

PARKS

- A. CRAB Park
- B. Chinese Cultural Center
- C. Andy Livingstone Park
- D. Creekside Park
- E. Trillium Park
- F. Strathcona Park

FOR MORE INFORMATION, PLEASE CONTACT:

Alex Yuen*

604.338.1800

Alex.Yuen@macdonaldcommercial.com

** Personal Real Estate Corporation*

Macdonald COMMERCIAL

Macdonald Commercial Real Estate Services Ltd.

Vancouver | 1827 W 5th Ave, Vancouver, BC
Surrey | #104 - 2429 152 St, Surrey, BC

www.macdonaldcommercial.com

Although this information has been received from sources deemed reliable, we assume no responsibility for its accuracy, and without offering advice, make this submission subject to prior sale or lease, change in price or terms and withdrawal without notice.