

# Whitman Plaza

330 W OREGON AVE, PHILADELPHIA, PA 19148

±1,920 - 11,754 SF of Retail and  
Pad Available for Lease

Join: *ShopRite* **ROSS DUNKIN'**  
**Burlington** **SKECHERS**



Leased by:



SCOTT BENSON

OFFICE 215.893.0300

DIRECT 215.282.0158

sbenson@metrocommercial.com

JONATHAN SPOERL

OFFICE 215.893.0300

DIRECT 215.282.0157

jspoerl@metrocommercial.com



# Market Aerial



The information and images contained herein are from sources deemed reliable. However, Metro Commercial Real Estate, Inc. makes no representation whatsoever as to their accuracy or authenticity. Images shown may be modified for illustrative purposes. Images may be out-of-date and not current. December 18, 2025 9:49 AM

# Whitman Plaza

330 W OREGON AVE, PHILADELPHIA, PA 19148



# Zoom Aerial



The information and images contained herein are from sources deemed reliable. However, Metro Commercial Real Estate, Inc. makes no representation whatsoever as to their accuracy or authenticity. Images shown may be modified for illustrative purposes. Images may be out-of-date and not current. December 18, 2025 9:49 AM

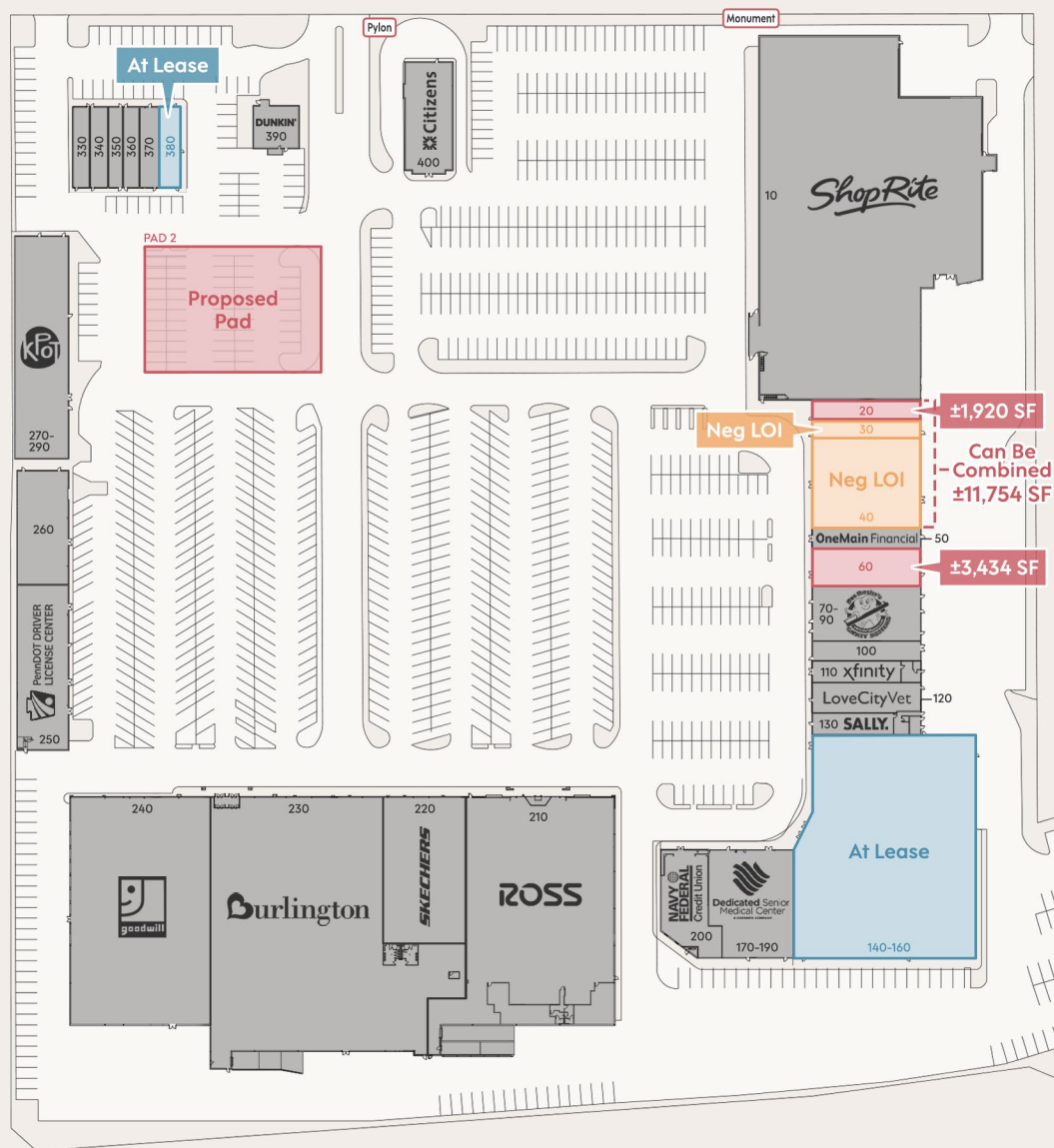
## Whitman Plaza

330 W OREGON AVE, PHILADELPHIA, PA 19148





# Site Plan



Key	
<span style="color: red;">■</span>	- Available
<span style="color: gray;">■</span>	- Leased
<span style="color: blue;">■</span>	- At Lease
<span style="color: orange;">■</span>	- Negotiating LOI

Space	Tenant
10	ShopRite
20	Available - 1,920 SF (19'1" x 100'6")
30	Neg LOI - 1,590 SF (15'10.5" x 100'6")
40	Neg LOI - 8,241 SF (82'1" x 100'6")
50	OneMain Financial
60	Available - 3,434 SF (34'2" x 100'6")
70-90	Cavity Busters
100	Payless Cleaners
110	Xfinity
120	Love City Vet
130	Sally Beauty
140-160	At Lease
170-190	Dedicated Senior Medical Center
200	Navy Federal Credit Union
210	Ross
220	Skechers
230	Burlington
240	Goodwill
250	PennDOT Driver License Center
260	Azcrom 4J Laundromat
270-290	KPOT Korean BBQ & Hot Pot
330	Mr. Wings
340	Subway
350	Harmony Nail Salon
360	Hair Cuttery
370	H&R Block
380	At Lease
390	Dunkin Donuts
400	Citizens Bank
	Proposed Pad Available

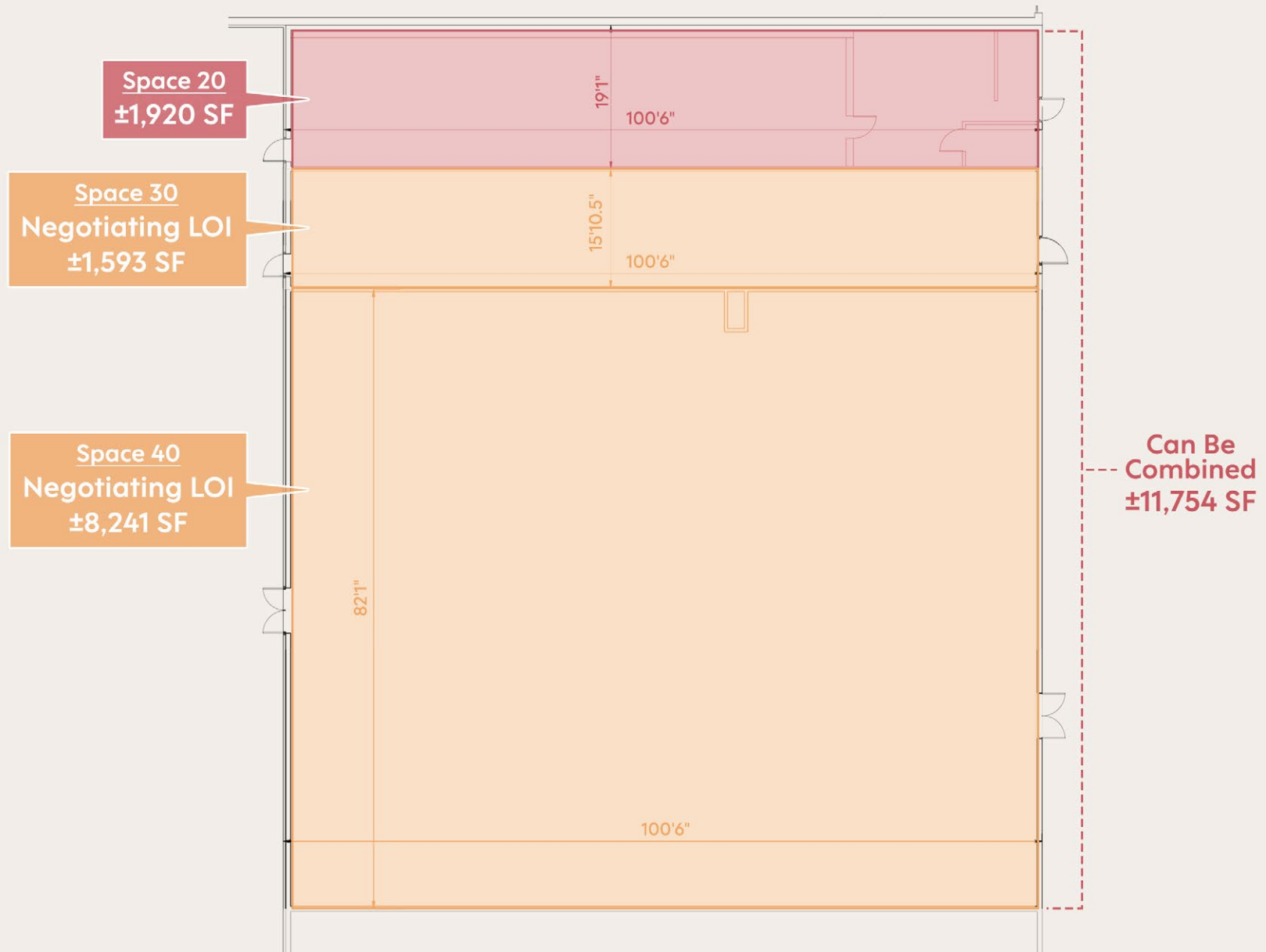
The information and images contained herein are from sources deemed reliable. However, Metro Commercial Real Estate, Inc. makes no representation whatsoever as to their accuracy or authenticity. Images shown may be modified for illustrative purposes. Images may be out-of-date and not current. December 18, 2025 9:49 AM

## Whitman Plaza

330 W OREGON AVE, PHILADELPHIA, PA 19148



## Floor Plan - Spaces 20, 30 & 40



The information and images contained herein are from sources deemed reliable. However, Metro Commercial Real Estate, Inc. makes no representation whatsoever as to their accuracy or authenticity. Images shown may be modified for illustrative purposes. Images may be out-of-date and not current. December 18, 2025 9:49 AM

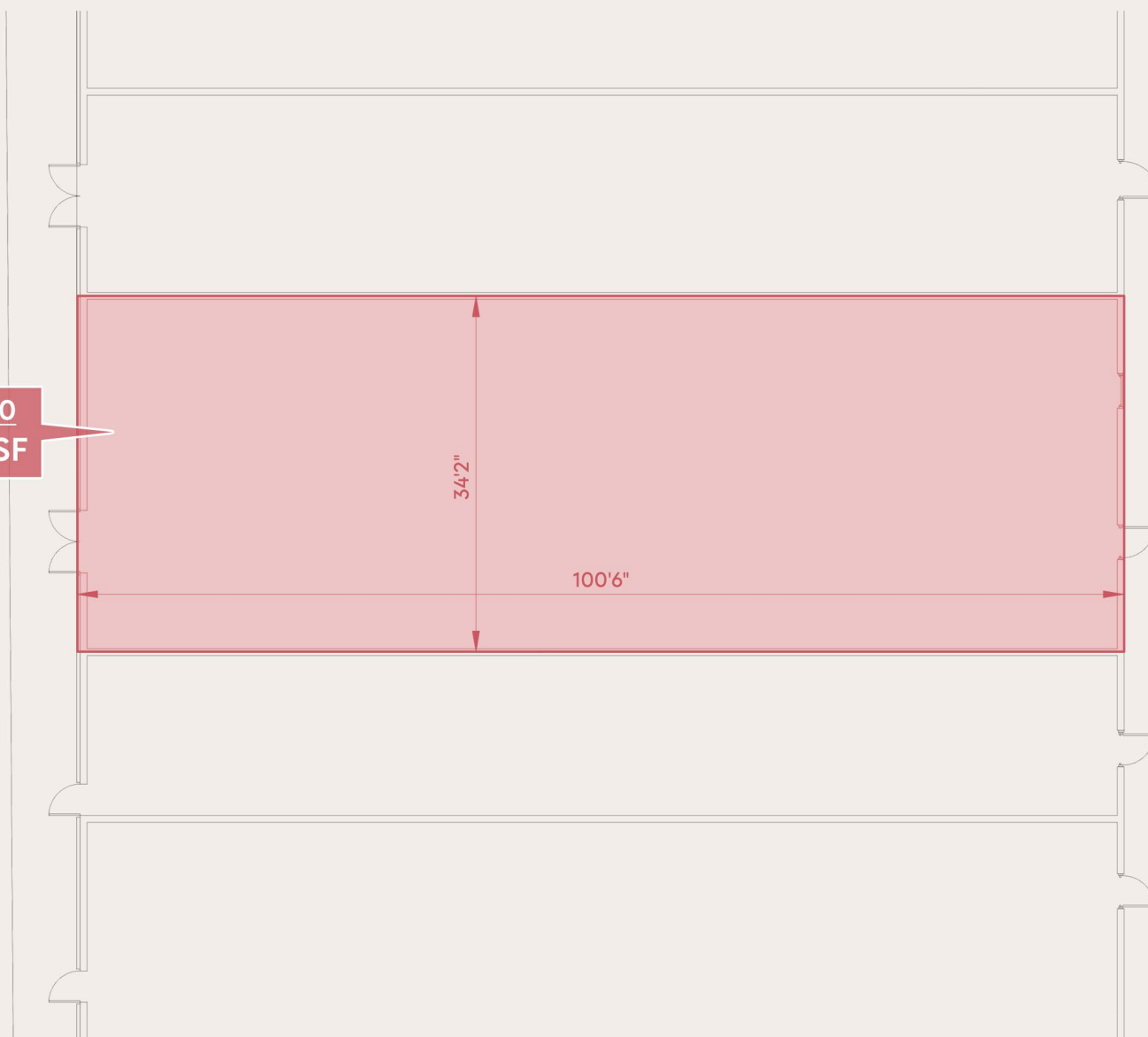
# Whitman Plaza

330 W OREGON AVE, PHILADELPHIA, PA 19148



## Floor Plan - Space 60

Space 60  
±3,434 SF



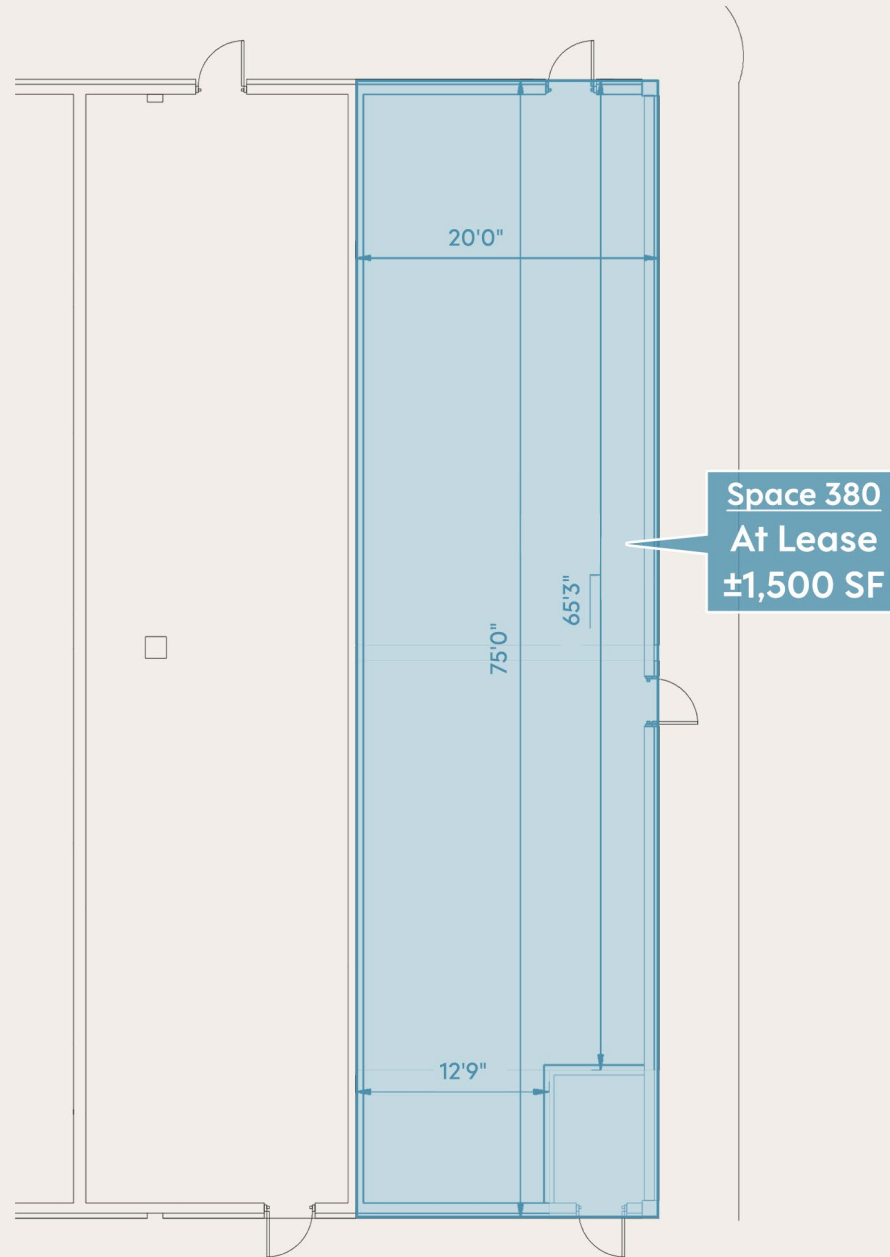
The information and images contained herein are from sources deemed reliable. However, Metro Commercial Real Estate, Inc. makes no representation whatsoever as to their accuracy or authenticity. Images shown may be modified for illustrative purposes. Images may be out-of-date and not current. December 18, 2025 9:49 AM

# Whitman Plaza

330 W OREGON AVE, PHILADELPHIA, PA 19148



## Floor Plan - Space 380



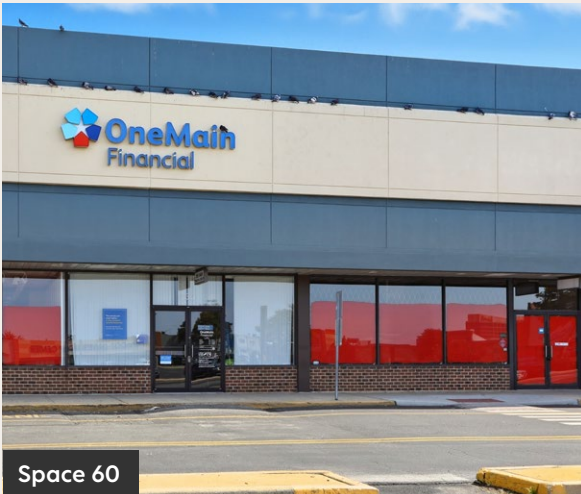
The information and images contained herein are from sources deemed reliable. However, Metro Commercial Real Estate, Inc. makes no representation whatsoever as to their accuracy or authenticity. Images shown may be modified for illustrative purposes. Images may be out-of-date and not current. December 18, 2025 9:49 AM

# Whitman Plaza

330 W OREGON AVE, PHILADELPHIA, PA 19148



## Property Photos - Available Spaces



The information and images contained herein are from sources deemed reliable. However, Metro Commercial Real Estate, Inc. makes no representation whatsoever as to their accuracy or authenticity. Images shown may be modified for illustrative purposes. Images may be out-of-date and not current. December 18, 2025 9:49 AM



## Property Photos - Signage



The information and images contained herein are from sources deemed reliable. However, Metro Commercial Real Estate, Inc. makes no representation whatsoever as to their accuracy or authenticity. Images shown may be modified for illustrative purposes. Images may be out-of-date and not current. December 18, 2025 9:49 AM

# Whitman Plaza

330 W OREGON AVE, PHILADELPHIA, PA 19148



## Property Photos - Existing Tenants



The information and images contained herein are from sources deemed reliable. However, Metro Commercial Real Estate, Inc. makes no representation whatsoever as to their accuracy or authenticity. Images shown may be modified for illustrative purposes. Images may be out-of-date and not current. December 18, 2025 9:49 AM





## Property Photos - Existing Tenants



The information and images contained herein are from sources deemed reliable. However, Metro Commercial Real Estate, Inc. makes no representation whatsoever as to their accuracy or authenticity. Images shown may be modified for illustrative purposes. Images may be out-of-date and not current. December 18, 2025 9:49 AM





# Whitman Plaza

330 W OREGON AVE  
PHILADELPHIA, PA 19148

Contact:

SCOTT BENSON

**OFFICE** 215.893.0300  
**DIRECT** 215.282.0158  
sbenson@metrocommercial.com

JONATHAN SPOERL

**OFFICE** 215.893.0300  
**DIRECT** 215.282.0157  
jspierl@metrocommercial.com

