

LONE PEAK CENTER 7



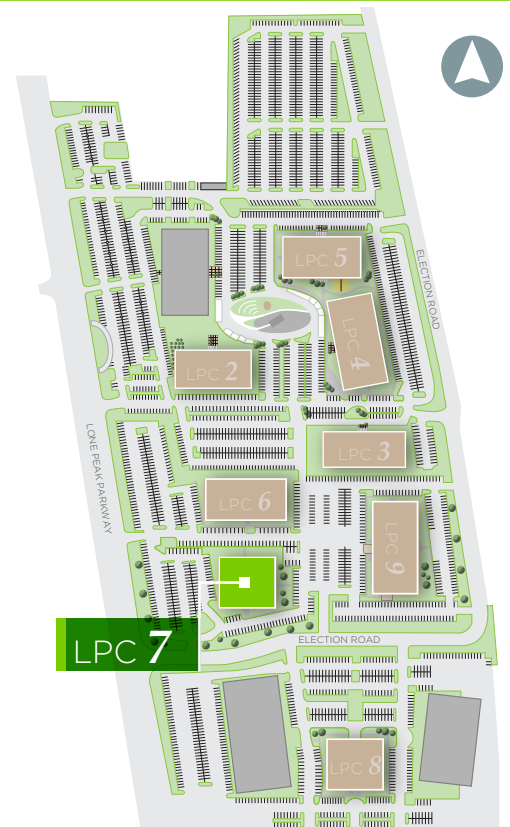
180 WEST ELECTION ROAD | SALT LAKE CITY, UTAH

BUILDING FEATURES

- 50,767 RSF
- Full floor opportunity (25,255 RSF)
- 34,366 RSF immediately available

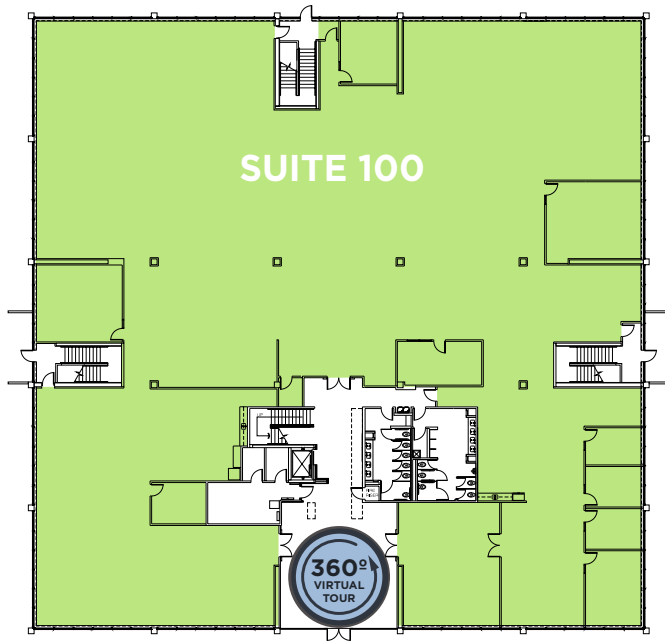


MAIER SIEBEL BABER



LONE PEAK CENTER 7

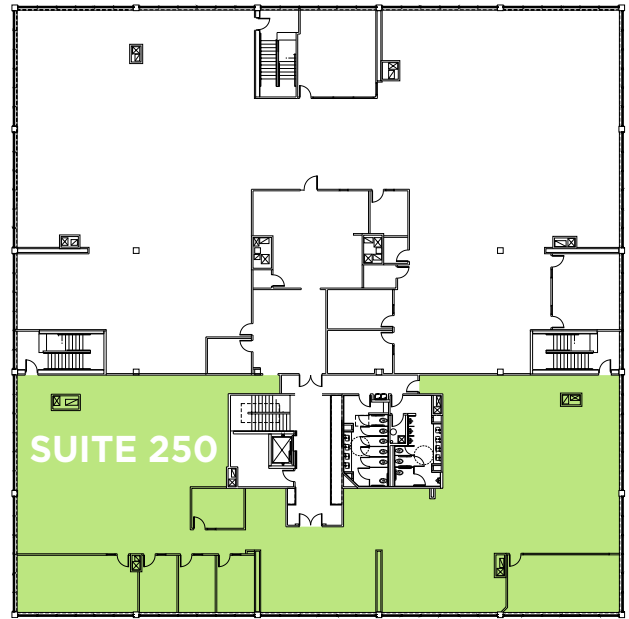
FIRST FLOOR



SUITE 100: 25,255 RSF



SECOND FLOOR



SUITE 250: 9,111 RSF



FOR LEASING INFORMATION, PLEASE CONTACT:

DANA BAIRD, CCIM
Executive Managing Director
(801) 303 5526
dana.baird@cushwake.com

MIKE RICHMOND
Executive Managing Director
(801) 303 5434
mike.richmond@cushwake.com

 **CUSHMAN &
WAKEFIELD**
MAIER SIEBEL BABER