

FOR SUBLEASE - 13,013 SF



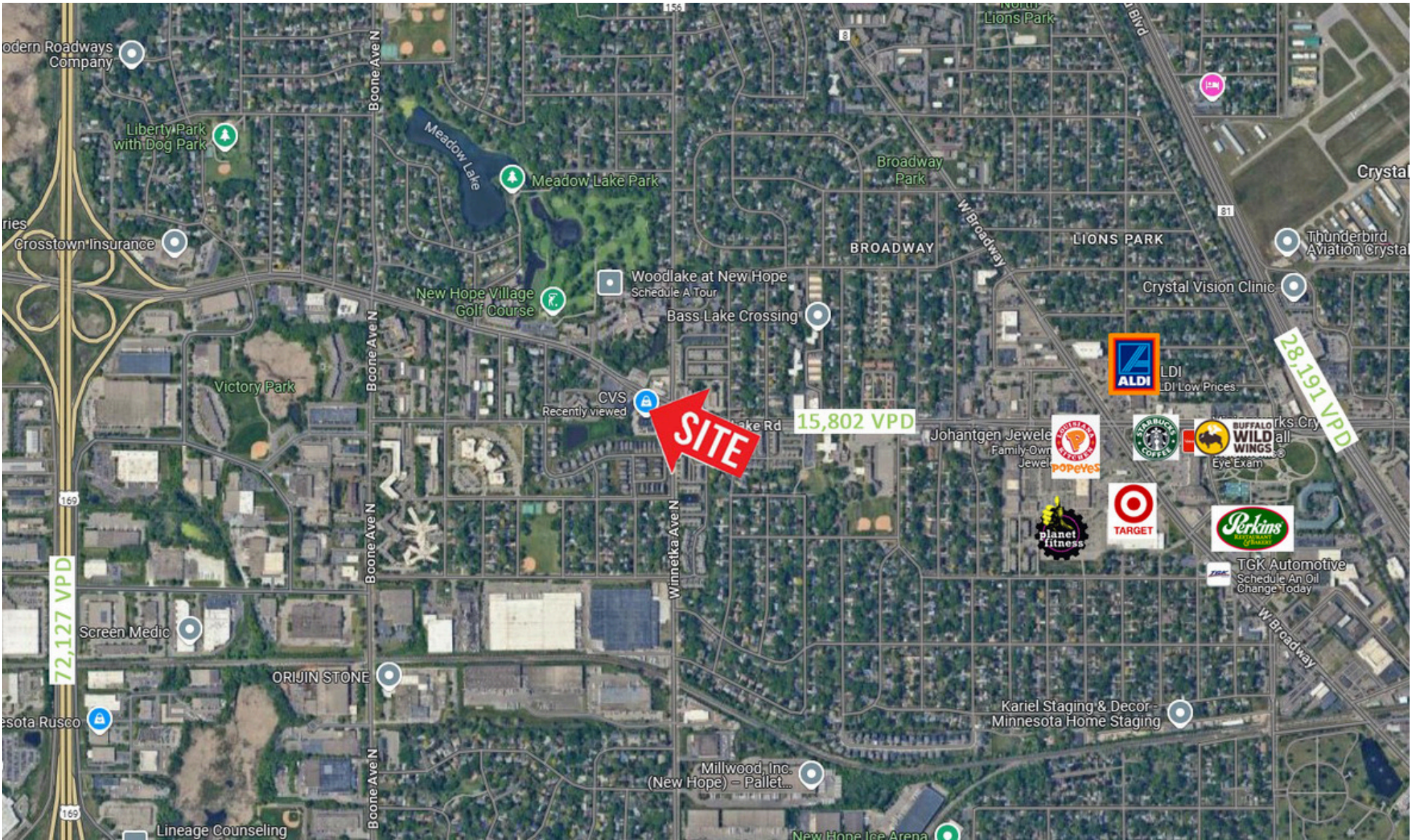
CVS PHARMACY

7901 BASS LAKE RD, NEW HOPE, MN 55428

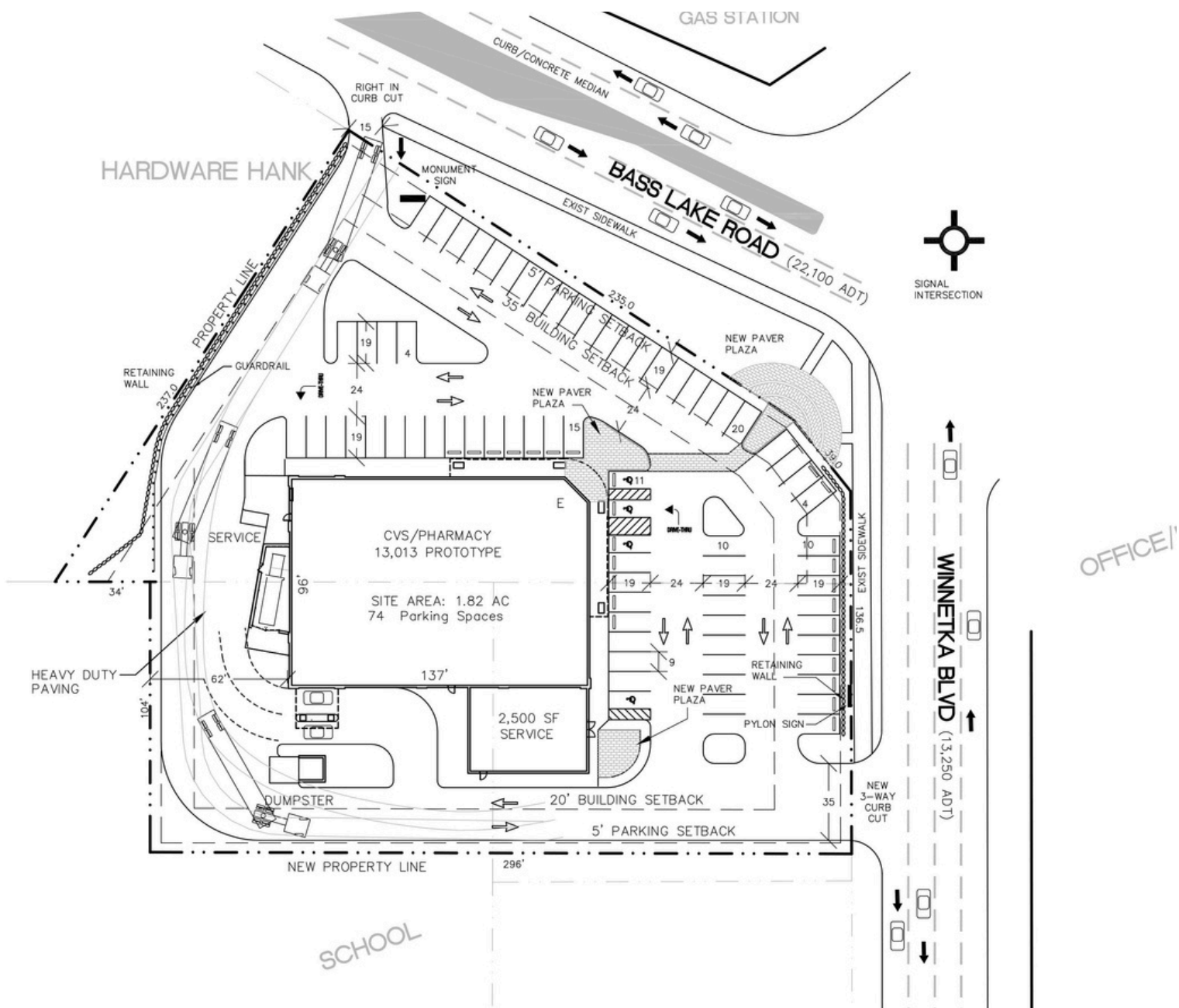
Bloom Commercial Real Estate
800 LaSalle Avenue | Suite 1250
Minneapolis, MN 55402
www.bloomcommercial.com



AERIAL VIEW



SITE PLAN



BLOOM COMMERCIAL
REAL ESTATE

PROPERTY HIGHLIGHTS

- Rare opportunity on busy Corner
- Freestanding Building with Pylon sign at Signalized corner
- Building very well cared for
- Area Tenants include Super Target; Aldi; Planet Fitness

DEMOGRAPHICS

Radius	1 Mile	3 Miles	5 Miles
POPULATION	14,350	100,513	265,823
MEDIAN HH INCOME	\$76,311	\$89,002	\$98,248

Traffic Counts

Winnetka Ave	9551 VPD
Bass Lake Rd	15802 VPD



FOR MORE INFORMATION:

Josh Bloom

651.207.3157 (text or call)

josh@bloomcommercial.com



BLOOM COMMERCIAL
REAL ESTATE