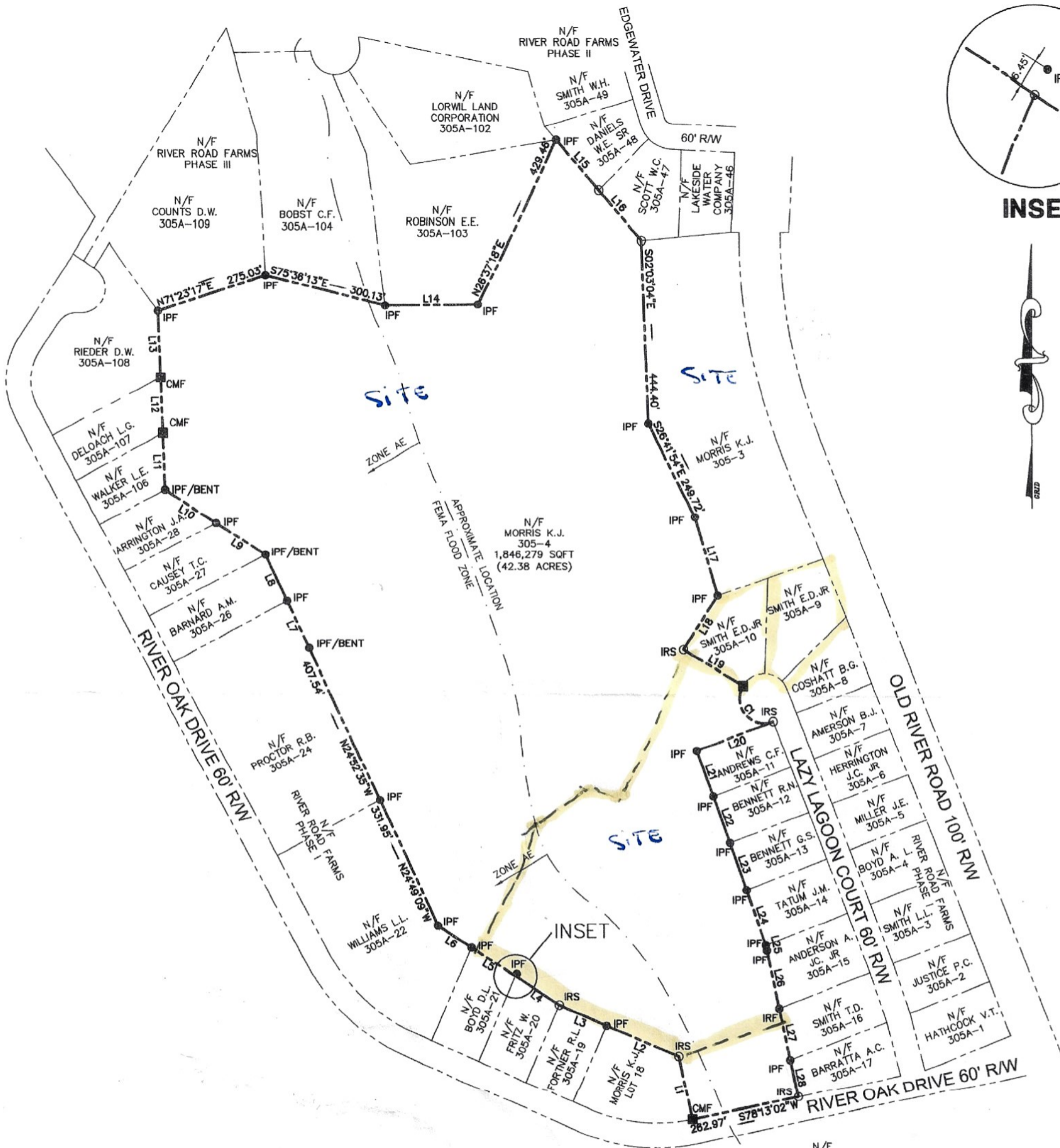


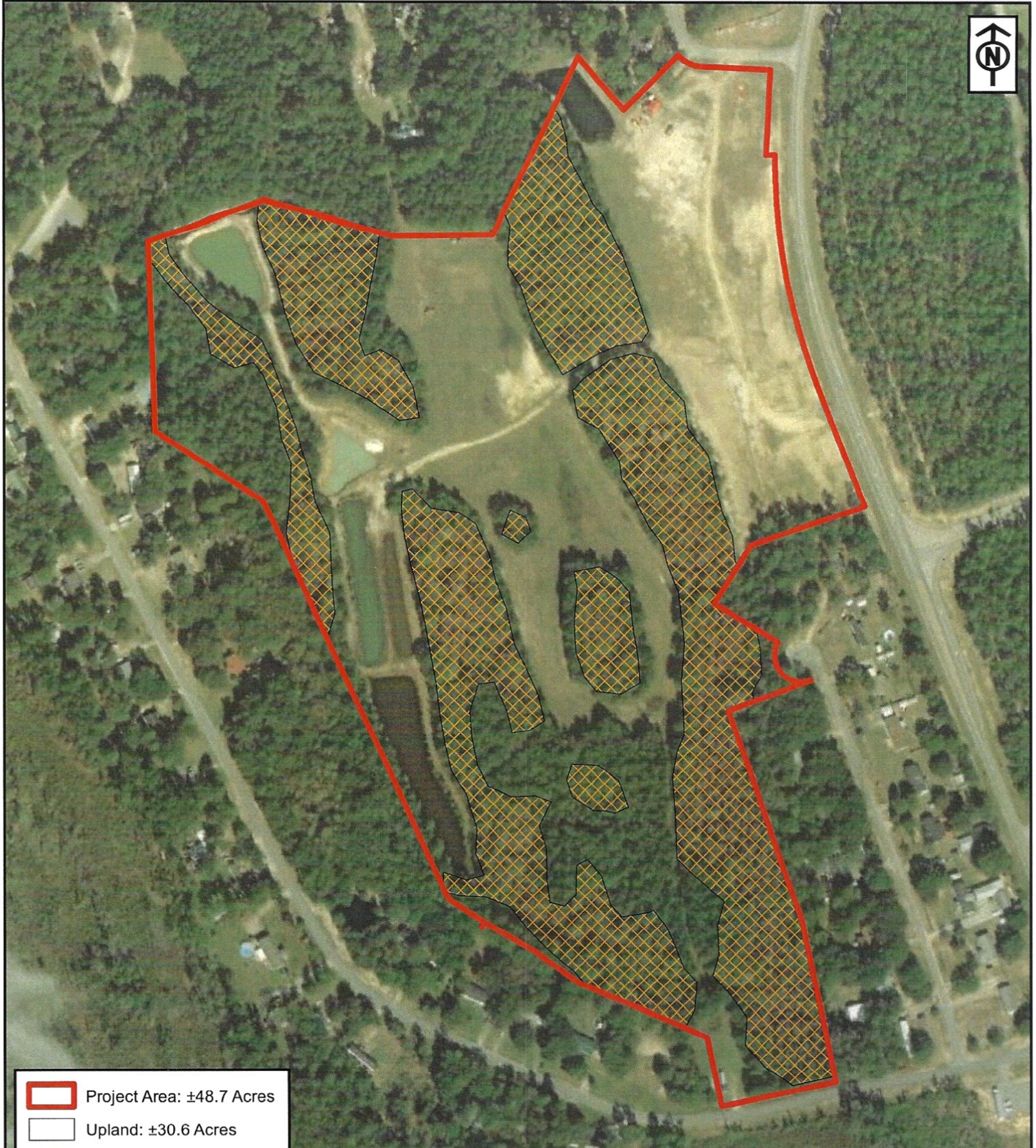
INSET




REFERENCES:

PB C	PAGE	72 B1
PB A	PAGE	375E
PB A	PAGE	219F
PR A	PAGE	996R

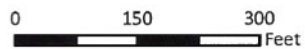
N/F STRICKLAND G. W. 305-1



 Project Area: ±48.7 Acres

 Upland: ±30.6 Acres

 Wetland ±18.1 Acres



NOTE: THIS SKETCH REPRESENTS AN APPROXIMATION OF THE LIMITS OF AQUATIC RESOURCES DELINEATED WITHIN THE PROJECT SITE. THE BOUNDARIES OF THE WETLANDS AND/OR STREAMS HAVE NOT BEEN FORMALLY SURVEYED OR FIELD VERIFIED BY THE U.S. ARMY CORPS OF ENGINEERS. RLC RECOMMENDS THAT THE DELINEATED BOUNDARIES BE SURVEYED BY A REGISTERED LAND SURVEYOR AND VERIFIED PRIOR TO PURCHASE OF THE PROPERTY OR INITIATION OF ANY LAND DISTURBING ACTIVITIES.

RLC Project No.:	08-078.2
Figure No.:	1
Prepared By:	ZM
Sketch Date:	5/25/2022
Map Scale:	1 inch = 300 feet

**Morris Property
Old River Road**
Effingham County, Georgia

Wetland Exhibit
Prepared For: EMC Engineering

RLC
RESOURCE+LAND
CONSULTANTS
41 Park of Commerce Way, Ste. 101
Savannah, Georgia 31405
912.443.5896 www.rlc.com