



For Sublease

1188 W Georgia Street
Vancouver

Aaron Ulinder

Senior Vice President
CBRE Limited | Office Properties
+1 604 662 5126
aaron.ulinder@cbre.com

CBRE

For Sublease

Improved as a show suite by the Landlord in 2023

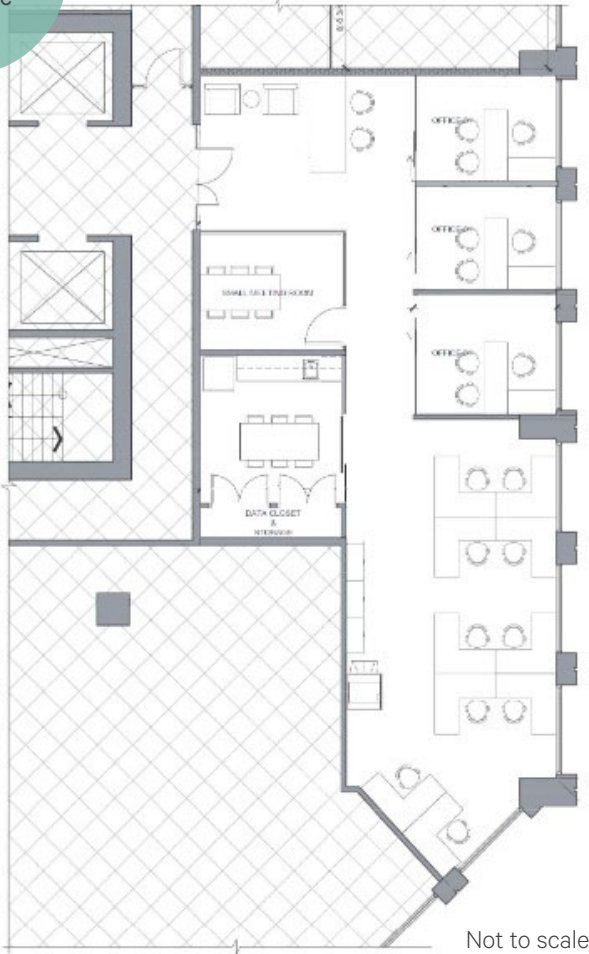
#950 - 1188 W Georgia Street , Vancouver



Suite Details

- elevator exposure
- three perimeter offices
- one internal meeting room
- open area can accommodate up to ten workstations
- good size kitchen

360° Tour
click here



Property Details

Premises	Suite #950
Area Available	1,751 SF
Asking Rate	Contact Listing Agent
Op. Costs/Taxes	\$25.60 PSF (2024 est)
Availability	30 - 60 days notice
Expiry Date	October 30, 2028 (follow on term negotiable)



Building Amenities

Fully equipped exercise and weight room with men's and women's change rooms, lockers and showers, and meeting/training room.



For Sublease

Improved as a show suite by the Landlord in 2023

Two blocks from Burrard Skytrain Station and Close proximity to Robson Street shops, restaurants and services.



Contact Agent

Aaron Ulinder

Senior Vice President
CBRE Limited | Office Properties
+1 604 662 5126
aaron.ulinder@cbre.com

CBRE

CBRE Limited
1021 West Hastings Street #2500 | Vancouver, BC
www.cbre.ca

This disclaimer shall apply to CBRE Limited, Real Estate Brokerage, and to all other divisions of the Corporation; to include all employees and independent contractors ("CBRE"). The information set out herein, including, without limitation, any projections, images, opinions, assumptions and estimates obtained from third parties (the "Information") has not been verified by CBRE, and CBRE does not represent, warrant or guarantee the accuracy, correctness and completeness of the Information. CBRE does not accept or assume any responsibility or liability, direct or consequential, for the Information or the recipient's reliance upon the Information. The recipient of the Information should take such steps as the recipient may deem necessary to verify the Information prior to placing any reliance upon the Information. The Information may change and any property described in the Information may be withdrawn from the market at any time without notice or obligation to the recipient from CBRE. CBRE and the CBRE logo are the service marks of CBRE Limited and/or its affiliated or related companies in other countries. All other marks displayed on this document are the property of their respective owners. All Rights Reserved.

Mapping Sources: Canadian Mapping Services canadamapping@cbre.com; DMTI Spatial, Environics Analytics, Microsoft Bing, Google Earth.