



FOR
LEASE



BROADWAY COMMONS

Available Office Space: 45,324 RSF

225 SW Broadway, Portland, OR 97205

The Broadway Commons Building is situated in the heart of Portland's central business district, just a few blocks away from the Pearl District. Nearby amenities including retail, lodging, dining, coffee shops, bars and pubs, entertainment, parks, and food carts.

JEFF FALCONER, SIOR

503-542-4346

jeff@capacitycommercial.com

MCCOY DOERRIE, SIOR

503-523-7751

mccoy@capacitycommercial.com



PROPERTY DETAILS



PROPERTY DETAILS & AMENITIES

Total Available SF	3,396 - 16,132 SF
Asking Rate	\$24.50/ SF Full Service
Year Built	1906
Parking	0.50:1,000 SF parking ratio
Term	Negotiable
Rooftop Deck	Yes
Fitness Center	Yes
Leases of 4+ years may qualify for the recently enacted Portland Business License Tax Rebate	



JEFF FALCONER, SIOR

503-542-4346

jeff@capacitycommercial.com

MCCOY DOERRIE, SIOR

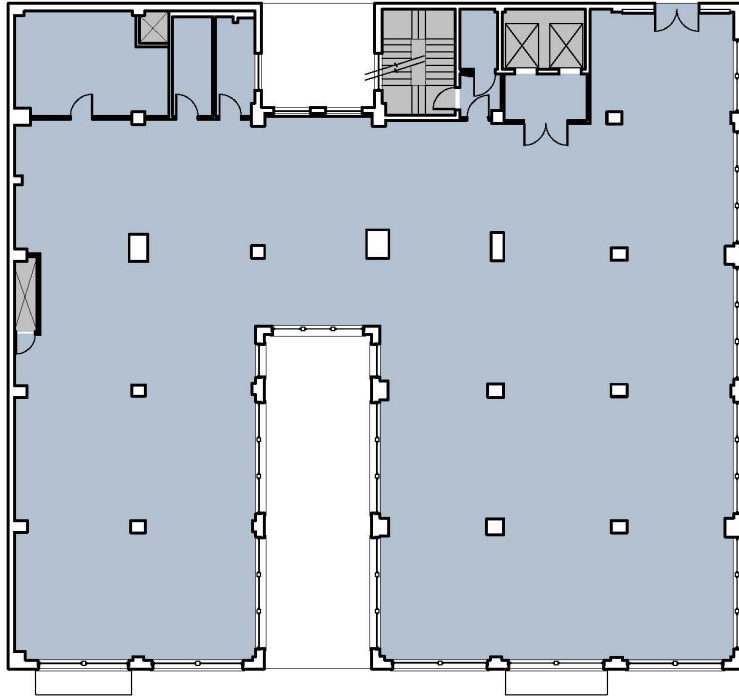
503-523-7751

mccoy@capacitycommercial.com

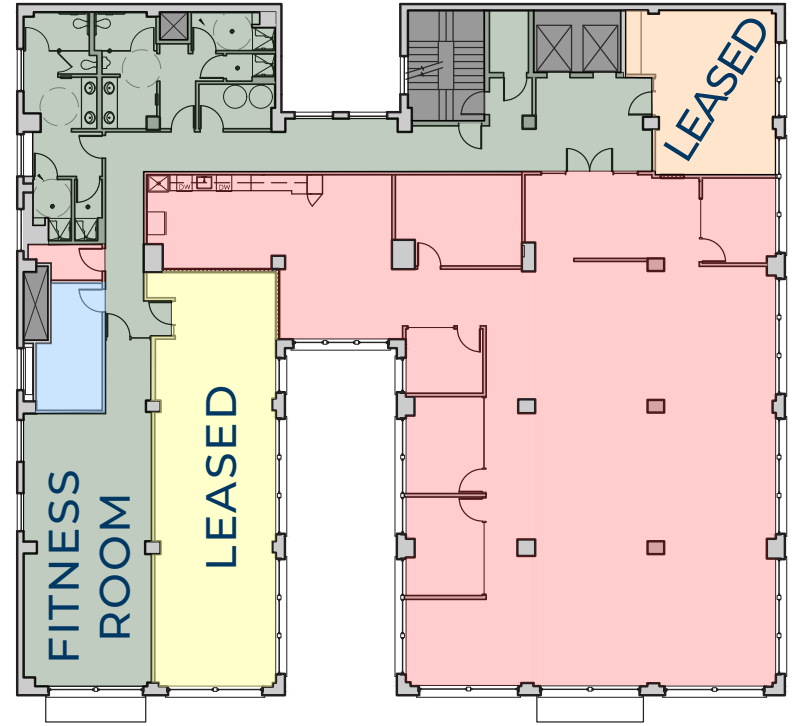


FLOOR
PLANS

2ND FLOOR 8,360 RSF



3RD FLOOR 4,376 RSF



5TH FLOOR 3,396 TO 8,383 RSF

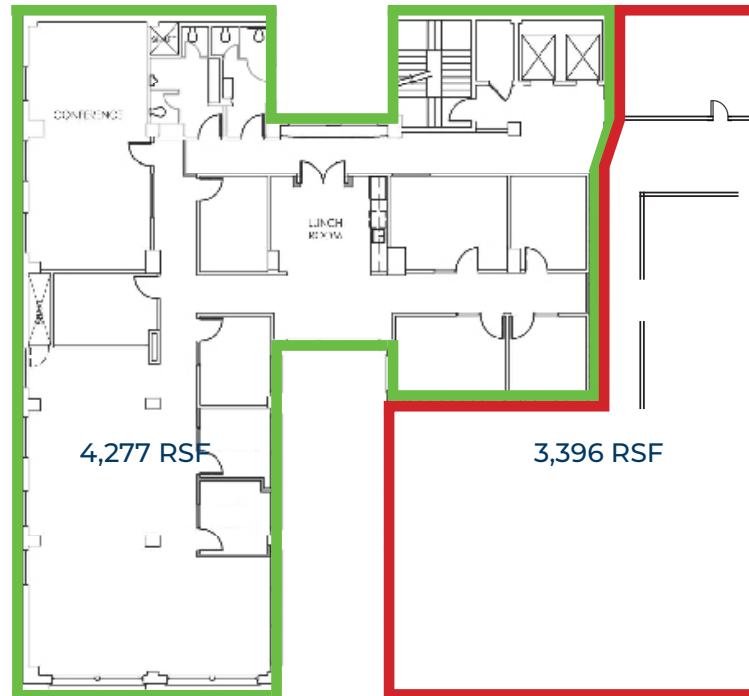




IMAGE
LIBRARY

