

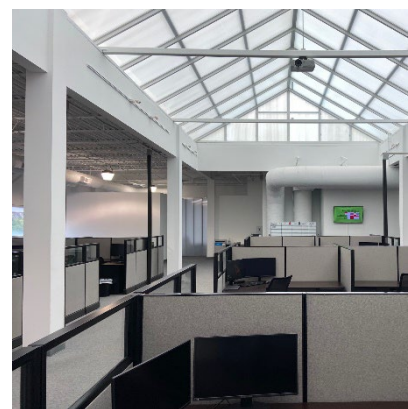
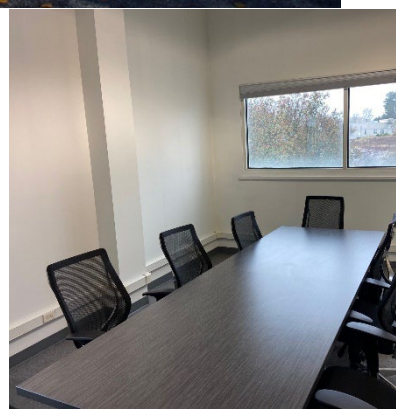
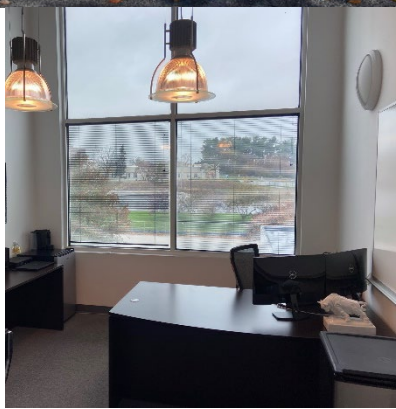


651 Park Avenue

King of Prussia, PA

Sublease Available

- RBA 21,199 SF
- 5,000 SF available for sublease
- Term thru 12/07/2023
- \$19.75/SF + E
- 2.3 acres
- Located in the East Montgomery County Industrial submarket
- Perfectly situated on the corner of First and Park Avenue
- Completely renovated with an additional elevator and sky roof
- 31 free surface spaces are available (1.35/1,000 SF)





651 Park Avenue

King of Prussia, PA

IMMEDIATE PROXIMITY TO A MULTITUDE OF AMENITIES



SITE PLAN



Scott Williams
Managing Director
+1 610 249 2259
scotta.williams@jll.com



Jones Lang LaSalle Brokerage, Inc. | 500 E. Swedesford Road, Suite 260, Wayne, PA 19087 | +1 610 249 2255

Although information has been obtained from sources deemed reliable, JLL does not make any guarantees, warranties or representations, express or implied, as to the completeness or accuracy as to the information contained herein. Any projections, opinions, assumptions or estimates used are for example only. There may be differences between projected and actual results, and those differences may be material. JLL does not accept any liability for any loss or damage suffered by any party resulting from reliance on this information. If the recipient of this information has signed a confidentiality agreement with JLL regarding this matter, this information is subject to the terms of that agreement. ©2022. Jones Lang LaSalle IP, Inc. All rights reserved.