

For Lease

±664-2,125 SF

Medical/Office/Lab Space

in Bio Med Hub, Ideal for High-Tech Users



225 CHIMNEY CORNER LANE Jupiter, FL 33458

Property Features

- Exceptional medical office building near world-renowned research facilities, including Max Planck Florida & Scripps Research
- Ideal space for innovative users in life sciences, medical research, laboratories, high-tech industries, and professional offices
- Timeless architecture, high ceilings, and large impact windows flood spaces with abundant natural light
- Fantastic access to I-95, the Florida Turnpike, A1A and US-1

For More Information:

Lesley Sheinberg

Managing Director | lsheinberg@mhcreal.com

Key Highlights



Located in Palm Beach County's Bio-Med Tech Hub



Versatile space, ready for your customization



T.I. allowance available for qualified tenants



Within walking distance to restaurants and minutes to premier attractions

Patrick Almand

Associate | palmand@mhcreal.com



FOR LEASE: 225 CHIMNEY CORNER LANE, JUPITER

Medical/Office Space Near I-95 & the Turnpike

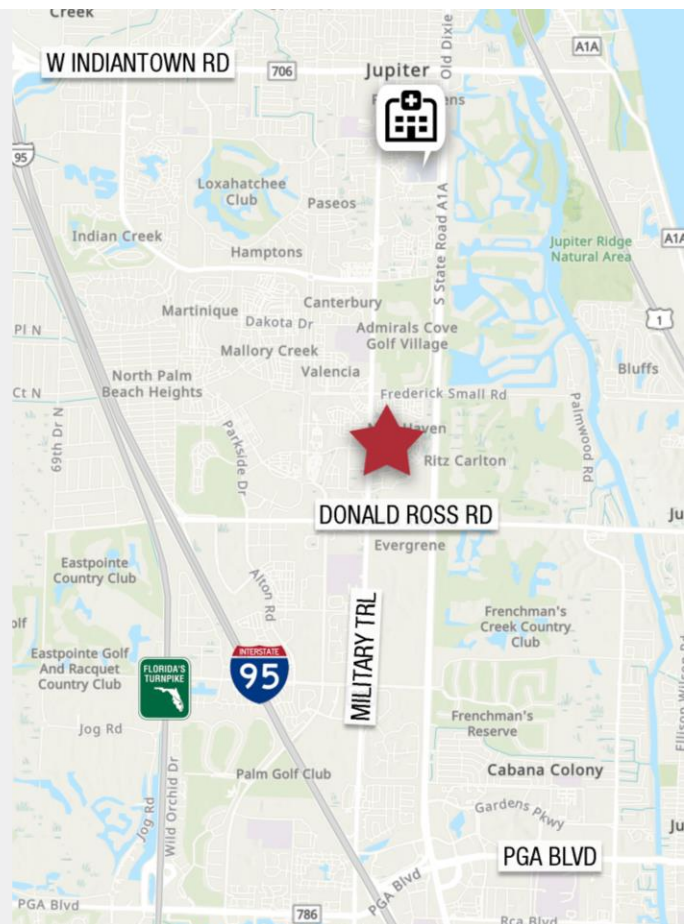


WORKSPACE IN THE HEART OF INNOVATION

Exceptional Connectivity in Palm Beach County's Bio-Med Tech Hub

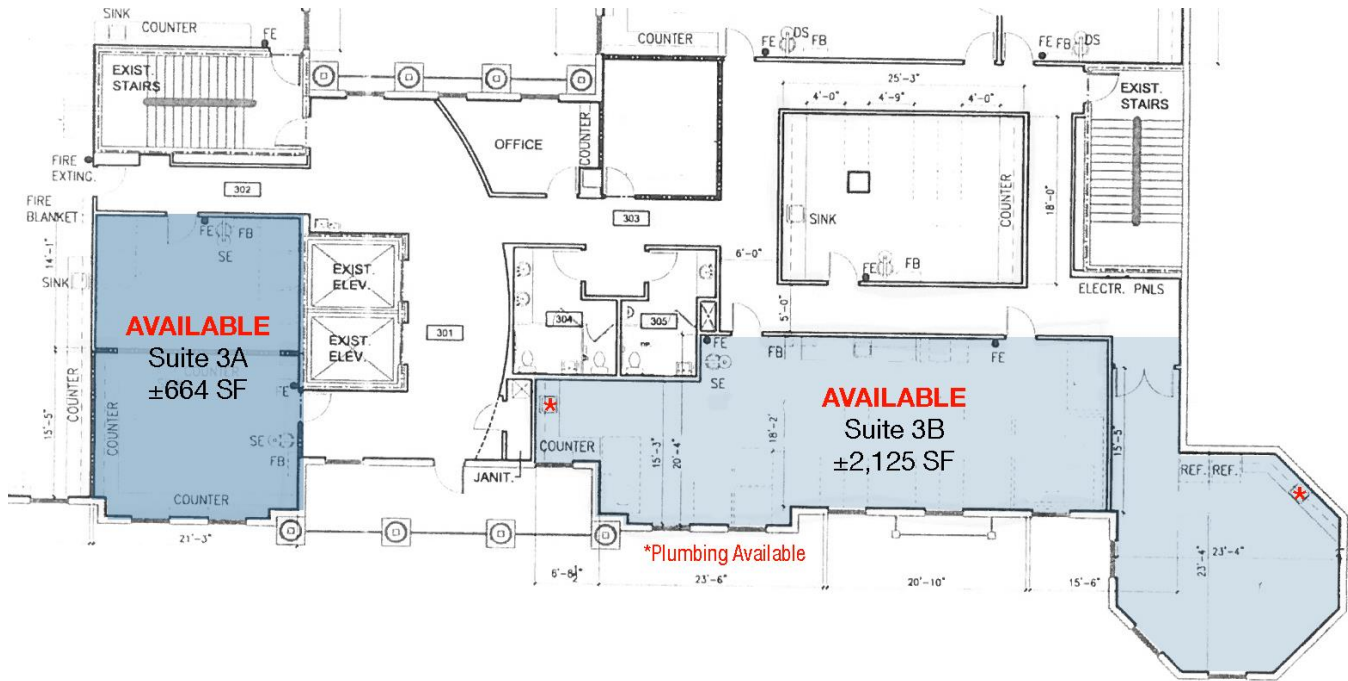
Nestled in Jupiter's thriving med-tech corridor, 225 Chimney Corner Lane offers unmatched convenience and accessibility. Enjoy seamless connection with proximity to I-95, the Florida Turnpike, A1A, and US-1.

Located minutes from professional and lifestyle amenities, including popular spots like Downtown Abacoa, Publix, Starbucks, Dunkin' Donuts, and local boutique shops and restaurants. Elevate your workplace with fantastic access and a vibrant professional environment near the best of Northern Palm Beach County.



FOR LEASE: 225 CHIMNEY CORNER LANE, JUPITER

High-Tech Workspace with T.I. Allowance Available



Discover innovative professional space at 225 Chimney Corner Lane, offering two versatile suites:

- Can accommodate a range of professional needs; with Suite 3A approved for medical use
- Both suites feature bright, open layouts enhanced by ample natural light
- Tenant Improvement Allowance can be made available for qualified tenants
- Plumbing can be made available
- Rate: \$32.00/SF | Est. CAM: \$17.00/SF


SCHEDULE YOUR TOUR TODAY! 561 471 8000

Lesley Sheinberg
Managing Director | lsheinberg@mhcreal.com

Patrick Almand
Associate | palmand@mhcreal.com

NO WARRANTY OR REPRESENTATION, EXPRESS OR IMPLIED, IS MADE AS TO THE ACCURACY OF THE INFORMATION CONTAINED HEREIN, AND THE SAME IS SUBMITTED SUBJECT TO ERRORS, OMISSIONS, CHANGE OF PRICE, OR WITHDRAWAL WITHOUT NOTICE.

 561 471 8000

 1601 Forum Place, Suite 700
West Palm Beach, FL 33401

 www.mhcreal.com