

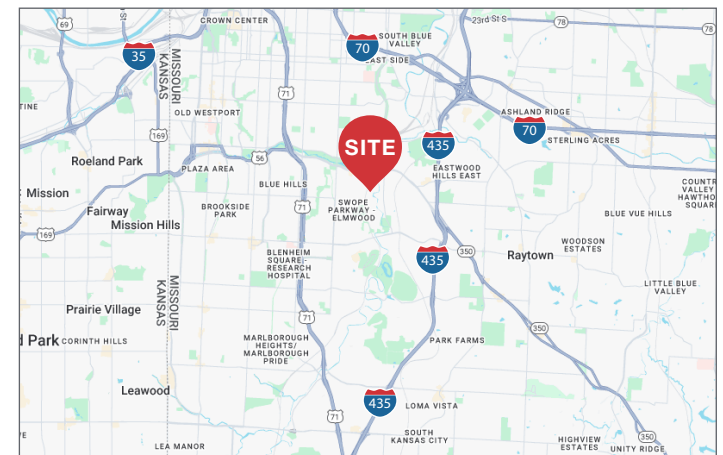


5328 Brighton Ave  
Kansas City, Missouri



## Property Features

- ± 1,800 SF Industrial Building
  - Approx. 60% finished, 40% Warehouse
- Overhead loading door
- Bonus ± 3,500 SF Metal Pole Barn with concrete floor
- Land area: approx. 13,877 SF
- Est. 200-amp 3-phase
- Zoning: M3-5
- Quick access to Interstate 435 and 71 Highway
- Sale Price: \$150,000



NO WARRANTY OR REPRESENTATION, EXPRESS OR IMPLIED, IS MADE AS TO THE ACCURACY OF THE INFORMATION CONTAINED HEREIN, AND THE SAME IS SUBMITTED SUBJECT TO ERRORS, OMISSIONS, CHANGE OF PRICE, RENTAL OR OTHER CONDITIONS, PRIOR SALE, LEASE OR FINANCING, OR WITHDRAWAL WITHOUT NOTICE, AND OF ANY SPECIAL LISTING CONDITIONS IMPOSED BY OUR PRINCIPALS NO WARRANTIES OR REPRESENTATIONS ARE MADE AS TO THE CONDITION OF THE PROPERTY OR ANY HAZARDS CONTAINED THEREIN ARE ANY TO BE IMPLIED.

4400 College Boulevard Suite 170  
Overland Park, Kansas 66211  
+1 913 362 1000

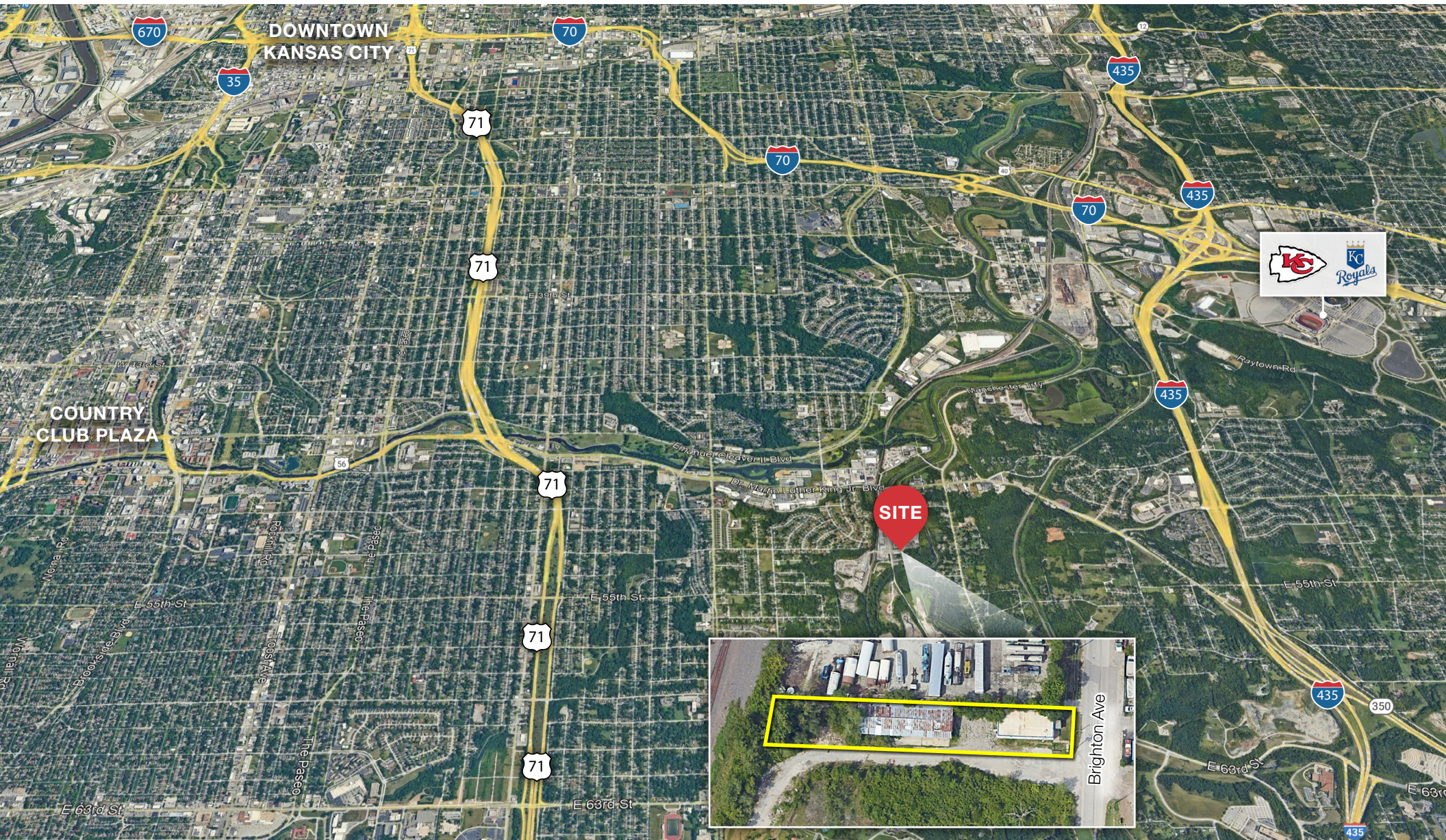
[nai-heartland.com](http://nai-heartland.com)



# Location Aerial

5328 Brighton Ave | Kansas City, Missouri

**NAI**Heartland



NO WARRANTY OR REPRESENTATION, EXPRESS OR IMPLIED, IS MADE AS TO THE ACCURACY OF THE INFORMATION CONTAINED HEREIN, AND THE SAME IS SUBMITTED SUBJECT TO ERRORS, OMISSIONS, CHANGE OF PRICE, RENTAL OR OTHER CONDITIONS, PRIOR SALE, LEASE OR FINANCING, OR WITHDRAWAL WITHOUT NOTICE, AND OF ANY SPECIAL LISTING CONDITIONS IMPOSED BY OUR PRINCIPALS NO WARRANTIES OR REPRESENTATIONS ARE MADE AS TO THE CONDITION OF THE PROPERTY OR ANY HAZARDS CONTAINED THEREIN ARE ANY TO BE IMPLIED.

For more information:

Joe O'Neill, CCIM

+1 913 890 2010 • [joe@nai-heartland.com](mailto:joe@nai-heartland.com)