

# Adlake Building

320 W Ohio St, Chicago, IL 60654

THE Adlake Presented by  
The Adlake Building



**Price: \$24.00 - \$25.00 /SF/YR**

The Adlake Building, located at 320 W. Ohio, was built in 1872, to house the railroad lantern manufacturing operations of Adams & Westlake Co. The Adlake has long since been converted for use as a timber-loft office building. Located in an extremely convenient location at the Ohio Street Feeder Ramp. Some of the companies that call The Adlake Building home include: SPACES., Perkspot, Webster Powell, Redmond Construction, Highdive Advertising, Noisefloor, and LogicGate.

# Adlake Building

320 W Ohio St, Chicago, IL 60654



**Matt Shay**

[matt@theadlakebuilding.com](mailto:matt@theadlakebuilding.com)

(815) 685-9616

**The Adlake Building**

320 W Ohio St, Suite 4E1

Chicago, IL 60654

THE  
*Adlake*

# **Adlake Building**

320 W Ohio St, Chicago, IL 60654



320 W Ohio St, Chicago, IL 60654



Front View



Alternate View

## Listing spaces

### 1st Floor Ste 100E

Space Available	9,923 SF
Rental Rate	Upon Request
Date Available	Now
Service Type	Negotiable
Space Type	Relet
Space Use	Office
Lease Term	Negotiable

Excellent opportunity to gain exposure from street level. \*Exterior Signage Available\*

### 2nd Floor Ste 2E

Space Available	13,898 SF
Rental Rate	Upon Request
Date Available	Now
Service Type	Negotiable
Space Type	Relet
Space Use	Office
Lease Term	Negotiable

Opportunity to finish 13,898 RSF second floor space to your exact specifications. Ceiling heights from 11 - 13 FT. Northern and Southern facing windows allow for abundant natural light. Space can be combined with 2N for 23,403 RSF. \* Finish-to-suit\* Generous column spacing \* Fiber optic internet (Comcast) \* Unit is in the process of being Spec'd out see attachment of plan\* Exposed brick, timber, and concrete (freshly sandblasted)\* Entire 2nd floor of East building\* Ceiling Height: 11 - 13 FT

320 W Ohio St, Chicago, IL 60654



Parking Lot



Ohio Lobby

## Listing spaces

### 2nd Floor Ste 2N

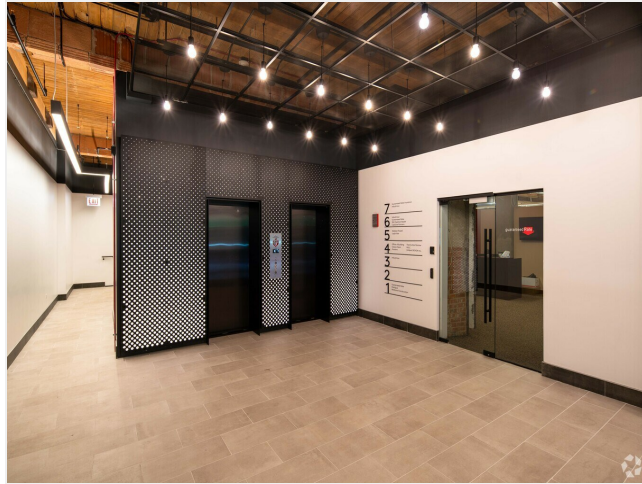
Space Available	3,000 - 9,505 SF
Rental Rate	Upon Request
Date Available	Now
Service Type	Negotiable
Space Type	Relet
Space Use	Office
Lease Term	Negotiable

Shell space that can be divided as small as 3,000 RSF.

### 3rd Floor Ste 3E

Space Available	13,900 SF
Rental Rate	\$25.00 /SF/YR
Date Available	Now
Service Type	Modified Gross
Built Out As	Financial Services
Space Type	Relet
Space Use	Office
Lease Term	Negotiable

320 W Ohio St, Chicago, IL 60654



Elevator Shaft



Lobby

## Listing spaces

### 4th Floor Ste 401W

Space Available	4,355 SF
Rental Rate	\$24.00 /SF/YR
Date Available	Now
Service Type	Modified Gross
Built Out As	Standard Office
Space Type	Relet
Space Use	Office
Lease Term	Negotiable

Unique opportunity for small loft office in the heart of River North. This space offers a sleek existing build-out with reusable conditions, high ceilings, exposed brick & timber, and a western window line. The space is ideal for a boutique company looking for creative, open space. Five personal offices, one open area and an in-unit kitchenette are included. The Adlake Building is situated at the Gateway in and out of River North, in an extremely convenient location. \* Immediate availability\* Fiber optic internet (Comcast) \* Ceiling height: 11.5 FT - 12.5 FT \* Excellent existing conditions\* Open plan with efficient layout\* Existing layout allows for a fun and unique loft-office space for a small to mid-sized tenant\* Includes kitchenette

### 5th Floor Ste 501W

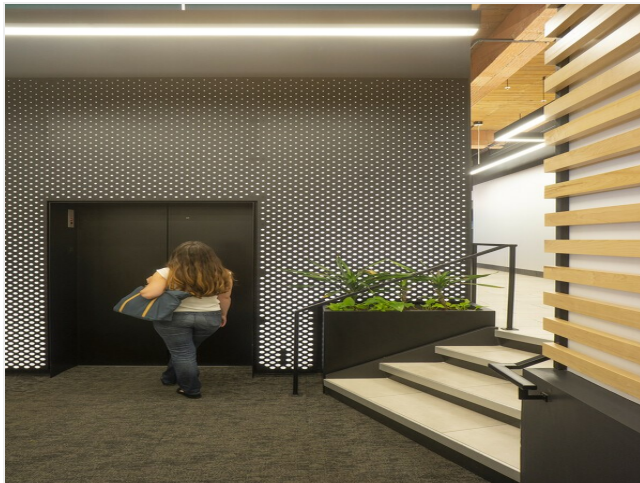
Space Available	13,537 SF
Rental Rate	Upon Request
Contiguous Area	37,704 SF
Date Available	Now
Service Type	Negotiable
Space Type	Relet
Space Use	Office
Lease Term	Negotiable



320 W Ohio St, Chicago, IL 60654



Hallway



Ohio Lobby

## Listing spaces

### 5th Floor Ste 5E

Space Available	14,534 SF
Rental Rate	\$25.00 /SF/YR
Contiguous Area	37,704 SF
Date Available	June 01, 2023
Service Type	Modified Gross
Built Out As	Standard Office
Space Type	Relet
Space Use	Office
Lease Term	Negotiable

### 5th Floor Ste 5N

Space Available	9,633 SF
Rental Rate	\$25.00 /SF/YR
Contiguous Area	37,704 SF
Date Available	June 01, 2023
Service Type	Modified Gross
Built Out As	Standard Office
Space Type	Relet
Space Use	Office
Lease Term	Negotiable

Excellent space with about 60 sit/stand workstations. Space is ready to go as-is.

# Adlake Building

320 W Ohio St, Chicago, IL 60654

## Property Photos



Farmer's Fridge



Suite 700E



# Adlake Building

320 W Ohio St, Chicago, IL 60654

## Property Photos



Suite 700E



Suite 5N



# Adlake Building

320 W Ohio St, Chicago, IL 60654

## Property Photos



Suite 2E



Suite 2E



# Adlake Building

320 W Ohio St, Chicago, IL 60654

## Property Photos



Suite 401W



Skyline



# Adlake Building

320 W Ohio St, Chicago, IL 60654

## Property Photos



Aerial



Skyline

# Adlake Building

320 W Ohio St, Chicago, IL 60654

## Location

