

Office/Industrial Condo

4749 Bennett Drive, Unit P

LIVERMORE, CA 94551

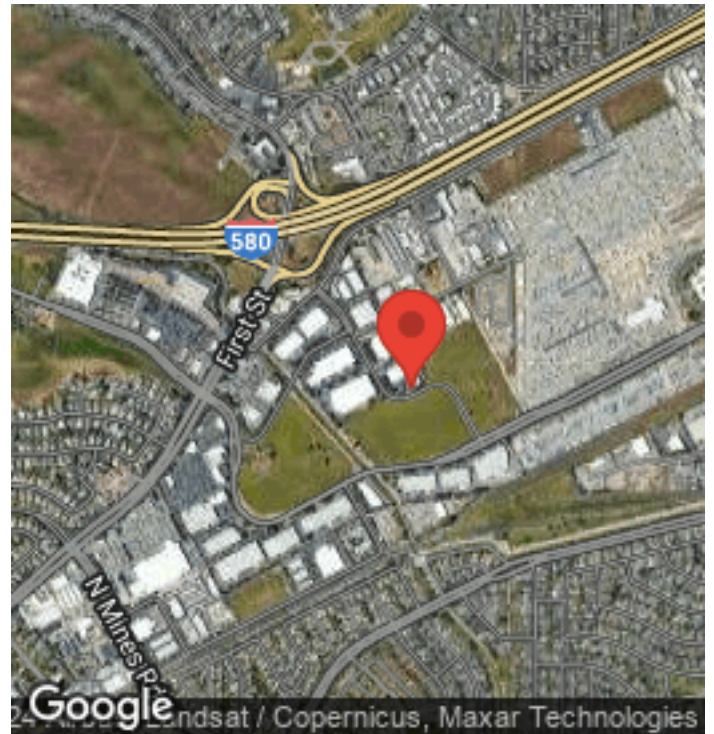
FOR SALE



— 4749 Bennett Drive —

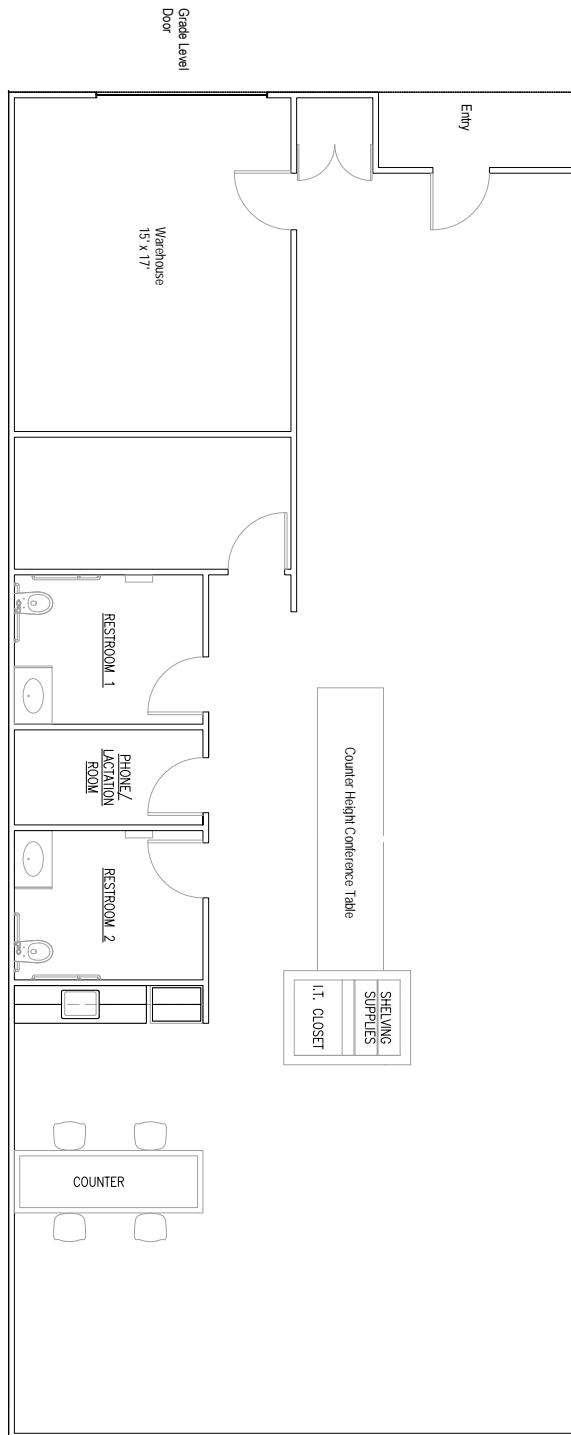
Remodeled and Upgraded

- 2,217 square feet office/industrial condo.
- Office: about 90% improved open collaborative office environment, private office, kitchen area, phone room, two restrooms. Excellent condition.
- Warehouse (15'x17') with 16' clear height and grade level door.
- 2.8/1000 parking.
- Governed by HOA and professionally managed for ease of occupancy.
- Close to retail amenities.
- Easy access to I-580 at First Street.
- Perfect owner user opportunity.
- Purchase with SBA financing for 10% down.
- Asking price: \$820,290. (\$370/SF).
- Call to show.



JAMES RANDLEMAN
Broker
(408) 549-1780
jim@jr-commercial.com

Lic # 00860359





Remodeled/upgraded Office/Flex

- +/- 1,962 SF open office collaboration environment.
- +/- 255 SF warehouse: 17' x 15', 16' clear height, one grade level door.
- Two restrooms.
- IT/Phone room.

