



Topping Office Center 13100 Manchester Rd

Des Peres, MO 63131

**2,079-4,252 SF
OFFICE FOR LEASE**

- Former Psychology Office Available With a Large Waiting Room
- Convenient Manchester/I-270 Location at Topping Rd just East of U-Turn Ramp
- Common Corridors Recently Updated
- Near Shake Shack, West County Center, Trader Joe's & St. Louis Bread Company
- Abundant Parking
- Lease Rate: \$19.00 PSF, FS

FOR MORE INFORMATION CONTACT:

Tim Balk, MBA | (314) 746-1433
tbalk@gershmancre.com



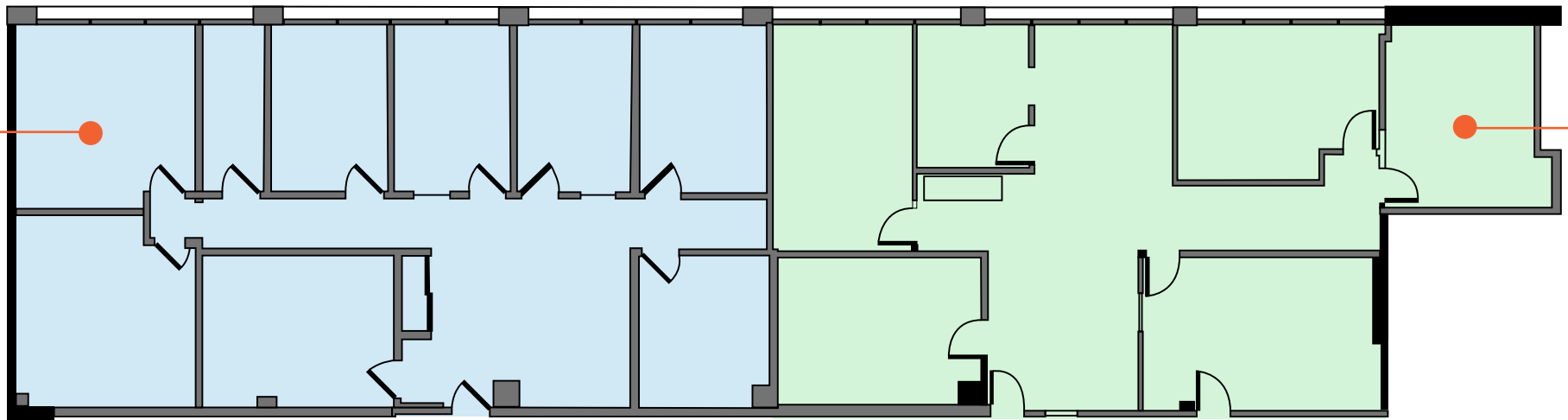


13100 Manchester Rd



Suite 155
2,079SF*

Suite 150
2,173 SF*



***Can Be Combined for a Total of 4,252 SF**