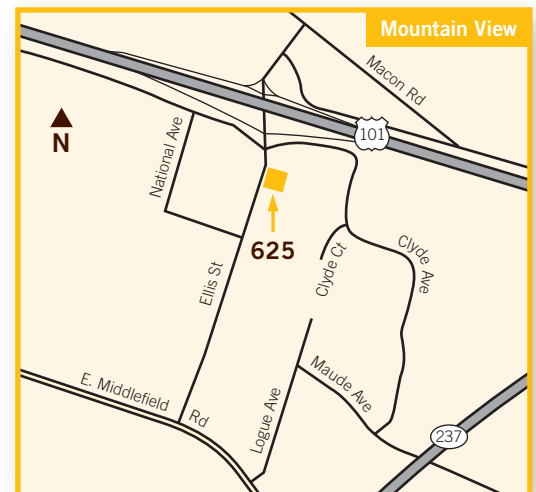




±8,901 sq ft office for lease

625 Ellis Street, Suite 300, Mountain View

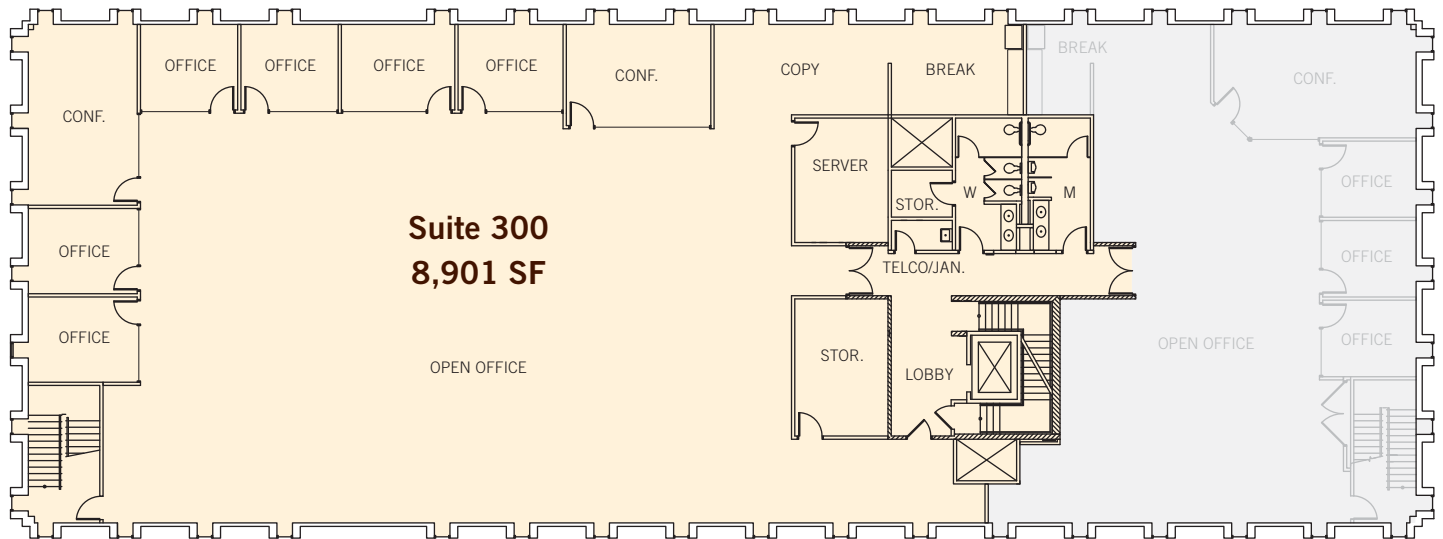
- Market ready
- 10'+ drop ceiling
- Abundant natural light
- Six (6) private offices and two (2) conference rooms, all glass-walled
- Server room with 5 tons of dedicated AC and twelve 30-amp circuits @120/208v (tenant to verify)
- Break room
- Storage room
- Shower and locker facilities in building
- Immediate access to 101
- 4.33/1,000 sf parking ratio
- Walk to VTA light rail and MVGo Shuttle to Caltrain
- AT&T Business Fiber and WiLine wireless broadband services available
- Available February 1, 2026



Dave Conklin · Geordie McKee 650.321.3040
Lic. 01036562 Lic. 01257296

±8,901 sq ft office for lease

625 Ellis Street, Suite 300, Mountain View



Floor plans may not be to scale.
The information contained
herein has been obtained from
sources we deem reliable. We
have no reason to doubt its
accuracy, but we do not
guarantee it. All information
should be verified prior to lease.

Dave Conklin · Geordie McKee 650.321.3040
Lic. 01036562 Lic. 01257296