

FOR LEASE

Business Center
MISSION, KANSAS

MISSION PLAZA

Brain Group is pleased to offer space at Mission Plaza at 5201 Johnson Drive in Mission, Kansas available for lease immediately. The business center includes spaces available from 643-2,461 square-foot with the potential for a multitude of uses with great coteranancy. There are many restaurants and shopping centers within walking distance.



Square Footage	643-2,054 square feet
Rates	\$21/SF
TI	Negotiable
Parking	3 per 1,000 square feet
Lease Term	3-10 years
Signage	Monument available
Walkability	Amenities Nearby



LEASING INFORMATION:
Andrew Brain, 816.281.5900
abrain@braingroup.co



FOR LEASE

Business Center
MISSION, KANSAS

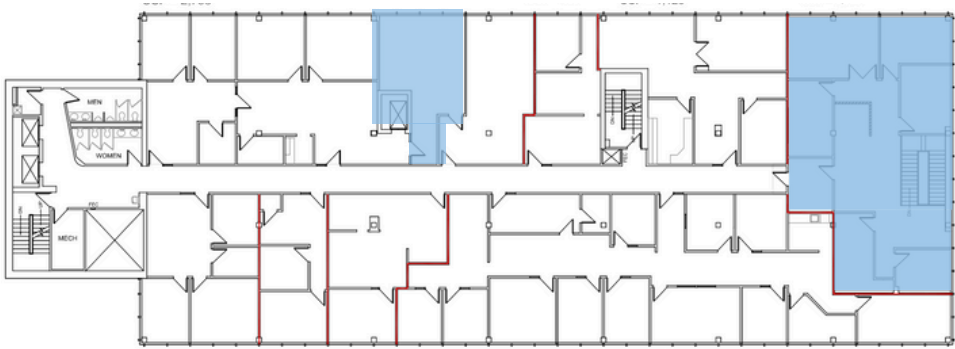


MISSION
PLAZA

 = VACANT

Suite 221
Available
8/1/25
643 RSF

Suite 230
Available
2,054 RSF



LEASING INFORMATION:
Andrew Brain, 816.281.5900
abrain@braingroup.co

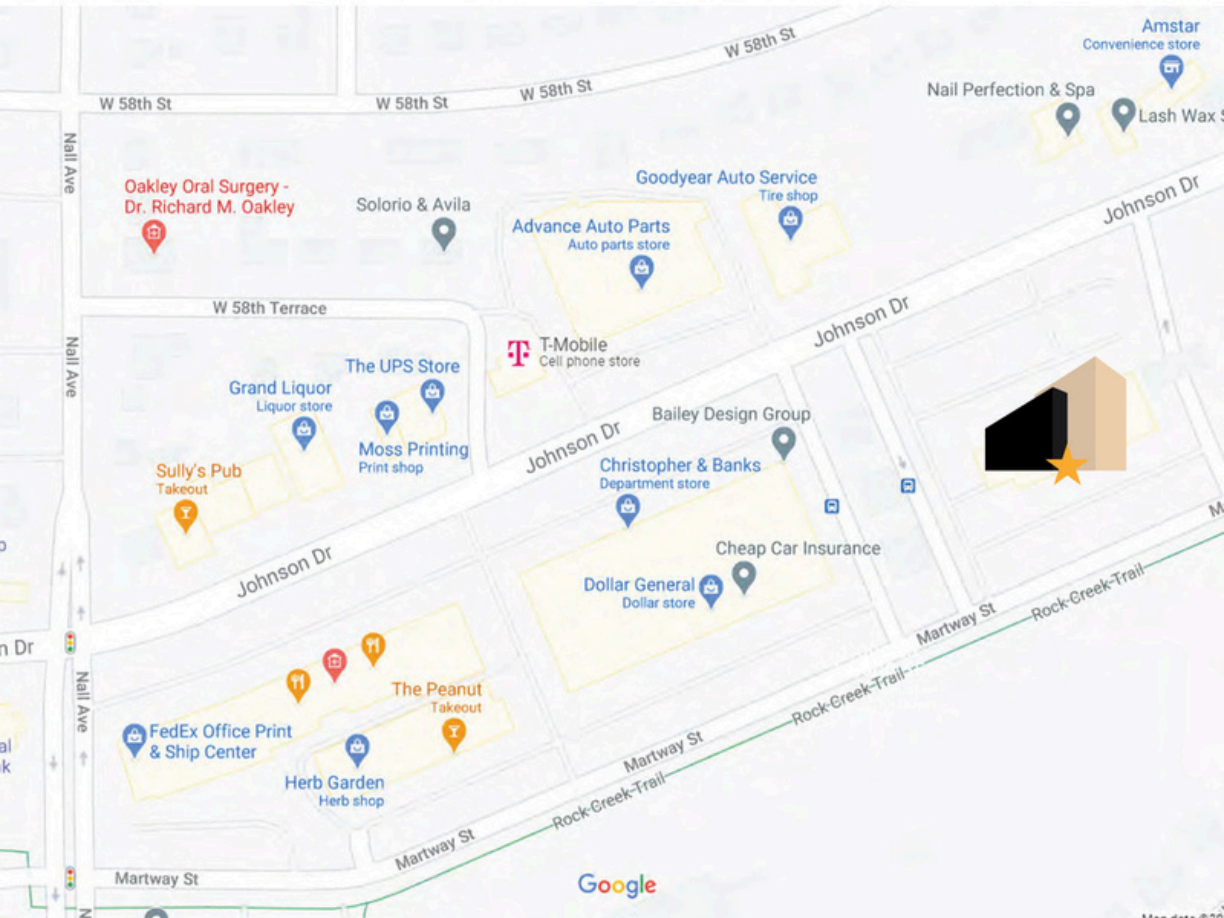
 **BRAIN GROUP**

FOR LEASE

Business Center
MISSION, KANSAS



MISSION PLAZA



LEASING INFORMATION:
Andrew Brain, 816.281.5900
abrain@braingroup.co



BRAIN GROUP