

# LEASE

## HISTORIC WHITTEMORE HOUSE

1526 New Hampshire Ave NW, Washington, DC 20036



LEASE RATE

\$34.00 SF/yr

**Deniz Senyurt, CCIM**

(571) 271-6604

[deniz.senyurt@cbcnrt.com](mailto:deniz.senyurt@cbcnrt.com)

©2023 Coldwell Banker. All Rights Reserved. Coldwell Banker Commercial® and the Coldwell Banker Commercial logos are trademarks of Coldwell Banker Real Estate LLC. The Coldwell Banker® System is comprised of company owned offices which are owned by a subsidiary of Anywhere Advisors LLC and franchised offices which are independently owned and operated. The Coldwell Banker System fully supports the principles of the Equal Opportunity Act.



**COLDWELL BANKER  
COMMERCIAL  
REALTY**

# LEASE

## HISTORIC WHITEMORE HOUSE

1526 New Hampshire Ave NW, Washington, DC 20036



### PROPERTY DESCRIPTION

A 990 SF office space with a private office, a large common area, and a kitchen is available for lease at the prestigious Whittemore House, one of Washington, DC's most historic and elegant mansions. Ideal for law firms, lobbyists, nonprofit organizations, or any business seeking a presence in the DC market, this space offers a prime location and classic charm. Subject to availability, the tenant may book the Whittemore House's meeting rooms on a daily or hourly basis, making it a flexible solution for professional gatherings and client meetings. This is a unique opportunity to establish your business in an iconic property with modern conveniences in the heart of the city.

### OFFERING SUMMARY

Lease Rate:	\$34.00 SF/yr (Full Service)
Number of Units:	1
Available SF:	990 SF

**Deniz Senyurt, CCIM**

(571) 271-6604

deniz.senyurt@cbcncr.com



**COLDWELL BANKER**  
**COMMERCIAL**  
REALTY

# LEASE

## HISTORIC WHITEMORE HOUSE

1526 New Hampshire Ave NW, Washington, DC 20036



### LOCATION DESCRIPTION

1526 New Hampshire Ave NW, Washington, DC, is located an easy walk from historic DuPont Circle where you can catch a bit of fresh air and people watching in one of DC's most well known Public Parks; Aside from Dupont Circle Metro (Red Line), There are several bus lines that are also less than a 5 minute walk from The Whittemore House: 42, 43 and L2, all running SW to NE along Connecticut Ave.; G2, N2, N4 & N6, all running E to W along P St.

**Deniz Senyurt, CCIM**

(571) 271-6604

deniz.senyurt@cbcrrt.com



COLDWELL BANKER  
**COMMERCIAL**  
REALTY

# LEASE

## HISTORIC WHITEMORE HOUSE

1526 New Hampshire Ave NW, Washington, DC 20036



### PROPERTY HIGHLIGHTS

- Dupont Metro Station (Red Line) and bus lines are in close vicinity
- Accessible by elevator and stairs
- A private office, a large common area, and a kitchen
- Signage visible by 7,378 Vehicles Per Day
- Tenant will have the option to install brass signage on the front of the building near the entrance that meets the approval of the Landlord
- Footprint at a prestigious address in Washington DC
- Opportunity to take advantage of the amenities of the Whittemore House, i.e. lunch at member prices, additional meeting rooms for rent etc
- Nearby Restaurants: The Pembroke, Kramer's All Day, The Doyle, Rakuya, Mission DuPont Circle, Taim Mediterranean, DuPont Coffee Collective
- Nearby Hotels: The Washington Hilton, The Swann House, The Lyle, The Dupont Circle Hotel, The Ven at Embassy Row
- Nearby Retail Stores: Kramer's Books, Loft, AT & T, Comfort One Shoes, CVS, Second Story Books

**Deniz Senyurt, CCIM**

(571) 271-6604

deniz.senyurt@cbcncr.com



**COLDWELL BANKER**  
**COMMERCIAL**  
REALTY

# LEASE

## HISTORIC WHITEMORE HOUSE

1526 New Hampshire Ave NW, Washington, DC 20036



**Deniz Senyurt, CCIM**  
(571) 271-6604  
[deniz.senyurt@cbcrrt.com](mailto:deniz.senyurt@cbcrrt.com)

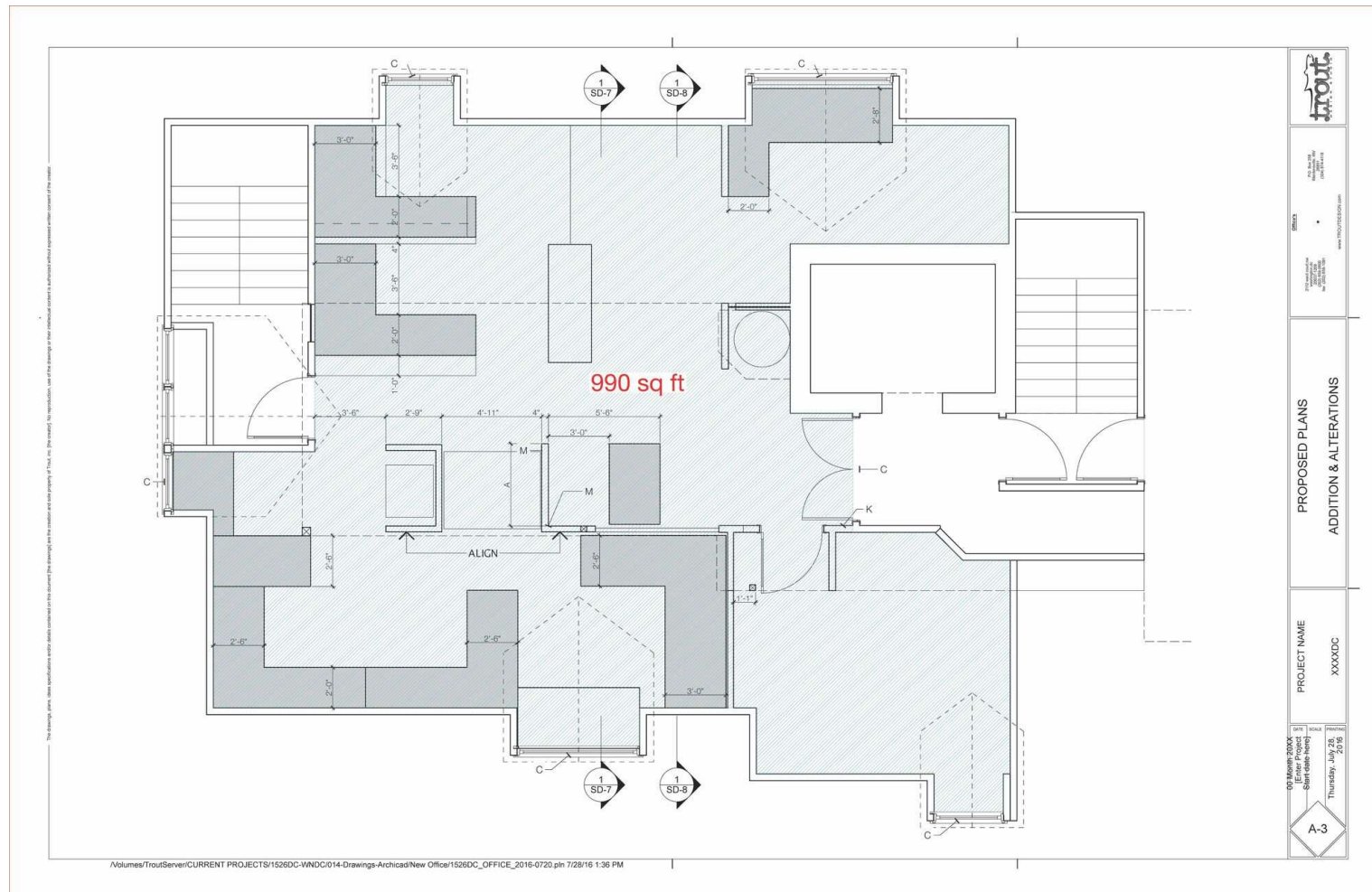


**COLDWELL BANKER**  
**COMMERCIAL**  
REALTY

# LEASE

## HISTORIC WHITTEMORE HOUSE

1526 New Hampshire Ave NW, Washington, DC 20036



**Deniz Senyurt, CCIM**

(571) 271-6604

deniz.senyurt@cbcnrt.com



**COLDWELL BANKER  
COMMERCIAL**  

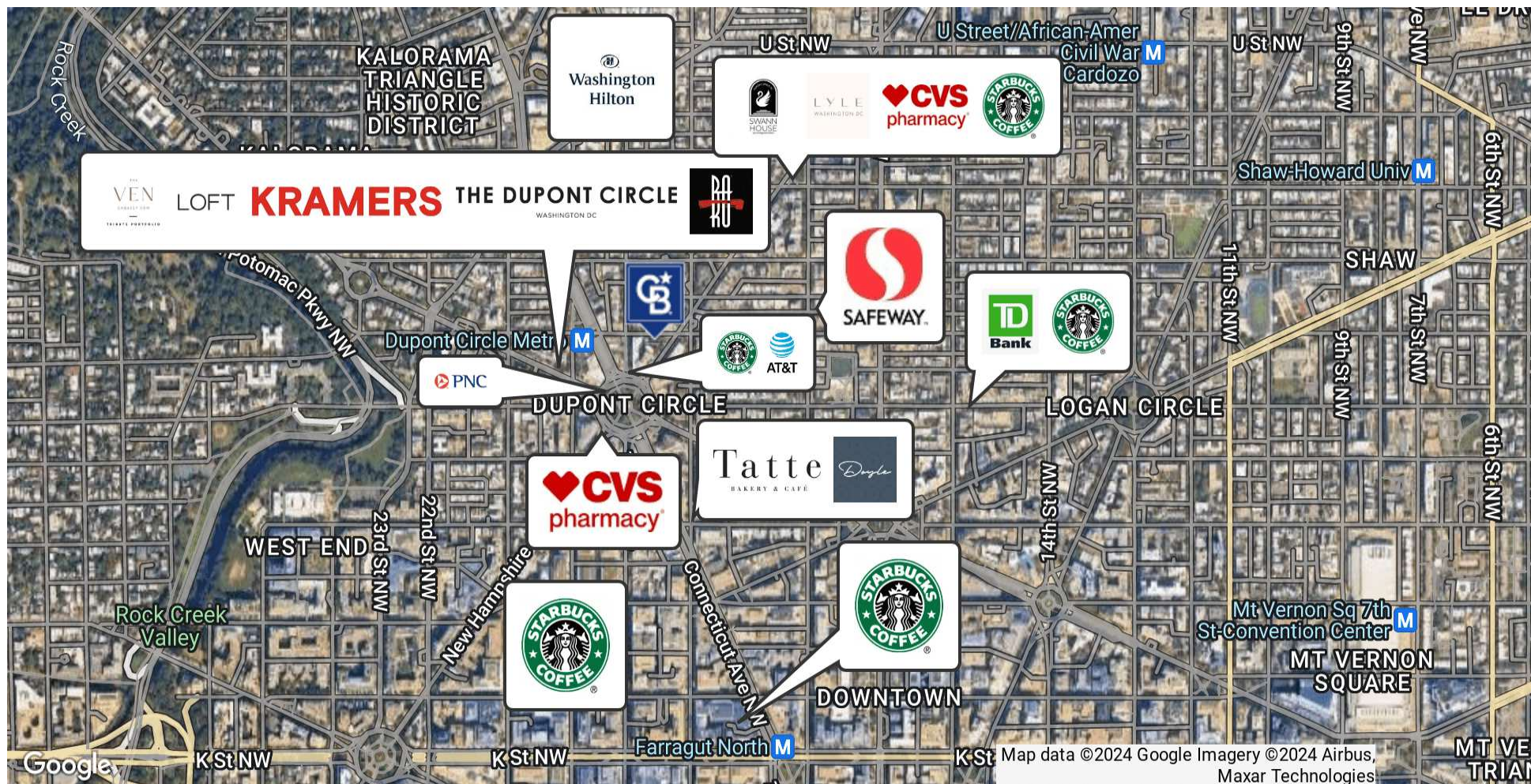
---

**REALTY**

# LEASE

## HISTORIC WHITEMORE HOUSE

1526 New Hampshire Ave NW, Washington, DC 20036



Deniz Senyurt, CCIM

(571) 271-6604

deniz.senyurt@cbcnrt.com



COLDWELL BANKER  
**COMMERCIAL**  
REALTY



**DENIZ SENYURT, CCIM**  
**Commercial Real Estate**  
**Associate Broker**  
[deniz.senyurt@cbcnrt.com](mailto:deniz.senyurt@cbcnrt.com)  
**Direct: 571.271.6604**

## PROFESSIONAL BACKGROUND

Deniz Senyurt holds a Real Estate Broker license in Virginia and a Sales Associate license in Maryland and Washington DC. Deniz specialized in commercial real estate with vast experience in medical office, retail, and industrial property leasing and sales. Aside from being Chair of the Commercial Council of NVAR, Deniz serves as Northern Virginia Area Director of CCIM Mid Atlantic Chapter. She is also the 2022 Coldwell Banker International Diamond Society Presidents Elect, 2022 Coldwell Banker Commercial Gold Circle of Distinction, 2023 Coldwell Banker Commercial Silver Circle of Distinction, 2024 CREXI Platinum Broker and NVAR Platinum Top Producer Award Winner.

## EDUCATION

Deniz holds 3 Masters degrees (MBA in Small and Medium Sized Enterprises, MBA in International Business Finance, MA in International Trade and Investment Policy Program), from George Washington University. She has graduated from NVAR Leadership Institute in 2021. Her designations are Certified International Property Specialist (CIPS), Certified Merger and Acquisition Advisor (CM&AA) and Certified Commercial Investment Member (CCIM) .

## MEMBERSHIPS

MAREMA, CCIM, NVAR, NAR

Past President of Mid Atlantic Real Estate Marketing Association



# LEASE

## HISTORIC WHITEMORE HOUSE

1526 New Hampshire Ave NW, Washington, DC 20036



LEASE RATE

\$34.00 SF/yr

**Deniz Senyurt, CCIM**

(571) 271-6604

[deniz.senyurt@cbcnrt.com](mailto:deniz.senyurt@cbcnrt.com)

©2023 Coldwell Banker. All Rights Reserved. Coldwell Banker Commercial® and the Coldwell Banker Commercial logos are trademarks of Coldwell Banker Real Estate LLC. The Coldwell Banker® System is comprised of company owned offices which are owned by a subsidiary of Anywhere Advisors LLC and franchised offices which are independently owned and operated. The Coldwell Banker System fully supports the principles of the Equal Opportunity Act.



**COLDWELL BANKER**  
**COMMERCIAL**  
**REALTY**