



# STORAGE LAND FOR SALE OR LEASE

TRUCKS - EQUIPMENT - INDUSTRIAL STORAGE  
PERFECT FOR BONDED LAYDOWN & STAGING



1924 South 7200 West, Salt Lake City, Utah 84044

## SITE FEATURES

- 2.33 Acres Industrial Land (101,495 SF)
- M-1 Industrial Zoning
- Fully Fenced with Locking Gate
- Compacted Road Base
- Temporary Structures Allowed
- Paving and Utilities Available with Lease Adjustment

## PROPERTY OVERVIEW

- Inside the Salt Lake Inland Port Logistics Corridor
- Potential for Foreign Trade Zone (FTZ) Application
- Eligible for Bonded Laydown/Staging Yard Operations
- Prime Small-Format Yard in a High Demand Industrial Zone

## STRATEGIC ADVANTAGES

- One of the Closest Private Available Yards to SLC International Airport
- Direct Access to I-80, S.R. 201 and I-15 (10 Hours to West Coast Ports)
- Ideal for Airfreight Staging, Containers, Fleet Yard and Last-Mile Logistics
- Reduce Customs and Demurrage Fees with Bonded Operations
- Operate like an Extension of the Airport without Airport-Zone Pricing

**PURCHASE PRICE : \$2,350,000.00**

**LEASE RATE REDUCED : \$4,100.00/ACRE PER MONTH NNN**

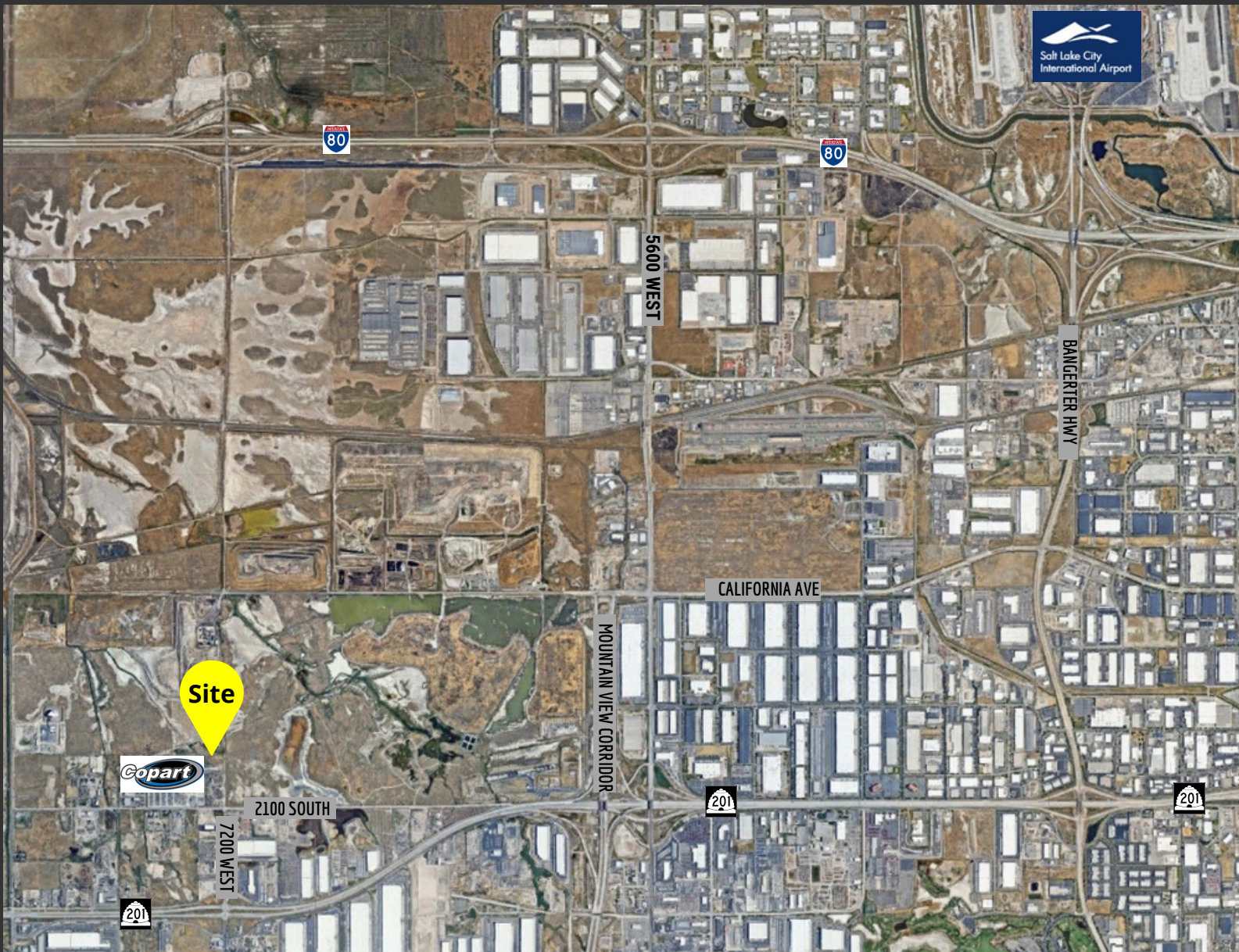
## CONTACT

**MOBILE: 801.783.6269**

**CHRISTOPHER WILSON**

**christopher.wilson@crcnationwide.com**





**CONTACT**

**MOBILE: 801.783.6269**

**CHRISTOPHER WILSON**

[christopher.wilson@crcnationwide.com](mailto:christopher.wilson@crcnationwide.com)