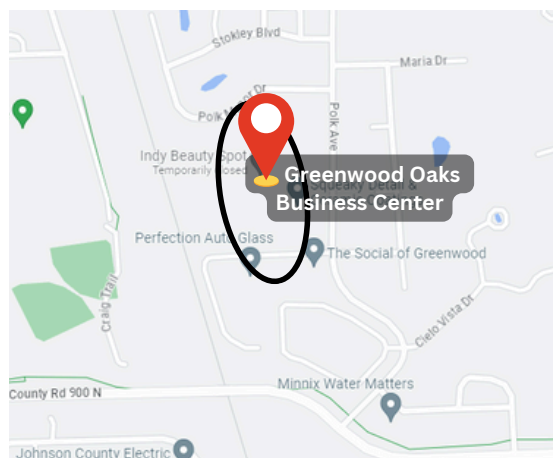


AVAILABLE SPACE
1,641 SQ. FT.



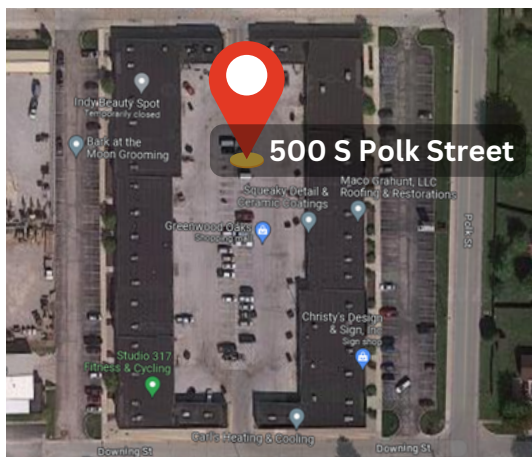
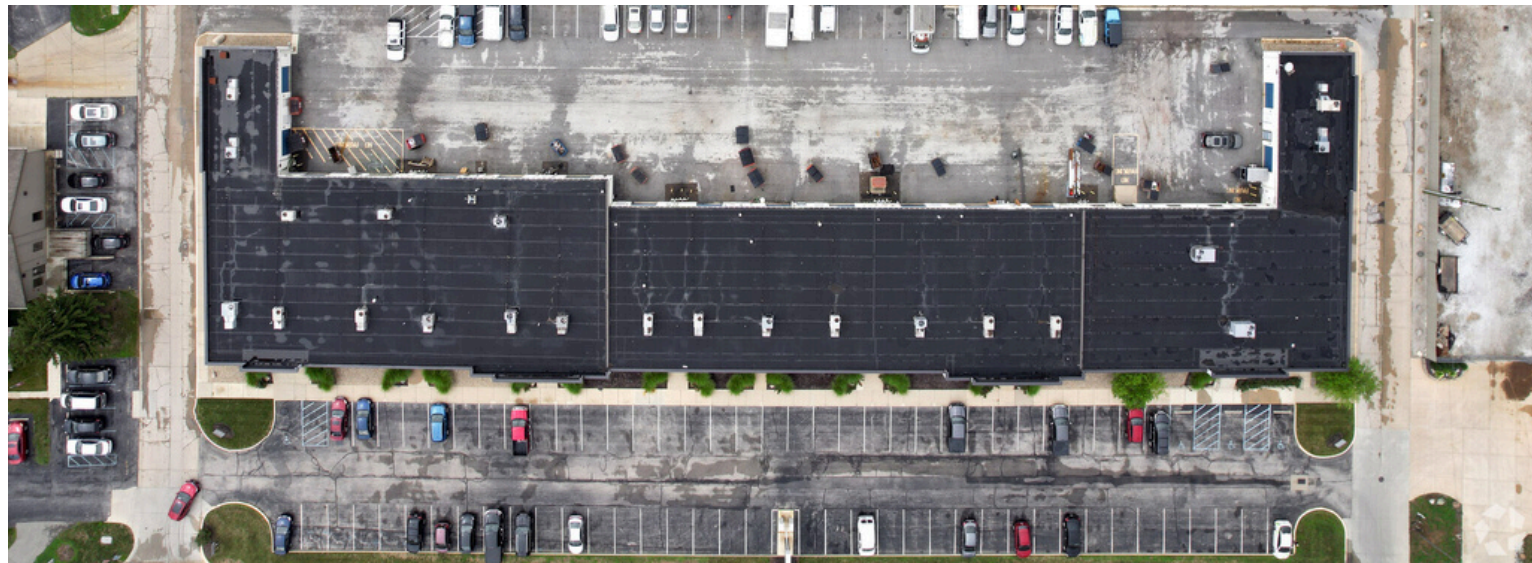
ABOUT THE PROPERTY:

- Industrial Flex Complex
- Located Conveniently to I-65
- Recently Renovated + Modernized
- New Directional Signage
- New Landscaping + Exterior Updates

PROPERTY FEATURES:

- One (1) Units Available
- Parking: 160 Spaces
- 57,707 SF of Flex Space
- Lot Size: 5.23 AC
- Warehouse + Drive-In Access

BUILDING 1 - EAST BUILDING - 1,641 SF



PROPERTY DETAILS:

Building Size: 57,707 SF
Available SQ FT: 1,641 SF
Lot Size: 5.23 AC
Zoning: PUD

UNIT

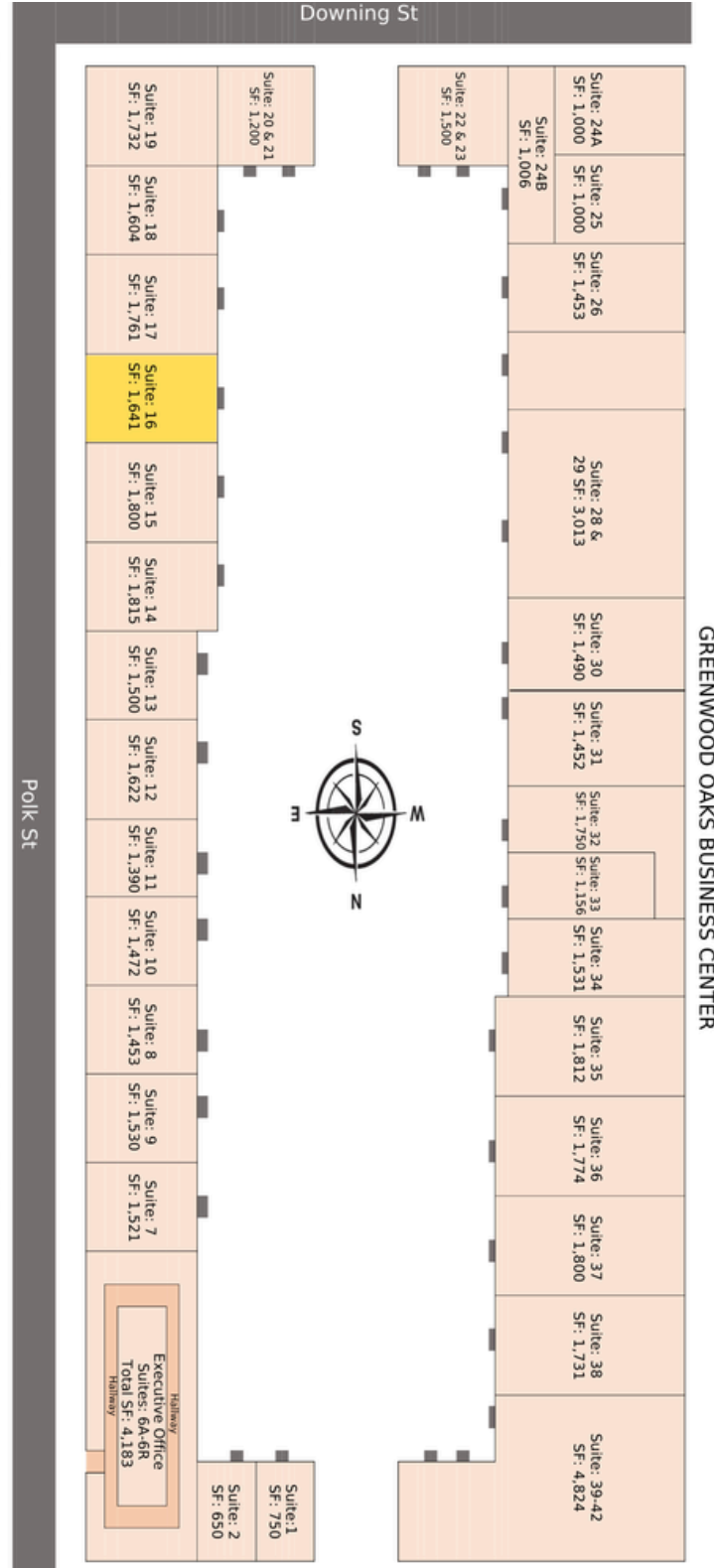
16

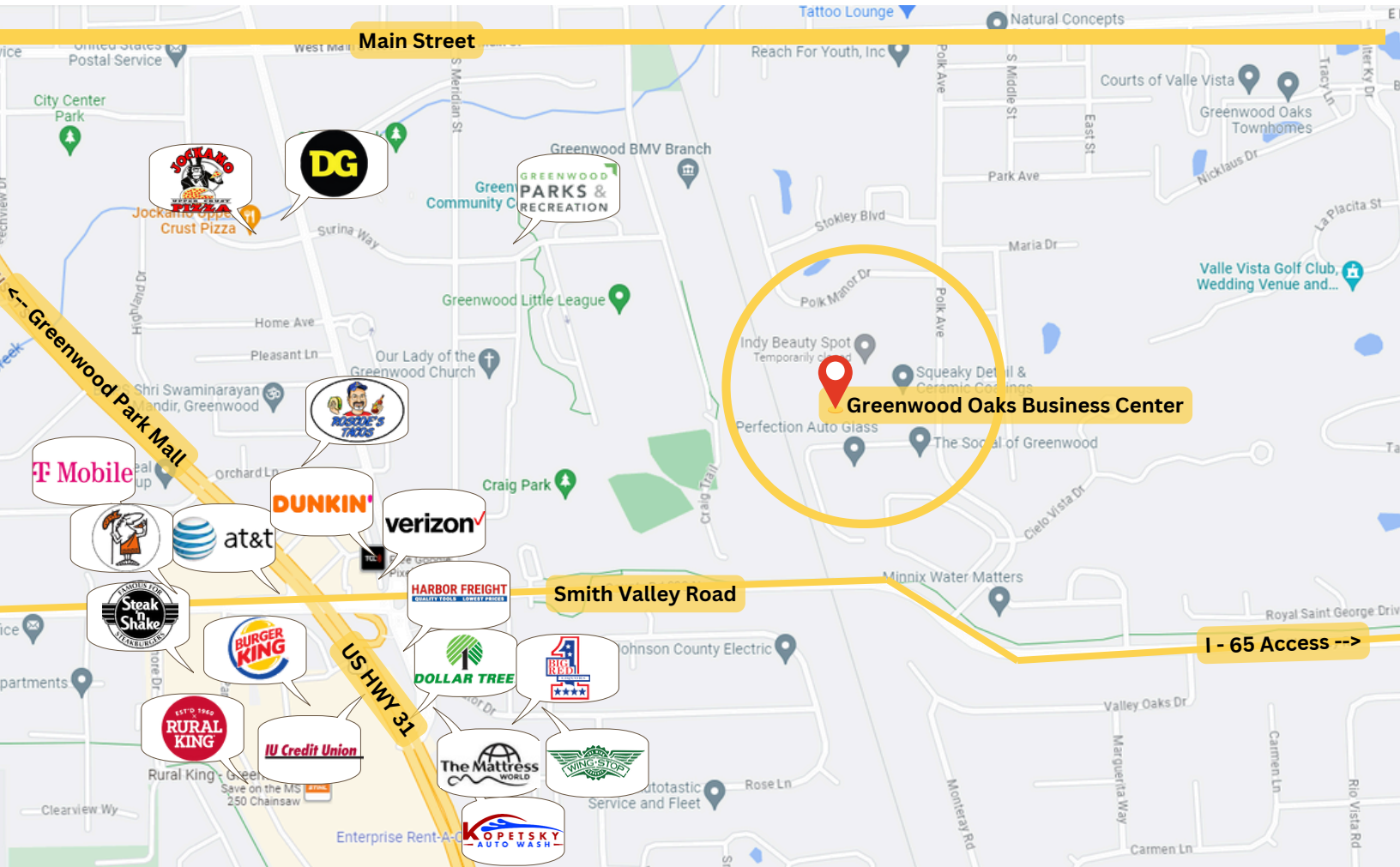
TENANT

Available
Office/Flex

SQ FT

1,641 SF
\$15.00/SF | Mod Gross





DEMOGRAPHICS:

1 MILE

3 MILE

5 MILE

POPULATION

10,384

77,120

156,795

HOUSEHOLDS

4,849

30,737

61,387

median HH income

\$63,939

\$79,248

\$85,604

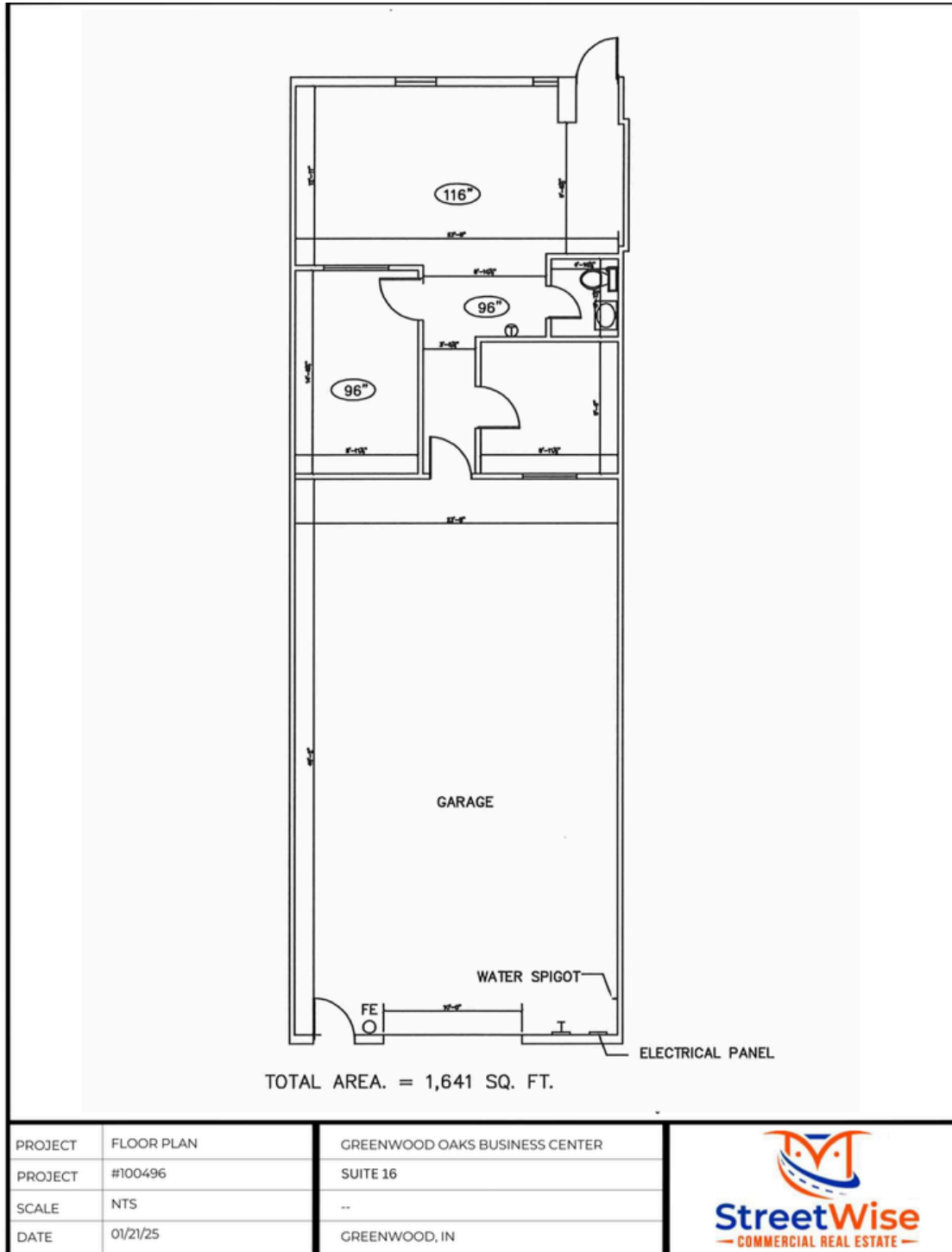
Median Age

39.1

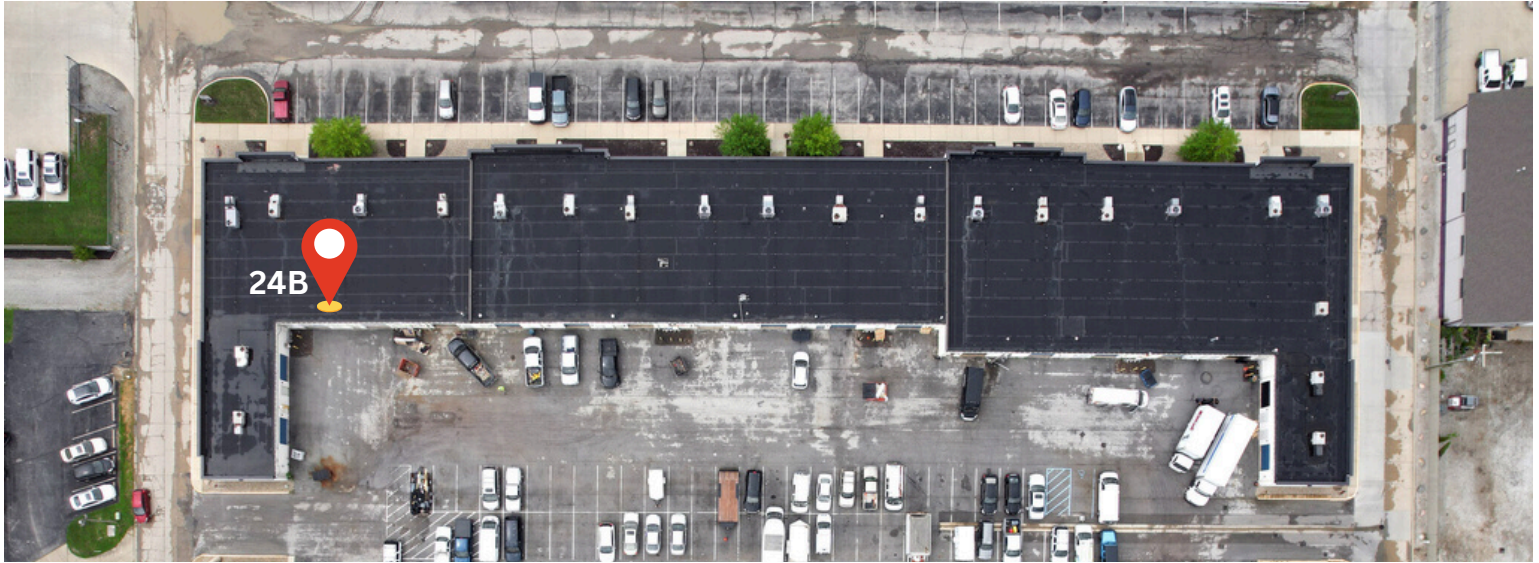
36.7

37.1

SUITE 16 - EAST BUILDING - 1,641 SQ. FT.



BUILDING 2 - WEST BUILDING -



UNIT

24B

TENANT

Available

Warehouse ONLY

SQ FT

SUITE 6B - EAST BUILDING - 231 SQ. FT.

