

# University Park Service Center

12661 - 12679 Silicon Drive

12661-12679 Silicon Dr  
San Antonio, TX 78249  
[www.cbre.com/sanantonio](http://www.cbre.com/sanantonio)

## Office / Warehouse Spaces for Lease



## Overview

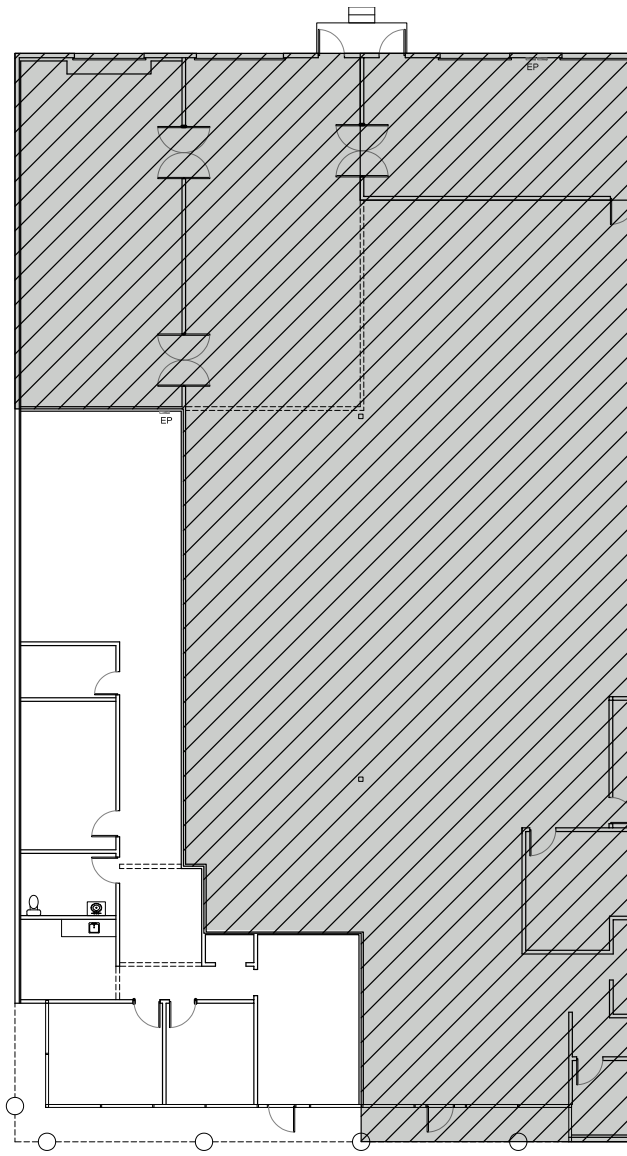
University Park Service Center is an attractive, well-maintained business park located in the Northwest San Antonio Submarket, offering a variety of office & warehouse configurations.

## Property Highlights

- |   |                                |                         |               |
|---|--------------------------------|-------------------------|---------------|
| + Total Building Size - 39,706 SF                     | + 16' Minimum Clearance Height | + Availability:         |               |
| + Quick Access to IH-10, Loop 410, and Medical Center | + Ample Parking Available      | - Suite 12661: 2,134 sf | Contiguous    |
| + Flexible, High-Tech Architecture                    | + Rate: \$14.50/sf NNN         | - Suite 12665: 4,967 sf | Option:       |
| + Grade-Level Loading                                 | + OPEX: \$5.67 psf             | - Suite 12669: 6,741 sf | 12669, 12673, |
|   |                                | - Suite 12673: 6,972 sf | and 12677 for |
|   |                                | - Suite 12677: 5,482 sf | total of      |
|   |                                |                         | 21,006 SF.    |

# Floorplans

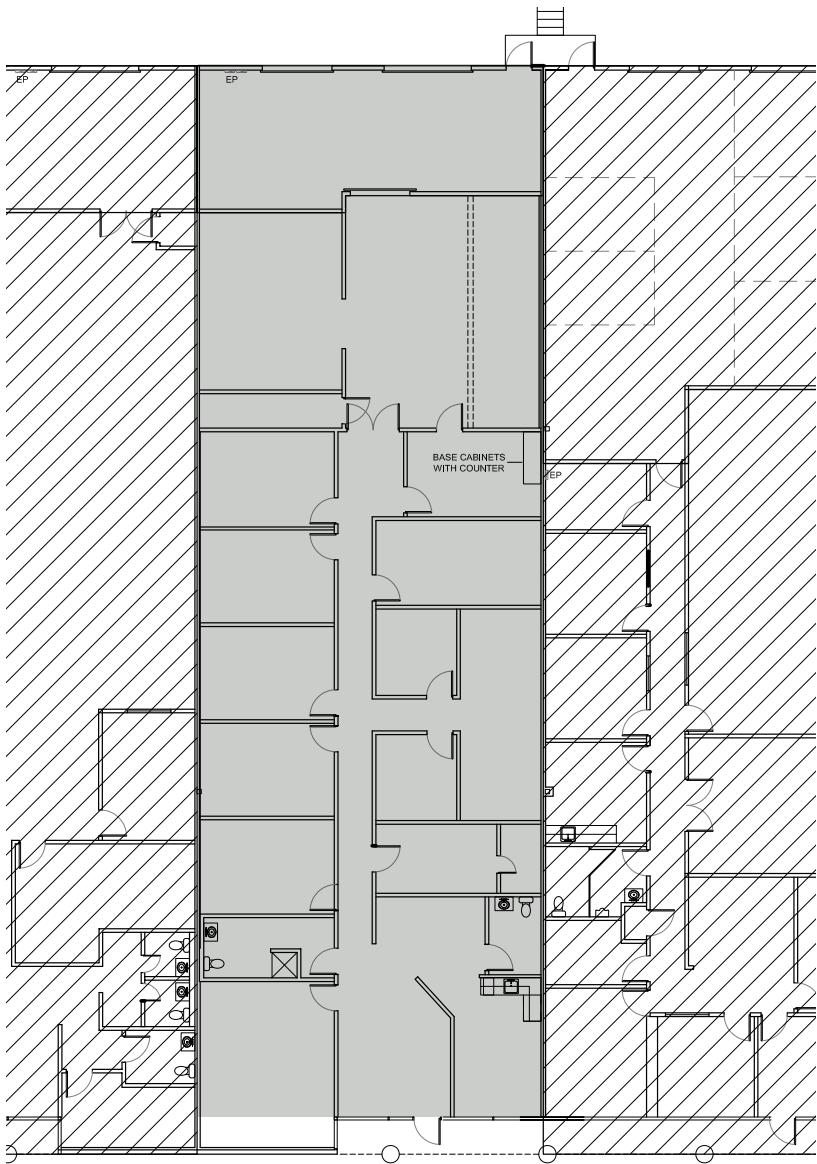
Suite 12661



Suite #	SF	Rate	Buildout	Loading	Comments
Suite 12661	2,134 sf	\$14.50/sf NNN	Office: 2,134 SF Warehouse: 0 SF	0 Loading Doors	100% Office Available 9/1/2025

# Floorplans

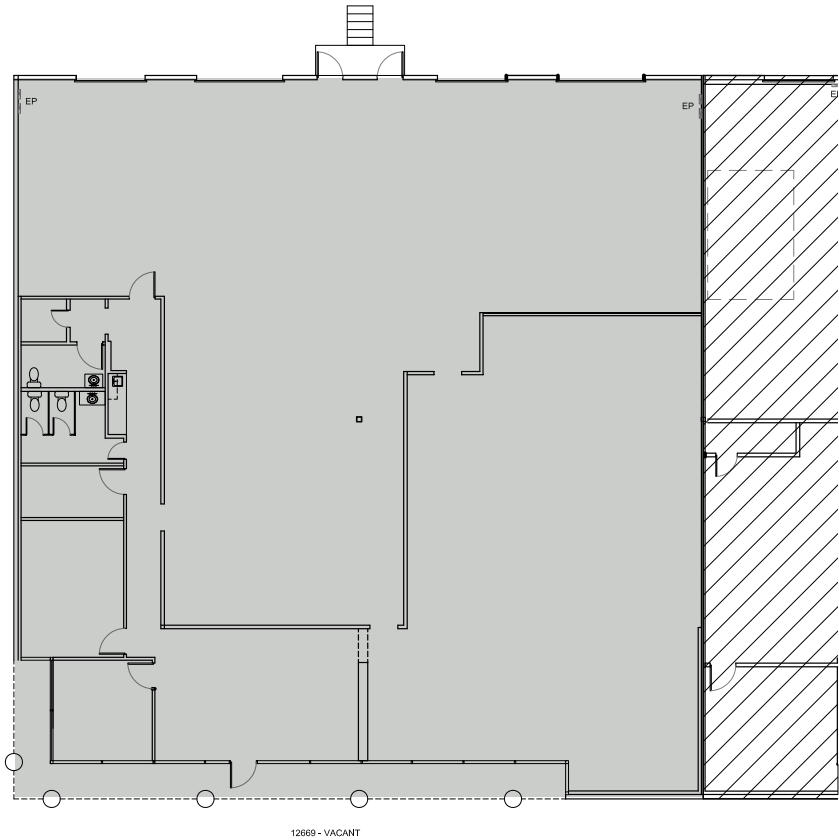
Suite 12665



Suite #	SF	Rate	Buildout	Loading	Comments
Suite 12665	4,967 sf	\$14.50/sf NNN	Office: 4,431 SF Warehouse: 626 SF	1 Ramp and 1 Half Dock	Available 4/1/2026

# Floorplans

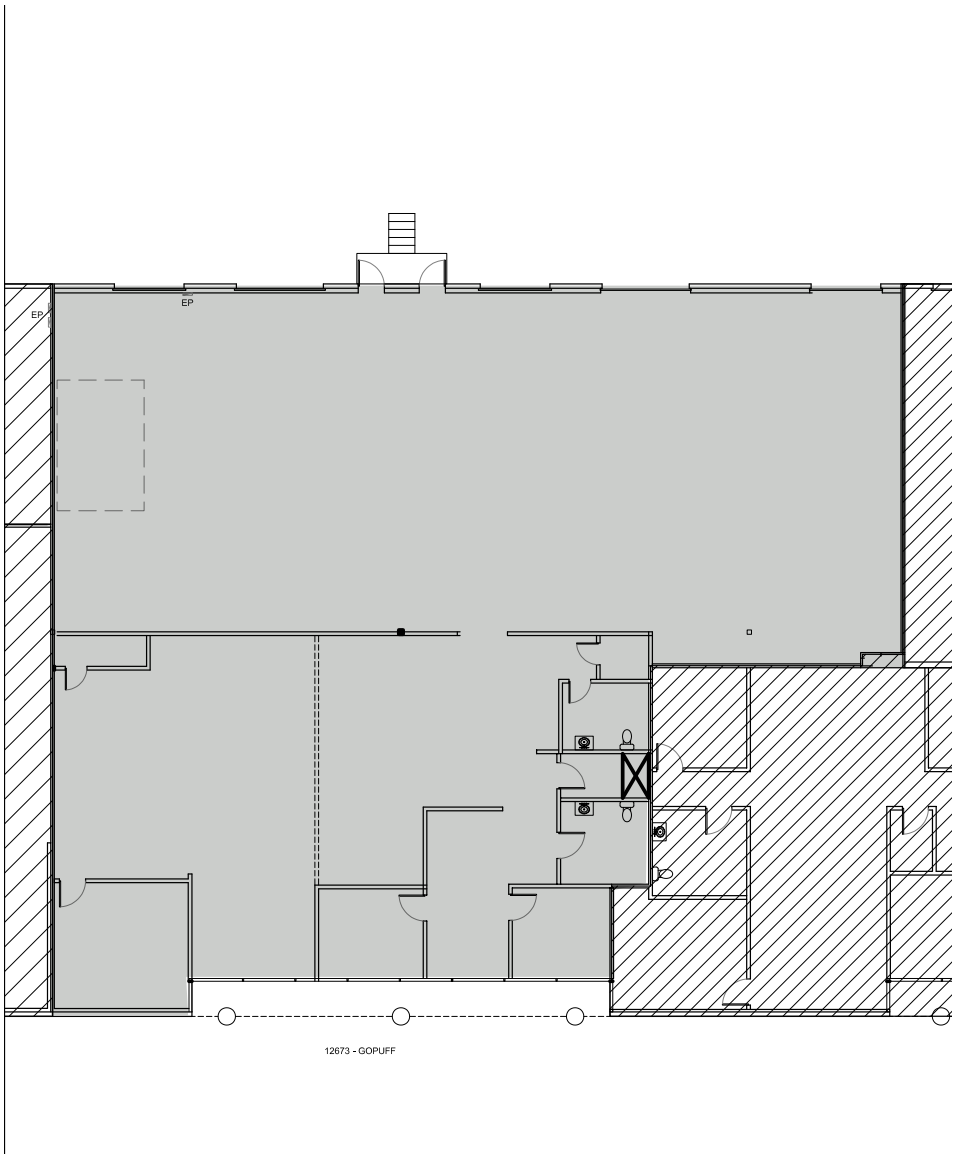
Suite 12669



Suite #	SF	Rate	Buildout	Loading	Comments
Suite 12669	6,741 sf	\$14.50/sf NNN	Office: 20% Warehouse: 80%	2 Ramps and 2 Half Docks	Available 7/1/2026

# Floorplans

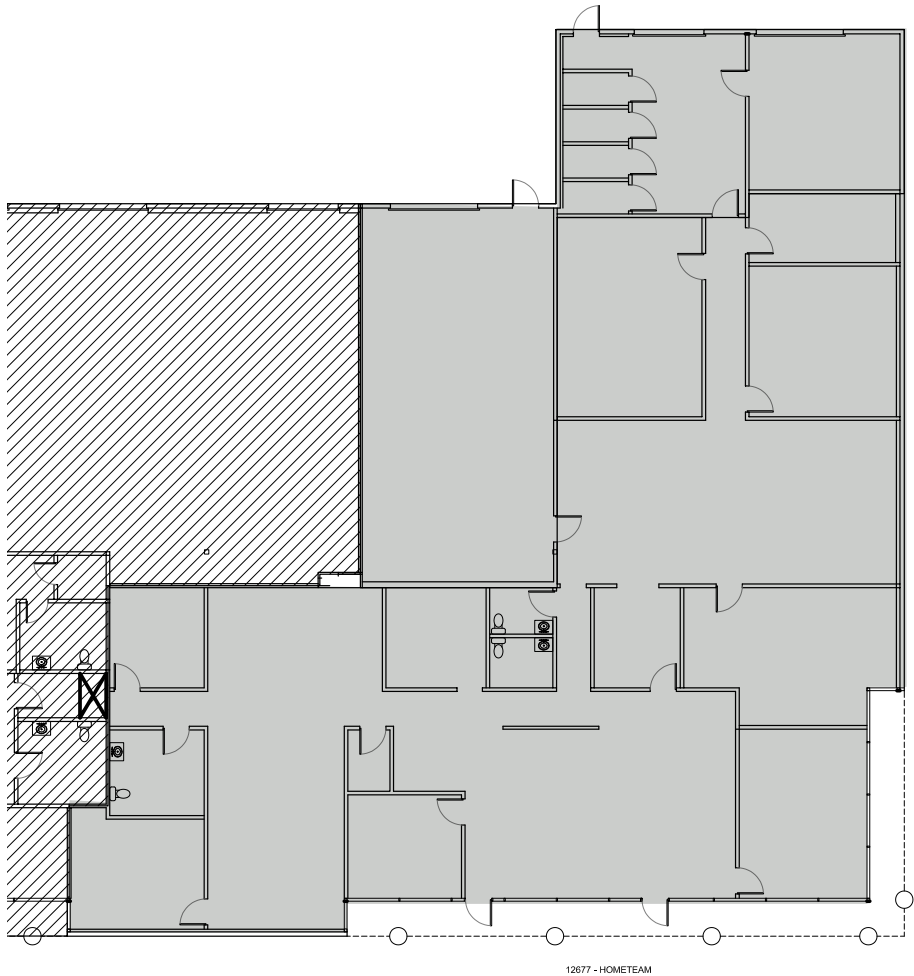
Suite 12673



Suite #	SF	Rate	Buildout	Loading	Comments
Suite 12673	6,972 sf	\$14.50/sf NNN	Office: 20% Warehouse: 80%	4 Half Docks and 1 Ramp	100% Climate Controlled Available 7/1/2026

# Floorplans

Suite 12677



Suite #	SF	Rate	Buildout	Loading	Comments
Suite 12677	7,293 sf	\$14.50/sf NNN	Office: 5,482 SF Warehouse: 1,811 SF	3 Grade Level Loading Doors	Available 6/1/2026



# Property Photos

## Front of Building





# Property Photos

## — Loading Doors

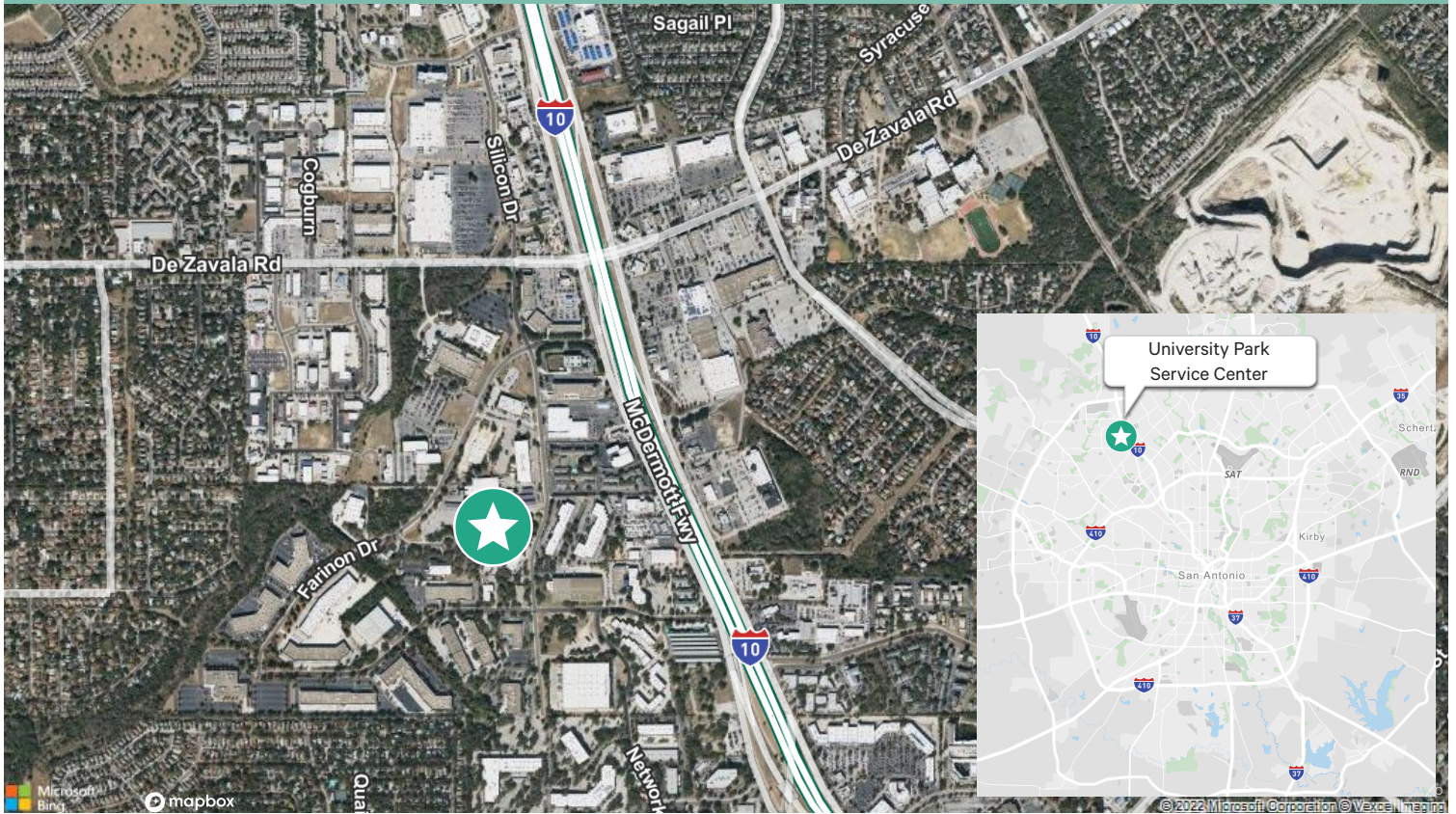




# Property Location

## Aerial Map

### Satellite & Street View



## Contact Us

### Justin Roberts

Vice President  
+1 210 841 3228  
justin.roberts@cbre.com

### Brad O'Neill

Vice President  
+1 210 253 6070  
brad.oneill@cbre.com

© 2025 CBRE, Inc. All rights reserved. This information has been obtained from sources believed reliable, but has not been verified for accuracy or completeness. You should conduct a careful, independent investigation of the property and verify all information. Any reliance on this information is solely at your own risk. CBRE and the CBRE logo are service marks of CBRE, Inc. All other marks displayed on this document are the property of their respective owners, and the use of such logos does not imply any affiliation with or endorsement of CBRE. Photos herein are the property of their respective owners. Use of these images without the express written consent of the owner is prohibited.



## Information About Brokerage Services

*Texas law requires all real estate license holders to give the following information about brokerage services to prospective buyers, tenants, sellers and landlords.*

2-10-2025



### TYPES OF REAL ESTATE LICENSE HOLDERS:

- **A BROKER** is responsible for all brokerage activities, including acts performed by sales agents sponsored by the broker.
- **A SALES AGENT** must be sponsored by a broker and works with clients on behalf of the broker.

### A BROKER'S MINIMUM DUTIES REQUIRED BY LAW (A client is the person or party that the broker represents):

- Put the interests of the client above all others, including the broker's own interests;
- Inform the client of any material information about the property or transaction received by the broker;
- Answer the client's questions and present any offer to or counter-offer from the client; and
- Treat all parties to a real estate transaction honestly and fairly.

### A LICENSE HOLDER CAN REPRESENT A PARTY IN A REAL ESTATE TRANSACTION:

**AS AGENT FOR OWNER (SELLER/LANDLORD):** The broker becomes the property owner's agent through an agreement with the owner, usually in a written listing to sell or property management agreement. An owner's agent must perform the broker's minimum duties above and must inform the owner of any material information about the property or transaction known by the agent, including information disclosed to the agent or subagent by the buyer or buyer's agent. **An owner's agent fees are not set by law and are fully negotiable.**

**AS AGENT FOR BUYER/TENANT:** The broker becomes the buyer/tenant's agent by agreeing to represent the buyer, usually through a written representation agreement. A buyer's agent must perform the broker's minimum duties above and must inform the buyer of any material information about the property or transaction known by the agent, including information disclosed to the agent by the seller or seller's agent. **A buyer/tenant's agent fees are not set by law and are fully negotiable.**

**AS AGENT FOR BOTH - INTERMEDIARY:** To act as an intermediary between the parties the broker must first obtain the written agreement of *each party* to the transaction. The written agreement must state who will pay the broker and, in conspicuous bold or underlined print, set forth the broker's obligations as an intermediary. A broker who acts as an intermediary:

- Must treat all parties to the transaction impartially and fairly;
- May, with the parties' written consent, appoint a different license holder associated with the broker to each party (owner and buyer) to communicate with, provide opinions and advice to, and carry out the instructions of each party to the transaction.
- Must not, unless specifically authorized in writing to do so by the party, disclose:
  - that the owner will accept a price less than the written asking price;
  - that the buyer/tenant will pay a price greater than the price submitted in a written offer; and
  - any confidential information or any other information that a party specifically instructs the broker in writing not to disclose, unless required to do so by law.

**AS SUBAGENT:** A license holder acts as a subagent when aiding a buyer in a transaction without an agreement to represent the buyer. A subagent can assist the buyer but does not represent the buyer and must place the interests of the owner first.

### TO AVOID DISPUTES, ALL AGREEMENTS BETWEEN YOU AND A BROKER SHOULD BE IN WRITING AND CLEARLY ESTABLISH:

- The broker's duties and responsibilities to you, and your obligations under the representation agreement.
- Who will pay the broker for services provided to you, when payment will be made and how the payment will be calculated.

**LICENSE HOLDER CONTACT INFORMATION:** This notice is being provided for information purposes. It does not create an obligation for you to use the broker's services. Please acknowledge receipt of this notice below and retain a copy for your records.

<u>CBRE, Inc.</u> Licensed Broker /Broker Firm Name or Primary Assumed Business Name	<u>299995</u> License No.	<u>texaslicensing@cbre.com</u> Email	<u>+1 210 225 1000</u> Phone
<u>Jeremy McGown</u> Designated Broker of Firm	<u>620535</u> License No.	<u>jeremy.mcgown@cbre.com</u> Email	<u>+1 214 979 6100</u> Phone
<u>John Moake</u> Licensed Supervisor of Sales Agent/ Associate	<u>540146</u> License No.	<u>john.moake@cbre.com</u> Email	<u>+1 210 225 1000</u> Phone
<u>Brad O'Neill</u> Sales Agent/Associate's Name	<u>728463</u> License No.	<u>brad.oneill@cbre.com</u> Email	<u>+1 210 253 6070</u> Phone

\_\_\_\_\_  
Buyer/Tenant/Seller/Landlord Initials

\_\_\_\_\_  
Date

