

FOR LEASE

# 433 CHAPALA STREET

SANTA BARBARA  
CA 93101

Stand alone fully renovated corner  
property with 16 private parking spaces

Completely renovated in 2024

433 Chapala St.     ±2,850 SF

**\$4.25/SF NNN (\$1.05)**



PRESENTED BY

**GENE DEERING**  
805.879.9623  
[gdeering@radiusgroup.com](mailto:gdeering@radiusgroup.com)  
CA LIC. 01450943

**PAUL GAMBERDELLA**  
805.879.9622  
[pgamberdella@radiusgroup.com](mailto:pgamberdella@radiusgroup.com)  
CA LIC. 01267748





# 433 CHAPALA STREET

SANTA BARBARA  
CALIFORNIA  
93101

Introducing a brand-new opportunity on Chapala Street — a versatile retail or office space with a distinctive industrial vibe. Boasting high ceilings, exposed architectural details, and modern design, this space offers a stylish and adaptable setting for businesses to thrive. Whether you're envisioning a dynamic retail storefront or a creative office hub, the prime location ensures excellent visibility and access in the heart of the city's bustling downtown. Elevate your brand or workspace with this one-of-a-kind leasing opportunity!

## Lease Rate

\$4.25/SF NNN (\$1.05)

## Available Sizes

433 CHAPALA ST ±2,850 SF

## Available

Q1 2025

## Year Built

Major Renovations Completed in 2024

## Parking

8 Private Parking Spaces

## Power

200amp Panels

## HVAC

New in 2024  
Two – 4 Ton and Two – 3 Ton

## Restrooms

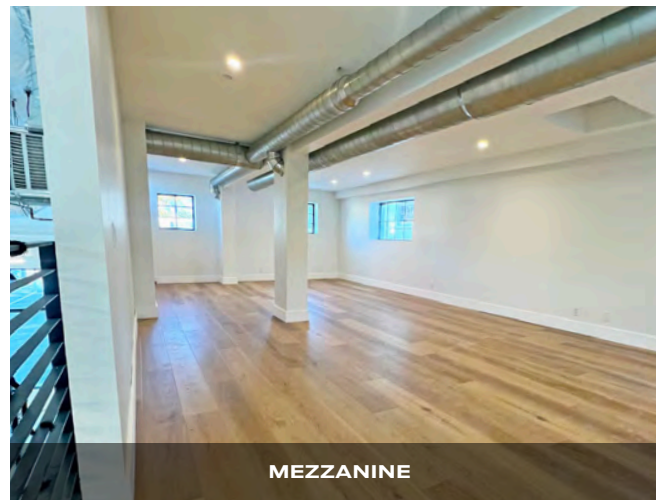
Two Sets — New in 2024

## Elevators

No

## Sprinklers

Yes



MEZZANINE

© 07/01/25 Radius Group Commercial Real Estate, Inc. DRE Lic. 01334755. All rights reserved. Content and/or images may not be used without permission. The information provided here has been obtained from the owner of the property or from other sources deemed reliable. We have no reason to doubt its accuracy, but we do not guarantee it.

PRESENTED BY

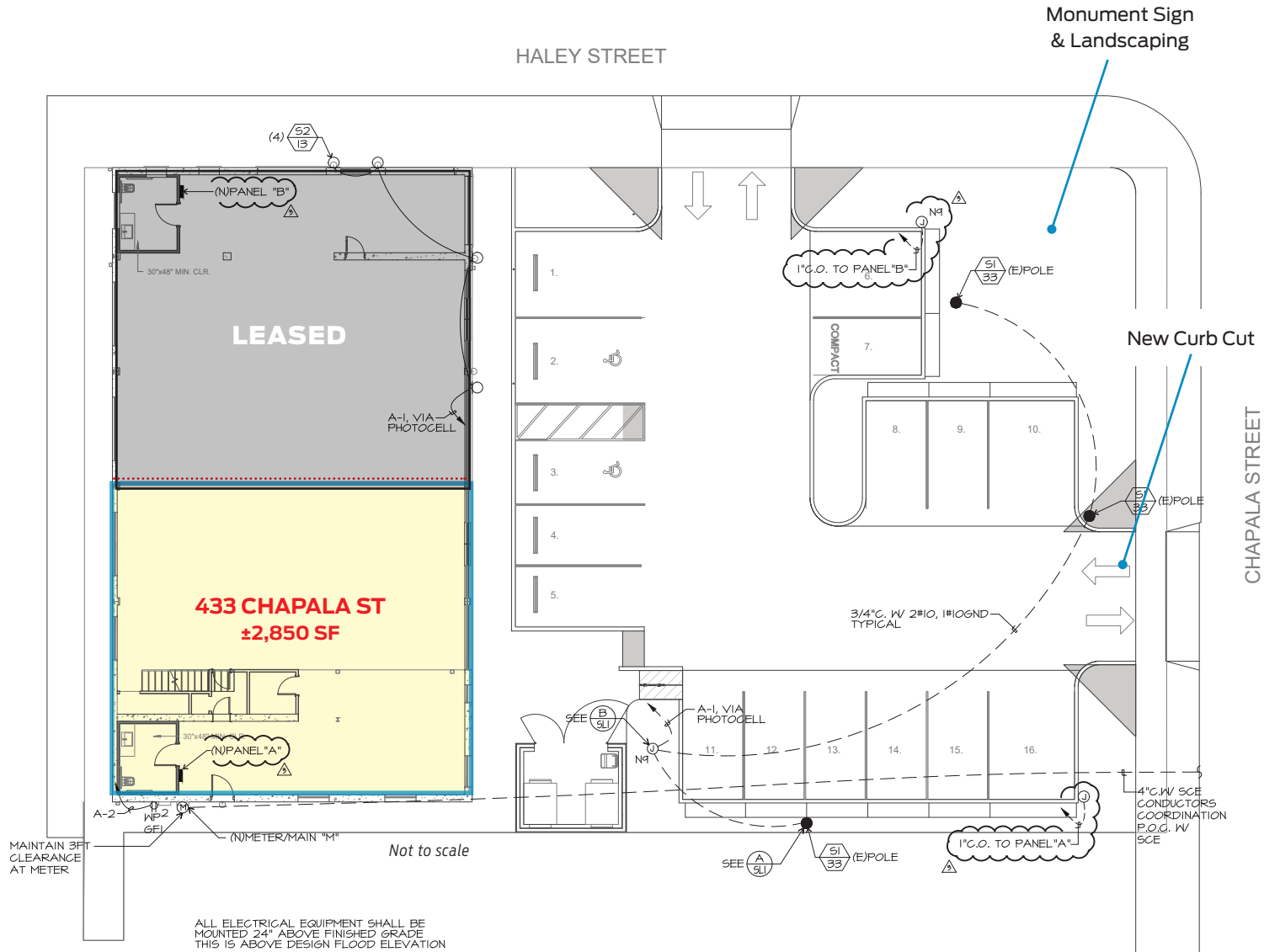
**GENE DEERING**  
805.879.9623  
[gdeering@radiusgroup.com](mailto:gdeering@radiusgroup.com)  
CA LIC. 01450943

**PAUL GAMBERDELLA**  
805.879.9622  
[pgamberdella@radiusgroup.com](mailto:pgamberdella@radiusgroup.com)  
CA LIC. 01267748



Versatile Retail/Office space with industrial stylings,  
high ceilings & mezzanine in downtown Santa Barbara

## SITE PLAN



© 07/01/25 Radius Group Commercial Real Estate, Inc. DRE Lic. 01334755. All rights reserved. Content and/or images may not be used without permission. The information provided here has been obtained from the owner of the property or from other sources deemed reliable. We have no reason to doubt its accuracy, but we do not guarantee it.

PRESENTED BY

**GENE DEERING**  
805.879.9623  
[gdeering@radiusgroup.com](mailto:gdeering@radiusgroup.com)  
CA LIC. 01450943

**PAUL GAMBERDELLA**  
805.879.9622  
[pgamberdella@radiusgroup.com](mailto:pgamberdella@radiusgroup.com)  
CA LIC. 01267748





433 CHAPALA  
STREET SANTA BARBARA  
CA 93101

FOR LEASE

Versatile Retail/Office space with industrial stylings,  
high ceilings & mezzanine in downtown Santa Barbara



PRESENTED BY

**GENE DEERING**  
805.879.9623  
[gdeering@radiusgroup.com](mailto:gdeering@radiusgroup.com)  
CA LIC. 01450943

**PAUL GAMBERDELLA**  
805.879.9622  
[pgamberdella@radiusgroup.com](mailto:pgamberdella@radiusgroup.com)  
CA LIC. 01267748





433 CHAPALA  
STREET SANTA BARBARA  
CA 93101

FOR LEASE

Versatile Retail/Office space with industrial stylings,  
high ceilings & mezzanine in downtown Santa Barbara



MEZZANINE

PRESENTED BY

**GENE DEERING**  
805.879.9623  
[gdeering@radiusgroup.com](mailto:gdeering@radiusgroup.com)  
CA LIC. 01450943

**PAUL GAMBERDELLA**  
805.879.9622  
[pgamberdella@radiusgroup.com](mailto:pgamberdella@radiusgroup.com)  
CA LIC. 01267748

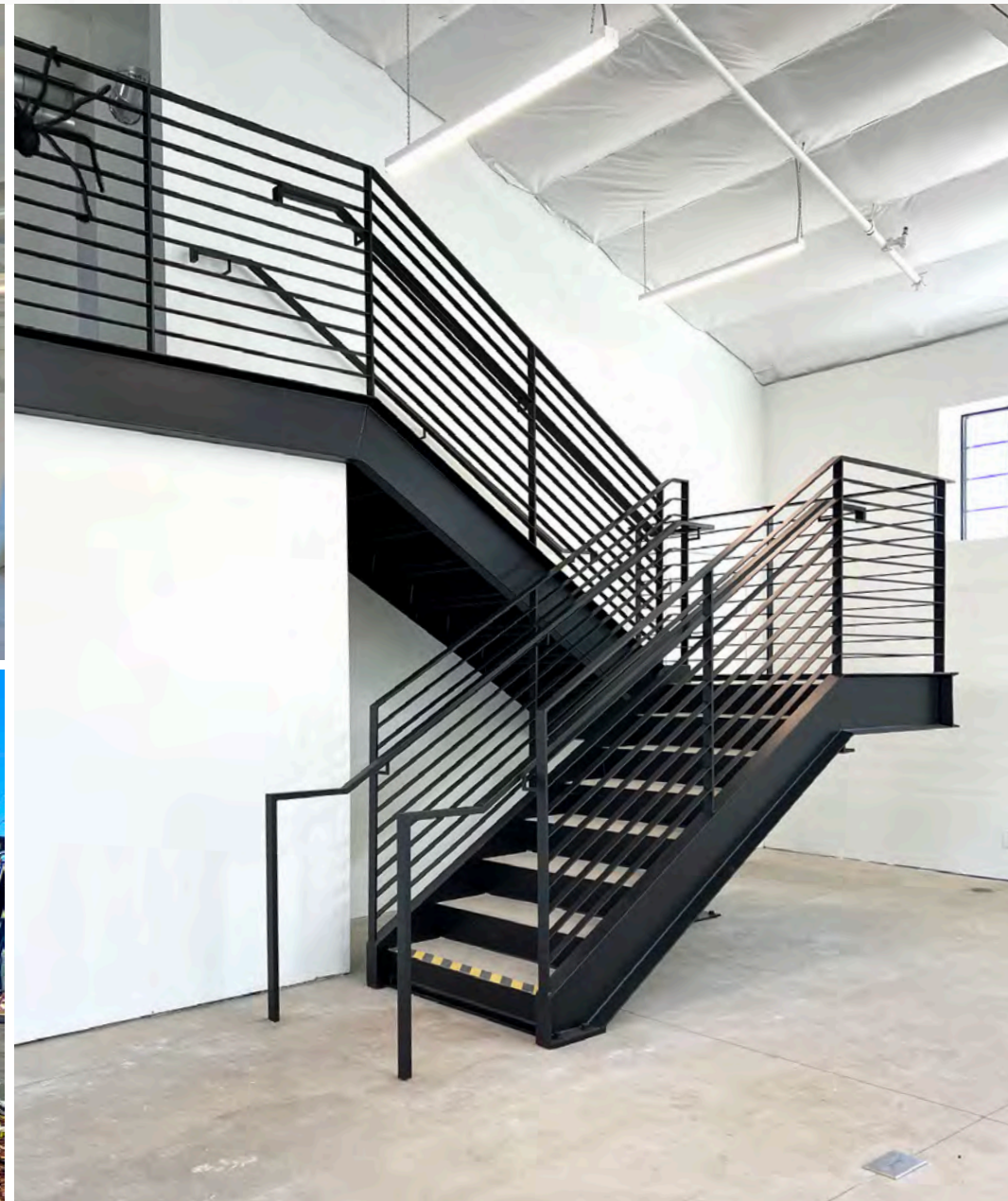
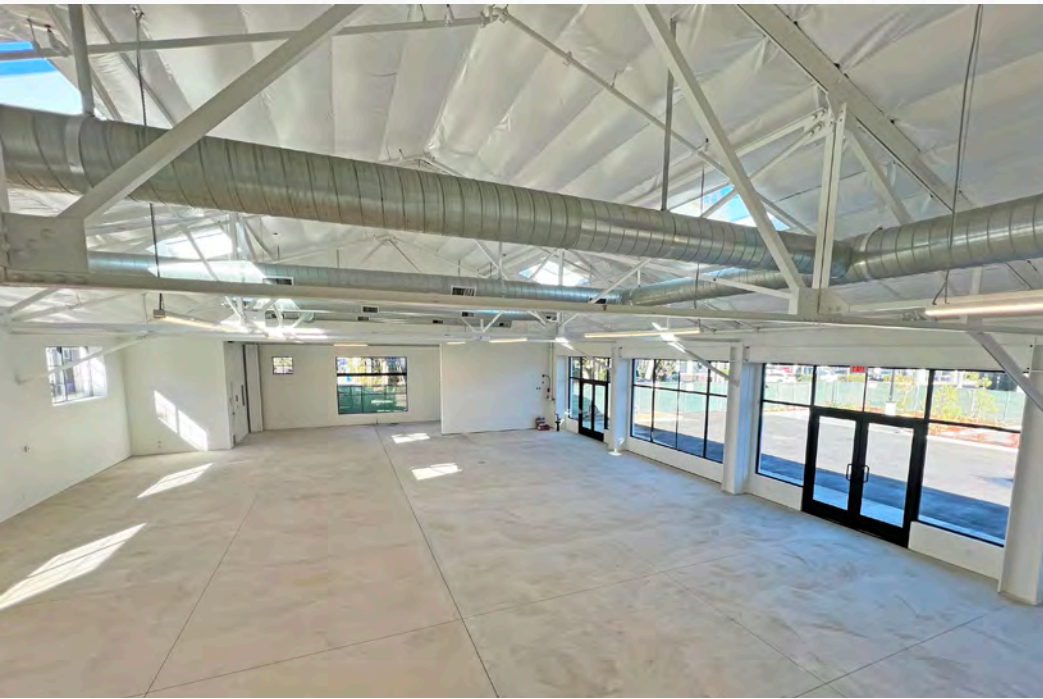




433 CHAPALA  
STREET SANTA BARBARA  
CA 93101

FOR LEASE

Versatile Retail/Office space with industrial stylings,  
high ceilings & mezzanine in downtown Santa Barbara



PRESENTED BY

**GENE DEERING**  
805.879.9623  
[gdeering@radiusgroup.com](mailto:gdeering@radiusgroup.com)  
CA LIC. 01450943

**PAUL GAMBERDELLA**  
805.879.9622  
[pgamberdella@radiusgroup.com](mailto:pgamberdella@radiusgroup.com)  
CA LIC. 01267748





433 CHAPALA  
STREET SANTA BARBARA  
CA 93101

FOR LEASE

Versatile Retail/Office space with industrial stylings,  
high ceilings & mezzanine in downtown Santa Barbara



PRESENTED BY

**GENE DEERING**  
**805.879.9623**  
[gdeering@radiusgroup.com](mailto:gdeering@radiusgroup.com)  
CA LIC. 01450943

**PAUL GAMBERDELLA**  
**805.879.9622**  
[pgamberdella@radiusgroup.com](mailto:pgamberdella@radiusgroup.com)  
CA LIC. 01267748



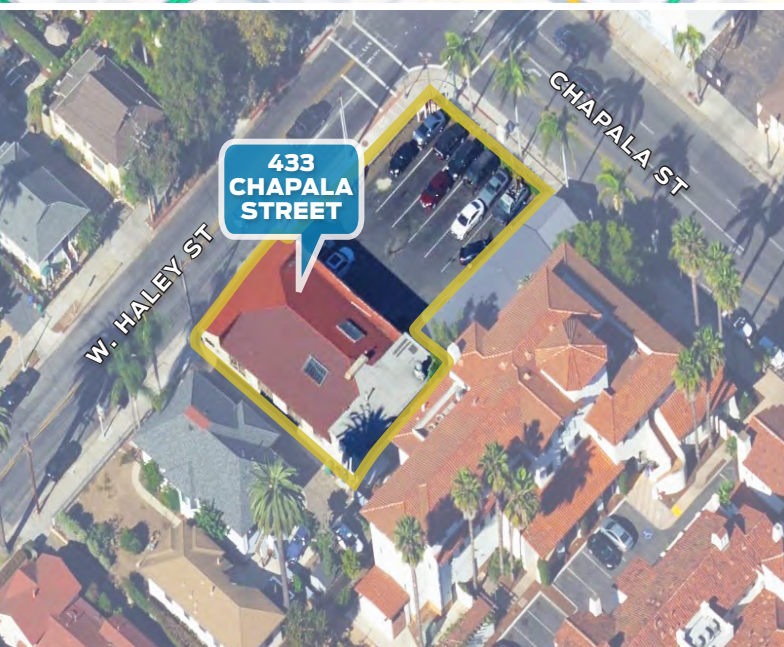
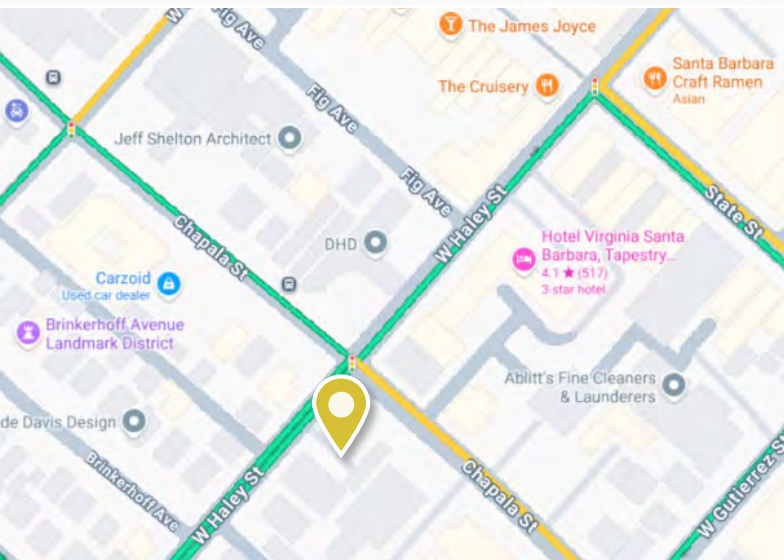


# 433 CHAPALA STREET

SANTA BARBARA  
CA 93101

FOR LEASE

Versatile Retail/Office space with industrial stylings,  
high ceilings & mezzanine in downtown Santa Barbara



© 07/01/25 Radius Group Commercial Real Estate, Inc. DRE lic. 01334755. All rights reserved. Content and/or images may not be used without permission. The information provided here has been obtained from the owner of the property or from other sources deemed reliable. We have no reason to doubt its accuracy, but we do not guarantee it.

PRESENTED BY

**GENE DEERING**  
805.879.9623  
[gdeering@radiusgroup.com](mailto:gdeering@radiusgroup.com)  
CA LIC. 01450943

**PAUL GAMBERDELLA**  
805.879.9622  
[pgamberdella@radiusgroup.com](mailto:pgamberdella@radiusgroup.com)  
CA LIC. 01267748





Versatile Retail/Office space with industrial stylings,  
high ceilings & mezzanine in downtown Santa Barbara

### Downtown Area Merchants & Attractions

- 1 Community West Bank
- 2 Saint Remy at El Prado Inn by Marriott
- 3 Renaud's Patisserie & Bistro
- 4 Scarlett Begonia
- 5 LOKUM
- 6 McConnell's Fine Ice Creams
- 7 Historic Santa Barbara Courthouse
- 8 World Market/Cost Plus
- 9 Lobero Theater
- 10 Buena Onda Empanadas
- 11 Joe's Cafe
- 12 Chocolate Maya
- 13 Rare Society
- 14 MOXI Wolf Museum of Exploration
- 15 Stearns Wharf
- 16 Hotel Californian
- 17 Oku
- 18 Jeannine's Restaurant & Bakery
- 19 Hilton Santa Barbara Beachfront Resort
- 20 El Presidio de Santa Bárbara State Historic Park
- 21 Santa Barbara Public Market



PRESENTED BY

**GENE DEERING**  
805.879.9623  
[gdeering@radiusgroup.com](mailto:gdeering@radiusgroup.com)  
CA LIC. 01450943

**PAUL GAMBERDELLA**  
805.879.9622  
[pgamberdella@radiusgroup.com](mailto:pgamberdella@radiusgroup.com)  
CA LIC. 01267748





Versatile Retail/Office space with industrial stylings,  
high ceilings & mezzanine in downtown Santa Barbara

# THE AMERICAN RIVIERA

Symbolizing the ultimate in casual California lifestyle, Santa Barbara is undoubtedly one of America's most desirable destinations to live and travel.



Located on a pristine coastline approximately 337 miles south of San Francisco and 93 miles north of Los Angeles, Santa Barbara is nestled between the Pacific Ocean and the Santa Ynez Mountains. This stretch of coast is known as the "American Riviera" because of its mild Mediterranean climate.

With a population of approximately 87,533, Santa Barbara is both small and vibrant. Locals and visitors are drawn to the city's charming downtown and picturesque State Street with its rich Spanish architecture and historical sites, wide variety of shops and galleries, numerous Zagat-rated restaurants and thriving open-air shopping centers like the famed Paseo Nuevo Mall. Pristine, sunny beaches, an expansive harbor and countless outdoor attractions including the Santa Barbara Zoo, Santa Barbara Mission, Stearns Wharf and Santa Barbara Museum of Natural History all add to the area's appeal. And with nearly 220 vineyards within a short drive, Santa Barbara County is a renowned wine region offering an array of some of the finest labels in the world.

## "Best Beach Town"

*Sunset Magazine's 2015 Inaugural Travel Awards*

## "The 12 Best Cities for a Weekend Getaway"

*U.S. News & World Report*

## "30 Best Small Cities in America"

*Condé Nast Traveler's Readers' Choice Awards*

PRESENTED BY

**GENE DEERING**  
805.879.9623  
[gdeering@radiusgroup.com](mailto:gdeering@radiusgroup.com)

CA LIC. 01450943

**PAUL GAMBERDELLA**  
805.879.9622  
[pgamberdella@radiusgroup.com](mailto:pgamberdella@radiusgroup.com)

CA LIC. 01267748

