

385 HAWTHORNE LANE

Athens, GA 30606



OFFERING SUMMARY

Lease Rate:	\$20 SF/yr (NNN)
Building Size:	5,830 SF
Available SF:	5,830 SF

PROPERTY OVERVIEW

Discover a premier leasing opportunity at 385 Hawthorne Lane, Athens, GA 30606. This exceptional property offers the opportunity for medical or traditional office on 5,830 SF. Convenient access to Loop 10 and Prince Ave make this location easily accessible from anywhere in Athens. Ample parking is also available with 25 spaces. Elevate your business with the unmatched potential of 385 Hawthorne Lane.

DEMOGRAPHICS	0.25 MILES	0.5 MILES	1 MILE
Total Households	117	484	2,373
Total Population	275	1,142	5,533
Average HH Income	\$91,789	\$92,686	\$87,545

AUSTIN SUMNER PROPERTIES

706.353.1039

brokerage@as-prop.com



385 HAWTHORNE LANE

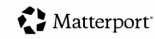
Athens, GA 30606



LEGEND

Available

GROSS INTERNAL AREA
FLOOR 1: 5,830 sq ft
TOTAL: 5,830 sq ft
SIZES AND DIMENSIONS ARE APPROXIMATE, ACTUAL MAY VARY



LEASE INFORMATION

Lease Type:	NNN	Lease Term:	Negotiable
Total Space:	5,830 SF	Lease Rate:	\$20 SF/yr

AVAILABLE SPACES

SUITE	TENANT	SIZE	TYPE	RATE	DESCRIPTION
Suite 1	Available	5,830 SF	NNN	\$20.00 SF/yr	-

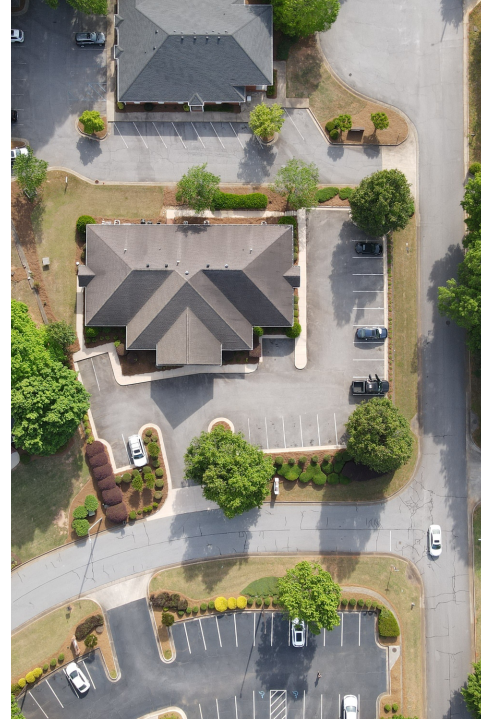
AUSTIN SUMNER PROPERTIES

706.353.1039
brokerage@as-prop.com



385 HAWTHORNE LANE

Athens, GA 30606



AUSTIN SUMNER PROPERTIES

706.353.1039
brokerage@as-prop.com



385 HAWTHORNE LANE

Athens, GA 30606



AUSTIN SUMNER PROPERTIES

706.353.1039
brokerage@as-prop.com



385 HAWTHORNE LANE

Athens, GA 30606



AUSTIN SUMNER PROPERTIES

706.353.1039
brokerage@as-prop.com

